

target : Jupiter
 target radius (km) : 71492.00
 C/A epoch : 2024-08-08T13:56:19.400
 Event type : Pgt
 : Jupiter occs: geocentric, topocentric
 : Not a ringed target
 Gaia source ID : 3412363817458378112
 2Mass ID (if available) : 04564675+2156429

Jupiter 2024-08-08T13:56:19 K9.80 G12.92 Pgt

ICRS Star Coord at Epoch: 04h 56m 46.75507s +21:56:43.01025s

RUWE (>1.4 is poor) : 0.97
 K magnitude : 9.804
 G magnitude : 12.919
 RP magnitude : 12.027
 BP magnitude : 13.751
 DUPflag : 0
 Distance (au) : 5.454
 f0 (km) : 0.00
 g0 (km) : 0.00
 skyplane vel. (km/s) : 27.26
 Sun-Target sep (deg) : 60.81
 Sun-Moon sep (deg) : 106.47
 B (ring opening deg) : 2.89
 PA of pole (deg) : -5.93
 Pole direction: RA (deg): 268.05790
 Dec (deg): 64.49674
 C/A sky separation (") : 4.080
 C/A sky separation (km) : 16138.6
 NAIF SPICE kernels : RAJobs_U111+rgf15.spk

URKALLvl1.spk
 naif0012.tls
 nep097.bsp
 nep101.bsp
 sat4401.bsp

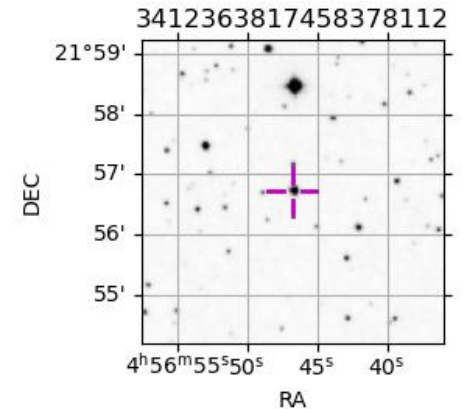
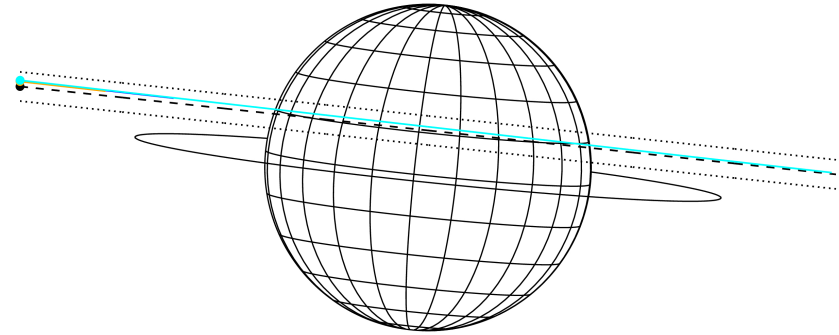
Observable events with sun below -5 deg and altitude above 5 deg

Obs	Location	lat	Elon	Target	Observed Events Interval	OCode
PIC	Pic du Midi	42.9	0.1			Pnn
PAL	Palomar Mt (200")	33.4	243.1			Pnn
PMO	Purple Mtn Obs. Nanking	32.1	118.8			Pnn
KPNO	Kitt Peak Natl Obs	32.0	248.4			Pnn
MCD	McDonald Obs. 2.7m	30.7	256.0			Pnn
TEN	Teide Obs./Tenerife	28.3	343.5			Pnn
IRTF	Mauna Kea/IRTF	19.8	204.5	+ +	AUG 08 13:10 - AUG 08 14:35	Pie
KAV	Kavalur Observatory	12.6	78.8			Pnn
RIO	Rio de Janeiro	-22.9	316.8			Pnn
ESO	European Southern Obs. (3.6m)	-29.3	289.3			Pnn
AAT	Siding Spring (AAT)	-31.3	149.1			Pnn
SAAO	So. Afr. Astro. Obs. (Sutherland)	-32.4	20.8			Pnn
MSO	Mt. Stromlo Observatory	-35.3	149.0			Pnn



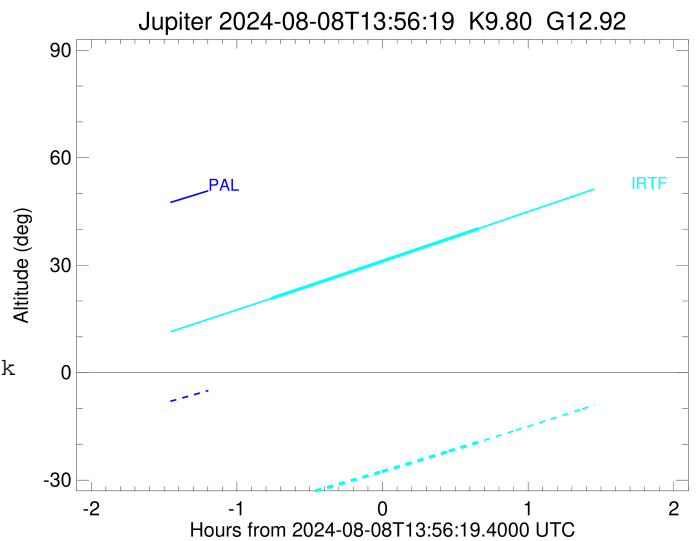
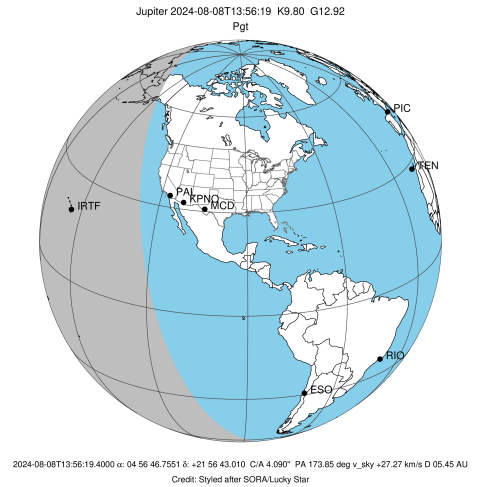
2024-08-08T13:56:19.4000 cc: 04 56 46.7551 s: +21 56 43.010 C/A 4.090" PA 173.85 deg v_sky +27.27 km/s D 05.45 AU
 Credit: Styled after SORA/Lucky Star

Earth
 PAL
 KPNO
 IRTF



```

target                : Jupiter
target radius (km)   : 71492.00
C/A epoch             : 2024-08-08T13:53:10.090
Event type            : Pgt
: Jupiter occs: geocentric, topocentric
: Not a ringed target
Observer code         : IRTF
Location              : Mauna Kea/IRTF
Latitude (deg)        : 19.82622
E. Longitude (deg)    : 204.52800
Altitude (km)         : 4.168
Gaia source ID        : 3412363817458378112
2Mass ID (if available) : 04564675+2156429
ICRS Star Coord at Epoch: 04h 56m 46.75507s +21:56:43.01025s
RUWE (>1.4 is poor) : 0.97
K magnitude           : 9.804
G magnitude           : 12.919
RP magnitude          : 12.027
BP magnitude          : 13.751
DUPflag              : 0
Distance (au)         : 5.454
f0 (km)               : 0.00
g0 (km)               : 0.00
skyplane vel. (km/s) : 27.26
Sun-Target sep (deg)  : 60.81
Sun-Moon sep (deg)   : 106.70
B (ring opening deg) : 2.89
PA of pole (deg)     : -5.93
Pole direction: RA (deg): 268.05790
Dec (deg): 64.49674
C/A sky separation (") : 4.478
C/A sky separation (km) : 17714.4
NAIF SPICE kernels    : RAJobs_U111+rgf15.spk
URKALLv1.spk
naif0012.tls
nep097.bsp
nep101.bsp
sat4401.bsp
de440.bsp
earth_720101_070426.bpc
jup365.bsp
urall6.bsp
IAU_SATURN_for_RINGFIT.tpc
pck00010.tpc
earth_200101_990628_predict.bpc
uranus_ringframes_rfrench20220627_v1.tf
neptune_ringframes_rfrench20220702a_v1.tf
earth_flat_IAU.spk
    
```



x: target alt < 5.0 deg or sun > -5.0 deg

Target	I/E	UTC	alt	alt-sun	radius	lat-geo	lat-geodetic
Jupiter	I	2024-08-08T13:10:37.798	20.77	-36.39	71491.2	14.90	16.92
Jupiter	E	2024-08-08T14:35:50.555	40.22	-19.37	71491.4	13.76	15.64