

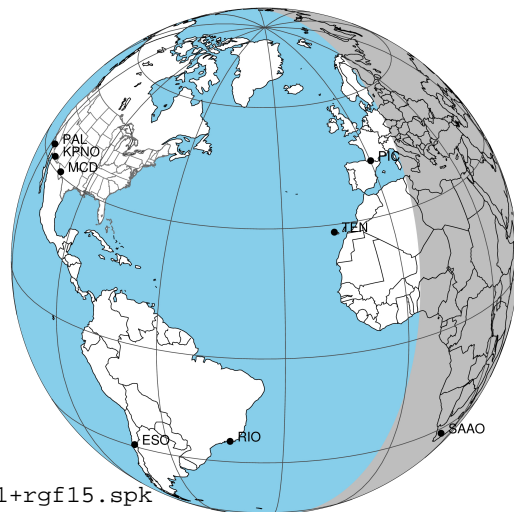
target : Jupiter  
 target radius (km) : 71492.00  
 C/A epoch : 2025-04-15T17:52:10.640  
 Event type : Pgt  
 : Jupiter occs: geocentric, topocentric  
 : Not a ringed target  
 Gaia source ID : 3415360403258287872  
 2Mass ID (if available) : 05082383+2237504

Jupiter 2025-04-15T17:52:10 K7.08 G10.17 Pgt

ICRS Star Coord at Epoch: 05h 08m 23.84383s +22:37:50.28946s

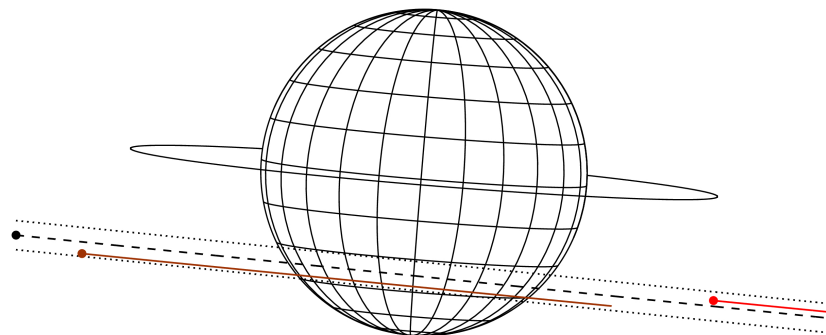
RUWE (>1.4 is poor) : 1.05  
 K magnitude : 7.083  
 G magnitude : 10.171  
 RP magnitude : 9.276  
 BP magnitude : 11.006  
 DUPflag : 0  
 Distance (au) : 5.667  
 f0 (km) : 0.00  
 g0 (km) : 0.00  
 skyplane vel. (km/s) : 30.89  
 Sun-Target sep (deg) : 52.45  
 Sun-Moon sep (deg) : 156.73  
 B (ring opening deg) : 2.46  
 PA of pole (deg) : -4.70  
 Pole direction: RA (deg): 268.05779  
 Dec (deg): 64.49671  
 C/A sky separation (") : 11.061  
 C/A sky separation (km) : 45463.1  
 NAIF SPICE kernels : RAJobs\_U111+rgf15.spk

Jupiter 2025-04-15T17:52:10 K7.08 G10.17  
 Pgt



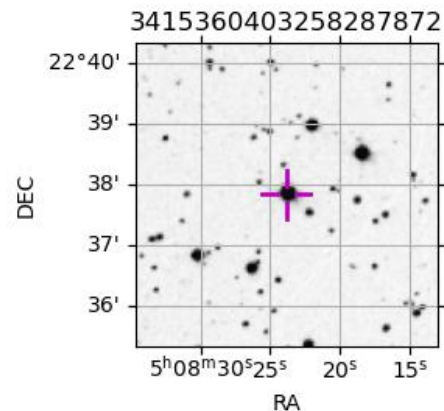
2025-04-15T17:52:10.6400 α: 05 08 23.8438 δ: +22 37 50.289 C/A \*\*\*\*\* PA 354.17 deg v\_sky +30.89 km/s D 05.67 AU  
 Credit: Styled after SORA/Lucky Star

Earth  
 PIC  
 SAAO



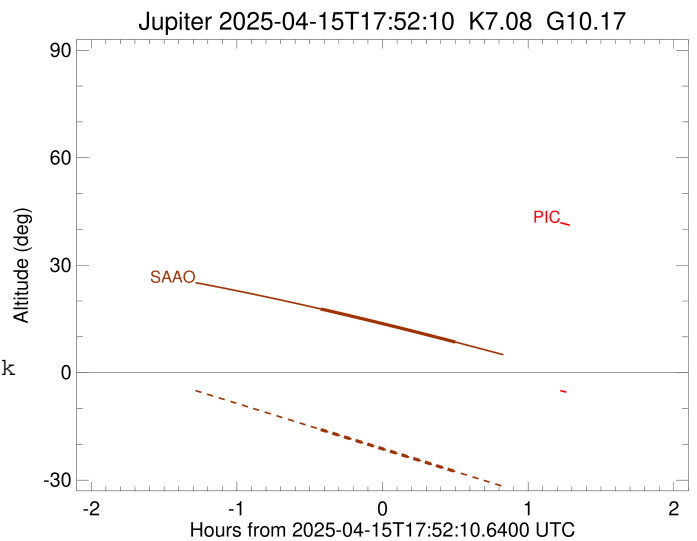
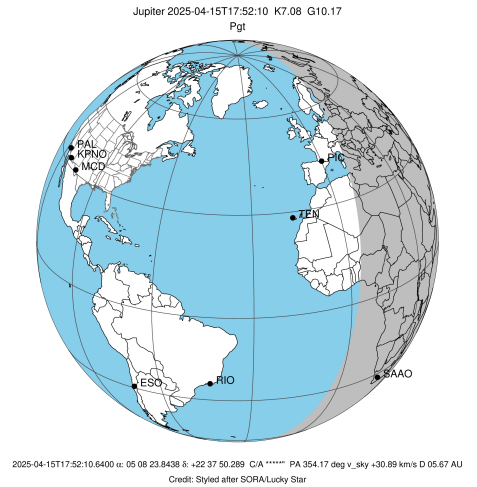
Observable events with sun below -5 deg and altitude above 5 deg

Obs	Location	lat	Elon	Target	Observed Events Interval	OCode
PIC	Pic du Midi	42.9	0.1			Pnn
PAL	Palomar Mt (200")	33.4	243.1			Pnn
PMO	Purple Mtn Obs. Nanking	32.1	118.8			Pnn
KPNO	Kitt Peak Natl Obs	32.0	248.4			Pnn
MCD	McDonald Obs. 2.7m	30.7	256.0			Pnn
TEN	Teide Obs./Tenerife	28.3	343.5			Pnn
IRTF	Mauna Kea/IRTF	19.8	204.5			Pnn
KAV	Kavalur Observatory	12.6	78.8			Pnn
RIO	Rio de Janeiro	-22.9	316.8			Pnn
ESO	European Southern Obs. (3.6m)	-29.3	289.3			Pnn
AAT	Siding Spring (AAT)	-31.3	149.1			Pnn
SAAO	So. Afr. Astro. Obs. (Sutherland)	-32.4	20.8	+ +	APR 15 17:26 - APR 15 18:22	Pie
MSO	Mt. Stromlo Observatory	-35.3	149.0			Pnn



```

target                : Jupiter
target radius (km)   : 71492.00
C/A epoch             : 2025-04-15T17:54:26.520
Event type           : Pgt
: Jupiter occs: geocentric, topocentric
: Not a ringed target
Observer code        : SAAO
Location             : So. Afr. Astro. Obs. (Sutherland)
Latitude (deg)       : -32.37953
E. Longitude (deg)   : 20.81070
Altitude (km)        : 1.768
Gaia source ID       : 3415360403258287872
2Mass ID (if available) : 05082383+2237504
ICRS Star Coord at Epoch: 05h 08m 23.84383s +22:37:50.28946s
RUWE (>1.4 is poor) : 1.05
K magnitude           : 7.083
G magnitude           : 10.171
RP magnitude         : 9.276
BP magnitude         : 11.006
DUPflag              : 0
Distance (au)        : 5.667
f0 (km)              : 0.00
g0 (km)              : 0.00
skyplane vel. (km/s) : 30.89
Sun-Target sep (deg) : 52.45
Sun-Moon sep (deg)   : 157.45
B (ring opening deg) : 2.46
PA of pole (deg)     : -4.70
Pole direction: RA (deg): 268.05779
Dec (deg): 64.49671
C/A sky separation ("): 12.208
C/A sky separation (km): 50179.7
NAIF SPICE kernels   : RAJobs_U111+rgf15.spk
URKALLv1.spk
naif0012.tls
nep097.bsp
nep101.bsp
sat4401.bsp
de440.bsp
earth_720101_070426.bpc
jup365.bsp
urall6.bsp
IAU_SATURN_for_RINGFIT.tpc
pck00010.tpc
earth_200101_990628_predict.bpc
uranus_ringframes_rfrench20220627_v1.tf
neptune_ringframes_rfrench20220702a_v1.tf
earth_flat_IAU.spk
    
```



x: target alt < 5.0 deg or sun > -5.0 deg

Target	I/E	UTC	alt	alt-sun	radius	lat-geo	lat-geodetic
Jupiter	I	2025-04-15T17:26:44.276	17.78	-15.87	71488.1	-43.58	-47.29
Jupiter	E	2025-04-15T18:22:06.231	8.56	-27.58	71487.8	-45.45	-49.15