

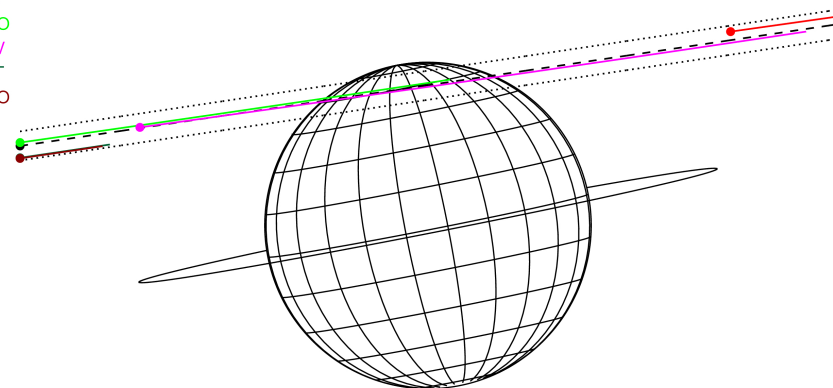
target : Jupiter  
 target radius (km) : 71492.00  
 C/A epoch : 2025-10-06T21:25:40.990  
 Event type : Pgt  
 : Jupiter occs: geocentric, topocentric  
 : Not a ringed target  
 Gaia source ID : 865399939794984320  
 2Mass ID (if available) : 07382418+2132540

Jupiter 2025-10-06T21:25:40 K8.57 G11.14 Pgt

ICRS Star Coord at Epoch: 07h 38m 24.18481s +21:32:53.96258s  
 RUWE (>1.4 is poor) : 0.96  
 K magnitude : 8.572  
 G magnitude : 11.135  
 RP magnitude : 10.379  
 BP magnitude : 11.762  
 DUPflag : 0  
 Distance (au) : 5.246  
 f0 (km) : 0.00  
 g0 (km) : 0.00  
 skyplane vel. (km/s) : 17.04  
 Sun-Target sep (deg) : 80.74  
 Sun-Moon sep (deg) : 102.94  
 B (ring opening deg) : 1.53  
 PA of pole (deg) : 11.10  
 Pole direction: RA (deg): 268.05773  
 Dec (deg): 64.49670  
 C/A sky separation (") : 15.974  
 C/A sky separation (km) : 60781.5  
 NAIF SPICE kernels : RAJobs\_U111+rgf15.spk



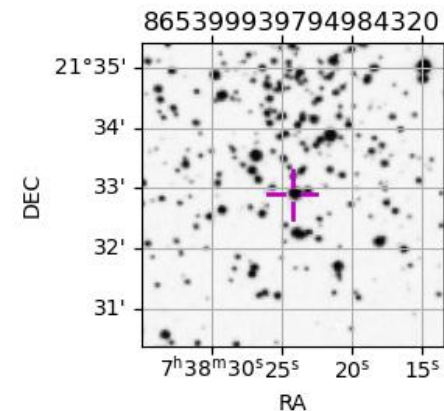
Earth  
 PIC  
 PMO  
 KAV  
 AAT  
 MSO



2025-10-06T21:25:40.9900 α: 07 38 24.1848 δ: +21 32 53.963 C/A \*\*\*\*\* PA 188.47 deg v\_sky +17.04 km/s D 05.25 AU  
 Credit: Styled after SORA/Lucky Star

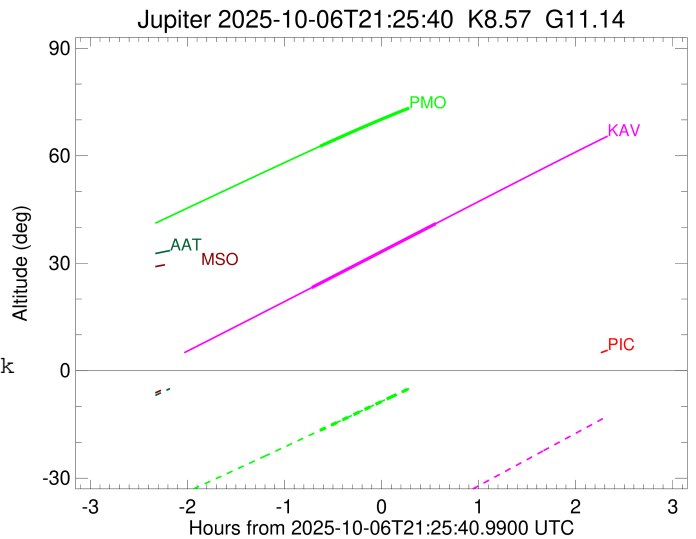
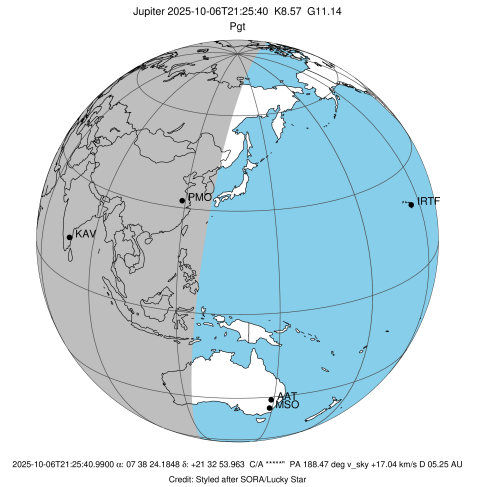
Observable events with sun below -5 deg and altitude above 5 deg

Obs	Location	lat	Elon	Target	Observed Events Interval	OCode
PIC	Pic du Midi	42.9	0.1			Pnn
PAL	Palomar Mt (200")	33.4	243.1			Pnn
PMO	Purple Mtn Obs. Nanking	32.1	118.8	+	OCT 06 20:47 - OCT 06 20:47	Pin
KPNO	Kitt Peak Natl Obs	32.0	248.4			Pnn
MCD	McDonald Obs. 2.7m	30.7	256.0			Pnn
TEN	Teide Obs./Tenerife	28.3	343.5			Pnn
IRTF	Mauna Kea/IRTF	19.8	204.5			Pnn
KAV	Kavalur Observatory	12.6	78.8	+ +	OCT 06 20:42 - OCT 06 21:59	Pie
RIO	Rio de Janeiro	-22.9	316.8			Pnn
ESO	European Southern Obs. (3.6m)	-29.3	289.3			Pnn
AAT	Siding Spring (AAT)	-31.3	149.1			Pnn
SAAO	So. Afr. Astro. Obs. (Sutherland)	-32.4	20.8			Pnn
MSO	Mt. Stromlo Observatory	-35.3	149.0			Pnn



```

target                : Jupiter
target radius (km)   : 71492.00
C/A epoch             : 2025-10-06T21:23:43.660
Event type            : Pgt
: Jupiter occs: geocentric, topocentric
: Not a ringed target
Observer code         : PMO
Location              : Purple Mtn Obs. Nanking
Latitude (deg)       : 32.06667
E. Longitude (deg)   : 118.82089
Altitude (km)        : 0.364
Gaia source ID       : 865399939794984320
2Mass ID (if available) : 07382418+2132540
ICRS Star Coord at Epoch: 07h 38m 24.18481s +21:32:53.96258s
RUWE (>1.4 is poor) : 0.96
K magnitude           : 8.572
G magnitude           : 11.135
RP magnitude         : 10.379
BP magnitude         : 11.762
DUPflag              : 0
Distance (au)        : 5.246
f0 (km)              : 0.00
g0 (km)              : 0.00
skyplane vel. (km/s) : 17.04
Sun-Target sep (deg) : 80.74
Sun-Moon sep (deg)  : 103.93
B (ring opening deg) : 1.53
PA of pole (deg)    : 11.10
Pole direction: RA (deg): 268.05773
Dec (deg): 64.49670
C/A sky separation ("): 16.231
C/A sky separation (km): 61761.4
NAIF SPICE kernels   : RAJobs_U111+rgf15.spk
URKALLv1.spk
naif0012.tls
nep097.bsp
nep101.bsp
sat4401.bsp
de440.bsp
earth_720101_070426.bpc
jup365.bsp
urall6.bsp
IAU_SATURN_for_RINGFIT.tpc
pck00010.tpc
earth_200101_990628_predict.bpc
uranus_ringframes_rfrench20220627_v1.tf
neptune_ringframes_rfrench20220702a_v1.tf
earth_flat_IAU.spk
    
```

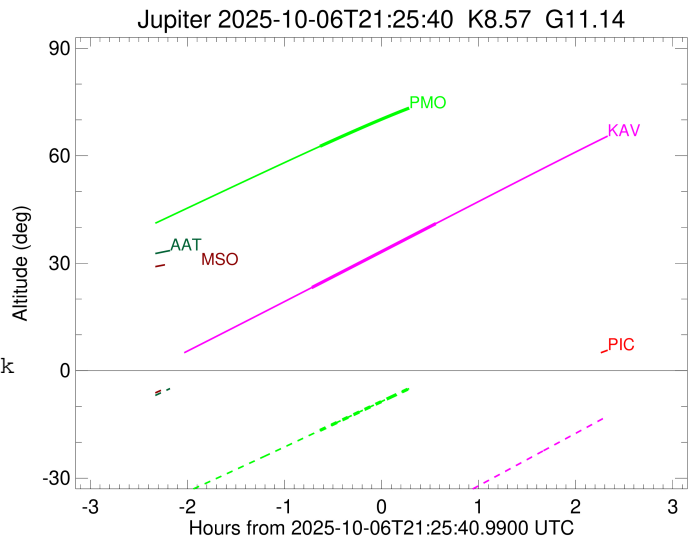
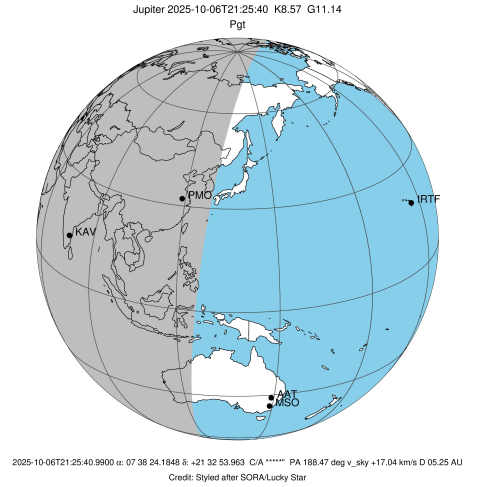


x: target alt < 5.0 deg or sun > -5.0 deg

Target	I/E	UTC	alt	alt-sun	radius	lat-geo	lat-geodetic
Jupiter	I	2025-10-06T20:47:48.728	62.65	-16.64	71489.5	62.36	65.25
Jupiter	E	2025-10-06T21:59:42.441	76.05	-1.41x	71489.7	57.17	60.41

```

target                : Jupiter
target radius (km)    : 71492.00
C/A epoch             : 2025-10-06T21:20:49.220
Event type            : Pgt
: Jupiter occs: geocentric, topocentric
: Not a ringed target
Observer code         : KAV
Location              : Kavalur Observatory
Latitude (deg)        : 12.57556
E. Longitude (deg)    : 78.83167
Altitude (km)         : 0.722
Gaia source ID        : 865399939794984320
2Mass ID (if available) : 07382418+2132540
ICRS Star Coord at Epoch: 07h 38m 24.18481s +21:32:53.96258s
RUWE (>1.4 is poor) : 0.96
K magnitude           : 8.572
G magnitude           : 11.135
RP magnitude          : 10.379
BP magnitude          : 11.762
DUPflag              : 0
Distance (au)         : 5.247
f0 (km)               : 0.00
g0 (km)               : 0.00
skyplane vel. (km/s) : 17.04
Sun-Target sep (deg) : 80.74
Sun-Moon sep (deg)   : 103.67
B (ring opening deg) : 1.53
PA of pole (deg)     : 11.10
Pole direction: RA (deg): 268.05773
Dec (deg): 64.49670
C/A sky separation (") : 15.800
C/A sky separation (km) : 60121.3
NAIF SPICE kernels   : RAJobs_U111+rgf15.spk
URKALLv1.spk
naif0012.tls
nep097.bsp
nep101.bsp
sat4401.bsp
de440.bsp
earth_720101_070426.bpc
jup365.bsp
urall6.bsp
IAU_SATURN_for_RINGFIT.tpc
pck00010.tpc
earth_200101_990628_predict.bpc
uranus_ringframes_rfrench20220627_v1.tf
neptune_ringframes_rfrench20220702a_v1.tf
earth_flat_IAU.spk
    
```



x: target alt < 5.0 deg or sun > -5.0 deg

Target	I/E	UTC	alt	alt-sun	radius	lat-geo	lat-geodetic
Jupiter	I	2025-10-06T20:42:34.769	23.19	-57.18	71489.6	60.25	63.29
Jupiter	E	2025-10-06T21:59:13.931	41.05	-38.58	71489.9	54.26	57.66