

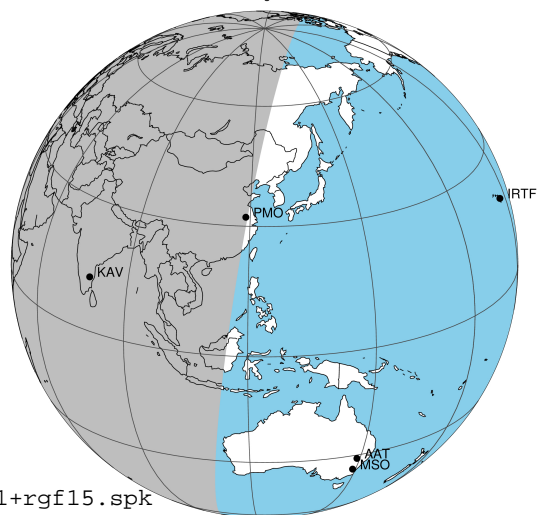
target : Jupiter
 target radius (km) : 71492.00
 C/A epoch : 2025-10-10T22:07:14.130
 Event type : Pgt
 : Jupiter occs: geocentric, topocentric
 : Not a ringed target
 Gaia source ID : 673246435866013952
 2Mass ID (if available) : 07400930+2129081

Jupiter 2025-10-10T22:07:14 K8.78 G11.89 Pgt

ICRS Star Coord at Epoch: 07h 40m 09.30730s +21:29:08.03866s

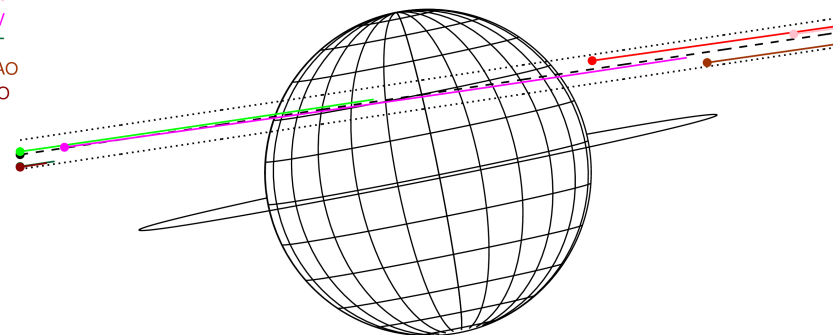
RUWE (>1.4 is poor) : 1.06
 K magnitude : 8.778
 G magnitude : 11.889
 RP magnitude : 11.000
 BP magnitude : 12.721
 DUPflag : 0
 Distance (au) : 5.185
 f0 (km) : 0.00
 g0 (km) : 0.00
 skyplane vel. (km/s) : 15.21
 Sun-Target sep (deg) : 84.31
 Sun-Moon sep (deg) : 43.38
 B (ring opening deg) : 1.52
 PA of pole (deg) : 11.27
 Pole direction: RA (deg): 268.05773
 Dec (deg): 64.49670
 C/A sky separation (") : 9.077
 C/A sky separation (km) : 34132.1
 NAIF SPICE kernels : RAJobs_U111+rgf15.spk

Jupiter 2025-10-10T22:07:14 K8.78 G11.89
 Pgt



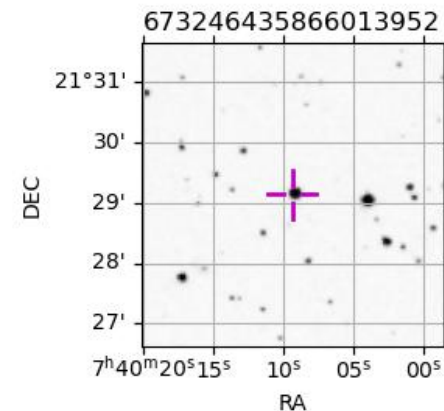
2025-10-10T22:07:14.1300 ex: 07 40 09.3073 s: +21 29 08.039 C/A 9.085" PA 188.49 deg v_sky +15.21 km/s D 05.18 AU
 Credit: Styled after SORA/Lucky Star

Earth
 PIC
 PMO
 TEN
 KAV
 AAT
 SAAO
 MSO



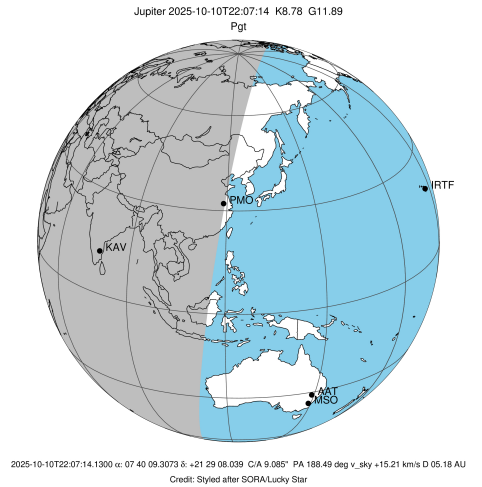
Observable events with sun below -5 deg and altitude above 5 deg

Obs	Location	lat	Elon	Target	Observed Events Interval	OCode
PIC	Pic du Midi	42.9	0.1			Pnn
PAL	Palomar Mt (200")	33.4	243.1			Pnn
PMO	Purple Mtn Obs. Nanking	32.1	118.8	+	OCT 10 20:56 - OCT 10 20:56	Pin
KPNO	Kitt Peak Natl Obs	32.0	248.4			Pnn
MCD	McDonald Obs. 2.7m	30.7	256.0			Pnn
TEN	Teide Obs./Tenerife	28.3	343.5			Pnn
IRTF	Mauna Kea/IRTF	19.8	204.5			Pnn
KAV	Kavalur Observatory	12.6	78.8	+ +	OCT 10 20:52 - OCT 10 23:13	Pie
RIO	Rio de Janeiro	-22.9	316.8			Pnn
ESO	European Southern Obs. (3.6m)	-29.3	289.3			Pnn
AAT	Siding Spring (AAT)	-31.3	149.1			Pnn
SAAO	So. Afr. Astro. Obs. (Sutherland)	-32.4	20.8			Pnn
MSO	Mt. Stromlo Observatory	-35.3	149.0			Pnn

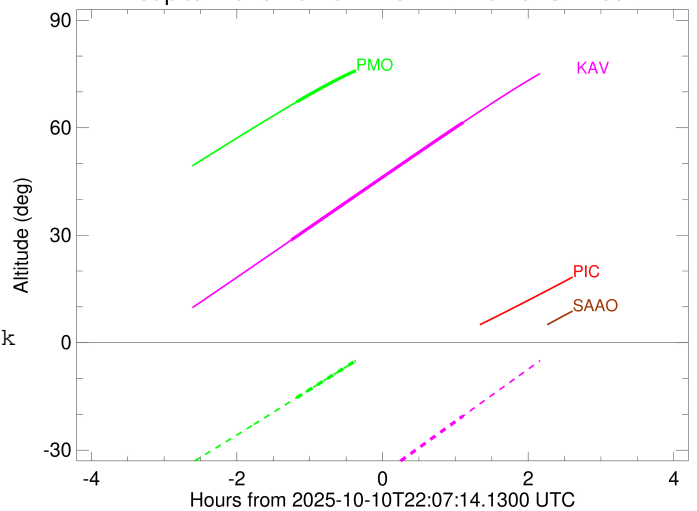


```

target                : Jupiter
target radius (km)   : 71492.00
C/A epoch            : 2025-10-10T22:06:23.300
Event type          : Pgt
                    : Jupiter occs: geocentric, topocentric
                    : Not a ringed target
Observer code       : PMO
Location            : Purple Mtn Obs. Nanking
Latitude (deg)      : 32.06667
E. Longitude (deg)  : 118.82089
Altitude (km)       : 0.364
Gaia source ID      : 673246435866013952
2Mass ID (if available) : 07400930+2129081
ICRS Star Coord at Epoch: 07h 40m 09.30730s +21:29:08.03866s
RUWE (>1.4 is poor) : 1.06
K magnitude          : 8.778
G magnitude          : 11.889
RP magnitude         : 11.000
BP magnitude         : 12.721
DUPflag             : 0
Distance (au)        : 5.185
f0 (km)              : 0.00
g0 (km)              : 0.00
skyplane vel. (km/s) : 15.21
Sun-Target sep (deg) : 84.31
Sun-Moon sep (deg)  : 43.97
B (ring opening deg) : 1.52
PA of pole (deg)    : 11.27
Pole direction: RA (deg): 268.05773
Dec (deg): 64.49670
C/A sky separation ("): 9.364
C/A sky separation (km): 35210.8
NAIF SPICE kernels  : RAJobs_U111+rgf15.spk
URKALLv1.spk
naif0012.tls
nep097.bsp
nep101.bsp
sat4401.bsp
de440.bsp
earth_720101_070426.bpc
jup365.bsp
urall6.bsp
IAU_SATURN_for_RINGFIT.tpc
pck00010.tpc
earth_200101_990628_predict.bpc
uranus_ringframes_rfrench20220627_v1.tf
neptune_ringframes_rfrench20220702a_v1.tf
earth_flat_IAU.spk
    
```



Jupiter 2025-10-10T22:07:14 K8.78 G11.89

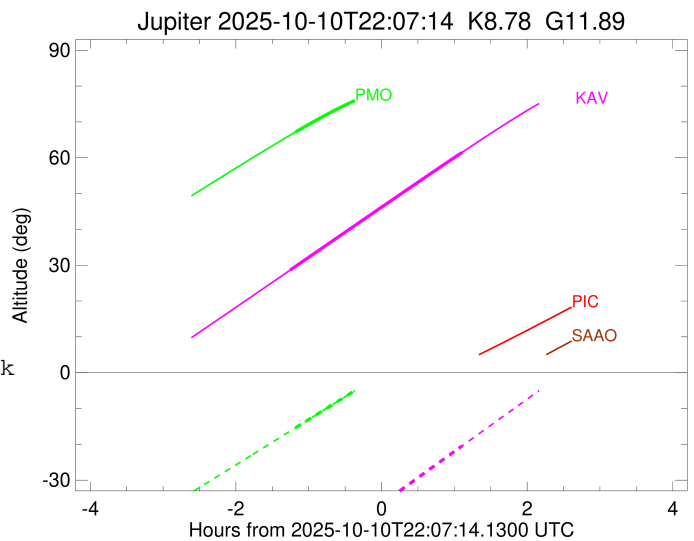
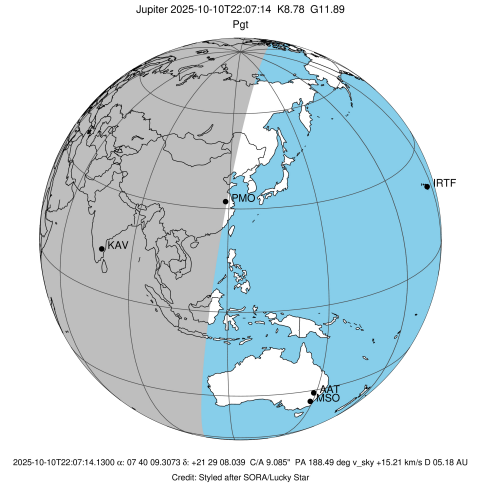


x: target alt < 5.0 deg or sun > -5.0 deg

Target	I/E	UTC	alt	alt-sun	radius	lat-geo	lat-geodetic
Jupiter	I	2025-10-10T20:56:34.680	67.21	-15.34	71491.1	32.18	35.67
Jupiter	E	2025-10-10T23:16:20.190	74.85	13.89x	71491.4	26.98	30.16

```

target                : Jupiter
target radius (km)   : 71492.00
C/A epoch            : 2025-10-10T22:02:35.380
Event type          : Pgt
                    : Jupiter occs: geocentric, topocentric
                    : Not a ringed target
Observer code       : KAV
Location            : Kavalur Observatory
Latitude (deg)      : 12.57556
E. Longitude (deg)  : 78.83167
Altitude (km)       : 0.722
Gaia source ID      : 673246435866013952
2Mass ID (if available) : 07400930+2129081
ICRS Star Coord at Epoch: 07h 40m 09.30730s +21:29:08.03866s
RUWE (>1.4 is poor) : 1.06
K magnitude          : 8.778
G magnitude          : 11.889
RP magnitude         : 11.000
BP magnitude         : 12.721
DUPflag             : 0
Distance (au)       : 5.185
f0 (km)              : 0.00
g0 (km)              : 0.00
skyplane vel. (km/s) : 15.21
Sun-Target sep (deg) : 84.31
Sun-Moon sep (deg)  : 43.41
B (ring opening deg) : 1.52
PA of pole (deg)    : 11.27
Pole direction: RA (deg): 268.05773
Dec (deg): 64.49670
C/A sky separation (") : 8.821
C/A sky separation (km) : 33170.9
NAIF SPICE kernels  : RAJobs_U111+rgf15.spk
URKALLv1.spk
naif0012.tls
nep097.bsp
nep101.bsp
sat4401.bsp
de440.bsp
earth_720101_070426.bpc
jup365.bsp
urall6.bsp
IAU_SATURN_for_RINGFIT.tpc
pck00010.tpc
earth_200101_990628_predict.bpc
uranus_ringframes_rfrench20220627_v1.tf
neptune_ringframes_rfrench20220702a_v1.tf
earth_flat_IAU.spk
    
```



x: target alt < 5.0 deg or sun > -5.0 deg

Target	I/E	UTC	alt	alt-sun	radius	lat-geo	lat-geodetic
Jupiter	I	2025-10-10T20:52:02.332	28.64	-54.98	71491.2	30.77	34.19
Jupiter	E	2025-10-10T23:13:42.029	61.50	-20.44	71491.4	24.68	27.69