

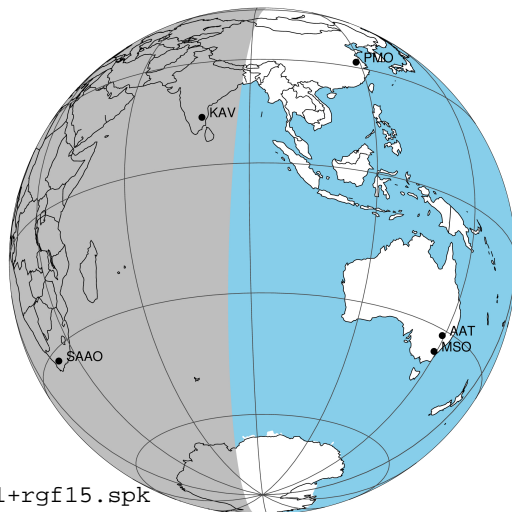
target : Jupiter
 target radius (km) : 71492.00
 C/A epoch : 2031-03-10T00:24:42.430
 Event type : Pgt
 : Jupiter occs: geocentric, topocentric
 : Not a ringed target
 Gaia source ID : 4116890637678260480
 2Mass ID (if available) : 17445905-2251299

Jupiter 2031-03-10T00:24:42 K8.81 G14.39 Pgt

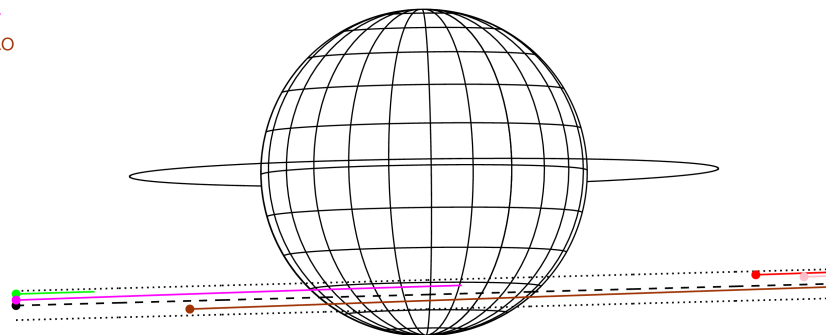
ICRS Star Coord at Epoch: 17h 44m 59.06244s -22:51:30.01733s

RUWE (>1.4 is poor) : 1.57
 K magnitude : 8.809
 G magnitude : 14.389
 RP magnitude : 12.980
 BP magnitude : 16.735
 DUPflag : 0
 Distance (au) : 5.355
 f0 (km) : 0.00
 g0 (km) : 0.00
 skyplane vel. (km/s) : 17.15
 Sun-Target sep (deg) : 82.26
 Sun-Moon sep (deg) : 87.69
 B (ring opening deg) : -2.63
 PA of pole (deg) : 0.78
 Pole direction: RA (deg): 268.05700
 Dec (deg): 64.49651
 C/A sky separation (") : 13.774
 C/A sky separation (km) : 53492.8
 NAIF SPICE kernels : RAJobs_U111+rgf15.spk

Jupiter 2031-03-10T00:24:42 K8.81 G14.39
 Pgt



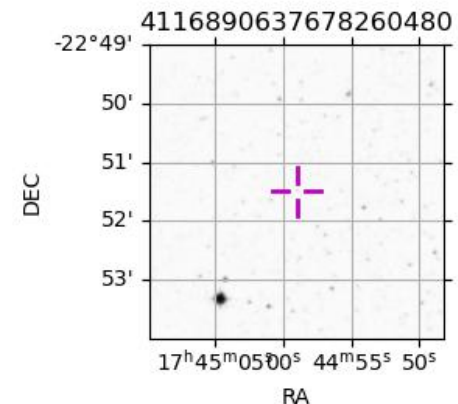
Earth
 PIC
 PMO
 TEN
 KAV
 SAAO



2031-03-10T00:24:42.4300 α: 17 44 59.0624 δ: -22 51 30.017 C/A ***** PA 1.53 deg v_sky +17.15 km/s D 05.35 AU
 Credit: Styled after SORA/Lucky Star

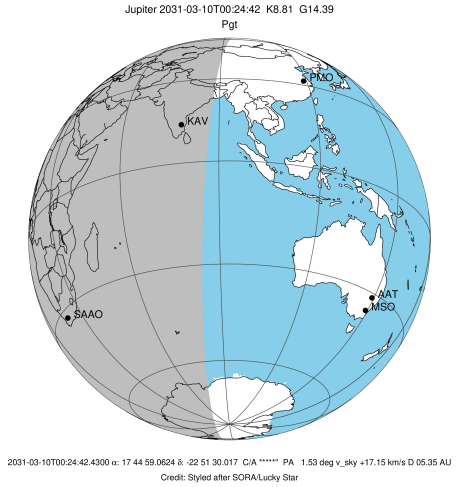
Observable events with sun below -5 deg and altitude above 5 deg

Obs	Location	lat	Elon	Target	Observed Events Interval	OEcode
PIC	Pic du Midi	42.9	0.1			Pnn
PAL	Palomar Mt (200")	33.4	243.1			Pnn
PMO	Purple Mtn Obs. Nanking	32.1	118.8			Pnn
KPNO	Kitt Peak Natl Obs	32.0	248.4			Pnn
MCD	McDonald Obs. 2.7m	30.7	256.0			Pnn
TEN	Teide Obs./Tenerife	28.3	343.5			Pnn
IRTF	Mauna Kea/IRTF	19.8	204.5			Pnn
KAV	Kavalur Observatory	12.6	78.8	+	MAR 09 23:32 - MAR 09 23:32	Pin
RIO	Rio de Janeiro	-22.9	316.8			Pnn
ESO	European Southern Obs. (3.6m)	-29.3	289.3			Pnn
AAT	Siding Spring (AAT)	-31.3	149.1			Pnn
SAAO	So. Afr. Astro. Obs. (Sutherland)	-32.4	20.8	+ +	MAR 09 23:37 - MAR 10 01:03	Pie
MSO	Mt. Stromlo Observatory	-35.3	149.0			Pnn

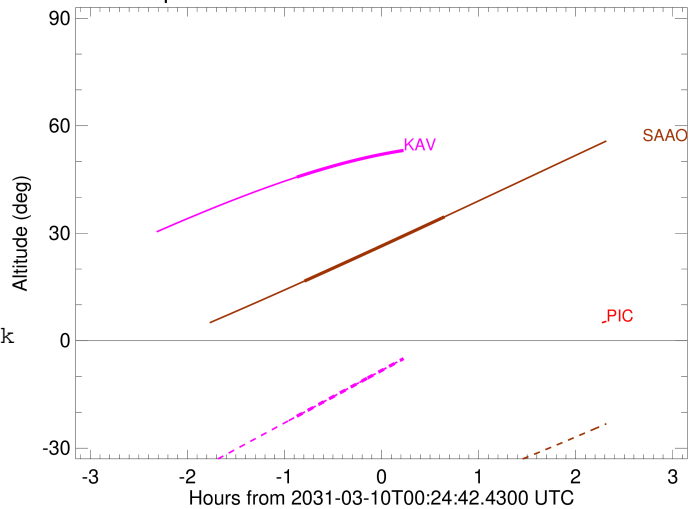


```

target                : Jupiter
target radius (km)   : 71492.00
C/A epoch            : 2031-03-10T00:23:15.680
Event type          : Pgt
                    : Jupiter occs: geocentric, topocentric
                    : Not a ringed target
Observer code       : KAV
Location            : Kavalur Observatory
Latitude (deg)      : 12.57556
E. Longitude (deg)  : 78.83167
Altitude (km)       : 0.722
Gaia source ID      : 4116890637678260480
2Mass ID (if available) : 17445905-2251299
ICRS Star Coord at Epoch: 17h 44m 59.06244s -22:51:30.01733s
RUWE (>1.4 is poor) : 1.57
K magnitude          : 8.809
G magnitude          : 14.389
RP magnitude         : 12.980
BP magnitude         : 16.735
DUPflag             : 0
Distance (au)       : 5.355
f0 (km)              : 0.00
g0 (km)              : 0.00
skyplane vel. (km/s) : 17.15
Sun-Target sep (deg) : 82.26
Sun-Moon sep (deg)  : 88.43
B (ring opening deg) : -2.63
PA of pole (deg)    : 0.78
Pole direction: RA (deg): 268.05700
Dec (deg): 64.49651
C/A sky separation (" ) : 12.854
C/A sky separation (km) : 49917.4
NAIF SPICE kernels  : RAJobs_U111+rgf15.spk
URKALLv1.spk
naif0012.tls
nep097.bsp
nep101.bsp
sat4401.bsp
de440.bsp
earth_720101_070426.bpc
jup365.bsp
urall6.bsp
IAU_SATURN_for_RINGFIT.tpc
pck00010.tpc
earth_200101_990628_predict.bpc
uranus_ringframes_rfrench20220627_v1.tf
neptune_ringframes_rfrench20220702a_v1.tf
earth_flat_IAU.spk
    
```



Jupiter 2031-03-10T00:24:42 K8.81 G14.39

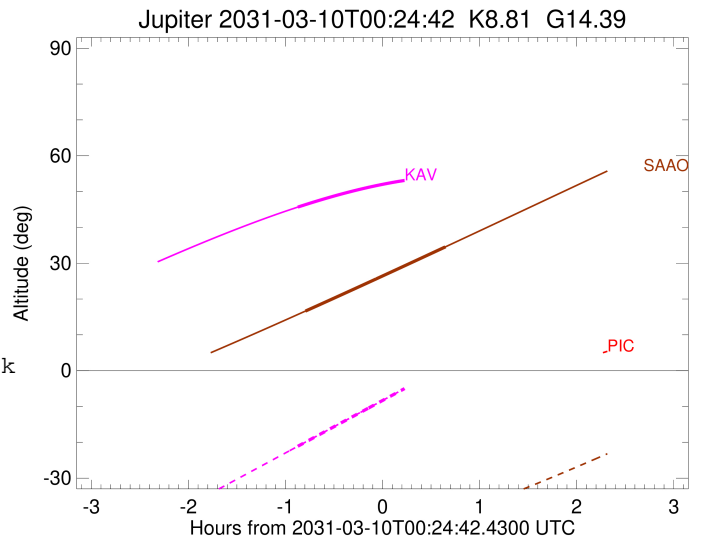
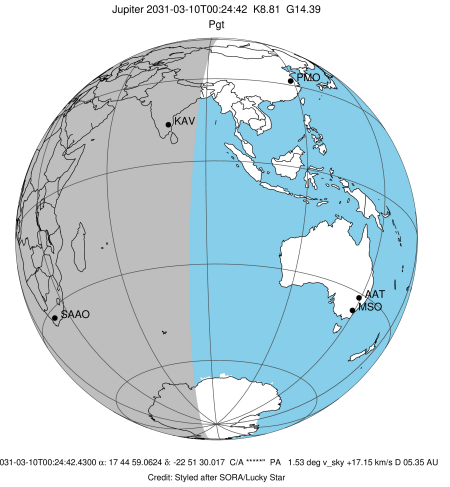


x: target alt < 5.0 deg or sun > -5.0 deg

Target	I/E	UTC	alt	alt-sun	radius	lat-geo	lat-geodetic
Jupiter	I	2031-03-09T23:32:21.525	45.65	-21.10	71487.2	-45.23	-48.92
Jupiter	E	2031-03-10T01:14:17.805	54.60	3.75x	71487.5	-43.36	-47.08

```

target                : Jupiter
target radius (km)   : 71492.00
C/A epoch             : 2031-03-10T00:20:13.280
Event type            : Pgt
: Jupiter occs: geocentric, topocentric
: Not a ringed target
Observer code         : SAAO
Location              : So. Afr. Astro. Obs. (Sutherland)
Latitude (deg)        : -32.37953
E. Longitude (deg)    : 20.81070
Altitude (km)         : 1.768
Gaia source ID        : 4116890637678260480
2Mass ID (if available) : 17445905-2251299
ICRS Star Coord at Epoch: 17h 44m 59.06244s -22:51:30.01733s
RUWE (>1.4 is poor)  : 1.57
K magnitude           : 8.809
G magnitude           : 14.389
RP magnitude          : 12.980
BP magnitude          : 16.735
DUPflag              : 0
Distance (au)         : 5.355
f0 (km)               : 0.00
g0 (km)               : 0.00
skyplane vel. (km/s)  : 17.15
Sun-Target sep (deg)  : 82.26
Sun-Moon sep (deg)    : 88.08
B (ring opening deg)  : -2.63
PA of pole (deg)      : 0.78
Pole direction: RA (deg): 268.05700
Dec (deg): 64.49651
C/A sky separation (") : 14.457
C/A sky separation (km) : 56144.7
NAIF SPICE kernels    : RAJobs_U111+rgf15.spk
URKALLv1.spk
naif0012.tls
nep097.bsp
nep101.bsp
sat4401.bsp
de440.bsp
earth_720101_070426.bpc
jup365.bsp
urall6.bsp
IAU_SATURN_for_RINGFIT.tpc
pck00010.tpc
earth_200101_990628_predict.bpc
uranus_ringframes_rfrench20220627_v1.tf
neptune_ringframes_rfrench20220702a_v1.tf
earth_flat_IAU.spk
    
```



x: target alt < 5.0 deg or sun > -5.0 deg

Target	I/E	UTC	alt	alt-sun	radius	lat-geo	lat-geodetic
Jupiter	I	2031-03-09T23:37:03.926	16.63	-51.65	71485.9	-52.93	-56.40
Jupiter	E	2031-03-10T01:03:35.529	34.56	-41.24	71486.3	-50.45	-54.02