

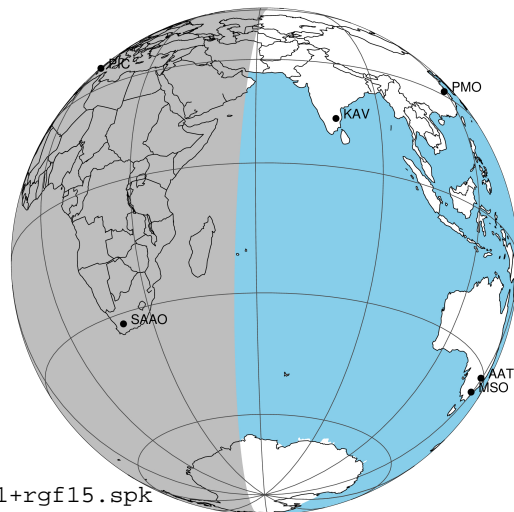
target : Jupiter
 target radius (km) : 71492.00
 C/A epoch : 2031-03-11T02:24:46.920
 Event type : Pgt
 : Jupiter occs: geocentric, topocentric
 : Not a ringed target
 Gaia source ID : 4068857510160866816
 2Mass ID (if available) : 17452856-2251403

Jupiter 2031-03-11T02:24:46 K8.90 G14.55 Pgt

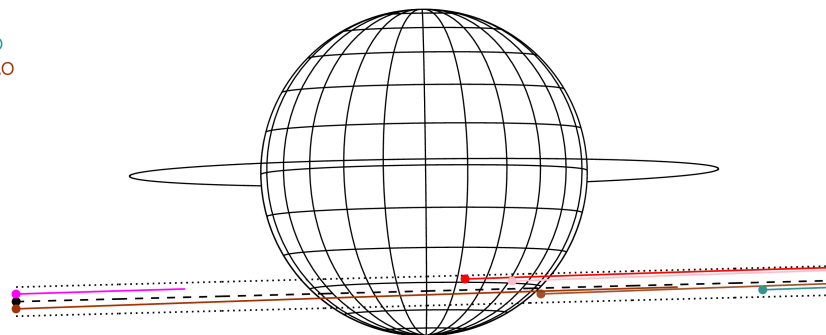
ICRS Star Coord at Epoch: 17h 45m 28.57311s -22:51:40.32207s

RUWE (>1.4 is poor) : 1.37
 K magnitude : 8.897
 G magnitude : 14.547
 RP magnitude : 13.131
 BP magnitude : 17.011
 DUPflag : 0
 Distance (au) : 5.337
 f0 (km) : 0.00
 g0 (km) : 0.00
 skyplane vel. (km/s) : 16.65
 Sun-Target sep (deg) : 83.23
 Sun-Moon sep (deg) : 73.31
 B (ring opening deg) : -2.63
 PA of pole (deg) : 0.73
 Pole direction: RA (deg): 268.05700
 Dec (deg): 64.49651
 C/A sky separation (") : 13.417
 C/A sky separation (km) : 51933.4
 NAIF SPICE kernels : RAJobs_U111+rgf15.spk

Jupiter 2031-03-11T02:24:46 K8.90 G14.55
 Pgt



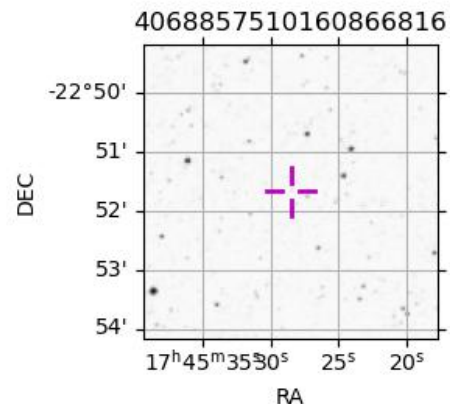
Earth
 PIC
 TEN
 KAV
 RIO
 ESO
 SAAO



2031-03-11T02:24:46.9200 α: 17 45 28.5731 δ: -22 51 40.322 C/A ***** PA 1.48 deg v_sky +16.65 km/s D 05.34 AU
 Credit: Styled after SORA/Lucky Star

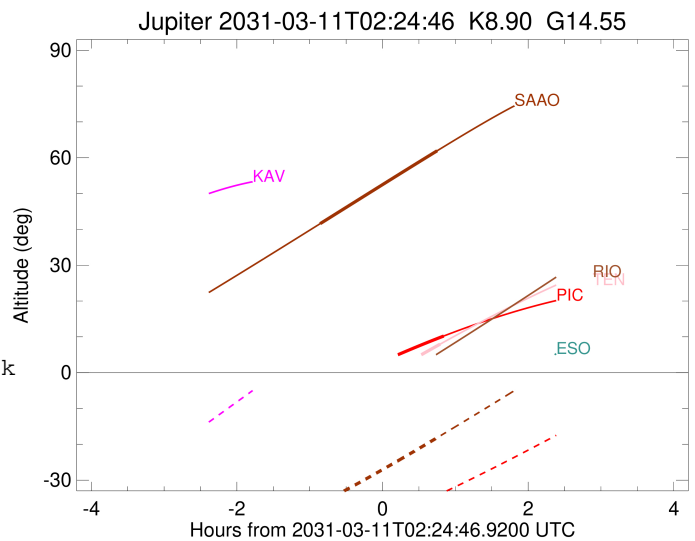
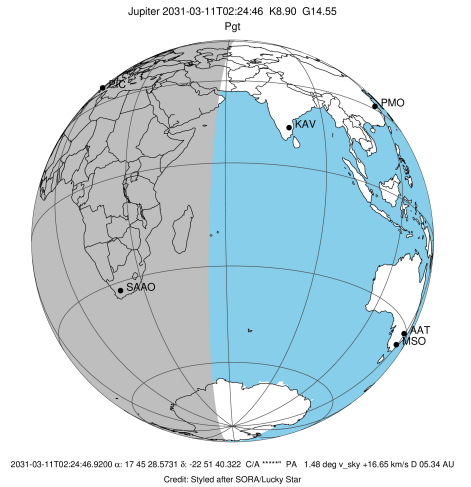
Observable events with sun below -5 deg and altitude above 5 deg

Obs	Location	lat	Elon	Target	Observed Events Interval	OEncode
PIC	Pic du Midi	42.9	0.1	+	MAR 11 03:15 - MAR 11 03:15	Pne
PAL	Palomar Mt (200")	33.4	243.1			Pnn
PMO	Purple Mtn Obs. Nanking	32.1	118.8			Pnn
KPNO	Kitt Peak Natl Obs	32.0	248.4			Pnn
MCD	McDonald Obs. 2.7m	30.7	256.0			Pnn
TEN	Teide Obs./Tenerife	28.3	343.5	+	MAR 11 03:12 - MAR 11 03:12	Pne
IRTF	Mauna Kea/IRTF	19.8	204.5			Pnn
KAV	Kavalur Observatory	12.6	78.8			Pnn
RIO	Rio de Janeiro	-22.9	316.8			Pnn
ESO	European Southern Obs. (3.6m)	-29.3	289.3			Pnn
AAT	Siding Spring (AAT)	-31.3	149.1			Pnn
SAAO	So. Afr. Astro. Obs. (Sutherland)	-32.4	20.8	+ +	MAR 11 01:33 - MAR 11 03:09	Pie
MSO	Mt. Stromlo Observatory	-35.3	149.0			Pnn



```

target                : Jupiter
target radius (km)   : 71492.00
C/A epoch             : 2031-03-11T02:20:51.220
Event type            : Pgt
: Jupiter occs: geocentric, topocentric
: Not a ringed target
Observer code         : PIC
Location              : Pic du Midi
Latitude (deg)        : 42.93656
E. Longitude (deg)    : 0.14231
Altitude (km)         : 2.890
Gaia source ID        : 4068857510160866816
2Mass ID (if available) : 17452856-2251403
ICRS Star Coord at Epoch: 17h 45m 28.57311s -22:51:40.32207s
RUWE (>1.4 is poor)  : 1.37
K magnitude           : 8.897
G magnitude           : 14.547
RP magnitude          : 13.131
BP magnitude          : 17.011
DUPflag              : 0
Distance (au)         : 5.337
f0 (km)               : 0.00
g0 (km)               : 0.00
skyplane vel. (km/s) : 16.65
Sun-Target sep (deg)  : 83.23
Sun-Moon sep (deg)   : 73.19
B (ring opening deg)  : -2.63
PA of pole (deg)     : 0.73
Pole direction: RA (deg): 268.05700
Dec (deg): 64.49651
C/A sky separation (") : 12.198
C/A sky separation (km) : 47217.5
NAIF SPICE kernels   : RAJobs_U111+rgf15.spk
URKALLv1.spk
naif0012.tls
nep097.bsp
nep101.bsp
sat4401.bsp
de440.bsp
earth_720101_070426.bpc
jup365.bsp
urall6.bsp
IAU_SATURN_for_RINGFIT.tpc
pck00010.tpc
earth_200101_990628_predict.bpc
uranus_ringframes_rfrench20220627_v1.tf
neptune_ringframes_rfrench20220702a_v1.tf
earth_flat_IAU.spk
    
```

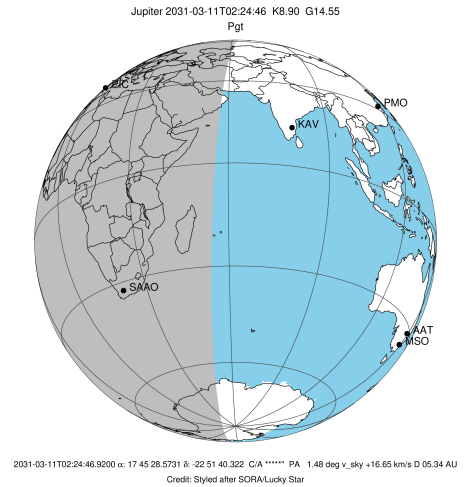


x: target alt < 5.0 deg or sun > -5.0 deg

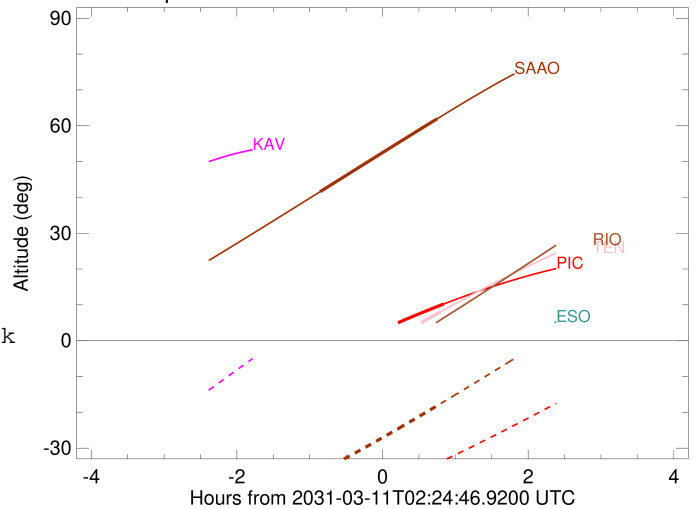
Target	I/E	UTC	alt	alt-sun	radius	lat-geo	lat-geodetic
Jupiter	I	2031-03-11T01:26:48.741	-6.05x	-47.49	71487.7	-42.47	-46.19
Jupiter	E	2031-03-11T03:15:11.274	10.22	-33.40	71488.0	-40.14	-43.85

```

target                : Jupiter
target radius (km)   : 71492.00
C/A epoch            : 2031-03-11T02:19:38.460
Event type           : Pgt
: Jupiter occs: geocentric, topocentric
: Not a ringed target
Observer code        : TEN
Location             : Teide Obs./Tenerife
Latitude (deg)       : 28.30050
E. Longitude (deg)   : 343.48909
Altitude (km)        : 2.395
Gaia source ID       : 4068857510160866816
2Mass ID (if available) : 17452856-2251403
ICRS Star Coord at Epoch: 17h 45m 28.57311s -22:51:40.32207s
RUWE (>1.4 is poor) : 1.37
K magnitude          : 8.897
G magnitude          : 14.547
RP magnitude         : 13.131
BP magnitude         : 17.011
DUPflag             : 0
Distance (au)        : 5.337
f0 (km)              : 0.00
g0 (km)              : 0.00
skyplane vel. (km/s) : 16.65
Sun-Target sep (deg) : 83.23
Sun-Moon sep (deg)   : 73.06
B (ring opening deg) : -2.63
PA of pole (deg)     : 0.73
Pole direction: RA (deg): 268.05700
Dec (deg): 64.49651
C/A sky separation (") : 12.634
C/A sky separation (km) : 48906.6
NAIF SPICE kernels   : RAJobs_U111+rgf15.spk
URKALLv1.spk
naif0012.tls
nep097.bsp
nep101.bsp
sat4401.bsp
de440.bsp
earth_720101_070426.bpc
jup365.bsp
urall6.bsp
IAU_SATURN_for_RINGFIT.tpc
pck00010.tpc
earth_200101_990628_predict.bpc
uranus_ringframes_rfrench20220627_v1.tf
neptune_ringframes_rfrench20220702a_v1.tf
earth_flat_IAU.spk
    
```



Jupiter 2031-03-11T02:24:46 K8.90 G14.55

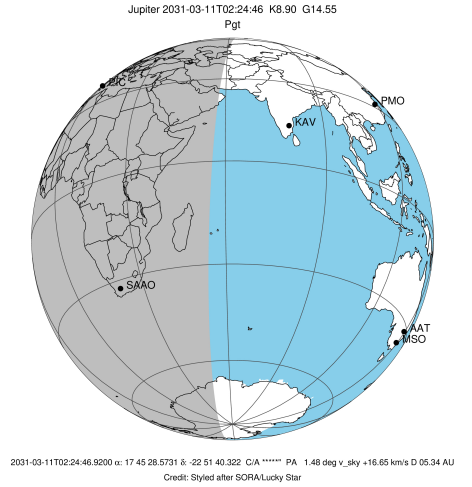


x: target alt < 5.0 deg or sun > -5.0 deg

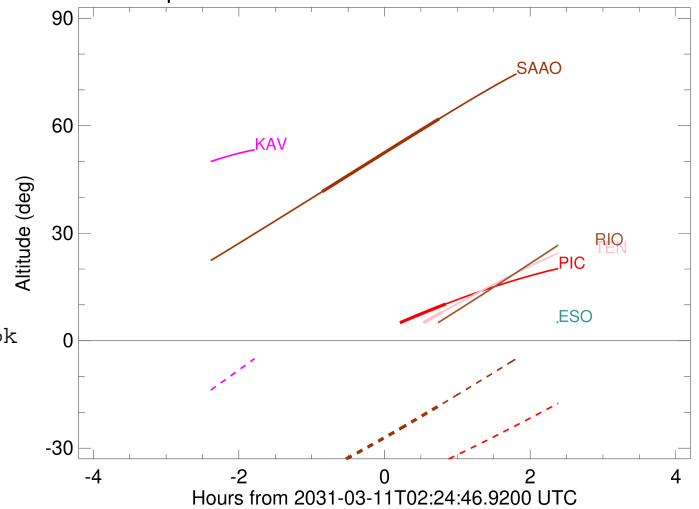
Target	I/E	UTC	alt	alt-sun	radius	lat-geo	lat-geodetic
Jupiter	I	2031-03-11T01:27:25.667	-13.01x	-65.57	71487.3	-44.41	-48.12
Jupiter	E	2031-03-11T03:12:11.768	7.95	-53.21	71487.8	-41.82	-45.54

```

target                : Jupiter
target radius (km)   : 71492.00
C/A epoch             : 2031-03-11T02:21:33.500
Event type            : Pgt
: Jupiter occs: geocentric, topocentric
: Not a ringed target
Observer code         : SAAO
Location              : So. Afr. Astro. Obs. (Sutherland)
Latitude (deg)       : -32.37953
E. Longitude (deg)   : 20.81070
Altitude (km)        : 1.768
Gaia source ID       : 4068857510160866816
2Mass ID (if available) : 17452856-2251403
ICRS Star Coord at Epoch: 17h 45m 28.57311s -22:51:40.32207s
RUWE (>1.4 is poor) : 1.37
K magnitude           : 8.897
G magnitude           : 14.547
RP magnitude          : 13.131
BP magnitude          : 17.011
DUPflag              : 0
Distance (au)        : 5.337
f0 (km)              : 0.00
g0 (km)              : 0.00
skyplane vel. (km/s) : 16.65
Sun-Target sep (deg) : 83.23
Sun-Moon sep (deg)   : 73.89
B (ring opening deg) : -2.63
PA of pole (deg)     : 0.73
Pole direction: RA (deg): 268.05700
Dec (deg): 64.49651
C/A sky separation (") : 13.844
C/A sky separation (km) : 53589.6
NAIF SPICE kernels   : RAJobs_U111+rgf15.spk
URKALLv1.spk
naif0012.tls
nep097.bsp
nep101.bsp
sat4401.bsp
de440.bsp
earth_720101_070426.bpc
jup365.bsp
urall6.bsp
IAU_SATURN_for_RINGFIT.tpc
pck00010.tpc
earth_200101_990628_predict.bpc
uranus_ringframes_rfrench20220627_v1.tf
neptune_ringframes_rfrench20220702a_v1.tf
earth_flat_IAU.spk
    
```



Jupiter 2031-03-11T02:24:46 K8.90 G14.55



x: target alt < 5.0 deg or sun > -5.0 deg

Target	I/E	UTC	alt	alt-sun	radius	lat-geo	lat-geodetic
Jupiter	I	2031-03-11T01:33:31.309	41.61	-36.52	71486.5	-49.66	-53.26
Jupiter	E	2031-03-11T03:09:48.257	61.93	-18.15	71486.8	-47.40	-51.06