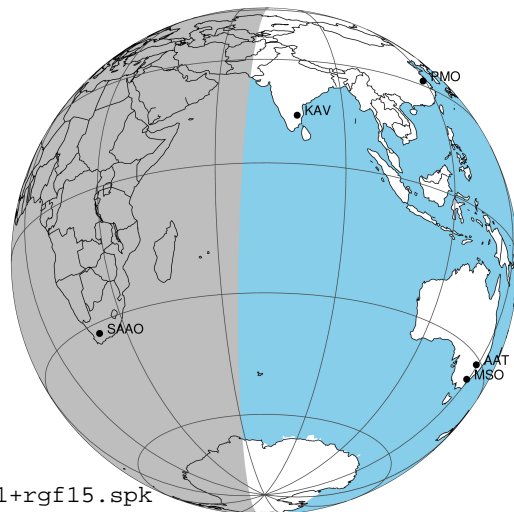


target : Jupiter
 target radius (km) : 71492.00
 C/A epoch : 2031-03-12T01:44:34.950
 Event type : Pgt
 : Jupiter occs: geocentric, topocentric
 : Not a ringed target
 Gaia source ID : 4068854791344384512
 2Mass ID (if available) : 17455439-2251527

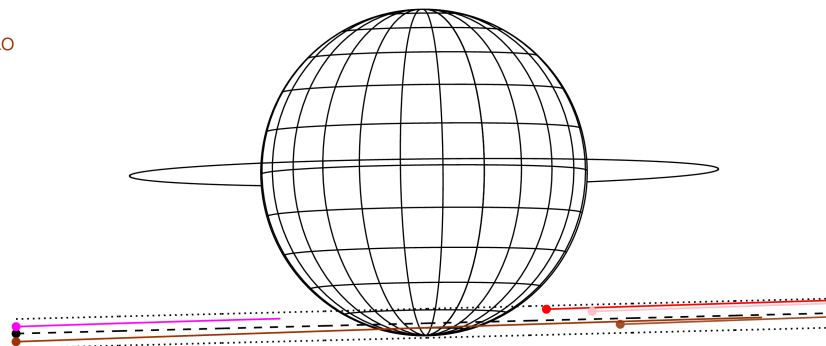
Jupiter 2031-03-12T01:44:34 K9.78 G14.90 Pgt

ICRS Star Coord at Epoch: 17h 45m 54.38709s -22:51:53.05916s
 RUWE (>1.4 is poor) : 0.99
 K magnitude : 9.783
 G magnitude : 14.901
 RP magnitude : 13.611
 BP magnitude : 16.741
 DUPflag : 0
 Distance (au) : 5.321
 f0 (km) : 0.00
 g0 (km) : 0.00
 skyplane vel. (km/s) : 16.20
 Sun-Target sep (deg) : 84.10
 Sun-Moon sep (deg) : 60.21
 B (ring opening deg) : -2.63
 PA of pole (deg) : 0.68
 Pole direction: RA (deg): 268.05700
 Dec (deg): 64.49651
 C/A sky separation (") : 17.116
 C/A sky separation (km) : 66058.6
 NAIF SPICE kernels : RAJobs_U111+rgf15.spk
 URKALLv1.spk
 naif0012.tls
 nep097.bsp
 nep101.bsp
 sat4401.bsp

2031-03-12T01:44:34.9500 α: 17 45 54.3871 δ: -22 51 53.059 C/A ***** PA 1.44 deg v_sky +16.20 km/s D 05.32 AU
 Credit: Styled after SORA/Lucky Star

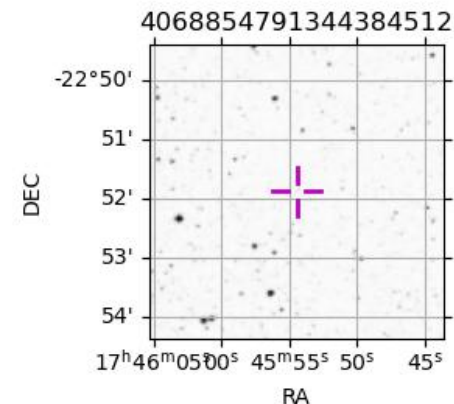


Earth
 PIC
 TEN
 KAV
 RIO
 SAAO



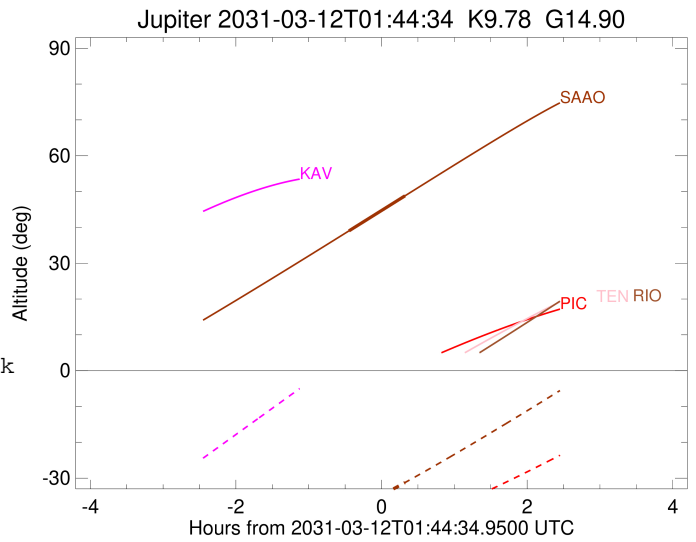
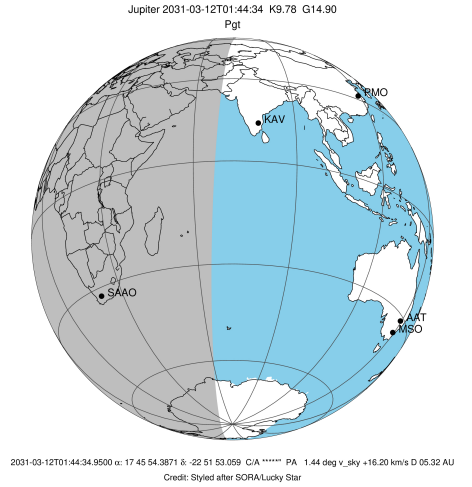
Observable events with sun below -5 deg and altitude above 5 deg

Obs	Location	lat	Elon	Target	Observed Events Interval	OCode
PIC	Pic du Midi	42.9	0.1			Pnn
PAL	Palomar Mt (200")	33.4	243.1			Pnn
PMO	Purple Mtn Obs. Nanking	32.1	118.8			Pnn
KPNO	Kitt Peak Natl Obs	32.0	248.4			Pnn
MCD	McDonald Obs. 2.7m	30.7	256.0			Pnn
TEN	Teide Obs./Tenerife	28.3	343.5			Pnn
IRTF	Mauna Kea/IRTF	19.8	204.5			Pnn
KAV	Kavalur Observatory	12.6	78.8			Pnn
RIO	Rio de Janeiro	-22.9	316.8			Pnn
ESO	European Southern Obs. (3.6m)	-29.3	289.3			Pnn
AAT	Siding Spring (AAT)	-31.3	149.1			Pnn
SAAO	So. Afr. Astro. Obs. (Sutherland)	-32.4	20.8	+ +	MAR 12 01:17 - MAR 12 02:03	Pie
MSO	Mt. Stromlo Observatory	-35.3	149.0			Pnn



```

target                : Jupiter
target radius (km)   : 71492.00
C/A epoch             : 2031-03-12T01:40:50.120
Event type            : Pgt
: Jupiter occs: geocentric, topocentric
: Not a ringed target
Observer code         : SAAO
Location              : So. Afr. Astro. Obs. (Sutherland)
Latitude (deg)       : -32.37953
E. Longitude (deg)   : 20.81070
Altitude (km)        : 1.768
Gaia source ID       : 4068854791344384512
2Mass ID (if available) : 17455439-2251527
ICRS Star Coord at Epoch: 17h 45m 54.38709s -22:51:53.05916s
RUWE (>1.4 is poor) : 0.99
K magnitude           : 9.783
G magnitude           : 14.901
RP magnitude          : 13.611
BP magnitude          : 16.741
DUPflag              : 0
Distance (au)        : 5.321
f0 (km)              : 0.00
g0 (km)              : 0.00
skyplane vel. (km/s) : 16.20
Sun-Target sep (deg) : 84.10
Sun-Moon sep (deg)   : 60.48
B (ring opening deg) : -2.63
PA of pole (deg)     : 0.68
Pole direction: RA (deg): 268.05700
Dec (deg): 64.49651
C/A sky separation (") : 17.612
C/A sky separation (km) : 67974.2
NAIF SPICE kernels   : RAJobs_U111+rgf15.spk
URKALLv1.spk
naif0012.tls
nep097.bsp
nep101.bsp
sat4401.bsp
de440.bsp
earth_720101_070426.bpc
jup365.bsp
urall6.bsp
IAU_SATURN_for_RINGFIT.tpc
pck00010.tpc
earth_200101_990628_predict.bpc
uranus_ringframes_rfrench20220627_v1.tf
neptune_ringframes_rfrench20220702a_v1.tf
earth_flat_IAU.spk
    
```



x: target alt < 5.0 deg or sun > -5.0 deg

Target	I/E	UTC	alt	alt-sun	radius	lat-geo	lat-geodetic
Jupiter	I	2031-03-12T01:17:47.232	39.02	-39.45	71483.3	-72.99	-74.92
Jupiter	E	2031-03-12T02:03:56.360	48.80	-31.23	71483.5	-70.61	-72.77