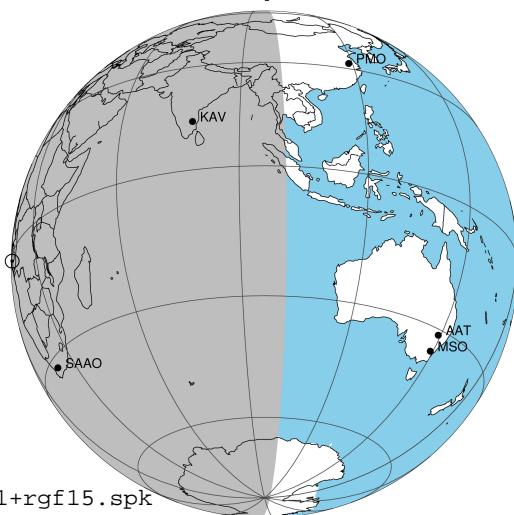


target : Jupiter
 target radius (km) : 71492.00
 C/A epoch : 2031-03-23T23:24:00.070
 Event type : Pgt
 : Jupiter occs: geocentric, topocentric
 : Not a ringed target
 Gaia source ID : 4068897779671299456
 2Mass ID (if available) : 17501741-2252565

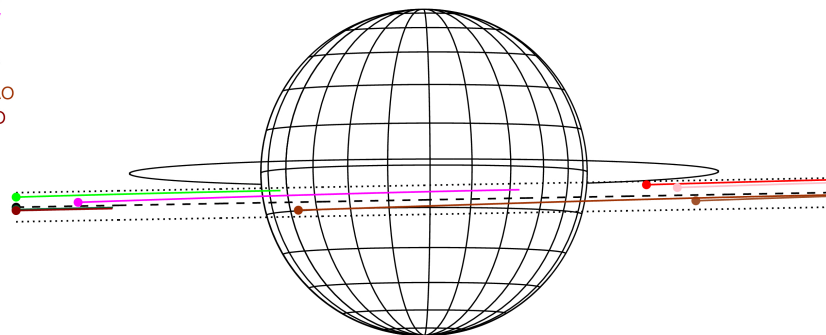
Jupiter 2031-03-23T23:24:00 K7.91 G14.78 Pgt

ICRS Star Coord at Epoch: 17h 50m 17.41872s -22:52:56.56729s
 RUWE (>1.4 is poor) : 1.17
 K magnitude : 7.909
 G magnitude : 14.777
 RP magnitude : 13.210
 BP magnitude : 17.776
 DUPflag : 0
 Distance (au) : 5.129
 f0 (km) : 0.00
 g0 (km) : 0.00
 skyplane vel. (km/s) : 10.58
 Sun-Target sep (deg) : 94.93
 Sun-Moon sep (deg) : 105.01
 B (ring opening deg) : -2.62
 PA of pole (deg) : 0.21
 Pole direction: RA (deg): 268.05699
 Dec (deg): 64.49651
 C/A sky separation (") : 3.223
 C/A sky separation (km) : 11987.9
 NAIF SPICE kernels : RAJobs_U111+rgf15.spk



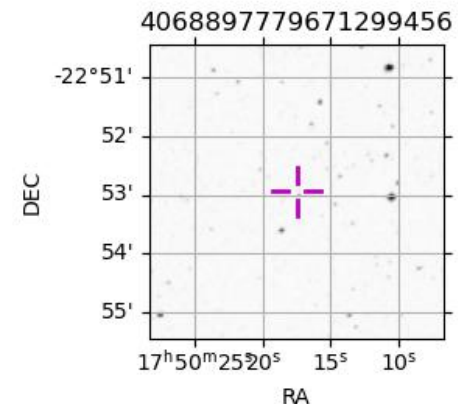
2031-03-23T23:24:00.0700 at: 17 50 17.41872 s -22 52 56.567 C/A 3.234" PA 1.03 deg v_sky +10.58 km/s D 05.13 AU
 Credit: Styled after SORA/Lucky Star

Earth
 PIC
 PMO
 TEN
 KAV
 RIO
 AAT
 SAAO
 MSO



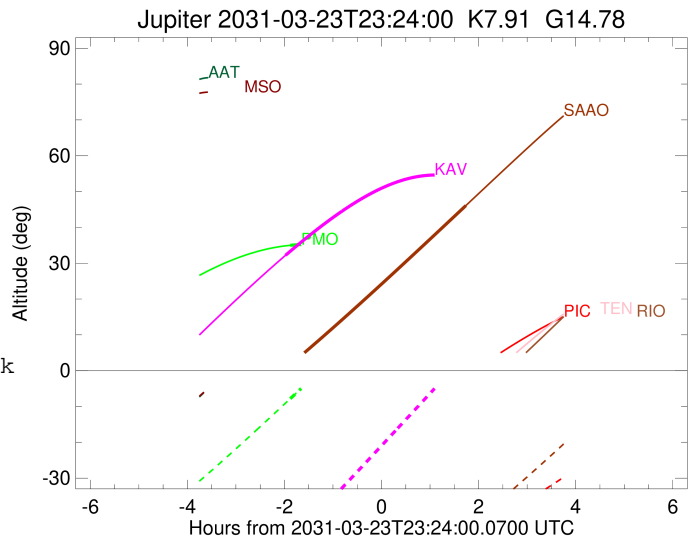
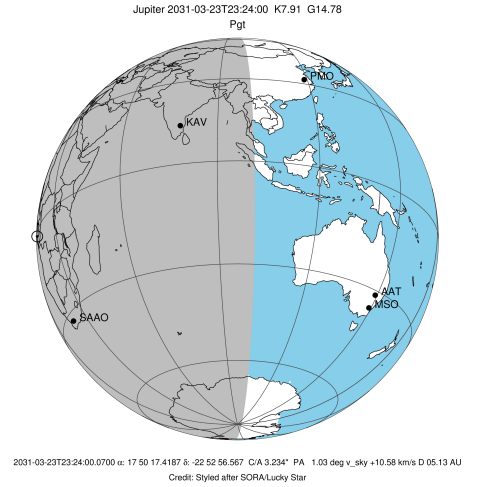
Observable events with sun below -5 deg and altitude above 5 deg

Obs	Location	lat	Elon	Target	Observed Events Interval	OCode
PIC	Pic du Midi	42.9	0.1			Pnn
PAL	Palomar Mt (200")	33.4	243.1			Pnn
PMO	Purple Mtn Obs. Nanking	32.1	118.8	+	MAR 23 21:31 - MAR 23 21:31	Pin
KPNO	Kitt Peak Natl Obs	32.0	248.4			Pnn
MCD	McDonald Obs. 2.7m	30.7	256.0			Pnn
TEN	Teide Obs./Tenerife	28.3	343.5			Pnn
IRTF	Mauna Kea/IRTF	19.8	204.5			Pnn
KAV	Kavalur Observatory	12.6	78.8	+	MAR 23 21:25 - MAR 23 21:25	Pin
RIO	Rio de Janeiro	-22.9	316.8			Pnn
ESO	European Southern Obs. (3.6m)	-29.3	289.3			Pnn
AAT	Siding Spring (AAT)	-31.3	149.1			Pnn
SAAO	So. Afr. Astro. Obs. (Sutherland)	-32.4	20.8	+	MAR 24 01:08 - MAR 24 01:08	Pne
MSO	Mt. Stromlo Observatory	-35.3	149.0			Pnn



```

target                : Jupiter
target radius (km)   : 71492.00
C/A epoch            : 2031-03-23T23:27:16.200
Event type          : Pgt
                    : Jupiter occs: geocentric, topocentric
                    : Not a ringed target
Observer code       : PMO
Location            : Purple Mtn Obs. Nanking
Latitude (deg)      : 32.06667
E. Longitude (deg)  : 118.82089
Altitude (km)       : 0.364
Gaia source ID      : 4068897779671299456
2Mass ID (if available) : 17501741-2252565
ICRS Star Coord at Epoch: 17h 50m 17.41872s -22:52:56.56729s
RUWE (>1.4 is poor) : 1.17
K magnitude          : 7.909
G magnitude          : 14.777
RP magnitude         : 13.210
BP magnitude         : 17.776
DUPflag             : 0
Distance (au)        : 5.129
f0 (km)              : 0.00
g0 (km)              : 0.00
skyplane vel. (km/s) : 10.58
Sun-Target sep (deg) : 94.93
Sun-Moon sep (deg)  : 105.58
B (ring opening deg) : -2.62
PA of pole (deg)    : 0.21
Pole direction: RA (deg): 268.05699
Dec (deg): 64.49651
C/A sky separation ("): 1.863
C/A sky separation (km): 6930.1
NAIF SPICE kernels  : RAJobs_U111+rgf15.spk
URKALLv1.spk
naif0012.tls
nep097.bsp
nep101.bsp
sat4401.bsp
de440.bsp
earth_720101_070426.bpc
jup365.bsp
urall6.bsp
IAU_SATURN_for_RINGFIT.tpc
pck00010.tpc
earth_200101_990628_predict.bpc
uranus_ringframes_rfrench20220627_v1.tf
neptune_ringframes_rfrench20220702a_v1.tf
earth_flat_IAU.spk
    
```

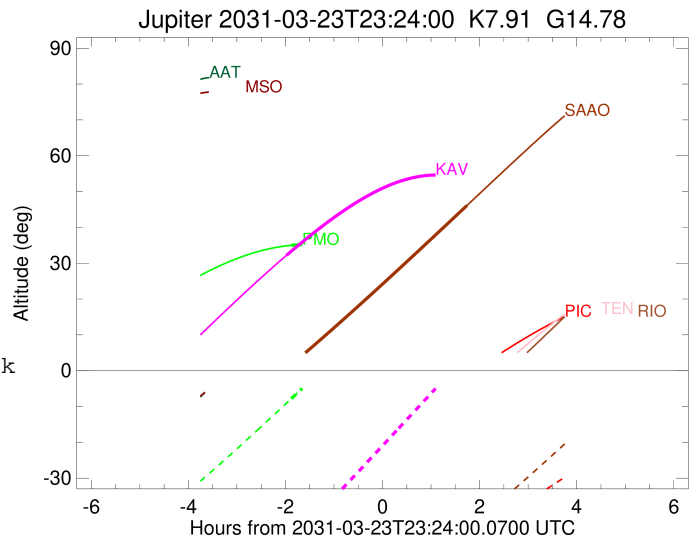
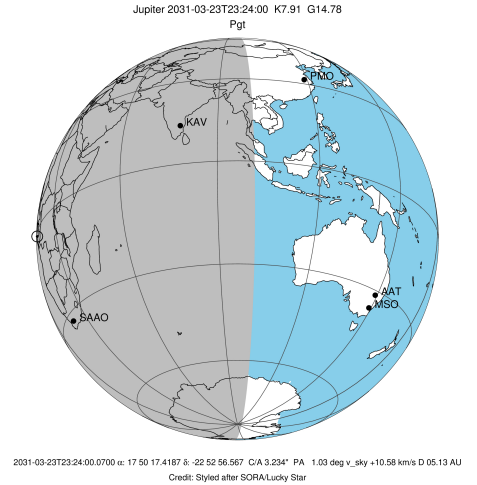


x: target alt < 5.0 deg or sun > -5.0 deg

Target	I/E	UTC	alt	alt-sun	radius	lat-geo	lat-geodetic
Jupiter	I	2031-03-23T21:31:13.664	34.99	-7.83	71491.9	-6.27	-7.16
Jupiter	E	2031-03-24T01:22:54.020	15.49	39.93x	71491.9	-5.24	-5.98

```

target                : Jupiter
target radius (km)   : 71492.00
C/A epoch             : 2031-03-23T23:21:00.880
Event type           : Pgt
: Jupiter occs: geocentric, topocentric
: Not a ringed target
Observer code        : KAV
Location             : Kavalur Observatory
Latitude (deg)       : 12.57556
E. Longitude (deg)   : 78.83167
Altitude (km)        : 0.722
Gaia source ID       : 4068897779671299456
2Mass ID (if available) : 17501741-2252565
ICRS Star Coord at Epoch: 17h 50m 17.41872s -22:52:56.56729s
RUWE (>1.4 is poor) : 1.17
K magnitude           : 7.909
G magnitude           : 14.777
RP magnitude          : 13.210
BP magnitude          : 17.776
DUPflag              : 0
Distance (au)        : 5.129
f0 (km)              : 0.00
g0 (km)              : 0.00
skyplane vel. (km/s) : 10.58
Sun-Target sep (deg) : 94.93
Sun-Moon sep (deg)   : 105.66
B (ring opening deg) : -2.62
PA of pole (deg)     : 0.21
Pole direction: RA (deg): 268.05699
Dec (deg): 64.49651
C/A sky separation (") : 2.268
C/A sky separation (km) : 8438.0
NAIF SPICE kernels   : RAJobs_U111+rgf15.spk
URKALLv1.spk
naif0012.tls
nep097.bsp
nep101.bsp
sat4401.bsp
de440.bsp
earth_720101_070426.bpc
jup365.bsp
urall6.bsp
IAU_SATURN_for_RINGFIT.tpc
pck00010.tpc
earth_200101_990628_predict.bpc
uranus_ringframes_rfrench20220627_v1.tf
neptune_ringframes_rfrench20220702a_v1.tf
earth_flat_IAU.spk
    
```

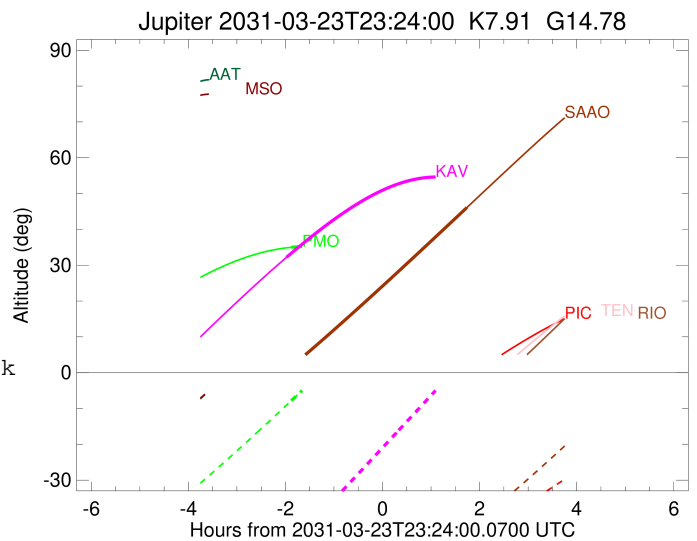
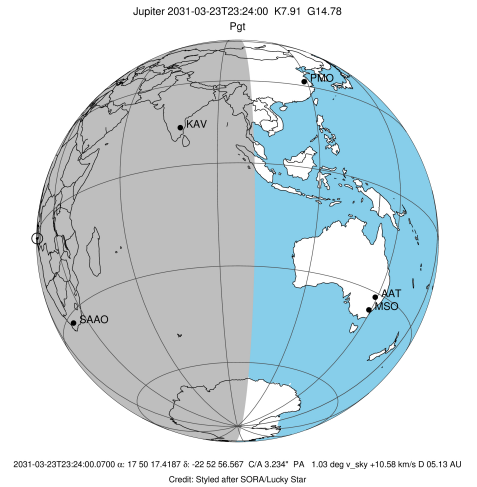


x: target alt < 5.0 deg or sun > -5.0 deg

Target	I/E	UTC	alt	alt-sun	radius	lat-geo	lat-geodetic
Jupiter	I	2031-03-23T21:25:21.276	32.19	-49.36	71491.8	-8.14	-9.29
Jupiter	E	2031-03-24T01:17:56.614	52.84	6.82x	71491.9	-5.86	-6.70

```

target                : Jupiter
target radius (km)   : 71492.00
C/A epoch             : 2031-03-23T23:16:07.270
Event type           : Pgt
: Jupiter occs: geocentric, topocentric
: Not a ringed target
Observer code        : SAAO
Location             : So. Afr. Astro. Obs. (Sutherland)
Latitude (deg)       : -32.37953
E. Longitude (deg)   : 20.81070
Altitude (km)        : 1.768
Gaia source ID       : 4068897779671299456
2Mass ID (if available) : 17501741-2252565
ICRS Star Coord at Epoch: 17h 50m 17.41872s -22:52:56.56729s
RUWE (>1.4 is poor) : 1.17
K magnitude           : 7.909
G magnitude           : 14.777
RP magnitude          : 13.210
BP magnitude          : 17.776
DUPflag              : 0
Distance (au)        : 5.129
f0 (km)              : 0.00
g0 (km)              : 0.00
skyplane vel. (km/s) : 10.58
Sun-Target sep (deg) : 94.93
Sun-Moon sep (deg)   : 105.18
B (ring opening deg) : -2.62
PA of pole (deg)     : 0.21
Pole direction: RA (deg): 268.05699
Dec (deg): 64.49651
C/A sky separation (") : 3.958
C/A sky separation (km) : 14722.2
NAIF SPICE kernels   : RAJobs_U111+rgf15.spk
URKALLv1.spk
naif0012.tls
nep097.bsp
nep101.bsp
sat4401.bsp
de440.bsp
earth_720101_070426.bpc
jup365.bsp
urall6.bsp
IAU_SATURN_for_RINGFIT.tpc
pck00010.tpc
earth_200101_990628_predict.bpc
uranus_ringframes_rfrench20220627_v1.tf
neptune_ringframes_rfrench20220702a_v1.tf
earth_flat_IAU.spk
    
```



x: target alt < 5.0 deg or sun > -5.0 deg

Target	I/E	UTC	alt	alt-sun	radius	lat-geo	lat-geodetic
Jupiter	I	2031-03-23T21:26:15.154	0.70x	-54.09	71491.5	-13.51	-15.35
Jupiter	E	2031-03-24T01:08:18.946	46.09	-43.94	71491.7	-10.30	-11.73