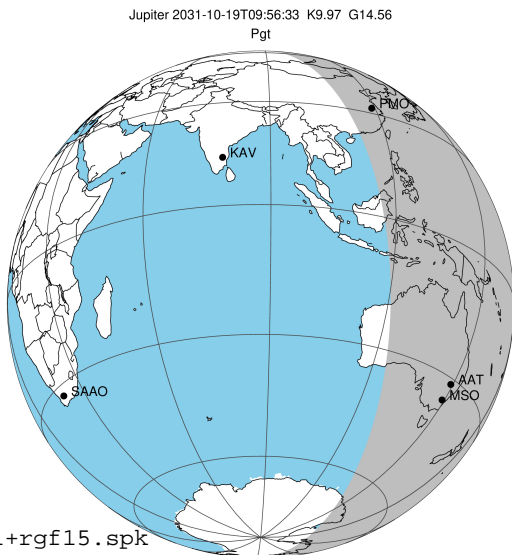


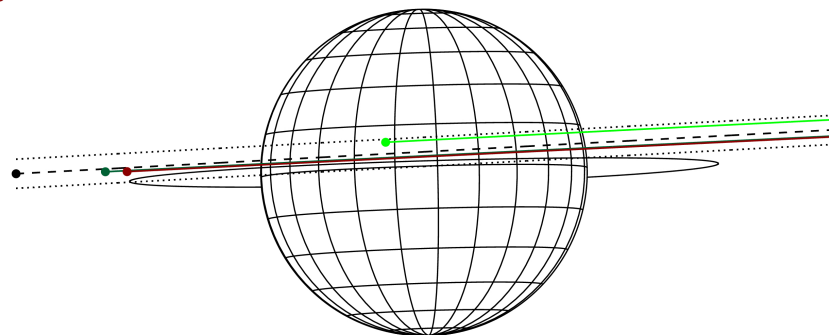
target : Jupiter
 target radius (km) : 71492.00
 C/A epoch : 2031-10-19T09:56:33.020
 Event type : Pgt
 : Jupiter occs: geocentric, topocentric
 : Not a ringed target
 Gaia source ID : 4116635168634433792
 2Mass ID (if available) : 17360463-2311076

Jupiter 2031-10-19T09:56:33 K9.97 G14.56 Pgt

ICRS Star Coord at Epoch: 17h 36m 04.62867s -23:11:07.97420s
 RUWE (>1.4 is poor) : 0.91
 K magnitude : 9.975
 G magnitude : 14.557
 RP magnitude : 13.381
 BP magnitude : 16.053
 DUPflag : 0
 Distance (au) : 5.677
 f0 (km) : 0.00
 g0 (km) : 0.00
 skyplane vel. (km/s) : 28.46
 Sun-Target sep (deg) : 59.13
 Sun-Moon sep (deg) : 20.35
 B (ring opening deg) : -2.26
 PA of pole (deg) : 1.74
 Pole direction: RA (deg): 268.05681
 Dec (deg): 64.49652
 C/A sky separation (") : 2.196
 C/A sky separation (km) : 9041.3
 NAIF SPICE kernels : RAJobs_U111+rgf15.spk



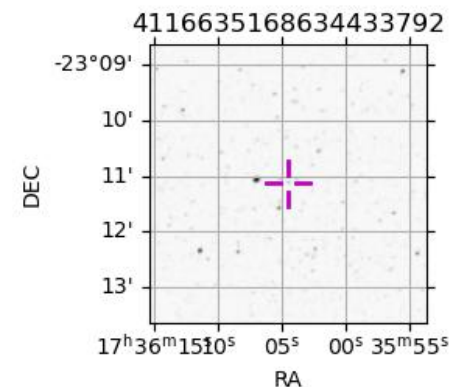
Earth
 PMO
 AAT
 MSO



2031-10-19T09:56:33.0200 cc: 17 36 04.62867 s: -23 11 07.974 C/A 2.187" PA 183.07 deg v_sky +28.46 km/s D 05.68 AU
 Credit: Styled after SORA/Lucky Star

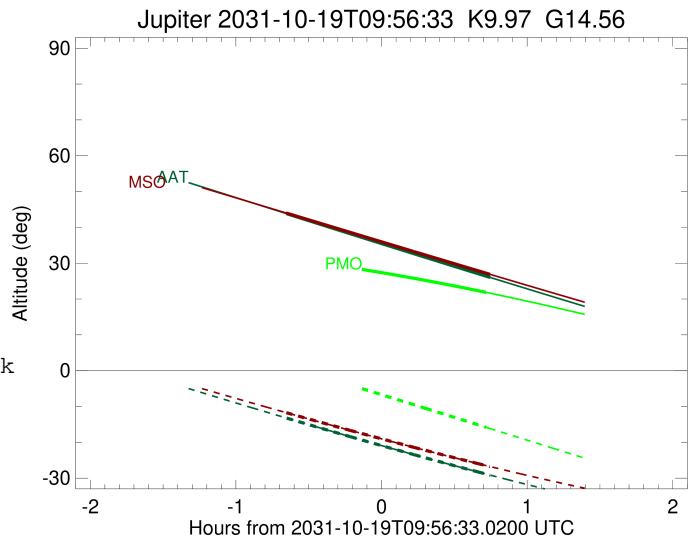
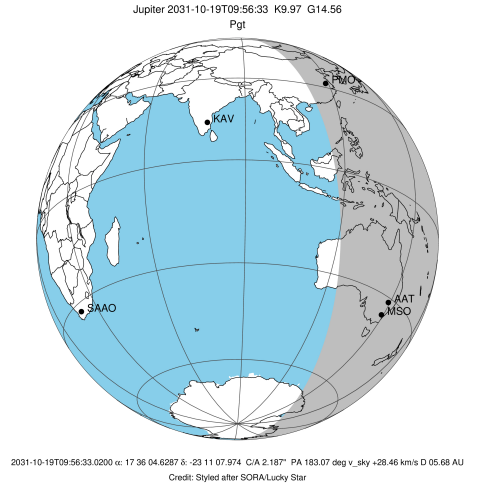
Observable events with sun below -5 deg and altitude above 5 deg

Obs	Location	lat	Elon	Target	Observed Events Interval	OCode
PIC	Pic du Midi	42.9	0.1			Pnn
PAL	Palomar Mt (200")	33.4	243.1			Pnn
PMO	Purple Mtn Obs. Nanking	32.1	118.8	+	OCT 19 10:39 - OCT 19 10:39	Pne
KPNO	Kitt Peak Natl Obs	32.0	248.4			Pnn
MCD	McDonald Obs. 2.7m	30.7	256.0			Pnn
TEN	Teide Obs./Tenerife	28.3	343.5			Pnn
IRTF	Mauna Kea/IRTF	19.8	204.5			Pnn
KAV	Kavalur Observatory	12.6	78.8			Pnn
RIO	Rio de Janeiro	-22.9	316.8			Pnn
ESO	European Southern Obs. (3.6m)	-29.3	289.3			Pnn
AAT	Siding Spring (AAT)	-31.3	149.1	+ +	OCT 19 09:17 - OCT 19 10:41	Pie
SAAO	So. Afr. Astro. Obs. (Sutherland)	-32.4	20.8			Pnn
MSO	Mt. Stromlo Observatory	-35.3	149.0	+ +	OCT 19 09:17 - OCT 19 10:41	Pie



```

target                : Jupiter
target radius (km)   : 71492.00
C/A epoch             : 2031-10-19T09:58:04.770
Event type            : Pgt
: Jupiter occs: geocentric, topocentric
: Not a ringed target
Observer code         : PMO
Location              : Purple Mtn Obs. Nanking
Latitude (deg)       : 32.06667
E. Longitude (deg)   : 118.82089
Altitude (km)        : 0.364
Gaia source ID       : 4116635168634433792
2Mass ID (if available) : 17360463-2311076
ICRS Star Coord at Epoch: 17h 36m 04.62867s -23:11:07.97420s
RUWE (>1.4 is poor) : 0.91
K magnitude           : 9.975
G magnitude           : 14.557
RP magnitude          : 13.381
BP magnitude          : 16.053
DUPflag              : 0
Distance (au)        : 5.677
f0 (km)              : 0.00
g0 (km)              : 0.00
skyplane vel. (km/s) : 28.46
Sun-Target sep (deg) : 59.13
Sun-Moon sep (deg)   : 20.85
B (ring opening deg) : -2.26
PA of pole (deg)     : 1.74
Pole direction: RA (deg): 268.05681
Dec (deg): 64.49652
C/A sky separation ("): 3.422
C/A sky separation (km): 14088.8
NAIF SPICE kernels   : RAJobs_U111+rgf15.spk
URKALLv1.spk
naif0012.tls
nep097.bsp
nep101.bsp
sat4401.bsp
de440.bsp
earth_720101_070426.bpc
jup365.bsp
urall6.bsp
IAU_SATURN_for_RINGFIT.tpc
pck00010.tpc
earth_200101_990628_predict.bpc
uranus_ringframes_rfrench20220627_v1.tf
neptune_ringframes_rfrench20220702a_v1.tf
earth_flat_IAU.spk
    
```

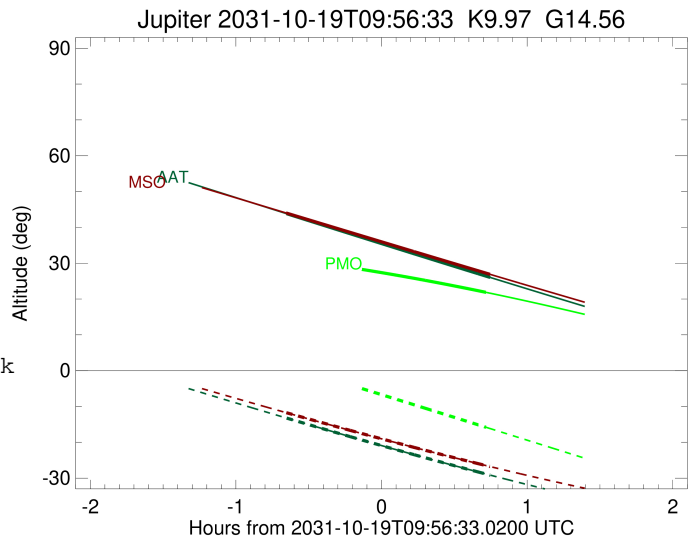
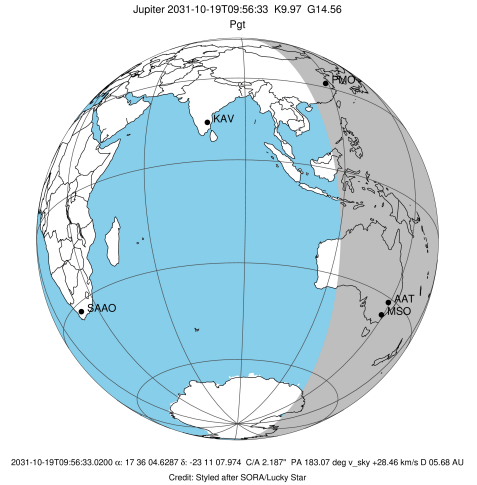


x: target alt < 5.0 deg or sun > -5.0 deg

Target	I/E	UTC	alt	alt-sun	radius	lat-geo	lat-geodetic
Jupiter	I	2031-10-19T09:16:29.923	31.32	1.68x	71491.8	10.13	11.54
Jupiter	E	2031-10-19T10:39:35.266	21.86	-15.80	71491.7	12.53	14.26

```

target                : Jupiter
target radius (km)   : 71492.00
C/A epoch             : 2031-10-19T09:59:27.030
Event type            : Pgt
: Jupiter occs: geocentric, topocentric
: Not a ringed target
Observer code         : AAT
Location              : Siding Spring (AAT)
Latitude (deg)        : -31.27703
E. Longitude (deg)    : 149.06608
Altitude (km)         : 1.164
Gaia source ID        : 4116635168634433792
2Mass ID (if available) : 17360463-2311076
ICRS Star Coord at Epoch: 17h 36m 04.62867s -23:11:07.97420s
RUWE (>1.4 is poor) : 0.91
K magnitude           : 9.975
G magnitude           : 14.557
RP magnitude          : 13.381
BP magnitude          : 16.053
DUPflag              : 0
Distance (au)         : 5.677
f0 (km)               : 0.00
g0 (km)               : 0.00
skyplane vel. (km/s) : 28.46
Sun-Target sep (deg) : 59.13
Sun-Moon sep (deg)   : 21.26
B (ring opening deg) : -2.26
PA of pole (deg)     : 1.74
Pole direction: RA (deg): 268.05681
Dec (deg): 64.49652
C/A sky separation ("): 1.764
C/A sky separation (km): 7265.3
NAIF SPICE kernels   : RAJobs_U111+rgf15.spk
URKALLv1.spk
naif0012.tls
nep097.bsp
nep101.bsp
sat4401.bsp
de440.bsp
earth_720101_070426.bpc
jup365.bsp
urall6.bsp
IAU_SATURN_for_RINGFIT.tpc
pck00010.tpc
earth_200101_990628_predict.bpc
uranus_ringframes_rfrench20220627_v1.tf
neptune_ringframes_rfrench20220702a_v1.tf
earth_flat_IAU.spk
    
```

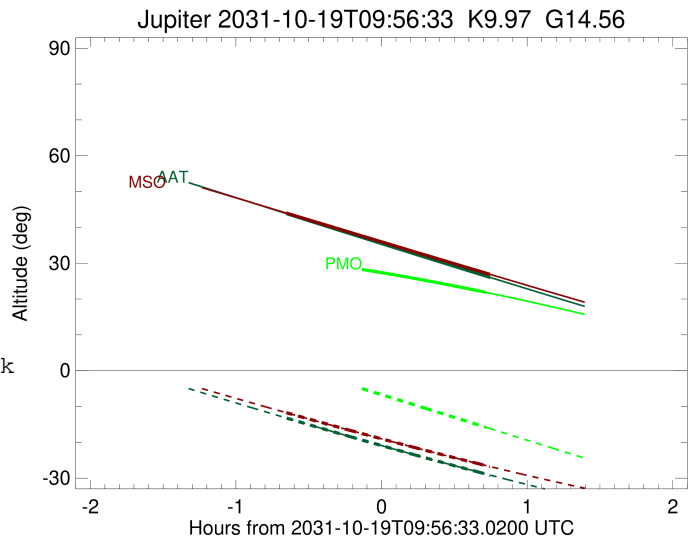
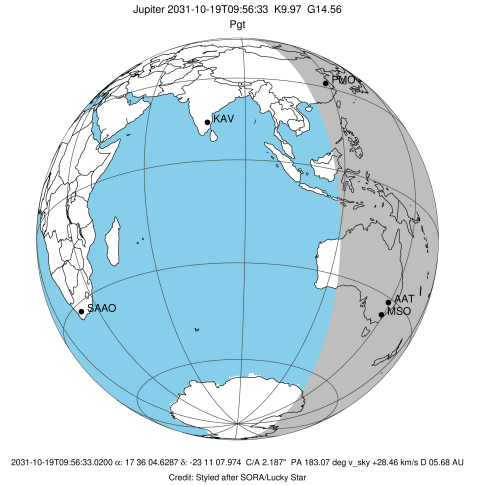


x: target alt < 5.0 deg or sun > -5.0 deg

Target	I/E	UTC	alt	alt-sun	radius	lat-geo	lat-geodetic
Jupiter	I	2031-10-19T09:17:27.553	43.82	-13.24	71492.0	4.74	5.41
Jupiter	E	2031-10-19T10:41:19.688	26.02	-29.15	71491.9	6.88	7.86

```

target                : Jupiter
target radius (km)   : 71492.00
C/A epoch            : 2031-10-19T09:59:19.820
Event type           : Pgt
: Jupiter occs: geocentric, topocentric
: Not a ringed target
Observer code        : MSO
Location             : Mt. Stromlo Observatory
Latitude (deg)       : -35.32000
E. Longitude (deg)   : 149.00833
Altitude (km)        : 0.770
Gaia source ID       : 4116635168634433792
2Mass ID (if available) : 17360463-2311076
ICRS Star Coord at Epoch: 17h 36m 04.62867s -23:11:07.97420s
RUWE (>1.4 is poor) : 0.91
K magnitude           : 9.975
G magnitude           : 14.557
RP magnitude         : 13.381
BP magnitude         : 16.053
DUPflag              : 0
Distance (au)        : 5.677
f0 (km)               : 0.00
g0 (km)               : 0.00
skyplane vel. (km/s) : 28.46
Sun-Target sep (deg) : 59.13
Sun-Moon sep (deg)   : 21.24
B (ring opening deg) : -2.26
PA of pole (deg)     : 1.74
Pole direction: RA (deg): 268.05681
Dec (deg): 64.49652
C/A sky separation ("): 1.668
C/A sky separation (km): 6867.7
NAIF SPICE kernels   : RAJobs_U111+rgf15.spk
URKALLv1.spk
naif0012.tls
nep097.bsp
nep101.bsp
sat4401.bsp
de440.bsp
earth_720101_070426.bpc
jup365.bsp
urall6.bsp
IAU_SATURN_for_RINGFIT.tpc
pck00010.tpc
earth_200101_990628_predict.bpc
uranus_ringframes_rfrench20220627_v1.tf
neptune_ringframes_rfrench20220702a_v1.tf
earth_flat_IAU.spk
    
```



x: target alt < 5.0 deg or sun > -5.0 deg

Target	I/E	UTC	alt	alt-sun	radius	lat-geo	lat-geodetic
Jupiter	I	2031-10-19T09:17:19.805	43.99	-11.73	71492.0	4.40	5.03
Jupiter	E	2031-10-19T10:41:13.277	26.90	-26.75	71491.9	6.58	7.51