

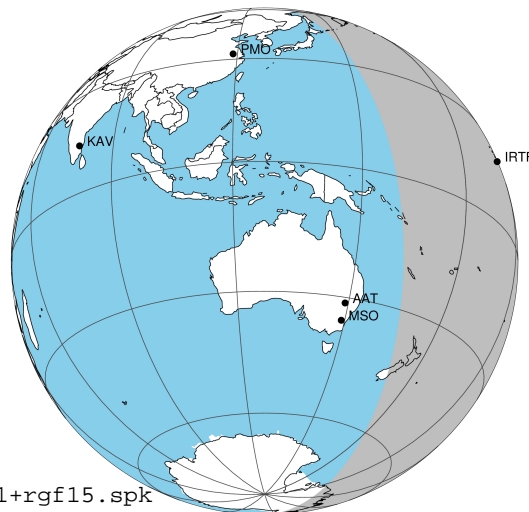
target : Jupiter  
 target radius (km) : 71492.00  
 C/A epoch : 2031-10-22T07:08:55.660  
 Event type : Pgt  
 : Jupiter occs: geocentric, topocentric  
 : Not a ringed target  
 Gaia source ID : 4116527077318050944  
 2Mass ID (if available) : 17381126-2312496

Jupiter 2031-10-22T07:08:55 K9.91 G13.99 Pgt

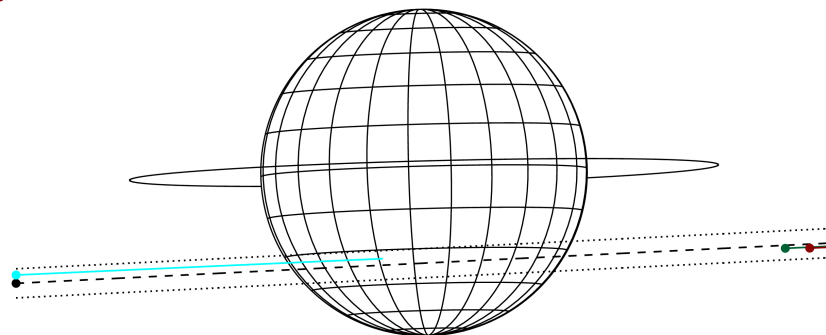
ICRS Star Coord at Epoch: 17h 38m 11.24840s -23:12:49.80767s

RUWE (>1.4 is poor) : 4.87  
 K magnitude : 9.910  
 G magnitude : 13.993  
 RP magnitude : 12.880  
 BP magnitude : 15.237  
 DUPflag : 0  
 Distance (au) : 5.715  
 f0 (km) : 0.00  
 g0 (km) : 0.00  
 skyplane vel. (km/s) : 29.52  
 Sun-Target sep (deg) : 56.75  
 Sun-Moon sep (deg) : 20.23  
 B (ring opening deg) : -2.25  
 PA of pole (deg) : 1.51  
 Pole direction: RA (deg): 268.05681  
 Dec (deg): 64.49652  
 C/A sky separation (") : 9.570  
 C/A sky separation (km) : 39664.3  
 NAIF SPICE kernels : RAJobs\_U111+rgf15.spk

Jupiter 2031-10-22T07:08:55 K9.91 G13.99  
 Pgt



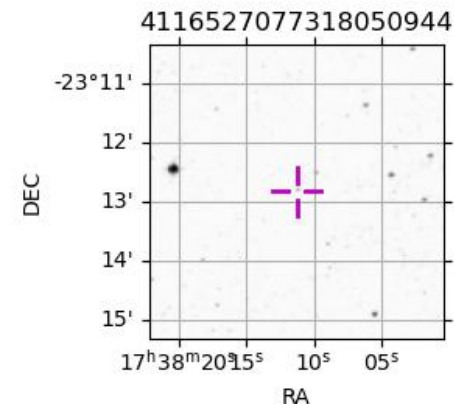
Earth  
 IRTF  
 AAT  
 MSO



2031-10-22T07:08:55.6600 az: 17.38 11.2484 δ: -23 12 49.808 C/A 9.578" PA 2.83 deg v\_sky +29.52 km/s D 05.71 AU  
 Credit: Styled after SORA/Lucky Star

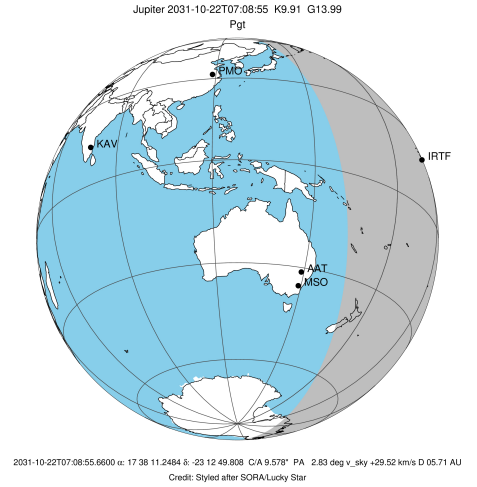
Observable events with sun below -5 deg and altitude above 5 deg

Obs	Location	lat	Elon	Target	Observed Events Interval	OEncode
PIC	Pic du Midi	42.9	0.1			Pnn
PAL	Palomar Mt (200")	33.4	243.1			Pnn
PMO	Purple Mtn Obs. Nanking	32.1	118.8			Pnn
KPNO	Kitt Peak Natl Obs	32.0	248.4			Pnn
MCD	McDonald Obs. 2.7m	30.7	256.0			Pnn
TEN	Teide Obs./Tenerife	28.3	343.5			Pnn
IRTF	Mauna Kea/IRTF	19.8	204.5			Pin
KAV	Kavalur Observatory	12.6	78.8	+	OCT 22 06:37 - OCT 22 06:37	Pnn
RIO	Rio de Janeiro	-22.9	316.8			Pnn
ESO	European Southern Obs. (3.6m)	-29.3	289.3			Pnn
AAT	Siding Spring (AAT)	-31.3	149.1			Pnn
SAAO	So. Afr. Astro. Obs. (Sutherland)	-32.4	20.8			Pnn
MSO	Mt. Stromlo Observatory	-35.3	149.0			Pnn

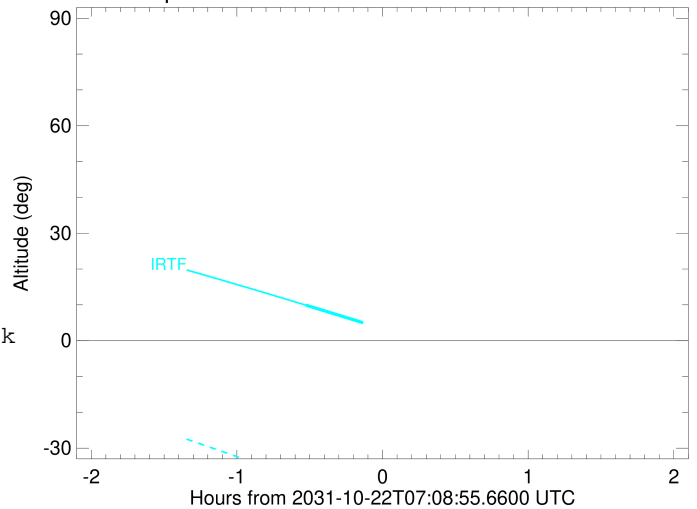


```

target                : Jupiter
target radius (km)   : 71492.00
C/A epoch             : 2031-10-22T07:12:03.620
Event type           : Pgt
: Jupiter occs: geocentric, topocentric
: Not a ringed target
Observer code        : IRTF
Location             : Mauna Kea/IRTF
Latitude (deg)       : 19.82622
E. Longitude (deg)   : 204.52800
Altitude (km)        : 4.168
Gaia source ID       : 4116527077318050944
2Mass ID (if available) : 17381126-2312496
ICRS Star Coord at Epoch: 17h 38m 11.24840s -23:12:49.80767s
RUWE (>1.4 is poor) : 4.87
K magnitude           : 9.910
G magnitude           : 13.993
RP magnitude          : 12.880
BP magnitude          : 15.237
DUPflag              : 0
Distance (au)         : 5.715
f0 (km)               : 0.00
g0 (km)               : 0.00
skyplane vel. (km/s) : 29.52
Sun-Target sep (deg) : 56.75
Sun-Moon sep (deg)   : 19.34
B (ring opening deg) : -2.25
PA of pole (deg)     : 1.51
Pole direction: RA (deg): 268.05681
Dec (deg): 64.49652
C/A sky separation (") : 8.910
C/A sky separation (km) : 36929.8
NAIF SPICE kernels   : RAJobs_U111+rgf15.spk
URKALLv1.spk
naif0012.tls
nep097.bsp
nep101.bsp
sat4401.bsp
de440.bsp
earth_720101_070426.bpc
jup365.bsp
urall6.bsp
IAU_SATURN_for_RINGFIT.tpc
pck00010.tpc
earth_200101_990628_predict.bpc
uranus_ringframes_rfrench20220627_v1.tf
neptune_ringframes_rfrench20220702a_v1.tf
earth_flat_IAU.spk
    
```



Jupiter 2031-10-22T07:08:55 K9.91 G13.99



x: target alt < 5.0 deg or sun > -5.0 deg

Target	I/E	UTC	alt	alt-sun	radius	lat-geo	lat-geodetic
Jupiter	I	2031-10-22T06:37:21.120	9.91	-39.05	71490.0	-32.08	-35.56
Jupiter	E	2031-10-22T07:46:40.898	-4.79x	-55.29	71490.3	-30.09	-33.46