

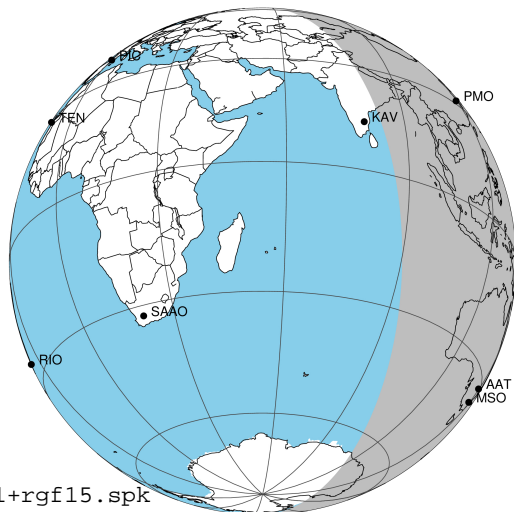
target : Jupiter
 target radius (km) : 71492.00
 C/A epoch : 2031-10-22T11:59:01.010
 Event type : Pt
 : Jupiter occs: topocentric, not geocentric
 : Not a ringed target
 Gaia source ID : 4116526390075564160
 2Mass ID (if available) : 17382041-2312287

Jupiter 2031-10-22T11:59:01 K7.99 G10.29 Pt

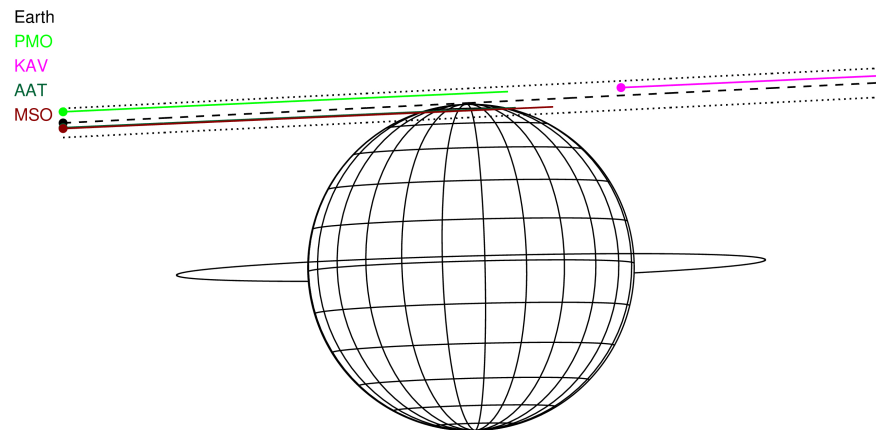
ICRS Star Coord at Epoch: 17h 38m 20.33680s -23:12:29.01476s

RUWE (>1.4 is poor) : 5.04
 K magnitude : 7.992
 G magnitude : 10.293
 RP magnitude : 8.813
 BP magnitude : 9.568
 DUPflag : 0
 Distance (au) : 5.717
 f0 (km) : 0.00
 g0 (km) : 0.00
 skyplane vel. (km/s) : 29.60
 Sun-Target sep (deg) : 56.58
 Sun-Moon sep (deg) : 23.02
 B (ring opening deg) : -2.25
 PA of pole (deg) : 1.50
 Pole direction: RA (deg): 268.05681
 Dec (deg): 64.49652
 C/A sky separation (") : 17.372
 C/A sky separation (km) : 72032.7
 NAIF SPICE kernels : RAJobs_U111+rgf15.spk

Jupiter 2031-10-22T11:59:01 K7.99 G10.29 Pt

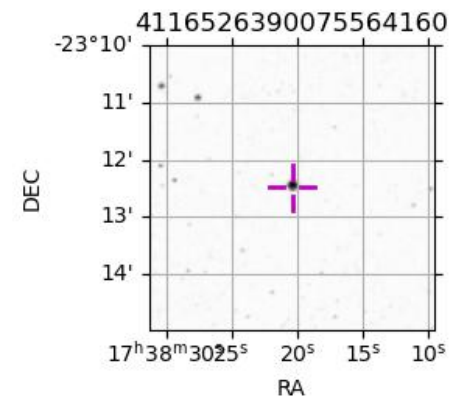


2031-10-22T11:59:01.0100 a: 17 38 20.3368 s: -23 12 29.015 C/A ***** PA 182.82 deg v_sky +29.60 km/s D 05.72 AU
 Credit: Styled after SORA/Lucky Star



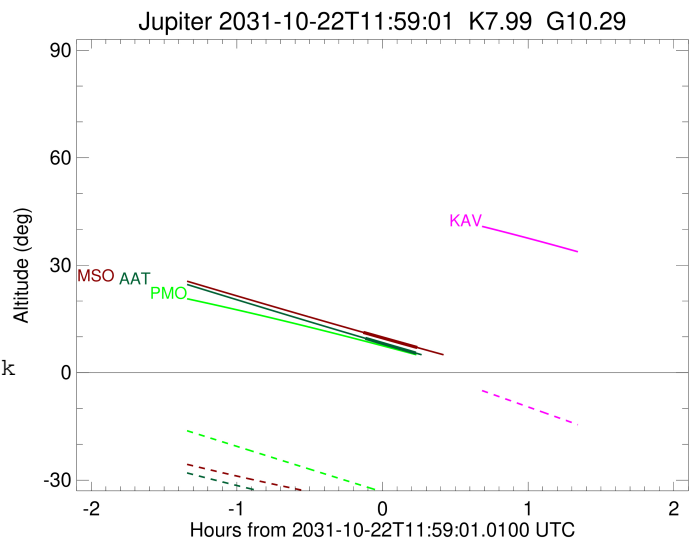
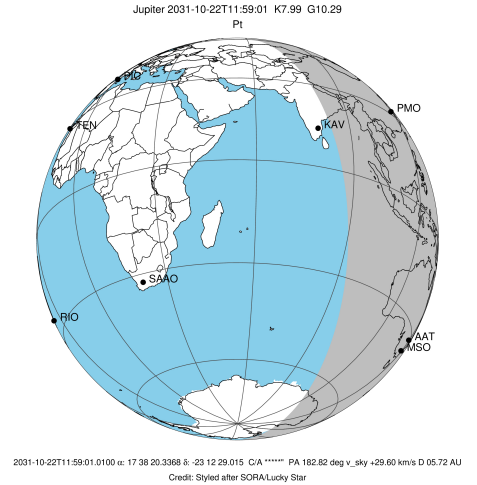
Observable events with sun below -5 deg and altitude above 5 deg

Obs	Location	lat	Elon	Target	Observed Events Interval	OCode
PIC	Pic du Midi	42.9	0.1			Pnn
PAL	Palomar Mt (200")	33.4	243.1			Pnn
PMO	Purple Mtn Obs. Nanking	32.1	118.8			Pnn
KPNO	Kitt Peak Natl Obs	32.0	248.4			Pnn
MCD	McDonald Obs. 2.7m	30.7	256.0			Pnn
TEN	Teide Obs./Tenerife	28.3	343.5			Pnn
IRTF	Mauna Kea/IRTF	19.8	204.5			Pnn
KAV	Kavalur Observatory	12.6	78.8			Pnn
RIO	Rio de Janeiro	-22.9	316.8			Pnn
ESO	European Southern Obs. (3.6m)	-29.3	289.3			Pnn
AAT	Siding Spring (AAT)	-31.3	149.1	+ +	OCT 22 11:51 - OCT 22 12:12	Pie
SAAO	So. Afr. Astro. Obs. (Sutherland)	-32.4	20.8			Pnn
MSO	Mt. Stromlo Observatory	-35.3	149.0	+ +	OCT 22 11:51 - OCT 22 12:13	Pie



```

target                : Jupiter
target radius (km)   : 71492.00
C/A epoch             : 2031-10-22T12:02:21.820
Event type            : Pt
: Jupiter occs: topocentric, not geocentric
: Not a ringed target
Observer code         : AAT
Location              : Siding Spring (AAT)
Latitude (deg)        : -31.27703
E. Longitude (deg)    : 149.06608
Altitude (km)         : 1.164
Gaia source ID        : 4116526390075564160
2Mass ID (if available) : 17382041-2312287
ICRS Star Coord at Epoch: 17h 38m 20.33680s -23:12:29.01476s
RUWE (>1.4 is poor) : 5.04
K magnitude           : 7.992
G magnitude           : 10.293
RP magnitude          : 8.813
BP magnitude          : 9.568
DUPflag              : 0
Distance (au)         : 5.717
f0 (km)               : 0.00
g0 (km)               : 0.00
skyplane vel. (km/s) : 29.60
Sun-Target sep (deg)  : 56.58
Sun-Moon sep (deg)    : 22.39
B (ring opening deg) : -2.25
PA of pole (deg)     : 1.50
Pole direction: RA (deg): 268.05681
Dec (deg): 64.49652
C/A sky separation (") : 16.655
C/A sky separation (km) : 69060.5
NAIF SPICE kernels   : RAJobs_U111+rgf15.spk
URKALLv1.spk
naif0012.tls
nep097.bsp
nep101.bsp
sat4401.bsp
de440.bsp
earth_720101_070426.bpc
jup365.bsp
urall6.bsp
IAU_SATURN_for_RINGFIT.tpc
pck00010.tpc
earth_200101_990628_predict.bpc
uranus_ringframes_rfrench20220627_v1.tf
neptune_ringframes_rfrench20220702a_v1.tf
earth_flat_IAU.spk
    
```

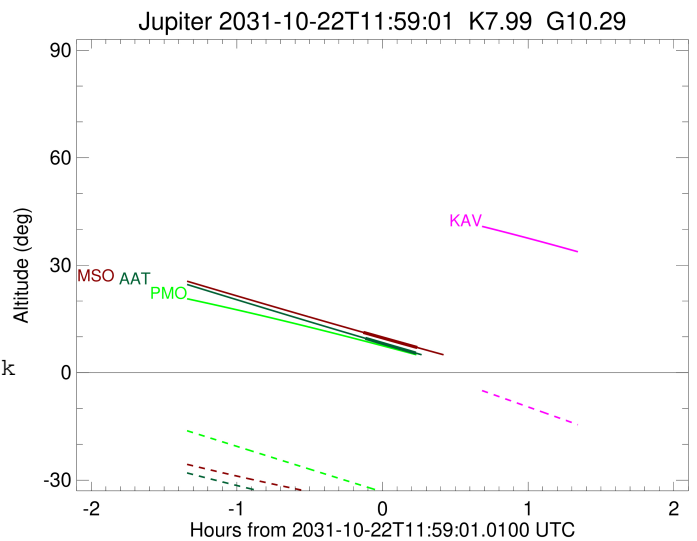
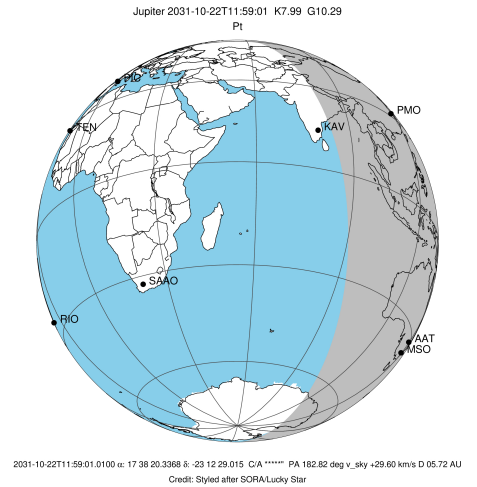


x: target alt < 5.0 deg or sun > -5.0 deg

Target	I/E	UTC	alt	alt-sun	radius	lat-geo	lat-geodetic
Jupiter	I	2031-10-22T11:51:58.461	9.58	-39.44	71485.6	73.86	75.69
Jupiter	E	2031-10-22T12:12:44.710	5.47	-42.00	71485.5	75.88	77.50

```

target                : Jupiter
target radius (km)   : 71492.00
C/A epoch             : 2031-10-22T12:02:13.450
Event type           : Pt
: Jupiter occs: topocentric, not geocentric
: Not a ringed target
Observer code        : MSO
Location             : Mt. Stromlo Observatory
Latitude (deg)       : -35.32000
E. Longitude (deg)   : 149.00833
Altitude (km)        : 0.770
Gaia source ID       : 4116526390075564160
2Mass ID (if available) : 17382041-2312287
ICRS Star Coord at Epoch: 17h 38m 20.33680s -23:12:29.01476s
RUWE (>1.4 is poor) : 5.04
K magnitude           : 7.992
G magnitude           : 10.293
RP magnitude         : 8.813
BP magnitude         : 9.568
DUPflag              : 0
Distance (au)        : 5.717
f0 (km)              : 0.00
g0 (km)              : 0.00
skyplane vel. (km/s) : 29.60
Sun-Target sep (deg) : 56.58
Sun-Moon sep (deg)   : 22.44
B (ring opening deg) : -2.25
PA of pole (deg)     : 1.50
Pole direction: RA (deg): 268.05681
Dec (deg): 64.49652
C/A sky separation (") : 16.572
C/A sky separation (km) : 68717.6
NAIF SPICE kernels   : RAJobs_U111+rgf15.spk
URKALLv1.spk
naif0012.tls
nep097.bsp
nep101.bsp
sat4401.bsp
de440.bsp
earth_720101_070426.bpc
jup365.bsp
urall6.bsp
IAU_SATURN_for_RINGFIT.tpc
pck00010.tpc
earth_200101_990628_predict.bpc
uranus_ringframes_rfrench20220627_v1.tf
neptune_ringframes_rfrench20220702a_v1.tf
earth_flat_IAU.spk
    
```



x: target alt < 5.0 deg or sun > -5.0 deg

Target	I/E	UTC	alt	alt-sun	radius	lat-geo	lat-geodetic
Jupiter	I	2031-10-22T11:51:08.244	11.24	-36.09	71485.7	72.83	74.77
Jupiter	E	2031-10-22T12:13:18.156	7.03	-38.59	71485.6	74.87	76.60