

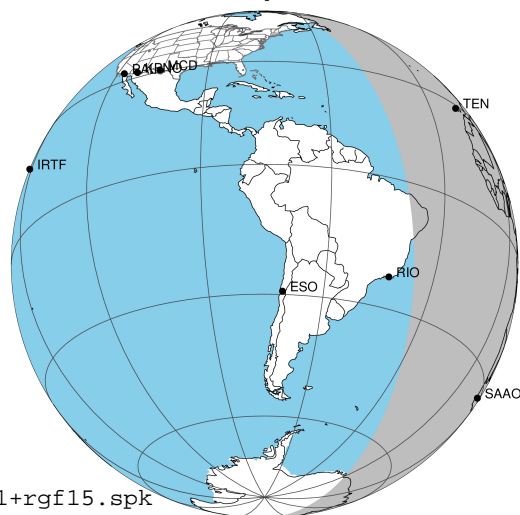
target : Jupiter
 target radius (km) : 71492.00
 C/A epoch : 2031-10-25T20:28:07.840
 Event type : Pgt
 : Jupiter occs: geocentric, topocentric
 : Not a ringed target
 Gaia source ID : 4116491480645692160
 2Mass ID (if available) : 17405256-2314407

Jupiter 2031-10-25T20:28:07 K9.40 G14.45 Pgt

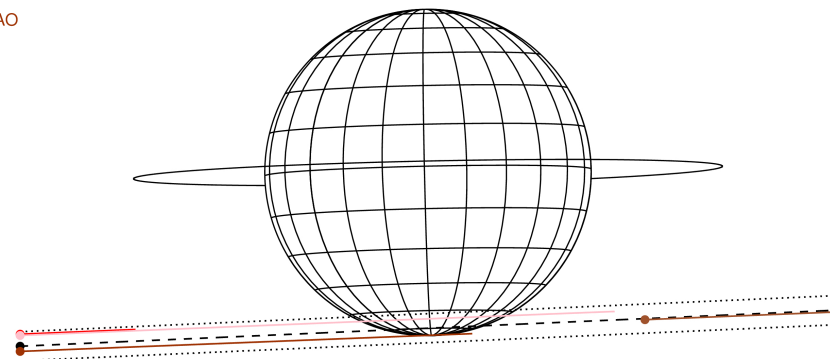
ICRS Star Coord at Epoch: 17h 40m 52.55757s -23:14:40.75334s

RUWE (>1.4 is poor) : 0.99
 K magnitude : 9.405
 G magnitude : 14.450
 RP magnitude : 13.181
 BP magnitude : 16.265
 DUPflag : 0
 Distance (au) : 5.759
 f0 (km) : 0.00
 g0 (km) : 0.00
 skyplane vel. (km/s) : 30.78
 Sun-Target sep (deg) : 53.82
 Sun-Moon sep (deg) : 69.62
 B (ring opening deg) : -2.23
 PA of pole (deg) : 1.22
 Pole direction: RA (deg): 268.05681
 Dec (deg): 64.49652
 C/A sky separation (") : 16.315
 C/A sky separation (km) : 68145.6
 NAIF SPICE kernels : RAJobs_U111+rgf15.spk

Jupiter 2031-10-25T20:28:07 K9.40 G14.45
 Pgt



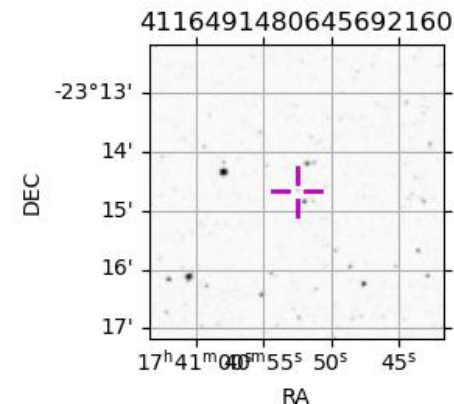
Earth
 PIC
 TEN
 RIO
 SAAO



2031-10-25T20:28:07.8400 α: 17 40 52.55756 δ: -23 14 40.753 C/A ***** PA 2.53 deg v_sky +30.78 km/s D 05.76 AU
 Credit: Styled after SORA/Lucky Star

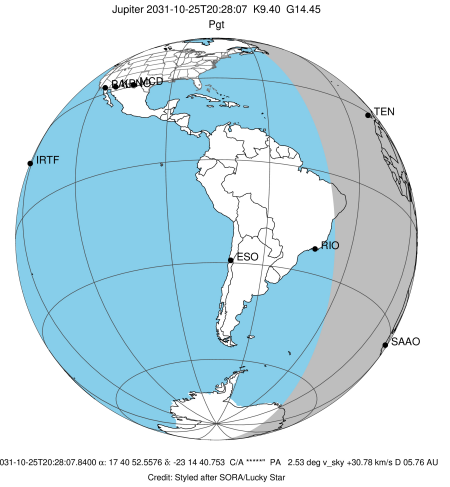
Observable events with sun below -5 deg and altitude above 5 deg

Obs	Location	lat	Elon	Target	Observed Events Interval	OEncode
PIC	Pic du Midi	42.9	0.1			Pnn
PAL	Palomar Mt (200")	33.4	243.1			Pnn
PMO	Purple Mtn Obs. Nanking	32.1	118.8			Pnn
KPNO	Kitt Peak Natl Obs	32.0	248.4			Pnn
MCD	McDonald Obs. 2.7m	30.7	256.0			Pnn
TEN	Teide Obs./Tenerife	28.3	343.5	+ +	OCT 25 20:13 - OCT 25 20:47	Pie
IRTF	Mauna Kea/IRTF	19.8	204.5			Pnn
KAV	Kavalur Observatory	12.6	78.8			Pnn
RIO	Rio de Janeiro	-22.9	316.8			Pnn
ESO	European Southern Obs. (3.6m)	-29.3	289.3			Pnn
AAT	Siding Spring (AAT)	-31.3	149.1			Pnn
SAAO	So. Afr. Astro. Obs. (Sutherland)	-32.4	20.8	+ +	OCT 25 20:28 - OCT 25 20:33	Pie
MSO	Mt. Stromlo Observatory	-35.3	149.0			Pnn

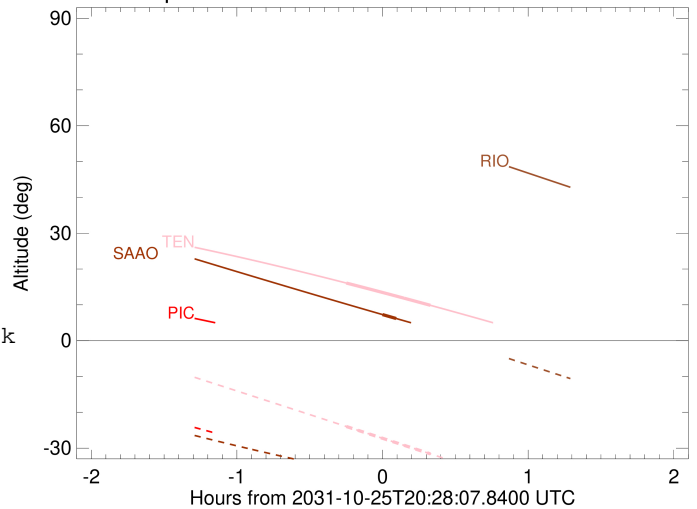


```

target                : Jupiter
target radius (km)   : 71492.00
C/A epoch            : 2031-10-25T20:30:30.970
Event type          : Pgt
                    : Jupiter occs: geocentric, topocentric
                    : Not a ringed target
Observer code       : TEN
Location            : Teide Obs./Tenerife
Latitude (deg)      : 28.30050
E. Longitude (deg)  : 343.48909
Altitude (km)       : 2.395
Gaia source ID      : 4116491480645692160
2Mass ID (if available) : 17405256-2314407
ICRS Star Coord at Epoch: 17h 40m 52.55757s -23:14:40.75334s
RUWE (>1.4 is poor) : 0.99
K magnitude          : 9.405
G magnitude          : 14.450
RP magnitude         : 13.181
BP magnitude         : 16.265
DUPflag             : 0
Distance (au)        : 5.759
f0 (km)              : 0.00
g0 (km)              : 0.00
skyplane vel. (km/s) : 30.78
Sun-Target sep (deg) : 53.82
Sun-Moon sep (deg)  : 69.56
B (ring opening deg) : -2.23
PA of pole (deg)    : 1.22
Pole direction: RA (deg): 268.05681
Dec (deg): 64.49652
C/A sky separation (" ) : 15.337
C/A sky separation (km) : 64062.2
NAIF SPICE kernels  : RAJobs_U111+rgf15.spk
URKALLv1.spk
naif0012.tls
nep097.bsp
nep101.bsp
sat4401.bsp
de440.bsp
earth_720101_070426.bpc
jup365.bsp
urall6.bsp
IAU_SATURN_for_RINGFIT.tpc
pck00010.tpc
earth_200101_990628_predict.bpc
uranus_ringframes_rfrench20220627_v1.tf
neptune_ringframes_rfrench20220702a_v1.tf
earth_flat_IAU.spk
    
```



Jupiter 2031-10-25T20:28:07 K9.40 G14.45

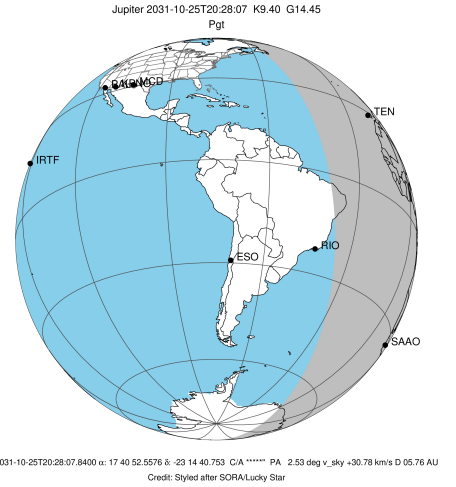


x: target alt < 5.0 deg or sun > -5.0 deg

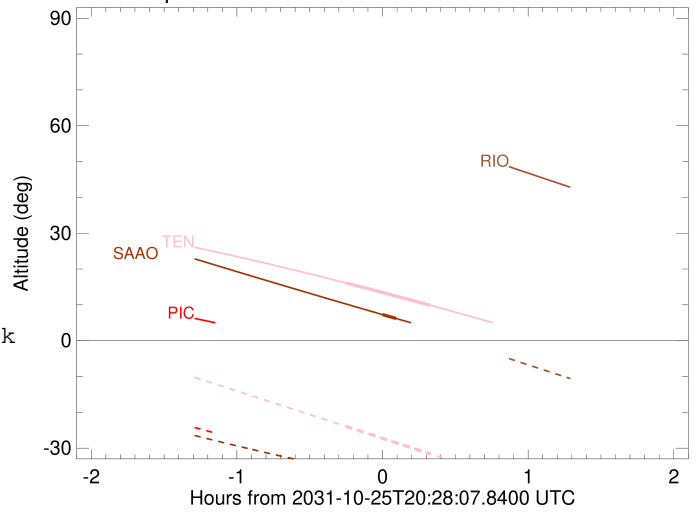
Target	I/E	UTC	alt	alt-sun	radius	lat-geo	lat-geodetic
Jupiter	I	2031-10-25T20:13:13.029	16.08	-23.95	71486.4	-64.63	-67.34
Jupiter	E	2031-10-25T20:47:47.884	9.88	-31.58	71486.6	-62.52	-65.39

```

target                : Jupiter
target radius (km)   : 71492.00
C/A epoch             : 2031-10-25T20:30:54.380
Event type            : Pgt
: Jupiter occs: geocentric, topocentric
: Not a ringed target
Observer code         : SAAO
Location              : So. Afr. Astro. Obs. (Sutherland)
Latitude (deg)        : -32.37953
E. Longitude (deg)    : 20.81070
Altitude (km)         : 1.768
Gaia source ID        : 4116491480645692160
2Mass ID (if available) : 17405256-2314407
ICRS Star Coord at Epoch: 17h 40m 52.55757s -23:14:40.75334s
RUWE (>1.4 is poor) : 0.99
K magnitude           : 9.405
G magnitude           : 14.450
RP magnitude          : 13.181
BP magnitude          : 16.265
DUPflag              : 0
Distance (au)         : 5.759
f0 (km)               : 0.00
g0 (km)               : 0.00
skyplane vel. (km/s) : 30.78
Sun-Target sep (deg) : 53.82
Sun-Moon sep (deg)   : 69.46
B (ring opening deg) : -2.23
PA of pole (deg)     : 1.22
Pole direction: RA (deg): 268.05681
Dec (deg): 64.49652
C/A sky separation (") : 17.070
C/A sky separation (km) : 71301.2
NAIF SPICE kernels   : RAJobs_U111+rgf15.spk
URKALLv1.spk
naif0012.tls
nep097.bsp
nep101.bsp
sat4401.bsp
de440.bsp
earth_720101_070426.bpc
jup365.bsp
urall6.bsp
IAU_SATURN_for_RINGFIT.tpc
pck00010.tpc
earth_200101_990628_predict.bpc
uranus_ringframes_rfrench20220627_v1.tf
neptune_ringframes_rfrench20220702a_v1.tf
earth_flat_IAU.spk
    
```



Jupiter 2031-10-25T20:28:07 K9.40 G14.45



x: target alt < 5.0 deg or sun > -5.0 deg

Target	I/E	UTC	alt	alt-sun	radius	lat-geo	lat-geodetic
Jupiter	I	2031-10-25T20:28:08.102	7.28	-38.02	71485.2	-86.18	-86.63
Jupiter	E	2031-10-25T20:33:40.649	6.20	-38.69	71485.2	-84.41	-85.06