

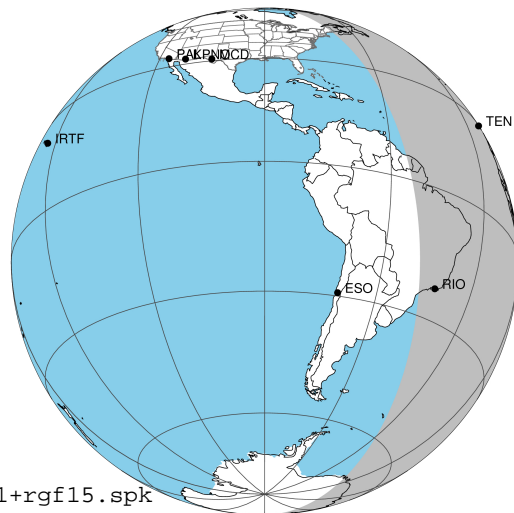
target : Jupiter
 target radius (km) : 71492.00
 C/A epoch : 2031-10-27T21:20:13.840
 Event type : Pgt
 : Jupiter occs: geocentric, topocentric
 : Not a ringed target
 Gaia source ID : 4116481825556979840
 2Mass ID (if available) : 17422740-2315369

Jupiter 2031-10-27T21:20:13 K9.71 G13.39 Pgt

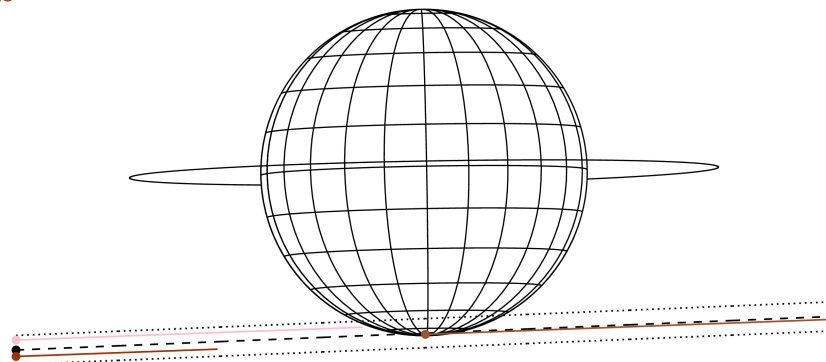
ICRS Star Coord at Epoch: 17h 42m 27.41513s -23:15:37.06016s

RUWE (>1.4 is poor) : 0.86
 K magnitude : 9.710
 G magnitude : 13.390
 RP magnitude : 12.350
 BP magnitude : 14.504
 DUPflag : 0
 Distance (au) : 5.784
 f0 (km) : 0.00
 g0 (km) : 0.00
 skyplane vel. (km/s) : 31.48
 Sun-Target sep (deg) : 52.16
 Sun-Moon sep (deg) : 97.53
 B (ring opening deg) : -2.22
 PA of pole (deg) : 1.05
 Pole direction: RA (deg): 268.05681
 Dec (deg): 64.49652
 C/A sky separation (") : 16.770
 C/A sky separation (km) : 70346.6
 NAIF SPICE kernels : RAJobs_U111+rgf15.spk

Jupiter 2031-10-27T21:20:13 K9.71 G13.39
 Pgt



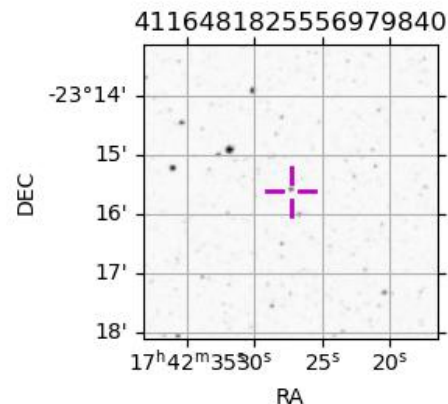
Earth
 TEN
 RIO
 SAAO



2031-10-27T21:20:13.8400 α: 17 42 27.4151 δ: -23 15 37.060 C/A ***** PA 2.36 deg v_sky +31.48 km/s D 05.78 AU
 Credit: Styled after SORA/Lucky Star

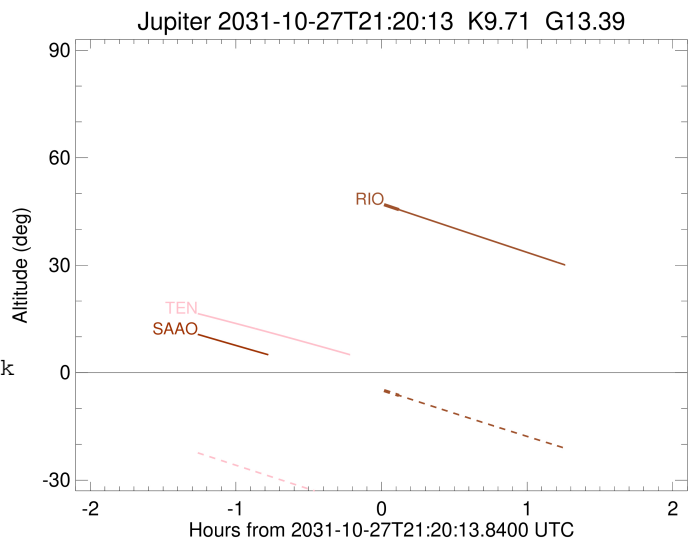
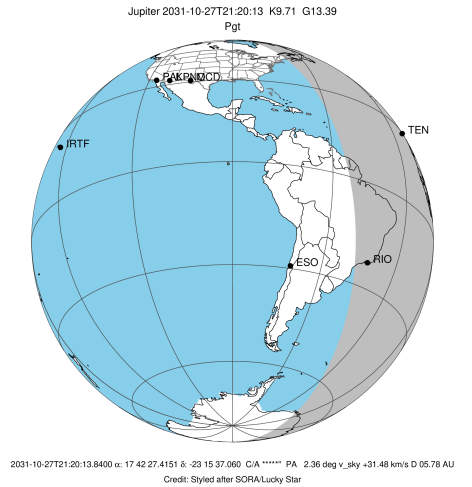
Observable events with sun below -5 deg and altitude above 5 deg

Obs	Location	lat	Elon	Target	Observed Events Interval	OCode
PIC	Pic du Midi	42.9	0.1			Pnn
PAL	Palomar Mt (200")	33.4	243.1			Pnn
PMO	Purple Mtn Obs. Nanking	32.1	118.8			Pnn
KPNO	Kitt Peak Natl Obs	32.0	248.4			Pnn
MCD	McDonald Obs. 2.7m	30.7	256.0			Pnn
TENO	Teide Obs./Tenerife	28.3	343.5			Pnn
IRTF	Mauna Kea/IRTF	19.8	204.5			Pnn
KAV	Kavalur Observatory	12.6	78.8			Pnn
RIO	Rio de Janeiro	-22.9	316.8	+	OCT 27 21:27 - OCT 27 21:27	Pne
ESO	European Southern Obs. (3.6m)	-29.3	289.3			Pnn
AAT	Siding Spring (AAT)	-31.3	149.1			Pnn
SAAO	So. Afr. Astro. Obs. (Sutherland)	-32.4	20.8			Pnn
MSO	Mt. Stromlo Observatory	-35.3	149.0			Pnn



```

target                : Jupiter
target radius (km)    : 71492.00
C/A epoch              : 2031-10-27T21:22:23.650
Event type             : Pgt
: Jupiter occs: geocentric, topocentric
: Not a ringed target
Observer code         : RIO
Location              : Rio de Janeiro
Latitude (deg)        : -22.89506
E. Longitude (deg)    : 316.77708
Altitude (km)         : 0.033
Gaia source ID        : 4116481825556979840
2Mass ID (if available) : 17422740-2315369
ICRS Star Coord at Epoch: 17h 42m 27.41513s -23:15:37.06016s
RUWE (>1.4 is poor)  : 0.86
K magnitude           : 9.710
G magnitude           : 13.390
RP magnitude          : 12.350
BP magnitude          : 14.504
DUPflag              : 0
Distance (au)         : 5.784
f0 (km)               : 0.00
g0 (km)               : 0.00
skyplane vel. (km/s) : 31.48
Sun-Target sep (deg)  : 52.16
Sun-Moon sep (deg)   : 98.33
B (ring opening deg) : -2.22
PA of pole (deg)     : 1.05
Pole direction: RA (deg): 268.05681
Dec (deg): 64.49652
C/A sky separation (") : 16.895
C/A sky separation (km) : 70874.5
NAIF SPICE kernels   : RAJobs_U111+rgf15.spk
URKALLv1.spk
naif0012.tls
nep097.bsp
nep101.bsp
sat4401.bsp
de440.bsp
earth_720101_070426.bpc
jup365.bsp
urall6.bsp
IAU_SATURN_for_RINGFIT.tpc
pck00010.tpc
earth_200101_990628_predict.bpc
uranus_ringframes_rfrench20220627_v1.tf
neptune_ringframes_rfrench20220702a_v1.tf
earth_flat_IAU.spk
    
```



x: target alt < 5.0 deg or sun > -5.0 deg

Target	I/E	UTC	alt	alt-sun	radius	lat-geo	lat-geodetic
Jupiter	I	2031-10-27T21:17:24.722	47.77	-4.14x	71485.3	-83.23	-84.02
Jupiter	E	2031-10-27T21:27:22.528	45.51	-6.34	71485.4	-81.13	-82.17