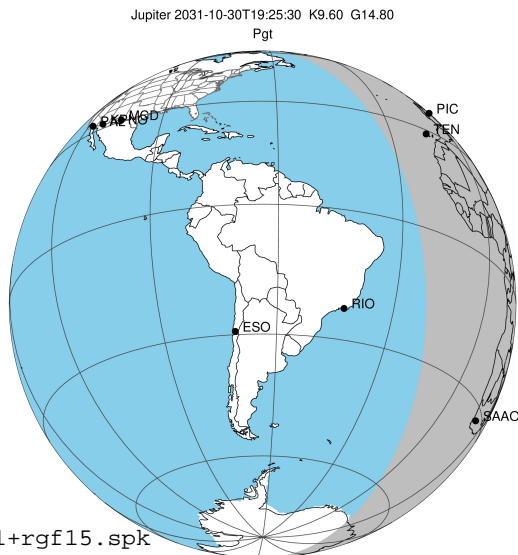


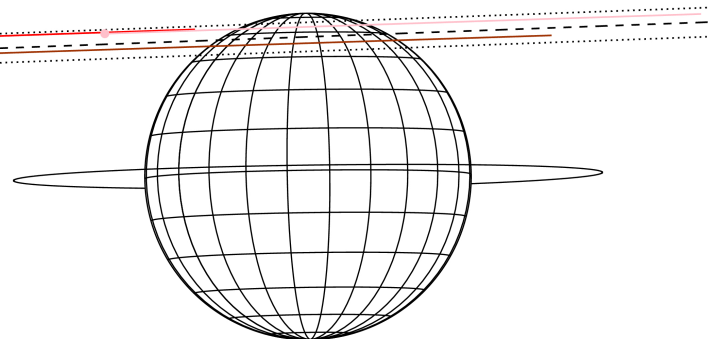
target : Jupiter
 target radius (km) : 71492.00
 C/A epoch : 2031-10-30T19:25:30.540
 Event type : Pgt
 : Jupiter occs: geocentric, topocentric
 : Not a ringed target
 Gaia source ID : 4068806378463146496
 2Mass ID (if available) : 17444652-2316202

Jupiter 2031-10-30T19:25:30 K9.60 G14.80 Pgt

ICRS Star Coord at Epoch: 17h 44m 46.52686s -23:16:20.50542s
 RUWE (>1.4 is poor) : 1.08
 K magnitude : 9.603
 G magnitude : 14.797
 RP magnitude : 13.443
 BP magnitude : 16.823
 DUPflag : 0
 Distance (au) : 5.818
 f0 (km) : 0.00
 g0 (km) : 0.00
 skyplane vel. (km/s) : 32.45
 Sun-Target sep (deg) : 49.78
 Sun-Moon sep (deg) : 136.20
 B (ring opening deg) : -2.22
 PA of pole (deg) : 0.80
 Pole direction: RA (deg): 268.05681
 Dec (deg): 64.49652
 C/A sky separation (") : 14.486
 C/A sky separation (km) : 61129.3
 NAIF SPICE kernels : RAJobs_U111+rgf15.spk



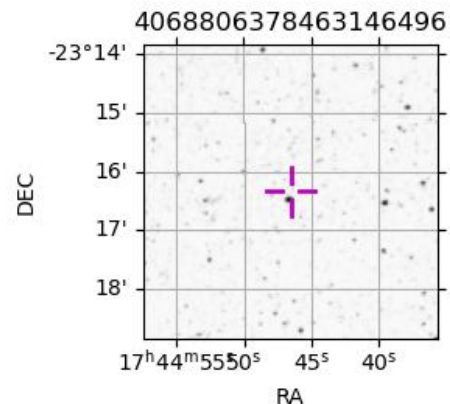
Earth
 PIC
 TEN
 SAAO



2031-10-30T19:25:30.5400 a: 17 44 46.52686 s: -23 16 20.505 C/A ***** PA 182.11 deg v_sky +32.45 km/s D 05.82 AU
 Credit: Styled after SORA/Lucky Star

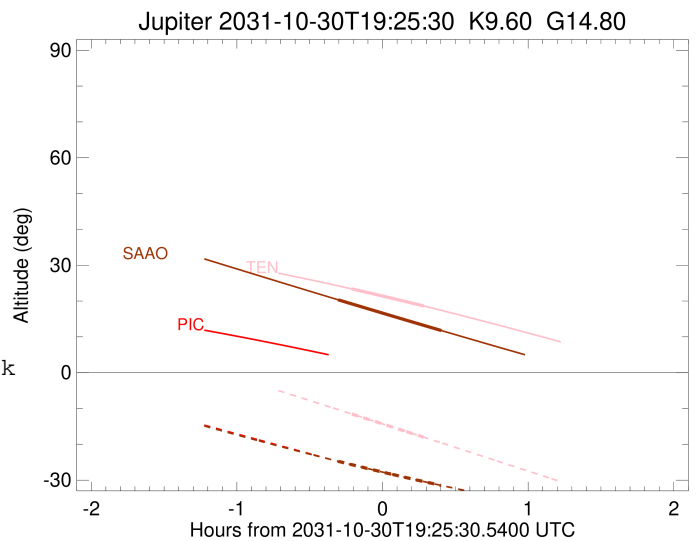
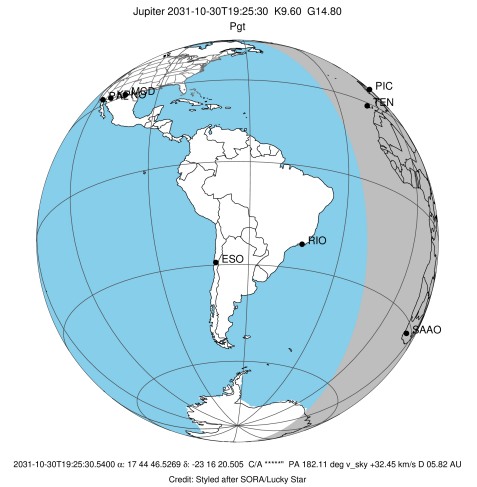
Observable events with sun below -5 deg and altitude above 5 deg

Obs	Location	lat	Elon	Target	Observed Events Interval	OCode
PIC	Pic du Midi	42.9	0.1			Pnn
PAL	Palomar Mt (200")	33.4	243.1			Pnn
PMO	Purple Mtn Obs. Nanking	32.1	118.8			Pnn
KPNO	Kitt Peak Natl Obs	32.0	248.4			Pnn
MCD	McDonald Obs. 2.7m	30.7	256.0			Pnn
TEN	Teide Obs./Tenerife	28.3	343.5	+ +	OCT 30 19:12 - OCT 30 19:42	Pie
IRTF	Mauna Kea/IRTF	19.8	204.5			Pnn
KAV	Kavalur Observatory	12.6	78.8			Pnn
RIO	Rio de Janeiro	-22.9	316.8			Pnn
ESO	European Southern Obs. (3.6m)	-29.3	289.3			Pnn
AAT	Siding Spring (AAT)	-31.3	149.1			Pnn
SAAO	So. Afr. Astro. Obs. (Sutherland)	-32.4	20.8	+ +	OCT 30 19:07 - OCT 30 19:49	Pie
MSO	Mt. Stromlo Observatory	-35.3	149.0			Pnn



```

target                : Jupiter
target radius (km)   : 71492.00
C/A epoch            : 2031-10-30T19:27:41.090
Event type          : Pgt
                    : Jupiter occs: geocentric, topocentric
                    : Not a ringed target
Observer code       : TEN
Location            : Teide Obs./Tenerife
Latitude (deg)      : 28.30050
E. Longitude (deg)  : 343.48909
Altitude (km)       : 2.395
Gaia source ID      : 4068806378463146496
2Mass ID (if available) : 17444652-2316202
ICRS Star Coord at Epoch: 17h 44m 46.52686s -23:16:20.50542s
RUWE (>1.4 is poor) : 1.08
K magnitude          : 9.603
G magnitude          : 14.797
RP magnitude         : 13.443
BP magnitude         : 16.823
DUPflag             : 0
Distance (au)       : 5.818
f0 (km)              : 0.00
g0 (km)              : 0.00
skyplane vel. (km/s) : 32.45
Sun-Target sep (deg) : 49.78
Sun-Moon sep (deg)  : 136.87
B (ring opening deg) : -2.22
PA of pole (deg)    : 0.80
Pole direction: RA (deg): 268.05681
Dec (deg): 64.49652
C/A sky separation (" ) : 15.527
C/A sky separation (km) : 65524.0
NAIF SPICE kernels  : RAJobs_U111+rgf15.spk
URKALLv1.spk
naif0012.tls
nep097.bsp
nep101.bsp
sat4401.bsp
de440.bsp
earth_720101_070426.bpc
jup365.bsp
urall6.bsp
IAU_SATURN_for_RINGFIT.tpc
pck00010.tpc
earth_200101_990628_predict.bpc
uranus_ringframes_rfrench20220627_v1.tf
neptune_ringframes_rfrench20220702a_v1.tf
earth_flat_IAU.spk
    
```

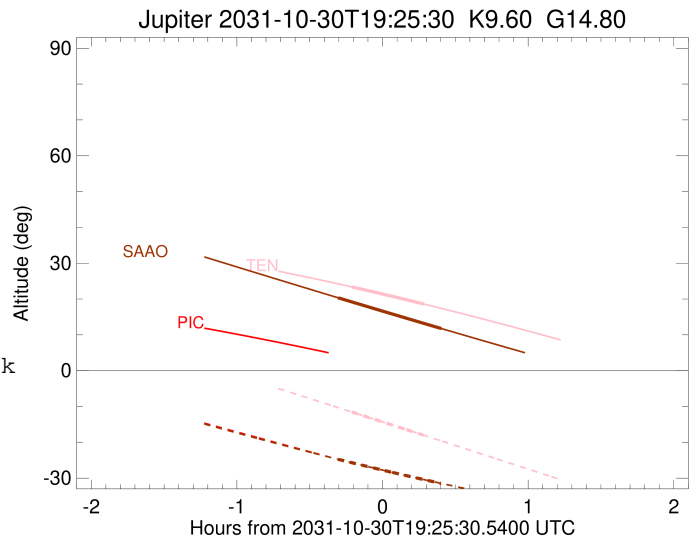
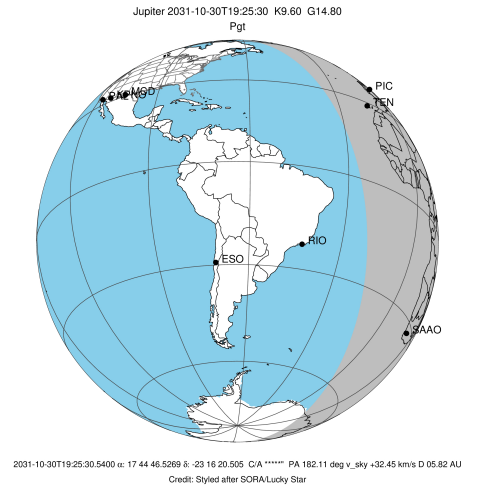


x: target alt < 5.0 deg or sun > -5.0 deg

Target	I/E	UTC	alt	alt-sun	radius	lat-geo	lat-geodetic
Jupiter	I	2031-10-30T19:12:52.201	23.37	-11.54	71486.5	65.22	67.88
Jupiter	E	2031-10-30T19:42:29.317	18.61	-18.01	71486.3	67.43	69.89

```

target                : Jupiter
target radius (km)   : 71492.00
C/A epoch            : 2031-10-30T19:28:27.580
Event type          : Pgt
                    : Jupiter occs: geocentric, topocentric
                    : Not a ringed target
Observer code       : SAAO
Location            : So. Afr. Astro. Obs. (Sutherland)
Latitude (deg)      : -32.37953
E. Longitude (deg)  : 20.81070
Altitude (km)       : 1.768
Gaia source ID      : 4068806378463146496
2Mass ID (if available) : 17444652-2316202
ICRS Star Coord at Epoch: 17h 44m 46.52686s -23:16:20.50542s
RUWE (>1.4 is poor) : 1.08
K magnitude          : 9.603
G magnitude          : 14.797
RP magnitude         : 13.443
BP magnitude         : 16.823
DUPflag             : 0
Distance (au)       : 5.818
f0 (km)              : 0.00
g0 (km)              : 0.00
skyplane vel. (km/s) : 32.45
Sun-Target sep (deg) : 49.78
Sun-Moon sep (deg)  : 136.97
B (ring opening deg) : -2.22
PA of pole (deg)    : 0.80
Pole direction: RA (deg): 268.05681
Dec (deg): 64.49652
C/A sky separation ("): 13.832
C/A sky separation (km): 58370.1
NAIF SPICE kernels  : RAJobs_U111+rgf15.spk
URKALLv1.spk
naif0012.tls
nep097.bsp
nep101.bsp
sat4401.bsp
de440.bsp
earth_720101_070426.bpc
jup365.bsp
urall6.bsp
IAU_SATURN_for_RINGFIT.tpc
pck00010.tpc
earth_200101_990628_predict.bpc
uranus_ringframes_rfrench20220627_v1.tf
neptune_ringframes_rfrench20220702a_v1.tf
earth_flat_IAU.spk
    
```



x: target alt < 5.0 deg or sun > -5.0 deg

Target	I/E	UTC	alt	alt-sun	radius	lat-geo	lat-geodetic
Jupiter	I	2031-10-30T19:07:13.508	20.34	-24.74	71487.6	53.64	57.08
Jupiter	E	2031-10-30T19:49:39.971	11.78	-31.46	71487.4	55.71	59.04