

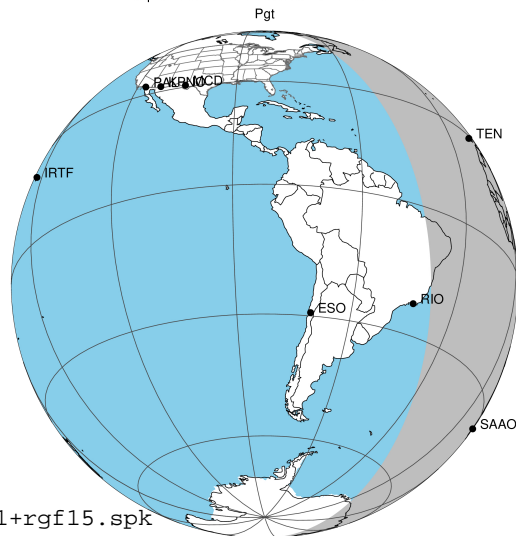
target : Jupiter
 target radius (km) : 71492.00
 C/A epoch : 2031-10-31T20:38:38.520
 Event type : Pgt
 : Jupiter occs: geocentric, topocentric
 : Not a ringed target
 Gaia source ID : 4068804007641060992
 2Mass ID (if available) : 17453741-2316539

Jupiter 2031-10-31T20:38:38 K8.97 G14.75 Pgt

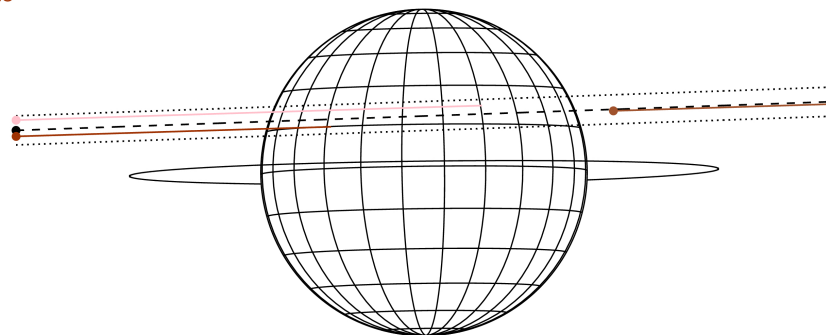
ICRS Star Coord at Epoch: 17h 45m 37.35723s -23:16:54.33533s

RUWE (>1.4 is poor) : 1.00
 K magnitude : 8.969
 G magnitude : 14.747
 RP magnitude : 13.054
 BP magnitude : 16.698
 DUPflag : 0
 Distance (au) : 5.830
 f0 (km) : 0.00
 g0 (km) : 0.00
 skyplane vel. (km/s) : 32.79
 Sun-Target sep (deg) : 48.92
 Sun-Moon sep (deg) : 149.54
 B (ring opening deg) : -2.21
 PA of pole (deg) : 0.71
 Pole direction: RA (deg): 268.05680
 Dec (deg): 64.49652
 C/A sky separation (") : 5.846
 C/A sky separation (km) : 24722.7
 NAIF SPICE kernels : RAJobs_U111+rgf15.spk

Jupiter 2031-10-31T20:38:38 K8.97 G14.75
 Pgt



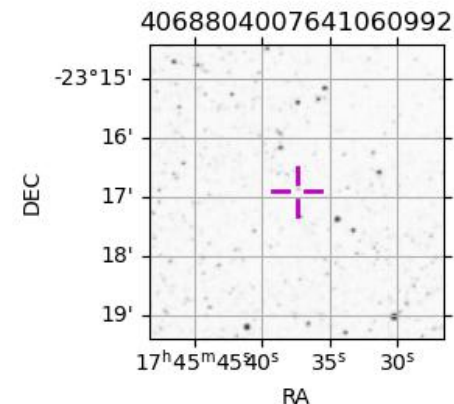
Earth
 TEN
 RIO
 SAAO



2031-10-31T20:38:38.5200 ex: 17 45 37.3572 s: -23 16 54.335 C/A 5.838° PA 182.01 deg v_sky +32.79 km/s D 05.83 AU
 Credit: Styled after SORA/Lucky Star

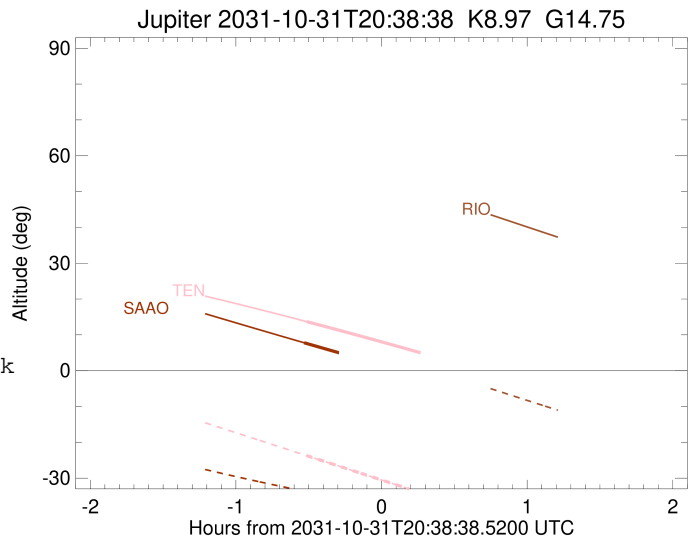
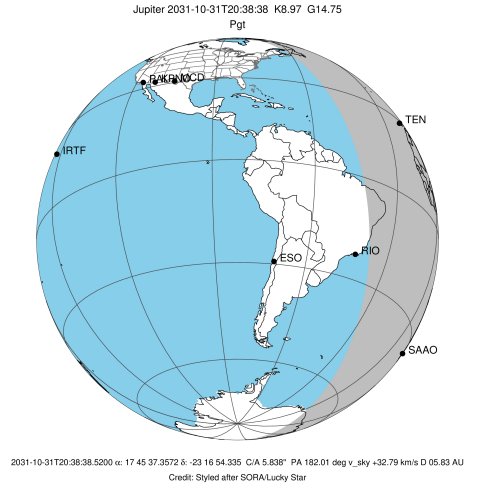
Observable events with sun below -5 deg and altitude above 5 deg

Obs	Location	lat	Elon	Target	Observed Events Interval	OCode
PIC	Pic du Midi	42.9	0.1			Pnn
PAL	Palomar Mt (200")	33.4	243.1			Pnn
PMO	Purple Mtn Obs. Nanking	32.1	118.8			Pnn
KPNO	Kitt Peak Natl Obs	32.0	248.4			Pnn
MCD	McDonald Obs. 2.7m	30.7	256.0			Pnn
TEN	Teide Obs./Tenerife	28.3	343.5	+	OCT 31 20:07 - OCT 31 20:07	Pin
IRTF	Mauna Kea/IRTF	19.8	204.5			Pnn
KAV	Kavalur Observatory	12.6	78.8			Pnn
RIO	Rio de Janeiro	-22.9	316.8			Pnn
ESO	European Southern Obs. (3.6m)	-29.3	289.3			Pnn
AAT	Siding Spring (AAT)	-31.3	149.1			Pnn
SAAO	So. Afr. Astro. Obs. (Sutherland)	-32.4	20.8	+	OCT 31 20:06 - OCT 31 20:06	Pin
MSO	Mt. Stromlo Observatory	-35.3	149.0			Pnn



```

target                : Jupiter
target radius (km)   : 71492.00
C/A epoch            : 2031-10-31T20:41:16.450
Event type           : Pgt
: Jupiter occs: geocentric, topocentric
: Not a ringed target
Observer code        : TEN
Location             : Teide Obs./Tenerife
Latitude (deg)       : 28.30050
E. Longitude (deg)   : 343.48909
Altitude (km)        : 2.395
Gaia source ID       : 4068804007641060992
2Mass ID (if available) : 17453741-2316539
ICRS Star Coord at Epoch: 17h 45m 37.35723s -23:16:54.33533s
RUWE (>1.4 is poor) : 1.00
K magnitude           : 8.969
G magnitude           : 14.747
RP magnitude         : 13.054
BP magnitude         : 16.698
DUPflag              : 0
Distance (au)        : 5.830
f0 (km)              : 0.00
g0 (km)              : 0.00
skyplane vel. (km/s) : 32.79
Sun-Target sep (deg) : 48.92
Sun-Moon sep (deg)   : 150.23
B (ring opening deg) : -2.21
PA of pole (deg)     : 0.71
Pole direction: RA (deg): 268.05680
Dec (deg): 64.49652
C/A sky separation ("): 6.744
C/A sky separation (km): 28519.1
NAIF SPICE kernels   : RAJobs_U111+rgf15.spk
URKALLv1.spk
naif0012.tls
nep097.bsp
nep101.bsp
sat4401.bsp
de440.bsp
earth_720101_070426.bpc
jup365.bsp
urall6.bsp
IAU_SATURN_for_RINGFIT.tpc
pck00010.tpc
earth_200101_990628_predict.bpc
uranus_ringframes_rfrench20220627_v1.tf
neptune_ringframes_rfrench20220702a_v1.tf
earth_flat_IAU.spk
    
```

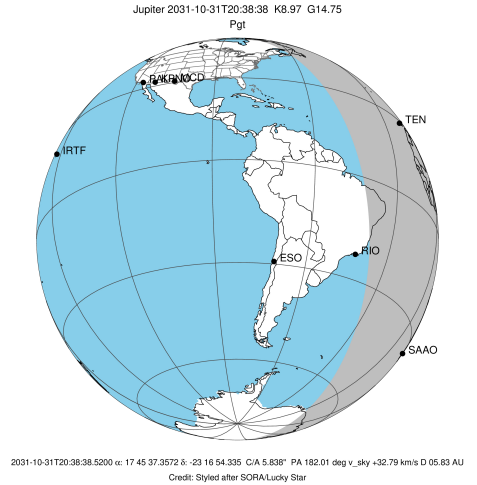


x: target alt < 5.0 deg or sun > -5.0 deg

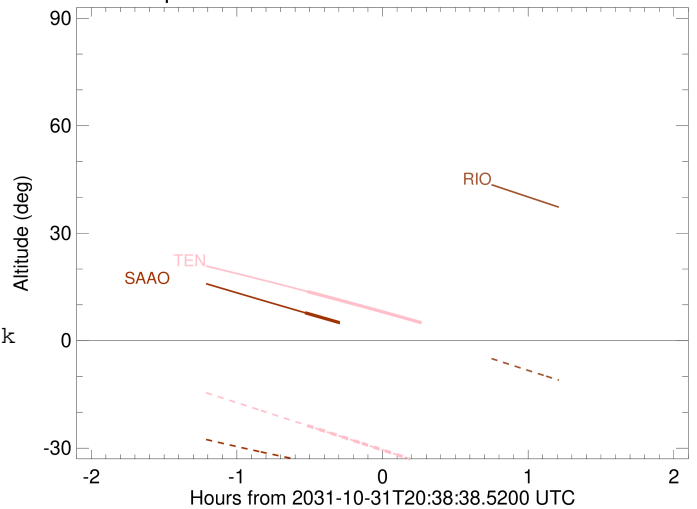
Target	I/E	UTC	alt	alt-sun	radius	lat-geo	lat-geodetic
Jupiter	I	2031-10-31T20:07:45.216	13.70	-23.70	71491.0	22.43	25.24
Jupiter	E	2031-10-31T21:14:43.721	1.12x	-38.46	71490.8	24.53	27.52

```

target                : Jupiter
target radius (km)   : 71492.00
C/A epoch            : 2031-10-31T20:41:24.410
Event type           : Pgt
: Jupiter occs: geocentric, topocentric
: Not a ringed target
Observer code        : SAAO
Location             : So. Afr. Astro. Obs. (Sutherland)
Latitude (deg)       : -32.37953
E. Longitude (deg)   : 20.81070
Altitude (km)        : 1.768
Gaia source ID       : 4068804007641060992
2Mass ID (if available) : 17453741-2316539
ICRS Star Coord at Epoch: 17h 45m 37.35723s -23:16:54.33533s
RUWE (>1.4 is poor) : 1.00
K magnitude           : 8.969
G magnitude           : 14.747
RP magnitude          : 13.054
BP magnitude          : 16.698
DUPflag              : 0
Distance (au)         : 5.830
f0 (km)               : 0.00
g0 (km)               : 0.00
skyplane vel. (km/s) : 32.79
Sun-Target sep (deg)  : 48.92
Sun-Moon sep (deg)   : 150.24
B (ring opening deg) : -2.21
PA of pole (deg)     : 0.71
Pole direction: RA (deg): 268.05680
Dec (deg): 64.49652
C/A sky separation (") : 5.024
C/A sky separation (km) : 21246.4
NAIF SPICE kernels   : RAJobs_U111+rgf15.spk
URKALLv1.spk
naif0012.tls
nep097.bsp
nep101.bsp
sat4401.bsp
de440.bsp
earth_720101_070426.bpc
jup365.bsp
urall6.bsp
IAU_SATURN_for_RINGFIT.tpc
pck00010.tpc
earth_200101_990628_predict.bpc
uranus_ringframes_rfrench20220627_v1.tf
neptune_ringframes_rfrench20220702a_v1.tf
earth_flat_IAU.spk
    
```



Jupiter 2031-10-31T20:38:38 K8.97 G14.75



x: target alt < 5.0 deg or sun > -5.0 deg

Target	I/E	UTC	alt	alt-sun	radius	lat-geo	lat-geodetic
Jupiter	I	2031-10-31T20:06:46.630	7.79	-33.62	71491.5	16.24	18.41
Jupiter	E	2031-10-31T21:15:57.926	-5.25x	-41.05	71491.3	18.31	20.71