

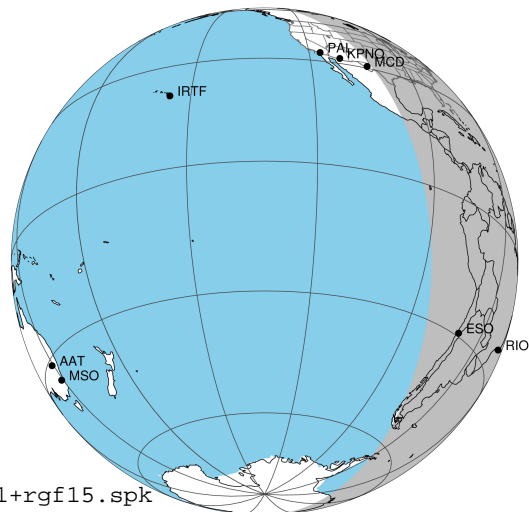
target : Jupiter
 target radius (km) : 71492.00
 C/A epoch : 2031-10-31T23:55:30.190
 Event type : Pgt
 : Jupiter occs: geocentric, topocentric
 : Not a ringed target
 Gaia source ID : 4068803977670475392
 2Mass ID (if available) : 17454399-2316590

Jupiter 2031-10-31T23:55:30 K8.74 G14.08 Pgt

ICRS Star Coord at Epoch: 17h 45m 44.00076s -23:16:59.14018s

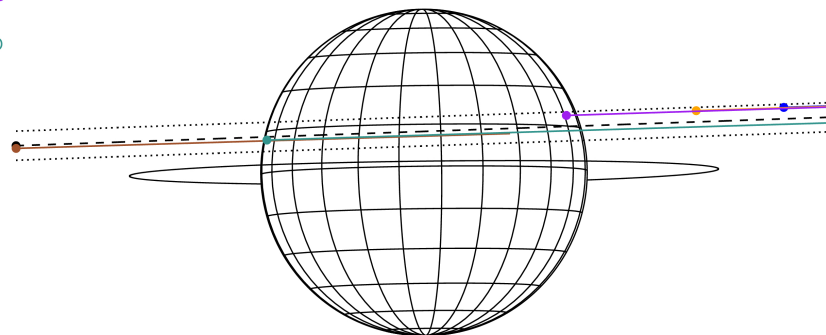
RUWE (>1.4 is poor) : 1.02
 K magnitude : 8.741
 G magnitude : 14.078
 RP magnitude : 12.728
 BP magnitude : 16.272
 DUPflag : 0
 Distance (au) : 5.832
 f0 (km) : 0.00
 g0 (km) : 0.00
 skyplane vel. (km/s) : 32.84
 Sun-Target sep (deg) : 48.81
 Sun-Moon sep (deg) : 151.25
 B (ring opening deg) : -2.21
 PA of pole (deg) : 0.70
 Pole direction: RA (deg): 268.05680
 Dec (deg): 64.49652
 C/A sky separation (") : 4.251
 C/A sky separation (km) : 17980.2
 NAIF SPICE kernels : RAJobs_U111+rgf15.spk

Jupiter 2031-10-31T23:55:30 K8.74 G14.08 Pgt



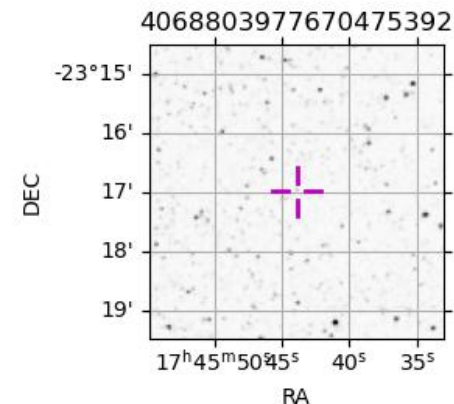
2031-10-31T23:55:30.1900 cc: 17 45 44.0008 s: -23 16 59.140 C/A 4.243" PA 182.00 deg v_sky +32.84 km/s D 05.83 AU
 Credit: Styled after SORA/Lucky Star

Earth
 PAL
 KPNO
 MCD
 RIO
 ESO



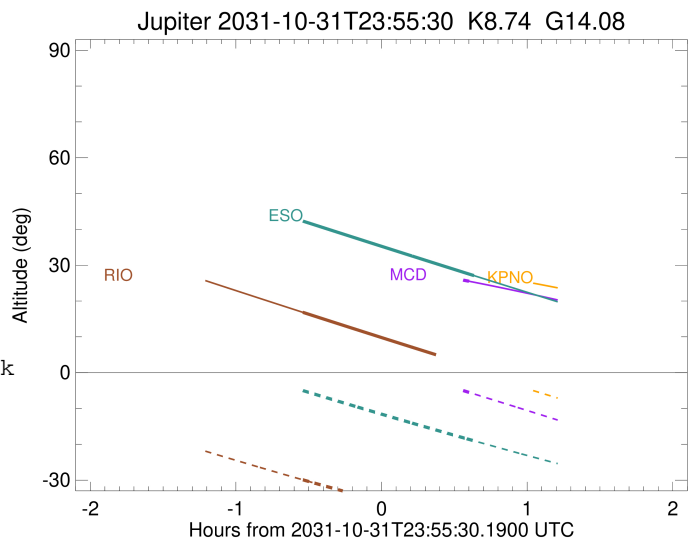
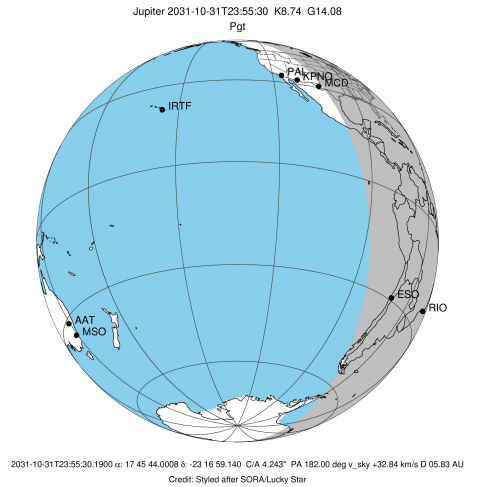
Observable events with sun below -5 deg and altitude above 5 deg

Obs	Location	lat	Elon	Target	Observed Events Interval	OCode
PIC	Pic du Midi	42.9	0.1			Pnn
PAL	Palomar Mt (200")	33.4	243.1			Pnn
PMO	Purple Mtn Obs. Nanking	32.1	118.8			Pnn
KPNO	Kitt Peak Natl Obs	32.0	248.4			Pnn
MCD	McDonald Obs. 2.7m	30.7	256.0	+	NOV 01 00:31 - NOV 01 00:31	Pne
TEN	Teide Obs./Tenerife	28.3	343.5			Pnn
IRTF	Mauna Kea/IRTF	19.8	204.5			Pnn
KAV	Kavalur Observatory	12.6	78.8			Pnn
RIO	Rio de Janeiro	-22.9	316.8	+	OCT 31 23:23 - OCT 31 23:23	Pin
ESO	European Southern Obs. (3.6m)	-29.3	289.3	+	NOV 01 00:33 - NOV 01 00:33	Pne
AAT	Siding Spring (AAT)	-31.3	149.1			Pnn
SAAO	So. Afr. Astro. Obs. (Sutherland)	-32.4	20.8			Pnn
MSO	Mt. Stromlo Observatory	-35.3	149.0			Pnn



```

target                : Jupiter
target radius (km)   : 71492.00
C/A epoch             : 2031-10-31T23:56:46.250
Event type            : Pgt
: Jupiter occs: geocentric, topocentric
: Not a ringed target
Observer code         : MCD
Location              : McDonald Obs. 2.7m
Latitude (deg)        : 30.67158
E. Longitude (deg)    : 255.97844
Altitude (km)         : 2.075
Gaia source ID        : 4068803977670475392
2Mass ID (if available) : 17454399-2316590
ICRS Star Coord at Epoch: 17h 45m 44.00076s -23:16:59.14018s
RUWE (>1.4 is poor) : 1.02
K magnitude           : 8.741
G magnitude           : 14.078
RP magnitude          : 12.728
BP magnitude          : 16.272
DUPflag              : 0
Distance (au)         : 5.832
f0 (km)               : 0.00
g0 (km)               : 0.00
skyplane vel. (km/s) : 32.84
Sun-Target sep (deg)  : 48.81
Sun-Moon sep (deg)    : 151.76
B (ring opening deg) : -2.21
PA of pole (deg)      : 0.70
Pole direction: RA (deg): 268.05680
Dec (deg): 64.49652
C/A sky separation (") : 5.424
C/A sky separation (km) : 22943.5
NAIF SPICE kernels    : RAJobs_U111+rgf15.spk
URKALLv1.spk
naif0012.tls
nep097.bsp
nep101.bsp
sat4401.bsp
de440.bsp
earth_720101_070426.bpc
jup365.bsp
urall6.bsp
IAU_SATURN_for_RINGFIT.tpc
pck00010.tpc
earth_200101_990628_predict.bpc
uranus_ringframes_rfrench20220627_v1.tf
neptune_ringframes_rfrench20220702a_v1.tf
earth_flat_IAU.spk
    
```

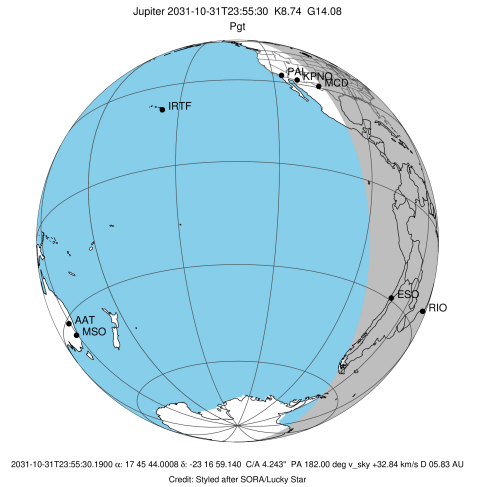


x: target alt < 5.0 deg or sun > -5.0 deg

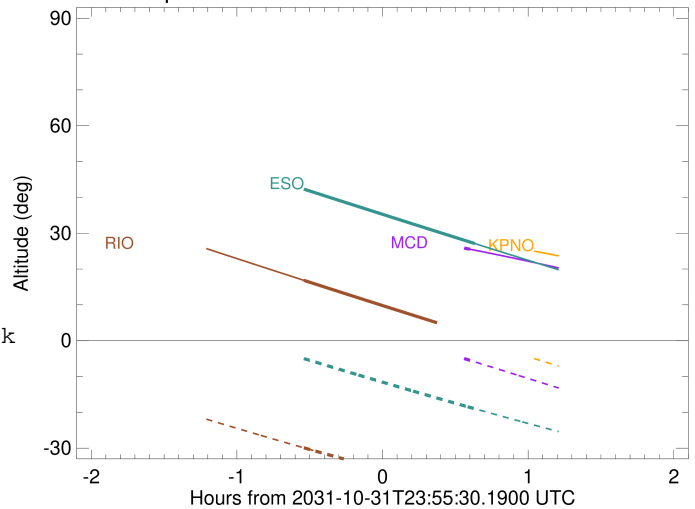
Target	I/E	UTC	alt	alt-sun	radius	lat-geo	lat-geodetic
Jupiter	I	2031-10-31T23:22:00.451	33.00	8.76x	71491.4	17.50	19.81
Jupiter	E	2031-11-01T00:31:29.617	25.53	-5.49	71491.2	19.87	22.43

```

target                : Jupiter
target radius (km)   : 71492.00
C/A epoch            : 2031-10-31T23:58:33.770
Event type          : Pgt
                    : Jupiter occs: geocentric, topocentric
                    : Not a ringed target
Observer code       : RIO
Location            : Rio de Janeiro
Latitude (deg)      : -22.89506
E. Longitude (deg)  : 316.77708
Altitude (km)       : 0.033
Gaia source ID      : 4068803977670475392
2Mass ID (if available) : 17454399-2316590
ICRS Star Coord at Epoch: 17h 45m 44.00076s -23:16:59.14018s
RUWE (>1.4 is poor) : 1.02
K magnitude         : 8.741
G magnitude         : 14.078
RP magnitude        : 12.728
BP magnitude        : 16.272
DUPflag            : 0
Distance (au)       : 5.832
f0 (km)             : 0.00
g0 (km)             : 0.00
skyplane vel. (km/s) : 32.84
Sun-Target sep (deg) : 48.81
Sun-Moon sep (deg)  : 152.10
B (ring opening deg) : -2.21
PA of pole (deg)    : 0.70
Pole direction: RA (deg): 268.05680
Dec (deg): 64.49652
C/A sky separation (" ) : 3.763
C/A sky separation (km) : 15918.4
NAIF SPICE kernels  : RAJobs_U111+rgf15.spk
URKALLv1.spk
naif0012.tls
nep097.bsp
nep101.bsp
sat4401.bsp
de440.bsp
earth_720101_070426.bpc
jup365.bsp
urall6.bsp
IAU_SATURN_for_RINGFIT.tpc
pck00010.tpc
earth_200101_990628_predict.bpc
uranus_ringframes_rfrench20220627_v1.tf
neptune_ringframes_rfrench20220702a_v1.tf
earth_flat_IAU.spk
    
```



Jupiter 2031-10-31T23:55:30 K8.74 G14.08

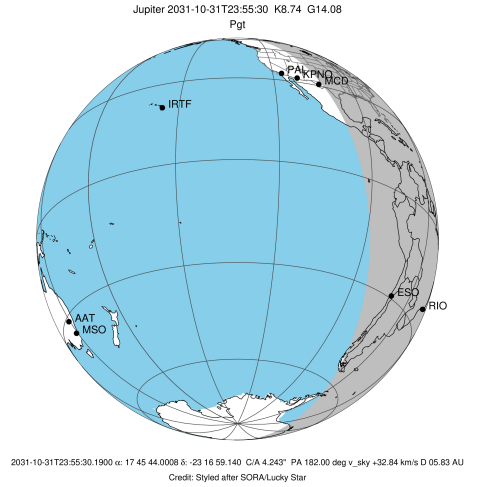


x: target alt < 5.0 deg or sun > -5.0 deg

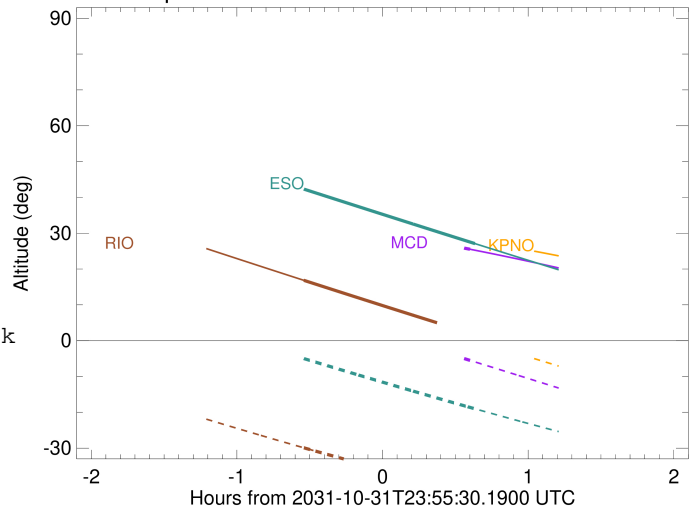
Target	I/E	UTC	alt	alt-sun	radius	lat-geo	lat-geodetic
Jupiter	I	2031-10-31T23:23:08.381	16.83	-29.91	71491.7	11.85	13.48
Jupiter	E	2031-11-01T00:33:54.246	1.63x	-42.32	71491.6	13.86	15.75

```

target           : Jupiter
target radius (km) : 71492.00
C/A epoch       : 2031-10-31T23:58:03.650
Event type      : Pgt
: Jupiter occs: geocentric, topocentric
: Not a ringed target
Observer code   : ESO
Location        : European Southern Obs. (3.6m)
Latitude (deg)  : -29.26097
E. Longitude (deg) : 289.26831
Altitude (km)   : 2.400
Gaia source ID  : 4068803977670475392
2Mass ID (if available) : 17454399-2316590
ICRS Star Coord at Epoch: 17h 45m 44.00076s -23:16:59.14018s
RUWE (>1.4 is poor) : 1.02
K magnitude     : 8.741
G magnitude     : 14.078
RP magnitude    : 12.728
BP magnitude    : 16.272
DUPflag        : 0
Distance (au)   : 5.832
f0 (km)         : 0.00
g0 (km)         : 0.00
skyplane vel. (km/s) : 32.84
Sun-Target sep (deg) : 48.81
Sun-Moon sep (deg) : 152.14
B (ring opening deg) : -2.21
PA of pole (deg) : 0.70
Pole direction: RA (deg): 268.05680
Dec (deg): 64.49652
C/A sky separation (") : 3.859
C/A sky separation (km) : 16324.2
NAIF SPICE kernels : RAJobs_U111+rgf15.spk
URKALLv1.spk
naif0012.tls
nep097.bsp
nep101.bsp
sat4401.bsp
de440.bsp
earth_720101_070426.bpc
jup365.bsp
urall6.bsp
IAU_SATURN_for_RINGFIT.tpc
pck00010.tpc
earth_200101_990628_predict.bpc
uranus_ringframes_rfrench20220627_v1.tf
neptune_ringframes_rfrench20220702a_v1.tf
earth_flat_IAU.spk
    
```



Jupiter 2031-10-31T23:55:30 K8.74 G14.08



x: target alt < 5.0 deg or sun > -5.0 deg

Target	I/E	UTC	alt	alt-sun	radius	lat-geo	lat-geodetic
Jupiter	I	2031-10-31T23:22:29.253	42.44	-4.87x	71491.7	12.11	13.78
Jupiter	E	2031-11-01T00:33:33.790	27.10	-19.01	71491.6	14.24	16.18