

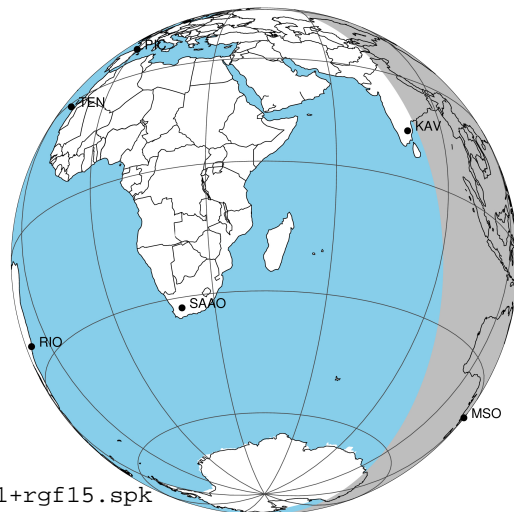
target : Jupiter
 target radius (km) : 71492.00
 C/A epoch : 2031-11-05T11:59:11.520
 Event type : Pgt
 : Jupiter occs: geocentric, topocentric
 : Not a ringed target
 Gaia source ID : 4068674608868816512
 2Mass ID (if available) : 17492693-2318272

Jupiter 2031-11-05T11:59:11 K9.79 G13.84 Pgt

ICRS Star Coord at Epoch: 17h 49m 26.93134s -23:18:27.23705s

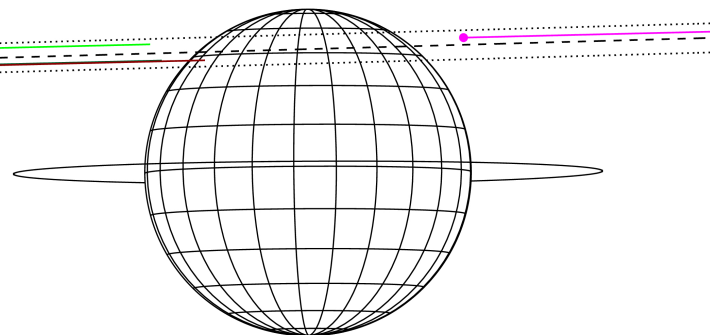
RUWE (>1.4 is poor) : 1.01
 K magnitude : 9.785
 G magnitude : 13.842
 RP magnitude : 12.736
 BP magnitude : 15.111
 DUPflag : 0
 Distance (au) : 5.882
 f0 (km) : 0.00
 g0 (km) : 0.00
 skyplane vel. (km/s) : 34.26
 Sun-Target sep (deg) : 45.16
 Sun-Moon sep (deg) : 154.27
 B (ring opening deg) : -2.19
 PA of pole (deg) : 0.30
 Pole direction: RA (deg): 268.05680
 Dec (deg): 64.49652
 C/A sky separation (") : 12.663
 C/A sky separation (km) : 54019.9
 NAIF SPICE kernels : RAJobs_U111+rgf15.spk

Jupiter 2031-11-05T11:59:11 K9.79 G13.84
 Pgt



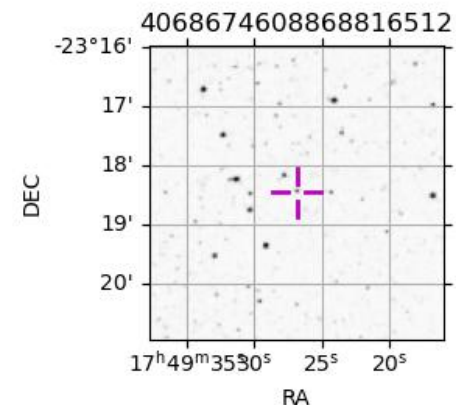
2031-11-05T11:59:11.5200 α: 17 49 26.9313 δ: -23 18 27.237 C/A ***** PA 181.60 deg v_sky +34.26 km/s D 05.88 AU
 Credit: Styled after SORA/Lucky Star

Earth
 PMO
 KAV
 AAT
 MSO



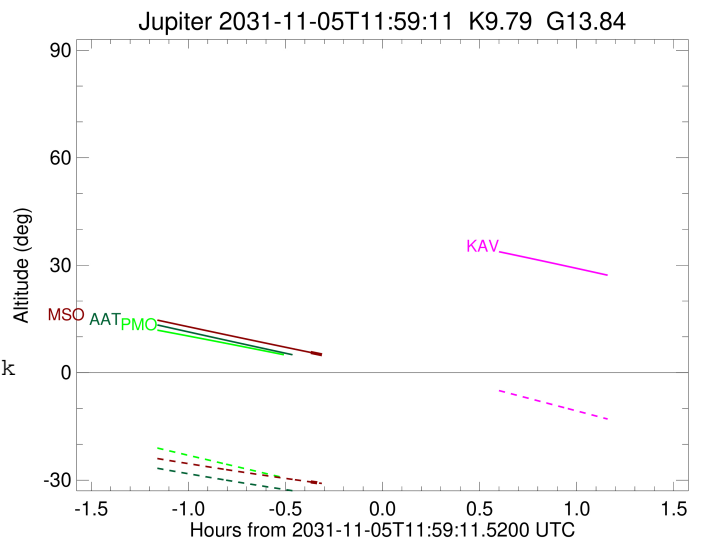
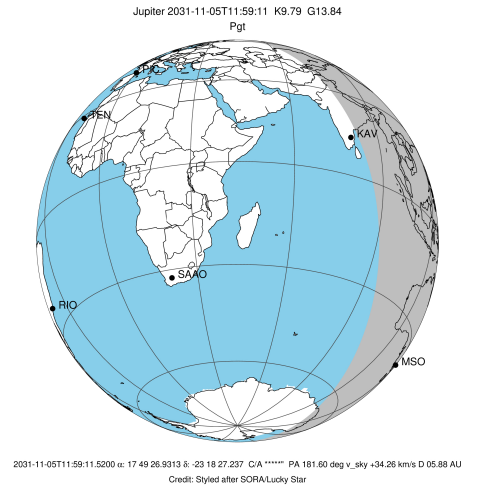
Observable events with sun below -5 deg and altitude above 5 deg

Obs	Location	lat	Elon	Target	Observed Events Interval	OCode
PIC	Pic du Midi	42.9	0.1			Pnn
PAL	Palomar Mt (200")	33.4	243.1			Pnn
PMO	Purple Mtn Obs. Nanking	32.1	118.8			Pnn
KPNO	Kitt Peak Natl Obs	32.0	248.4			Pnn
MCD	McDonald Obs. 2.7m	30.7	256.0			Pnn
TEN	Teide Obs./Tenerife	28.3	343.5			Pnn
IRTF	Mauna Kea/IRTF	19.8	204.5			Pnn
KAV	Kavalur Observatory	12.6	78.8			Pnn
RIO	Rio de Janeiro	-22.9	316.8			Pnn
ESO	European Southern Obs. (3.6m)	-29.3	289.3			Pnn
AAT	Siding Spring (AAT)	-31.3	149.1			Pnn
SAAO	So. Afr. Astro. Obs. (Sutherland)	-32.4	20.8			Pnn
MSO	Mt. Stromlo Observatory	-35.3	149.0	+	NOV 05 11:37 - NOV 05 11:37	Pin



```

target                : Jupiter
target radius (km)   : 71492.00
C/A epoch             : 2031-11-05T12:01:46.680
Event type            : Pgt
: Jupiter occs: geocentric, topocentric
: Not a ringed target
Observer code         : MSO
Location              : Mt. Stromlo Observatory
Latitude (deg)        : -35.32000
E. Longitude (deg)    : 149.00833
Altitude (km)         : 0.770
Gaia source ID        : 4068674608868816512
2Mass ID (if available) : 17492693-2318272
ICRS Star Coord at Epoch: 17h 49m 26.93134s -23:18:27.23705s
RUWE (>1.4 is poor)  : 1.01
K magnitude           : 9.785
G magnitude           : 13.842
RP magnitude          : 12.736
BP magnitude          : 15.111
DUPflag              : 0
Distance (au)         : 5.882
f0 (km)               : 0.00
g0 (km)               : 0.00
skyplane vel. (km/s) : 34.26
Sun-Target sep (deg)  : 45.16
Sun-Moon sep (deg)    : 153.73
B (ring opening deg) : -2.19
PA of pole (deg)      : 0.30
Pole direction: RA (deg): 268.05680
Dec (deg): 64.49652
C/A sky separation (") : 11.768
C/A sky separation (km) : 50203.3
NAIF SPICE kernels   : RAJobs_U111+rgf15.spk
URKALLv1.spk
naif0012.tls
nep097.bsp
nep101.bsp
sat4401.bsp
de440.bsp
earth_720101_070426.bpc
jup365.bsp
urall6.bsp
IAU_SATURN_for_RINGFIT.tpc
pck00010.tpc
earth_200101_990628_predict.bpc
uranus_ringframes_rfrench20220627_v1.tf
neptune_ringframes_rfrench20220702a_v1.tf
earth_flat_IAU.spk
    
```



x: target alt < 5.0 deg or sun > -5.0 deg

Target	I/E	UTC	alt	alt-sun	radius	lat-geo	lat-geodetic
Jupiter	I	2031-11-05T11:37:04.457	5.63	-30.50	71488.9	43.51	47.23
Jupiter	E	2031-11-05T12:26:26.901	-3.29x	-35.64	71488.6	45.62	49.32