

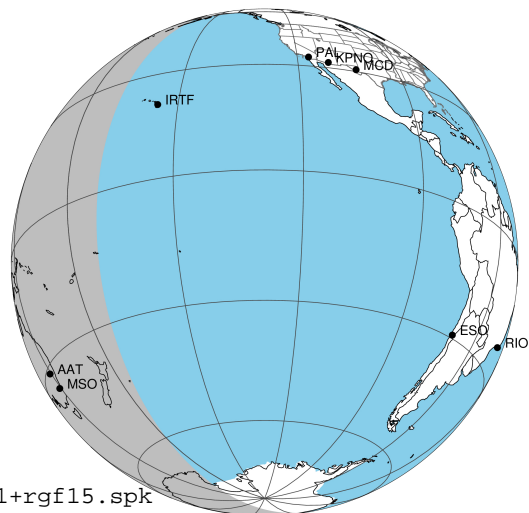
target : Jupiter
 target radius (km) : 71492.00
 C/A epoch : 2032-03-03T17:30:43.820
 Event type : Pgt
 : Jupiter occs: geocentric, topocentric
 : Not a ringed target
 Gaia source ID : 6868043380829344640
 2Mass ID (if available) : 19414414-2128551

Jupiter 2032-03-03T17:30:43 K9.97 G10.97 Pgt

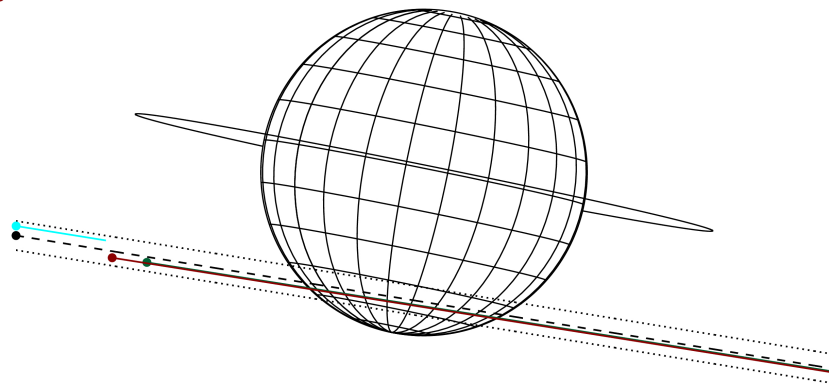
ICRS Star Coord at Epoch: 19h 41m 44.16023s -21:28:55.06998s

RUWE (>1.4 is poor) : 0.87
 K magnitude : 9.966
 G magnitude : 10.968
 RP magnitude : 10.589
 BP magnitude : 11.195
 DUPflag : 0
 Distance (au) : 5.773
 f0 (km) : 0.00
 g0 (km) : 0.00
 skyplane vel. (km/s) : 32.81
 Sun-Target sep (deg) : 49.70
 Sun-Moon sep (deg) : 56.96
 B (ring opening deg) : -1.45
 PA of pole (deg) : -11.42
 Pole direction: RA (deg): 268.05671
 Dec (deg): 64.49653
 C/A sky separation (") : 13.374
 C/A sky separation (km) : 55995.3
 NAIF SPICE kernels : RAJobs_U111+rgf15.spk

Jupiter 2032-03-03T17:30:43 K9.97 G10.97
 Pgt



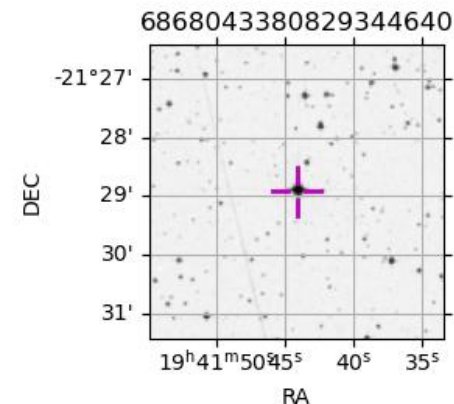
Earth
 IRTF
 AAT
 MSO



2032-03-03T17:30:43.8200 @: 19 41 44.16023 -21 28 55.070 C/A ***** PA 350.75 deg v_sky +32.81 km/s D 05.77 AU
 Credit: Styled after SORA/Lucky Star

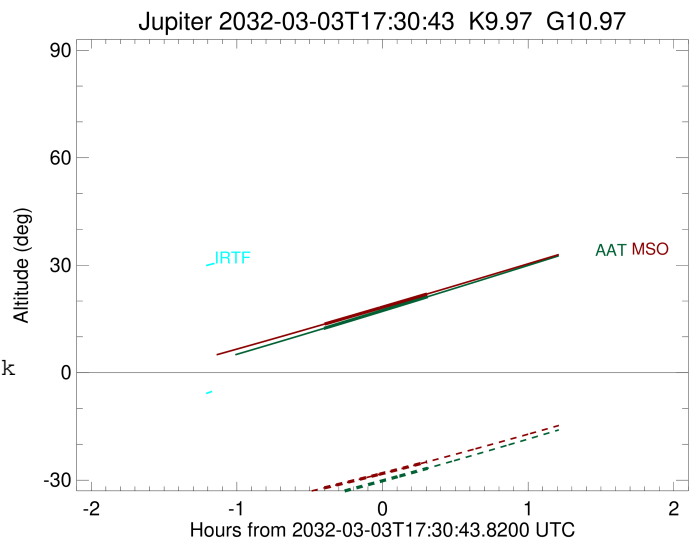
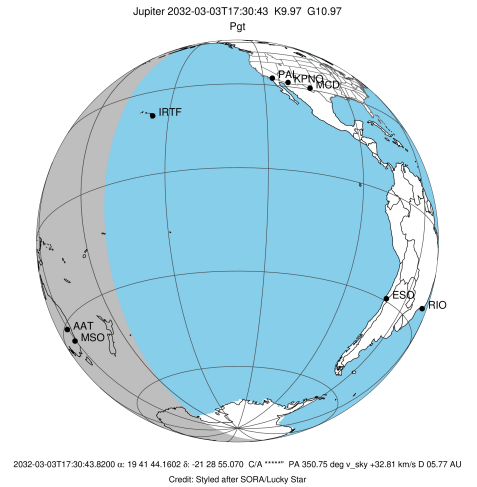
Observable events with sun below -5 deg and altitude above 5 deg

Obs	Location	lat	Elon	Target	Observed Events Interval	OEcode
PIC	Pic du Midi	42.9	0.1			Pnn
PAL	Palomar Mt (200")	33.4	243.1			Pnn
PMO	Purple Mtn Obs. Nanking	32.1	118.8			Pnn
KPNO	Kitt Peak Natl Obs	32.0	248.4			Pnn
MCD	McDonald Obs. 2.7m	30.7	256.0			Pnn
TEN	Teide Obs./Tenerife	28.3	343.5			Pnn
IRTF	Mauna Kea/IRTF	19.8	204.5			Pnn
KAV	Kavalur Observatory	12.6	78.8			Pnn
RIO	Rio de Janeiro	-22.9	316.8			Pnn
ESO	European Southern Obs. (3.6m)	-29.3	289.3			Pnn
AAT	Siding Spring (AAT)	-31.3	149.1	+ +	MAR 03 17:06 - MAR 03 17:49	Pie
SAAO	So. Afr. Astro. Obs. (Sutherland)	-32.4	20.8			Pnn
MSO	Mt. Stromlo Observatory	-35.3	149.0	+ +	MAR 03 17:06 - MAR 03 17:49	Pie



```

target                : Jupiter
target radius (km)   : 71492.00
C/A epoch            : 2032-03-03T17:27:54.160
Event type           : Pgt
: Jupiter occs: geocentric, topocentric
: Not a ringed target
Observer code        : AAT
Location             : Siding Spring (AAT)
Latitude (deg)       : -31.27703
E. Longitude (deg)   : 149.06608
Altitude (km)        : 1.164
Gaia source ID       : 6868043380829344640
2Mass ID (if available) : 19414414-2128551
ICRS Star Coord at Epoch: 19h 41m 44.16023s -21:28:55.06998s
RUWE (>1.4 is poor) : 0.87
K magnitude          : 9.966
G magnitude          : 10.968
RP magnitude         : 10.589
BP magnitude         : 11.195
DUPflag             : 0
Distance (au)        : 5.773
f0 (km)              : 0.00
g0 (km)              : 0.00
skyplane vel. (km/s) : 32.81
Sun-Target sep (deg) : 49.70
Sun-Moon sep (deg)   : 56.72
B (ring opening deg) : -1.45
PA of pole (deg)     : -11.42
Pole direction: RA (deg): 268.05671
Dec (deg): 64.49653
C/A sky separation (") : 13.826
C/A sky separation (km) : 57887.7
NAIF SPICE kernels   : RAJobs_U111+rgf15.spk
URKALLv1.spk
naif0012.tls
nep097.bsp
nep101.bsp
sat4401.bsp
de440.bsp
earth_720101_070426.bpc
jup365.bsp
urall6.bsp
IAU_SATURN_for_RINGFIT.tpc
pck00010.tpc
earth_200101_990628_predict.bpc
uranus_ringframes_rfrench20220627_v1.tf
neptune_ringframes_rfrench20220702a_v1.tf
earth_flat_IAU.spk
    
```

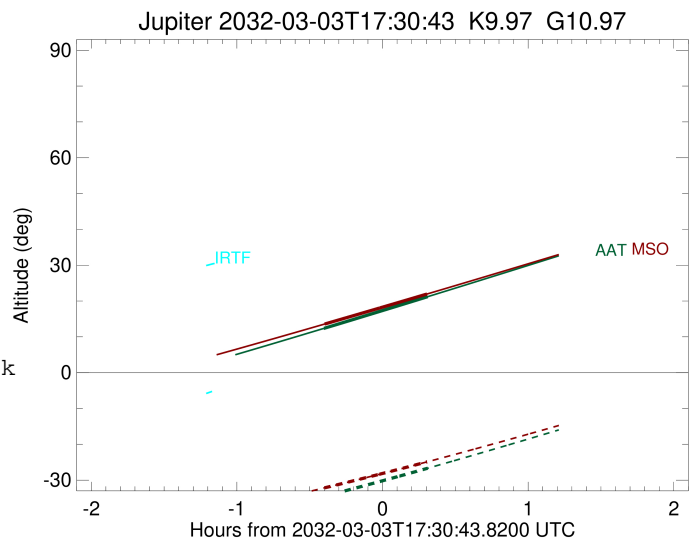
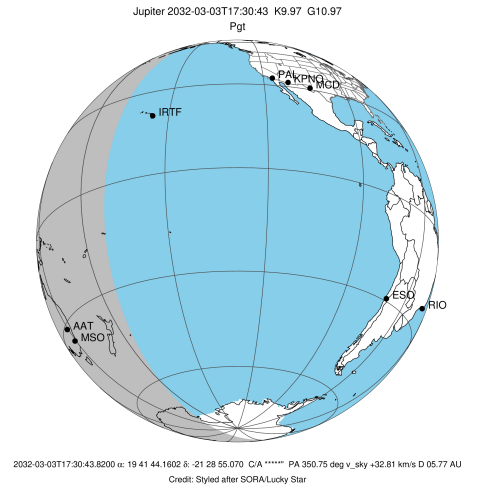


x: target alt < 5.0 deg or sun > -5.0 deg

Target	I/E	UTC	alt	alt-sun	radius	lat-geo	lat-geodetic
Jupiter	I	2032-03-03T17:06:33.615	12.36	-34.53	71490.0	-56.45	-59.74
Jupiter	E	2032-03-03T17:49:16.334	21.19	-26.69	71490.2	-51.65	-55.18

```

target                : Jupiter
target radius (km)   : 71492.00
C/A epoch             : 2032-03-03T17:27:59.420
Event type            : Pgt
: Jupiter occs: geocentric, topocentric
: Not a ringed target
Observer code         : MSO
Location              : Mt. Stromlo Observatory
Latitude (deg)       : -35.32000
E. Longitude (deg)   : 149.00833
Altitude (km)        : 0.770
Gaia source ID       : 6868043380829344640
2Mass ID (if available) : 19414414-2128551
ICRS Star Coord at Epoch: 19h 41m 44.16023s -21:28:55.06998s
RUWE (>1.4 is poor) : 0.87
K magnitude           : 9.966
G magnitude           : 10.968
RP magnitude         : 10.589
BP magnitude         : 11.195
DUPflag              : 0
Distance (au)        : 5.773
f0 (km)              : 0.00
g0 (km)              : 0.00
skyplane vel. (km/s) : 32.81
Sun-Target sep (deg) : 49.70
Sun-Moon sep (deg)   : 56.75
B (ring opening deg) : -1.45
PA of pole (deg)     : -11.42
Pole direction: RA (deg): 268.05671
Dec (deg): 64.49653
C/A sky separation (") : 13.920
C/A sky separation (km) : 58283.9
NAIF SPICE kernels   : RAJobs_U111+rgf15.spk
URKALLv1.spk
naif0012.tls
nep097.bsp
nep101.bsp
sat4401.bsp
de440.bsp
earth_720101_070426.bpc
jup365.bsp
urall6.bsp
IAU_SATURN_for_RINGFIT.tpc
pck00010.tpc
earth_200101_990628_predict.bpc
uranus_ringframes_rfrench20220627_v1.tf
neptune_ringframes_rfrench20220702a_v1.tf
earth_flat_IAU.spk
    
```



x: target alt < 5.0 deg or sun > -5.0 deg

Target	I/E	UTC	alt	alt-sun	radius	lat-geo	lat-geodetic
Jupiter	I	2032-03-03T17:06:55.820	13.58	-32.14	71490.0	-56.99	-60.24
Jupiter	E	2032-03-03T17:49:04.549	21.95	-24.90	71490.2	-52.20	-55.71