

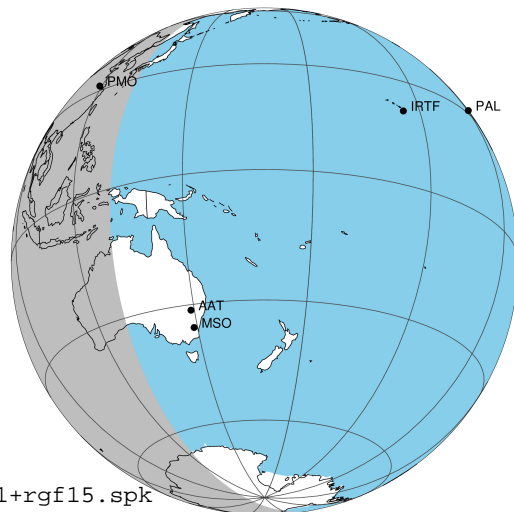
target : Jupiter
 target radius (km) : 71492.00
 C/A epoch : 2032-03-08T21:23:18.480
 Event type : Pgt
 : Jupiter occs: geocentric, topocentric
 : Not a ringed target
 Gaia source ID : 6865119641972067712
 2Mass ID (if available) : 19454578-2119232

Jupiter 2032-03-08T21:23:18 K9.28 G10.88 Pgt

ICRS Star Coord at Epoch: 19h 45m 45.77413s -21:19:22.60953s

RUWE (>1.4 is poor) : 0.86
 K magnitude : 9.276
 G magnitude : 10.875
 RP magnitude : 10.330
 BP magnitude : 11.243
 DUPflag : 0
 Distance (au) : 5.708
 f0 (km) : 0.00
 g0 (km) : 0.00
 skyplane vel. (km/s) : 31.08
 Sun-Target sep (deg) : 53.91
 Sun-Moon sep (deg) : 15.62
 B (ring opening deg) : -1.41
 PA of pole (deg) : -11.81
 Pole direction: RA (deg): 268.05671
 Dec (deg): 64.49653
 C/A sky separation (") : 0.791
 C/A sky separation (km) : 3273.9
 NAIF SPICE kernels : RAJobs_U111+rgf15.spk

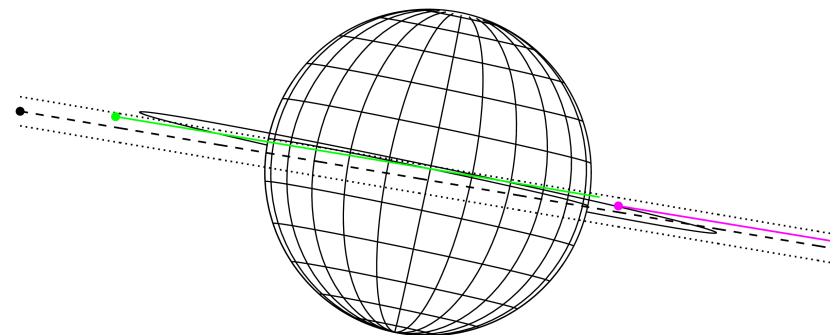
Jupiter 2032-03-08T21:23:18 K9.28 G10.88
 Pgt



2032-03-08T21:23:18.4800 ex: 19 45 45.7741 s: -21 19 22.610 C/A 0.798" PA 350.43 deg v_sky +31.08 km/s D 05.71 AU

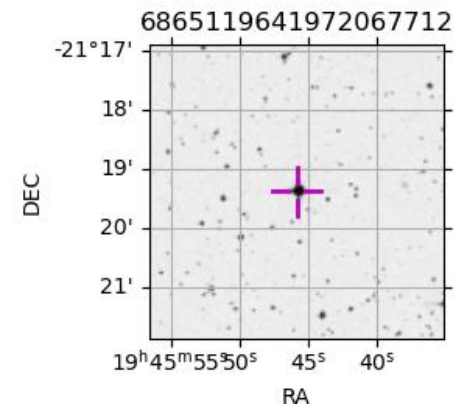
Credit: Styled after SORA/Lucky Star

Earth
 PMO
 KAV



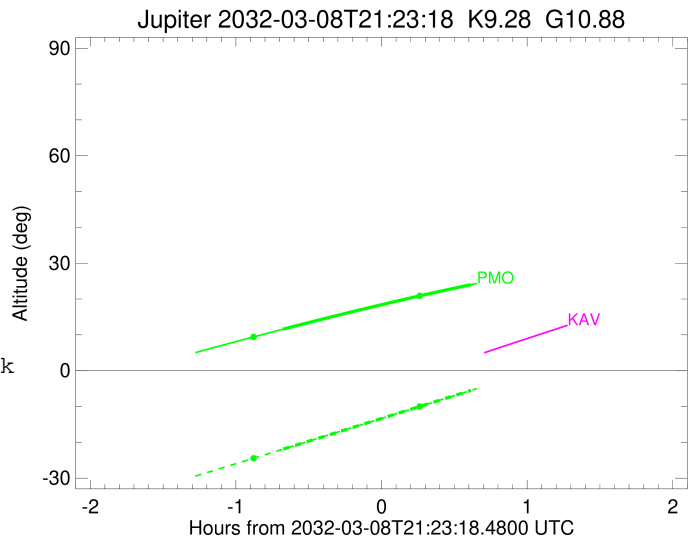
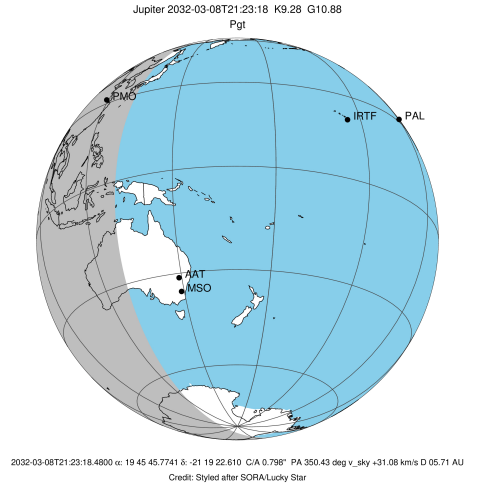
Observable events with sun below -5 deg and altitude above 5 deg

Obs	Location	lat	Elon	Target	Observed Events Interval	OEcode
PIC	Pic du Midi	42.9	0.1			Pnn
PAL	Palomar Mt (200")	33.4	243.1			Pnn
PMO	Purple Mtn Obs. Nanking	32.1	118.8	+ +	MAR 08 20:42 - MAR 08 22:00	Pie
KPNO	Kitt Peak Natl Obs	32.0	248.4			Pnn
MCD	McDonald Obs. 2.7m	30.7	256.0			Pnn
TEN	Teide Obs./Tenerife	28.3	343.5			Pnn
IRTF	Mauna Kea/IRTF	19.8	204.5			Pnn
KAV	Kavalur Observatory	12.6	78.8			Pnn
RIO	Rio de Janeiro	-22.9	316.8			Pnn
ESO	European Southern Obs. (3.6m)	-29.3	289.3			Pnn
AAT	Siding Spring (AAT)	-31.3	149.1			Pnn
SAAO	So. Afr. Astro. Obs. (Sutherland)	-32.4	20.8			Pnn
MSO	Mt. Stromlo Observatory	-35.3	149.0			Pnn



```

target                : Jupiter
target radius (km)   : 71492.00
C/A epoch             : 2032-03-08T21:21:29.680
Event type            : Pgt
: Jupiter occs: geocentric, topocentric
: Not a ringed target
Observer code         : PMO
Location              : Purple Mtn Obs. Nanking
Latitude (deg)        : 32.06667
E. Longitude (deg)    : 118.82089
Altitude (km)         : 0.364
Gaia source ID        : 6865119641972067712
2Mass ID (if available) : 19454578-2119232
ICRS Star Coord at Epoch: 19h 45m 45.77413s -21:19:22.60953s
RUWE (>1.4 is poor)  : 0.86
K magnitude           : 9.276
G magnitude           : 10.875
RP magnitude          : 10.330
BP magnitude          : 11.243
DUPflag              : 0
Distance (au)         : 5.708
f0 (km)               : 0.00
g0 (km)               : 0.00
skyplane vel. (km/s) : 31.08
Sun-Target sep (deg)  : 53.91
Sun-Moon sep (deg)    : 15.95
B (ring opening deg) : -1.41
PA of pole (deg)      : -11.81
Pole direction: RA (deg): 268.05671
Dec (deg): 64.49653
C/A sky separation (") : 0.424
C/A sky separation (km) : 1753.3
NAIF SPICE kernels    : RAJobs_U111+rgf15.spk
URKALLv1.spk
naif0012.tls
nep097.bsp
nep101.bsp
sat4401.bsp
de440.bsp
earth_720101_070426.bpc
jup365.bsp
urall6.bsp
IAU_SATURN_for_RINGFIT.tpc
pck00010.tpc
earth_200101_990628_predict.bpc
uranus_ringframes_rfrench20220627_v1.tf
neptune_ringframes_rfrench20220702a_v1.tf
earth_flat_IAU.spk
    
```



x: target alt < 5.0 deg or sun > -5.0 deg

Target	I/E	UTC	alt	alt-sun	radius	lat-geo	lat-geodetic
Jupiter	I	2032-03-08T20:42:52.492	11.60	-21.88	71492.0	-0.98	-1.12
Jupiter	E	2032-03-08T22:00:11.339	24.01	-5.51	71492.0	3.74	4.28