

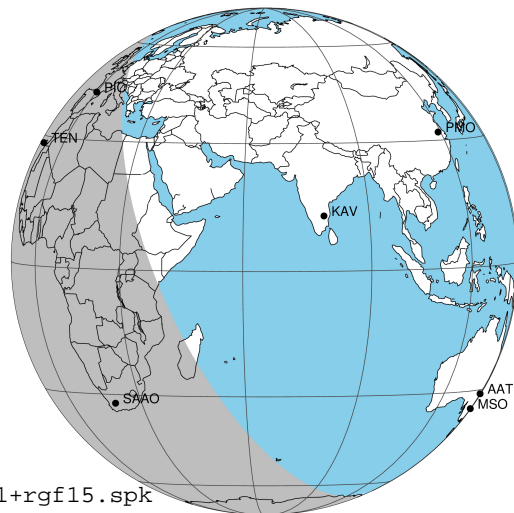
target : Jupiter
 target radius (km) : 71492.00
 C/A epoch : 2034-06-04T03:23:06.850
 Event type : Pgt
 : Jupiter occs: geocentric, topocentric
 : Not a ringed target
 Gaia source ID : 2547505223934664960
 2Mass ID (if available) : 00314795+0208269

Jupiter 2034-06-04T03:23:06 K8.85 G10.11 Pgt

ICRS Star Coord at Epoch: 00h 31m 47.92679s +02:08:25.41713s

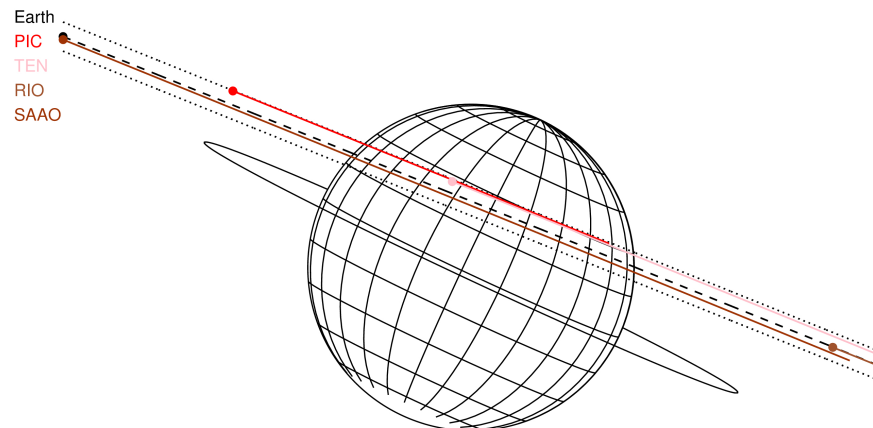
RUWE (>1.4 is poor) : 0.89
 K magnitude : 8.854
 G magnitude : 10.114
 RP magnitude : 9.667
 BP magnitude : 10.397
 DUPflag : 0
 Distance (au) : 5.305
 f0 (km) : 0.00
 g0 (km) : 0.00
 skyplane vel. (km/s) : 26.12
 Sun-Target sep (deg) : 65.00
 Sun-Moon sep (deg) : 92.90
 B (ring opening deg) : 2.30
 PA of pole (deg) : -25.12
 Pole direction: RA (deg): 268.05641
 Dec (deg): 64.49671
 C/A sky separation (") : 7.009
 C/A sky separation (km) : 26967.6
 NAIF SPICE kernels : RAJobs_U111+rgf15.spk

Jupiter 2034-06-04T03:23:06 K8.85 G10.11
 Pgt



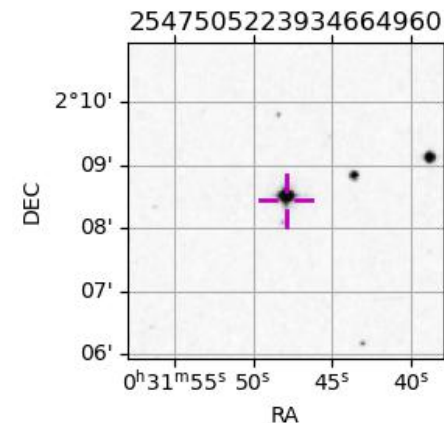
2034-06-04T03:23:06.8500 ex: 00 31 47.9268 s: +02 08 25.417 C/A 7.013" PA 158.04 deg v_sky +26.12 km/s D 05.31 AU

Credit: Styled after SORA/Lucky Star



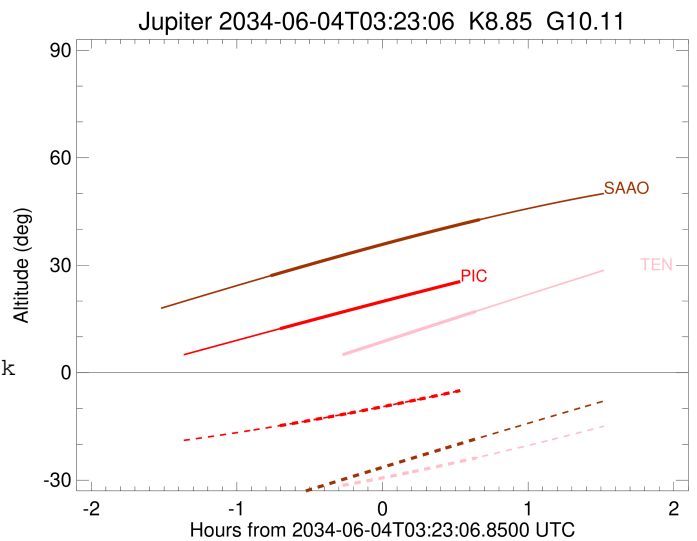
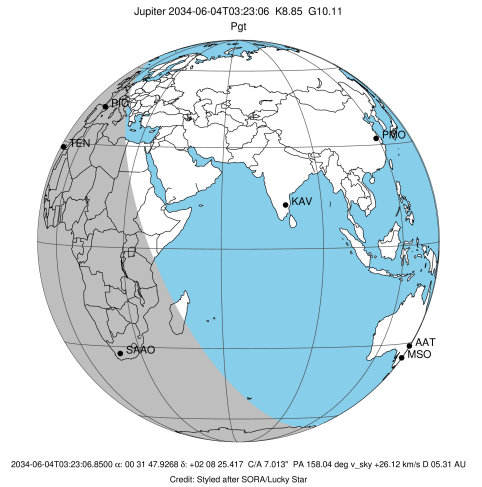
Observable events with sun below -5 deg and altitude above 5 deg

Obs	Location	lat	Elon	Target	Observed Events Interval	OCode
PIC	Pic du Midi	42.9	0.1	+	JUN 04 02:40 - JUN 04 02:40	Pin
PAL	Palomar Mt (200")	33.4	243.1			Pnn
PMO	Purple Mtn Obs. Nanking	32.1	118.8			Pnn
KPNO	Kitt Peak Natl Obs	32.0	248.4			Pnn
MCD	McDonald Obs. 2.7m	30.7	256.0			Pnn
TEN	Teide Obs./Tenerife	28.3	343.5	+	JUN 04 04:01 - JUN 04 04:01	Pne
IRTF	Mauna Kea/IRTF	19.8	204.5			Pnn
KAV	Kavalur Observatory	12.6	78.8			Pnn
RIO	Rio de Janeiro	-22.9	316.8			Pnn
ESO	European Southern Obs. (3.6m)	-29.3	289.3			Pnn
AAT	Siding Spring (AAT)	-31.3	149.1			Pnn
SAAO	So. Afr. Astro. Obs. (Sutherland)	-32.4	20.8	+	JUN 04 02:37 - JUN 04 04:03	Pie
MSO	Mt. Stromlo Observatory	-35.3	149.0			Pnn



```

target                : Jupiter
target radius (km)   : 71492.00
C/A epoch            : 2034-06-04T03:21:39.800
Event type          : Pgt
: Jupiter occs: geocentric, topocentric
: Not a ringed target
Observer code       : PIC
Location           : Pic du Midi
Latitude (deg)     : 42.93656
E. Longitude (deg) : 0.14231
Altitude (km)     : 2.890
Gaia source ID     : 2547505223934664960
2Mass ID (if available) : 00314795+0208269
ICRS Star Coord at Epoch: 00h 31m 47.92679s +02:08:25.41713s
RUWE (>1.4 is poor) : 0.89
K magnitude        : 8.854
G magnitude        : 10.114
RP magnitude       : 9.667
BP magnitude       : 10.397
DUPflag           : 0
Distance (au)     : 5.305
f0 (km)           : 0.00
g0 (km)           : 0.00
skyplane vel. (km/s) : 26.12
Sun-Target sep (deg) : 65.00
Sun-Moon sep (deg) : 93.24
B (ring opening deg) : 2.30
PA of pole (deg)  : -25.12
Pole direction: RA (deg): 268.05641
Dec (deg): 64.49671
C/A sky separation (") : 8.443
C/A sky separation (km) : 32487.8
NAIF SPICE kernels : RAJobs_U111+rgf15.spk
URKALLv1.spk
naif0012.tls
nep097.bsp
nep101.bsp
sat4401.bsp
de440.bsp
earth_720101_070426.bpc
jup365.bsp
urall6.bsp
IAU_SATURN_for_RINGFIT.tpc
pck00010.tpc
earth_200101_990628_predict.bpc
uranus_ringframes_rfrench20220627_v1.tf
neptune_ringframes_rfrench20220702a_v1.tf
earth_flat_IAU.spk
    
```

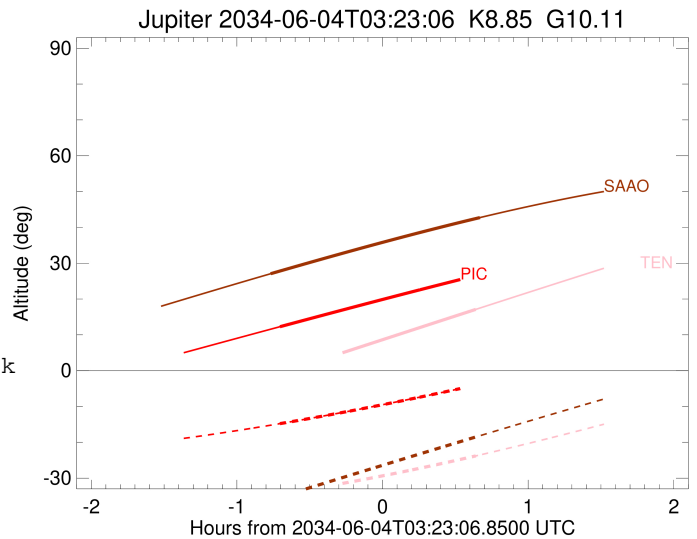
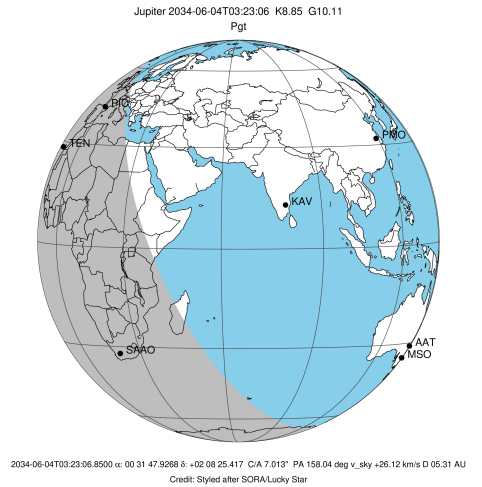


x: target alt < 5.0 deg or sun > -5.0 deg

Target	I/E	UTC	alt	alt-sun	radius	lat-geo	lat-geodetic
Jupiter	I	2034-06-04T02:40:52.314	12.27	-14.78	71490.8	23.97	26.92
Jupiter	E	2034-06-04T04:02:33.289	26.69	-3.90x	71490.2	29.99	33.36

```

target                : Jupiter
target radius (km)   : 71492.00
C/A epoch            : 2034-06-04T03:20:33.270
Event type          : Pgt
                    : Jupiter occs: geocentric, topocentric
                    : Not a ringed target
Observer code       : TEN
Location            : Teide Obs./Tenerife
Latitude (deg)      : 28.30050
E. Longitude (deg)  : 343.48909
Altitude (km)       : 2.395
Gaia source ID      : 2547505223934664960
2Mass ID (if available) : 00314795+0208269
ICRS Star Coord at Epoch: 00h 31m 47.92679s +02:08:25.41713s
RUWE (>1.4 is poor) : 0.89
K magnitude          : 8.854
G magnitude          : 10.114
RP magnitude         : 9.667
BP magnitude         : 10.397
DUPflag             : 0
Distance (au)       : 5.305
f0 (km)              : 0.00
g0 (km)              : 0.00
skyplane vel. (km/s) : 26.12
Sun-Target sep (deg) : 65.00
Sun-Moon sep (deg)  : 93.07
B (ring opening deg) : 2.30
PA of pole (deg)    : -25.12
Pole direction: RA (deg): 268.05641
Dec (deg): 64.49671
C/A sky separation (") : 8.266
C/A sky separation (km) : 31804.9
NAIF SPICE kernels  : RAJobs_U111+rgf15.spk
URKALLv1.spk
naif0012.tls
nep097.bsp
nep101.bsp
sat4401.bsp
de440.bsp
earth_720101_070426.bpc
jup365.bsp
urall6.bsp
IAU_SATURN_for_RINGFIT.tpc
pck00010.tpc
earth_200101_990628_predict.bpc
uranus_ringframes_rfrench20220627_v1.tf
neptune_ringframes_rfrench20220702a_v1.tf
earth_flat_IAU.spk
    
```

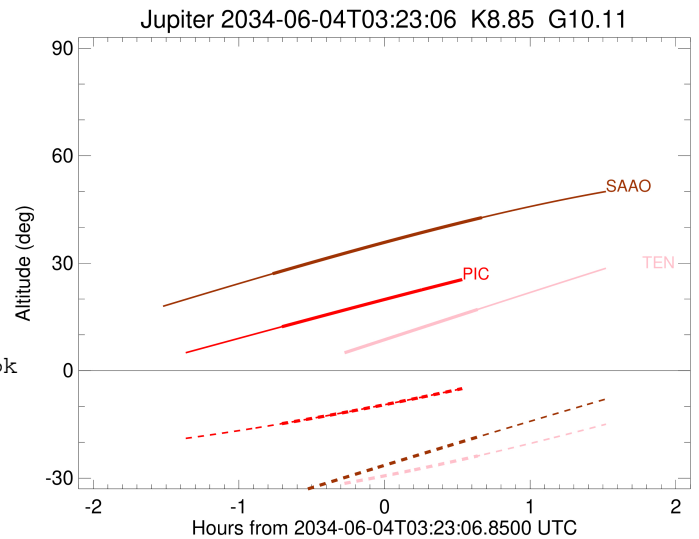
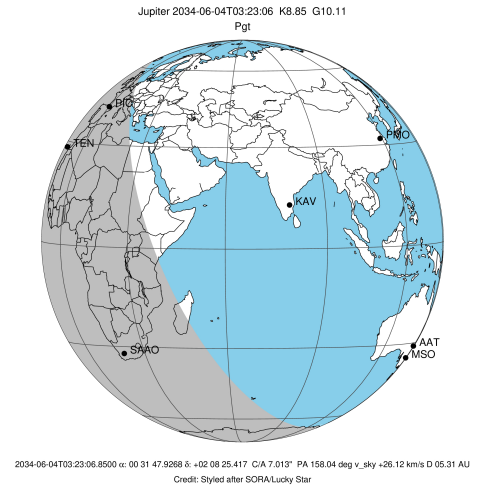


x: target alt < 5.0 deg or sun > -5.0 deg

Target	I/E	UTC	alt	alt-sun	radius	lat-geo	lat-geodetic
Jupiter	I	2034-06-04T02:39:40.889	-0.96x	-34.45	71490.9	23.29	26.17
Jupiter	E	2034-06-04T04:01:33.164	17.10	-23.79	71490.2	29.44	32.77

```

target                : Jupiter
target radius (km)   : 71492.00
C/A epoch             : 2034-06-04T03:20:05.140
Event type            : Pgt
: Jupiter occs: geocentric, topocentric
: Not a ringed target
Observer code         : SAAO
Location              : So. Afr. Astro. Obs. (Sutherland)
Latitude (deg)        : -32.37953
E. Longitude (deg)    : 20.81070
Altitude (km)         : 1.768
Gaia source ID        : 2547505223934664960
2Mass ID (if available) : 00314795+0208269
ICRS Star Coord at Epoch: 00h 31m 47.92679s +02:08:25.41713s
RUWE (>1.4 is poor) : 0.89
K magnitude           : 8.854
G magnitude           : 10.114
RP magnitude          : 9.667
BP magnitude          : 10.397
DUPflag              : 0
Distance (au)         : 5.305
f0 (km)               : 0.00
g0 (km)               : 0.00
skyplane vel. (km/s) : 26.12
Sun-Target sep (deg)  : 65.00
Sun-Moon sep (deg)    : 93.48
B (ring opening deg) : 2.30
PA of pole (deg)      : -25.12
Pole direction: RA (deg): 268.05641
Dec (deg): 64.49671
C/A sky separation (") : 6.523
C/A sky separation (km) : 25097.2
NAIF SPICE kernels    : RAJobs_U111+rgf15.spk
URKALLv1.spk
naif0012.tls
nep097.bsp
nep101.bsp
sat4401.bsp
de440.bsp
earth_720101_070426.bpc
jup365.bsp
urall6.bsp
IAU_SATURN_for_RINGFIT.tpc
pck00010.tpc
earth_200101_990628_predict.bpc
uranus_ringframes_rfrench20220627_v1.tf
neptune_ringframes_rfrench20220702a_v1.tf
earth_flat_IAU.spk
    
```



x: target alt < 5.0 deg or sun > -5.0 deg

Target	I/E	UTC	alt	alt-sun	radius	lat-geo	lat-geodetic
Jupiter	I	2034-06-04T02:37:00.122	27.05	-36.06	71491.3	17.61	19.94
Jupiter	E	2034-06-04T04:03:16.356	42.73	-18.15	71490.9	23.42	26.31