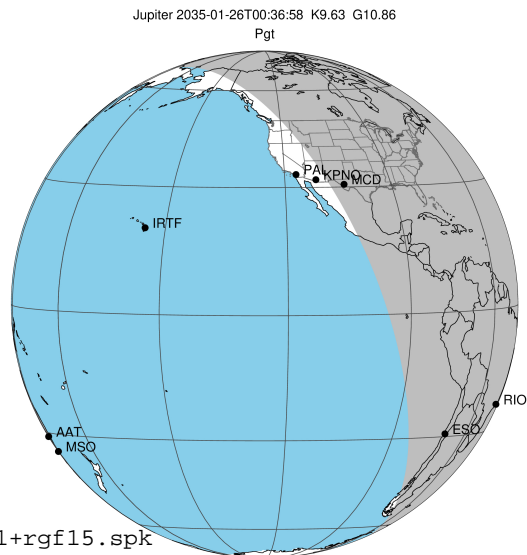


target : Jupiter
 target radius (km) : 71492.00
 C/A epoch : 2035-01-26T00:36:58.160
 Event type : Pgt
 : Jupiter occs: geocentric, topocentric
 : Not a ringed target
 Gaia source ID : 2550538089320422528
 2Mass ID (if available) : 00341608+0223337

Jupiter 2035-01-26T00:36:58 K9.63 G10.86 Pgt

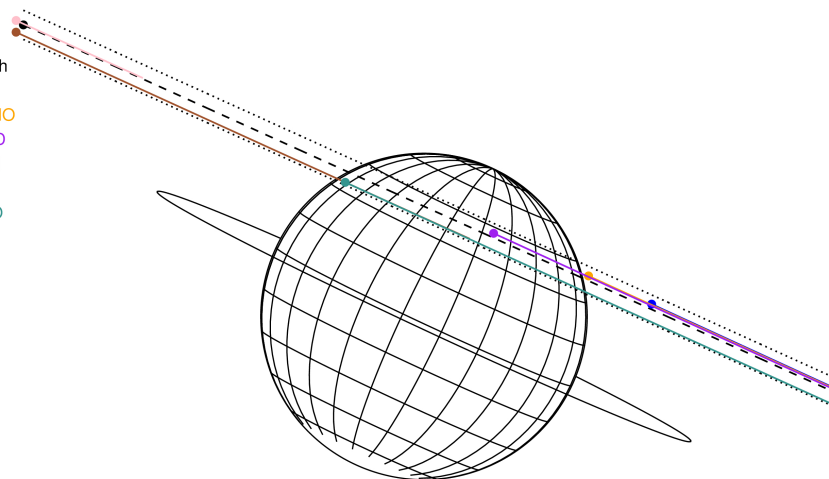
ICRS Star Coord at Epoch: 00h 34m 16.10727s +02:23:33.67179s

RUWE (>1.4 is poor) : 1.03
 K magnitude : 9.628
 G magnitude : 10.863
 RP magnitude : 10.427
 BP magnitude : 11.135
 DUPflag : 0
 Distance (au) : 5.315
 f0 (km) : 0.00
 g0 (km) : 0.00
 skyplane vel. (km/s) : 26.85
 Sun-Target sep (deg) : 63.44
 Sun-Moon sep (deg) : 145.20
 B (ring opening deg) : 2.34
 PA of pole (deg) : -25.07
 Pole direction: RA (deg): 268.05640
 Dec (deg): 64.49677
 C/A sky separation (") : 11.403
 C/A sky separation (km) : 43954.0
 NAIF SPICE kernels : RAJobs_U111+rgf15.spk



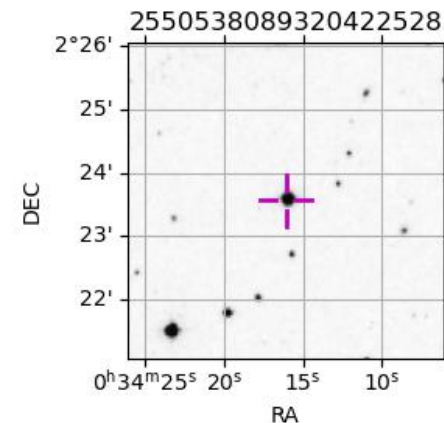
2035-01-26T00:36:58.1600 α: 00 34 16.1073 δ: +02 23 33.672 C/A ***** PA 155.63 deg v_sky +26.85 km/s D 05.31 AU
 Credit: Styled after SORA/Lucky Star

Earth
 PAL
 KPNO
 MCD
 TEN
 RIO
 ESO



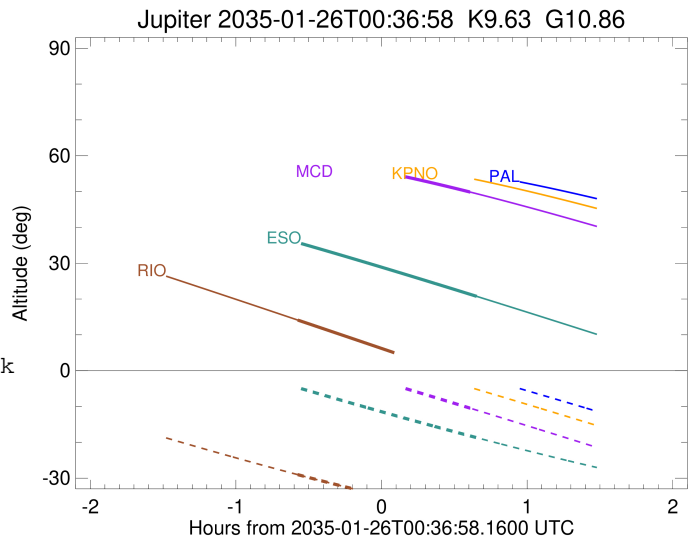
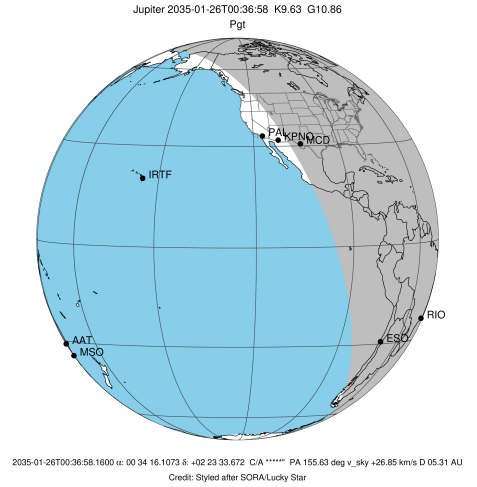
Observable events with sun below -5 deg and altitude above 5 deg

Obs	Location	lat	Elon	Target	Observed Events Interval	OCode
PIC	Pic du Midi	42.9	0.1			Pnn
PAL	Palomar Mt (200")	33.4	243.1			Pnn
PMO	Purple Mtn Obs. Nanking	32.1	118.8			Pnn
KPNO	Kitt Peak Natl Obs	32.0	248.4			Pnn
MCD	McDonald Obs. 2.7m	30.7	256.0	+	JAN 26 01:13 - JAN 26 01:13	Pne
TEN	Teide Obs./Tenerife	28.3	343.5			Pnn
IRTF	Mauna Kea/IRTF	19.8	204.5			Pnn
KAV	Kavalur Observatory	12.6	78.8			Pnn
RIO	Rio de Janeiro	-22.9	316.8	+	JAN 26 00:02 - JAN 26 00:02	Pin
ESO	European Southern Obs. (3.6m)	-29.3	289.3	+	JAN 26 01:16 - JAN 26 01:16	Pne
AAT	Siding Spring (AAT)	-31.3	149.1			Pnn
SAAO	So. Afr. Astro. Obs. (Sutherland)	-32.4	20.8			Pnn
MSO	Mt. Stromlo Observatory	-35.3	149.0			Pnn



```

target                : Jupiter
target radius (km)   : 71492.00
C/A epoch             : 2035-01-26T00:39:03.160
Event type            : Pgt
: Jupiter occs: geocentric, topocentric
: Not a ringed target
Observer code         : MCD
Location              : McDonald Obs. 2.7m
Latitude (deg)       : 30.67158
E. Longitude (deg)   : 255.97844
Altitude (km)        : 2.075
Gaia source ID       : 2550538089320422528
2Mass ID (if available) : 00341608+0223337
ICRS Star Coord at Epoch: 00h 34m 16.10727s +02:23:33.67179s
RUWE (>1.4 is poor) : 1.03
K magnitude           : 9.628
G magnitude           : 10.863
RP magnitude          : 10.427
BP magnitude          : 11.135
DUPflag              : 0
Distance (au)        : 5.315
f0 (km)               : 0.00
g0 (km)               : 0.00
skyplane vel. (km/s) : 26.85
Sun-Target sep (deg) : 63.44
Sun-Moon sep (deg)   : 146.01
B (ring opening deg) : 2.34
PA of pole (deg)     : -25.07
Pole direction: RA (deg): 268.05640
Dec (deg): 64.49677
C/A sky separation (" ) : 11.894
C/A sky separation (km) : 45846.9
NAIF SPICE kernels   : RAJobs_U111+rgf15.spk
URKALLv1.spk
naif0012.tls
nep097.bsp
nep101.bsp
sat4401.bsp
de440.bsp
earth_720101_070426.bpc
jup365.bsp
urall6.bsp
IAU_SATURN_for_RINGFIT.tpc
pck00010.tpc
earth_200101_990628_predict.bpc
uranus_ringframes_rfrench20220627_v1.tf
neptune_ringframes_rfrench20220702a_v1.tf
earth_flat_IAU.spk
    
```

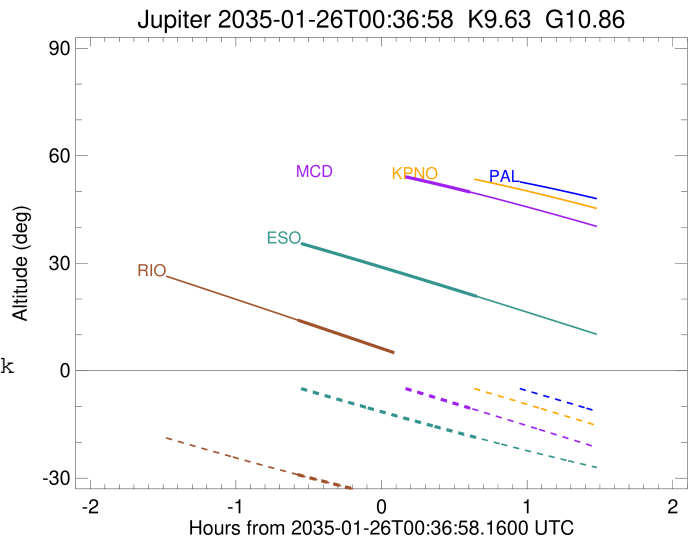
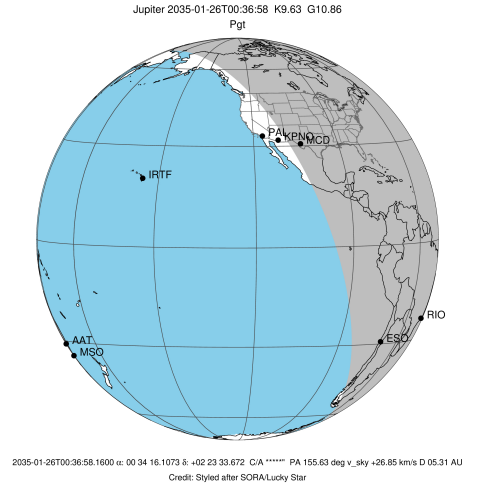


x: target alt < 5.0 deg or sun > -5.0 deg

Target	I/E	UTC	alt	alt-sun	radius	lat-geo	lat-geodetic
Jupiter	I	2035-01-26T00:04:33.450	59.40	3.48x	71489.0	39.48	43.18
Jupiter	E	2035-01-26T01:13:30.413	49.85	-10.47	71488.9	40.25	43.96

```

target                : Jupiter
target radius (km)   : 71492.00
C/A epoch            : 2035-01-26T00:39:38.010
Event type          : Pgt
                    : Jupiter occs: geocentric, topocentric
                    : Not a ringed target
Observer code       : RIO
Location            : Rio de Janeiro
Latitude (deg)      : -22.89506
E. Longitude (deg)  : 316.77708
Altitude (km)       : 0.033
Gaia source ID      : 2550538089320422528
2Mass ID (if available) : 00341608+0223337
ICRS Star Coord at Epoch: 00h 34m 16.10727s +02:23:33.67179s
RUWE (>1.4 is poor) : 1.03
K magnitude          : 9.628
G magnitude          : 10.863
RP magnitude         : 10.427
BP magnitude         : 11.135
DUPflag             : 0
Distance (au)       : 5.315
f0 (km)              : 0.00
g0 (km)              : 0.00
skyplane vel. (km/s) : 26.85
Sun-Target sep (deg) : 63.44
Sun-Moon sep (deg)  : 145.84
B (ring opening deg) : 2.34
PA of pole (deg)    : -25.07
Pole direction: RA (deg): 268.05640
Dec (deg): 64.49677
C/A sky separation (") : 10.189
C/A sky separation (km) : 39275.8
NAIF SPICE kernels  : RAJobs_U111+rgf15.spk
URKALLv1.spk
naif0012.tls
nep097.bsp
nep101.bsp
sat4401.bsp
de440.bsp
earth_720101_070426.bpc
jup365.bsp
urall6.bsp
IAU_SATURN_for_RINGFIT.tpc
pck00010.tpc
earth_200101_990628_predict.bpc
uranus_ringframes_rfrench20220627_v1.tf
neptune_ringframes_rfrench20220702a_v1.tf
earth_flat_IAU.spk
    
```

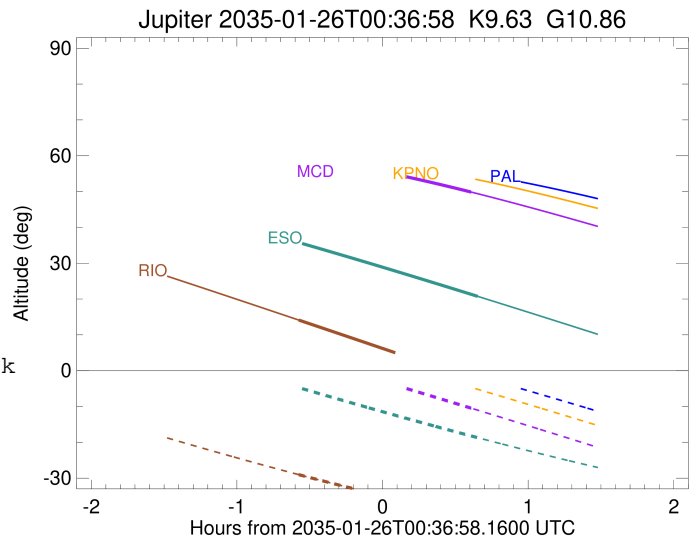
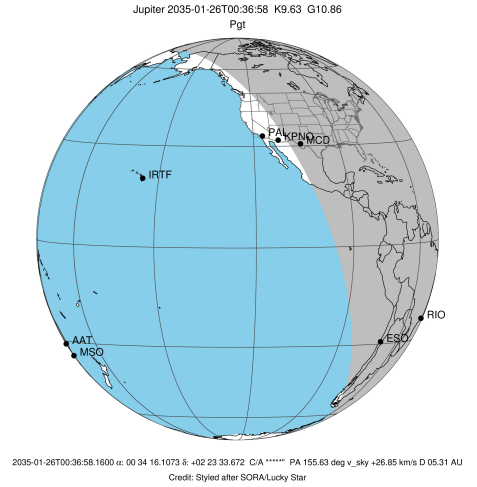


x: target alt < 5.0 deg or sun > -5.0 deg

Target	I/E	UTC	alt	alt-sun	radius	lat-geo	lat-geodetic
Jupiter	I	2035-01-26T00:02:26.497	14.13	-29.02	71489.8	32.63	36.14
Jupiter	E	2035-01-26T01:16:43.307	-2.96x	-40.72	71489.7	34.02	37.58

```

target                : Jupiter
target radius (km)   : 71492.00
C/A epoch             : 2035-01-26T00:38:47.960
Event type            : Pgt
: Jupiter occs: geocentric, topocentric
: Not a ringed target
Observer code         : ESO
Location              : European Southern Obs. (3.6m)
Latitude (deg)        : -29.26097
E. Longitude (deg)    : 289.26831
Altitude (km)         : 2.400
Gaia source ID        : 2550538089320422528
2Mass ID (if available) : 00341608+0223337
ICRS Star Coord at Epoch: 00h 34m 16.10727s +02:23:33.67179s
RUWE (>1.4 is poor) : 1.03
K magnitude           : 9.628
G magnitude           : 10.863
RP magnitude          : 10.427
BP magnitude          : 11.135
DUPflag              : 0
Distance (au)         : 5.315
f0 (km)               : 0.00
g0 (km)               : 0.00
skyplane vel. (km/s) : 26.85
Sun-Target sep (deg)  : 63.44
Sun-Moon sep (deg)    : 145.86
B (ring opening deg) : 2.34
PA of pole (deg)      : -25.07
Pole direction: RA (deg): 268.05640
Dec (deg): 64.49677
C/A sky separation (") : 10.148
C/A sky separation (km) : 39118.3
NAIF SPICE kernels   : RAJobs_U111+rgf15.spk
URKALLv1.spk
naif0012.tls
nep097.bsp
nep101.bsp
sat4401.bsp
de440.bsp
earth_720101_070426.bpc
jup365.bsp
urall6.bsp
IAU_SATURN_for_RINGFIT.tpc
pck00010.tpc
earth_200101_990628_predict.bpc
uranus_ringframes_rfrench20220627_v1.tf
neptune_ringframes_rfrench20220702a_v1.tf
earth_flat_IAU.spk
    
```



x: target alt < 5.0 deg or sun > -5.0 deg

Target	I/E	UTC	alt	alt-sun	radius	lat-geo	lat-geodetic
Jupiter	I	2035-01-26T00:01:19.528	35.98	-4.50x	71489.8	32.64	36.15
Jupiter	E	2035-01-26T01:16:11.222	20.74	-18.70	71489.7	33.69	37.24