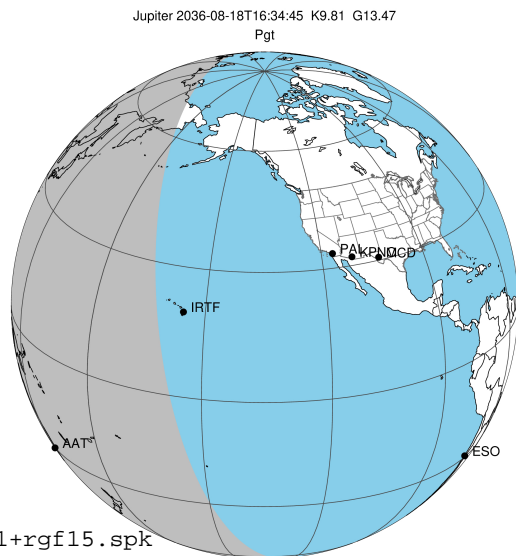


target : Jupiter
 target radius (km) : 71492.00
 C/A epoch : 2036-08-18T16:34:45.670
 Event type : Pgt
 : Jupiter occs: geocentric, topocentric
 : Not a ringed target
 Gaia source ID : 3414743607298288640
 2Mass ID (if available) : 05205110+2231105

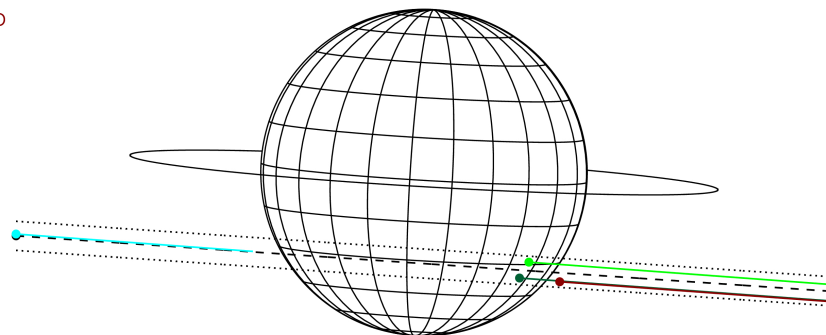
Jupiter 2036-08-18T16:34:45 K9.81 G13.47 Pgt

ICRS Star Coord at Epoch: 05h 20m 51.11494s +22:31:10.30658s
 RUWE (>1.4 is poor) : 1.54
 K magnitude : 9.815
 G magnitude : 13.467
 RP magnitude : 12.422
 BP magnitude : 14.597
 DUPflag : 0
 Distance (au) : 5.402
 f0 (km) : 0.00
 g0 (km) : 0.00
 skyplane vel. (km/s) : 25.33
 Sun-Target sep (deg) : 64.84
 Sun-Moon sep (deg) : 22.19
 B (ring opening deg) : 2.77
 PA of pole (deg) : -3.37
 Pole direction: RA (deg): 268.05634
 Dec (deg): 64.49686
 C/A sky separation (") : 10.164
 C/A sky separation (km) : 39821.0
 NAIF SPICE kernels : RAJobs_U111+rgf15.spk



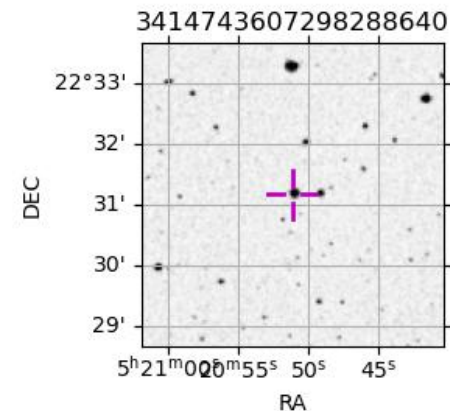
2036-08-18T16:34:45.6700 α: 05 20 51.1149 s δ: +22 31 10.307 C/A ***** PA 356.11 deg v_sky +25.33 km/s D 05.40 AU
 Credit: Styled after SORA/Lucky Star

Earth
 PMO
 IRTF
 AAT
 MSO



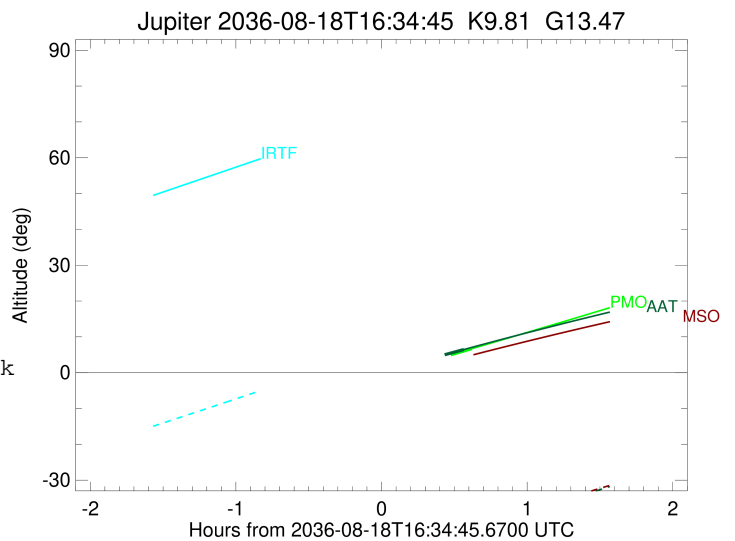
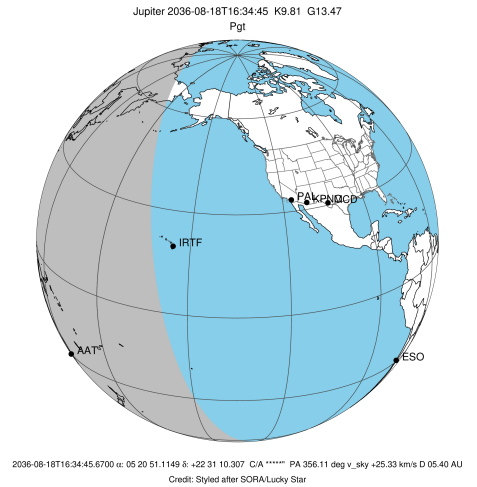
Observable events with sun below -5 deg and altitude above 5 deg

Obs	Location	lat	Elon	Target	Observed Events Interval	OCode
PIC	Pic du Midi	42.9	0.1			Pnn
PAL	Palomar Mt (200")	33.4	243.1			Pnn
PMO	Purple Mtn Obs. Nanking	32.1	118.8	+	AUG 18 17:11 - AUG 18 17:11	Pne
KPNO	Kitt Peak Natl Obs	32.0	248.4			Pnn
MCD	McDonald Obs. 2.7m	30.7	256.0			Pnn
TEN	Teide Obs./Tenerife	28.3	343.5			Pnn
IRTF	Mauna Kea/IRTF	19.8	204.5			Pnn
KAV	Kavalur Observatory	12.6	78.8			Pnn
RIO	Rio de Janeiro	-22.9	316.8			Pnn
ESO	European Southern Obs. (3.6m)	-29.3	289.3			Pnn
AAT	Siding Spring (AAT)	-31.3	149.1	+	AUG 18 17:08 - AUG 18 17:08	Pne
SAAO	So. Afr. Astro. Obs. (Sutherland)	-32.4	20.8			Pnn
MSO	Mt. Stromlo Observatory	-35.3	149.0			Pnn



```

target                : Jupiter
target radius (km)   : 71492.00
C/A epoch            : 2036-08-18T16:31:22.940
Event type           : Pgt
: Jupiter occs: geocentric, topocentric
: Not a ringed target
Observer code        : PMO
Location             : Purple Mtn Obs. Nanking
Latitude (deg)       : 32.06667
E. Longitude (deg)   : 118.82089
Altitude (km)        : 0.364
Gaia source ID       : 3414743607298288640
2Mass ID (if available) : 05205110+2231105
ICRS Star Coord at Epoch: 05h 20m 51.11494s +22:31:10.30658s
RUWE (>1.4 is poor) : 1.54
K magnitude           : 9.815
G magnitude           : 13.467
RP magnitude         : 12.422
BP magnitude         : 14.597
DUPflag              : 0
Distance (au)        : 5.402
f0 (km)               : 0.00
g0 (km)               : 0.00
skyplane vel. (km/s) : 25.33
Sun-Target sep (deg) : 64.84
Sun-Moon sep (deg)   : 22.97
B (ring opening deg) : 2.77
PA of pole (deg)     : -3.37
Pole direction: RA (deg): 268.05634
Dec (deg): 64.49686
C/A sky separation (") : 9.138
C/A sky separation (km) : 35799.0
NAIF SPICE kernels   : RAJobs_U111+rgf15.spk
URKALLv1.spk
naif0012.tls
nep097.bsp
nep101.bsp
sat4401.bsp
de440.bsp
earth_720101_070426.bpc
jup365.bsp
urall6.bsp
IAU_SATURN_for_RINGFIT.tpc
pck00010.tpc
earth_200101_990628_predict.bpc
uranus_ringframes_rfrench20220627_v1.tf
neptune_ringframes_rfrench20220702a_v1.tf
earth_flat_IAU.spk
    
```

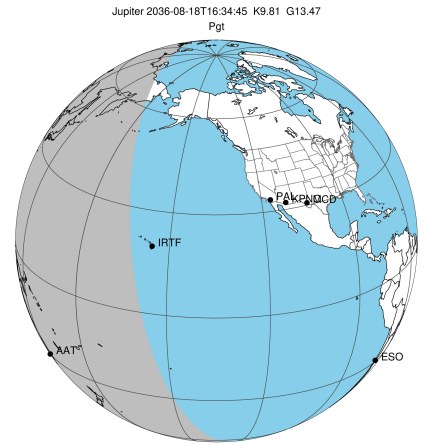


x: target alt < 5.0 deg or sun > -5.0 deg

Target	I/E	UTC	alt	alt-sun	radius	lat-geo	lat-geodetic
Jupiter	I	2036-08-18T15:50:55.433	-8.54x	-45.16	71489.5	-29.20	-32.52
Jupiter	E	2036-08-18T17:11:58.049	6.70	-42.85	71489.2	-30.85	-34.27

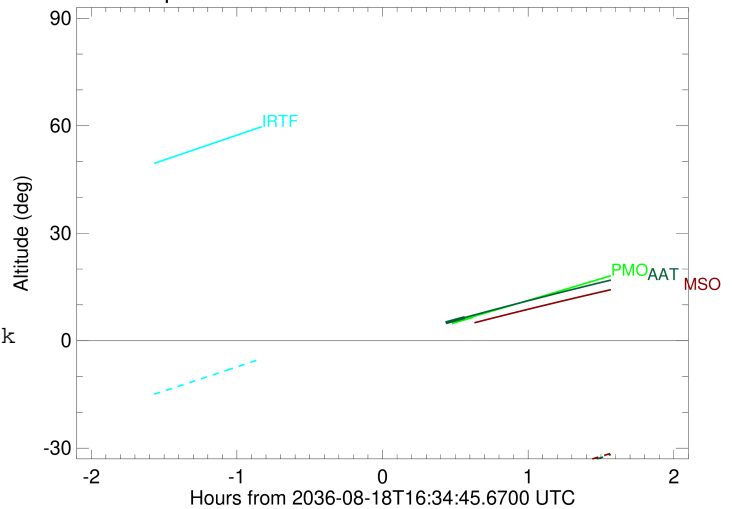
```

target                : Jupiter
target radius (km)   : 71492.00
C/A epoch             : 2036-08-18T16:30:57.430
Event type            : Pgt
: Jupiter occs: geocentric, topocentric
: Not a ringed target
Observer code         : AAT
Location              : Siding Spring (AAT)
Latitude (deg)        : -31.27703
E. Longitude (deg)    : 149.06608
Altitude (km)         : 1.164
Gaia source ID        : 3414743607298288640
2Mass ID (if available) : 05205110+2231105
ICRS Star Coord at Epoch: 05h 20m 51.11494s +22:31:10.30658s
RUWE (>1.4 is poor) : 1.54
K magnitude           : 9.815
G magnitude           : 13.467
RP magnitude          : 12.422
BP magnitude          : 14.597
DUPflag              : 0
Distance (au)         : 5.402
f0 (km)               : 0.00
g0 (km)               : 0.00
skyplane vel. (km/s) : 25.33
Sun-Target sep (deg) : 64.84
Sun-Moon sep (deg)   : 22.94
B (ring opening deg) : 2.77
PA of pole (deg)     : -3.37
Pole direction: RA (deg): 268.05634
Dec (deg): 64.49686
C/A sky separation ("): 10.978
C/A sky separation (km): 43010.3
NAIF SPICE kernels   : RAJobs_U111+rgf15.spk
URKALLv1.spk
naif0012.tls
nep097.bsp
nep101.bsp
sat4401.bsp
de440.bsp
earth_720101_070426.bpc
jup365.bsp
urall6.bsp
IAU_SATURN_for_RINGFIT.tpc
pck00010.tpc
earth_200101_990628_predict.bpc
uranus_ringframes_rfrench20220627_v1.tf
neptune_ringframes_rfrench20220702a_v1.tf
earth_flat_IAU.spk
    
```



2036-08-18T16:34:45.6700 u: 05 20 51.1149 s: +22 31 10.307 C/A ***** PA 356.11 deg v_sky +25.33 km/s D 05.40 AU
Credit: Styled after SORA/Lucky Star

Jupiter 2036-08-18T16:34:45 K9.81 G13.47



x: target alt < 5.0 deg or sun > -5.0 deg

Target	I/E	UTC	alt	alt-sun	radius	lat-geo	lat-geodetic
Jupiter	I	2036-08-18T15:53:18.782	-8.03x	-59.49	71488.4	-36.07	-39.70
Jupiter	E	2036-08-18T17:08:42.939	6.46	-44.51	71488.1	-37.80	-41.48