

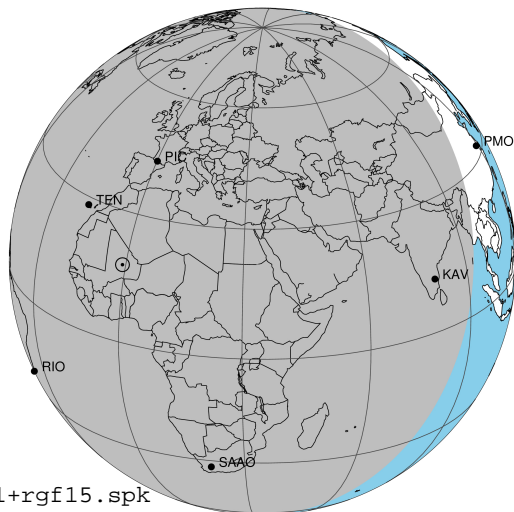
target : Jupiter
 target radius (km) : 71492.00
 C/A epoch : 2036-11-12T23:47:47.980
 Event type : Pt
 : Jupiter occs: topocentric, not geocentric
 : Not a ringed target
 Gaia source ID : 3404252823259508352
 2Mass ID (if available) : 05350426+2243274

Jupiter 2036-11-12T23:47:47 K9.51 G12.79 Pt

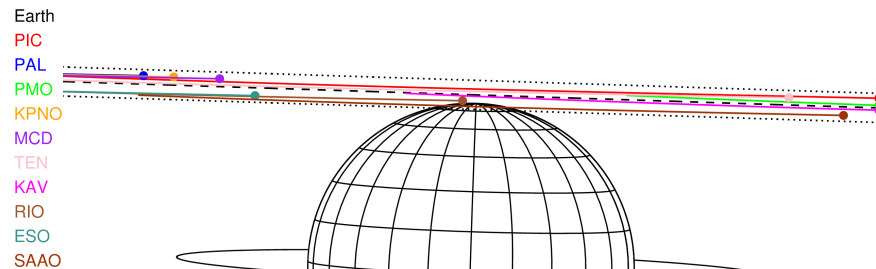
ICRS Star Coord at Epoch: 05h 35m 04.27112s +22:43:27.36309s

RUWE (>1.4 is poor) : 1.08
 K magnitude : 9.514
 G magnitude : 12.786
 RP magnitude : 11.838
 BP magnitude : 13.712
 DUPflag : 0
 Distance (au) : 4.228
 f0 (km) : 0.00
 g0 (km) : 0.00
 skyplane vel. (km/s) : -12.07
 Sun-Target sep (deg) : 146.41
 Sun-Moon sep (deg) : 81.74
 B (ring opening deg) : 2.72
 PA of pole (deg) : -1.85
 Pole direction: RA (deg): 268.05632
 Dec (deg): 64.49686
 C/A sky separation (") : 24.521
 C/A sky separation (km) : 75198.2
 NAIF SPICE kernels : RAJobs_U111+rgf15.spk

Jupiter 2036-11-12T23:47:47 K9.51 G12.79 Pt

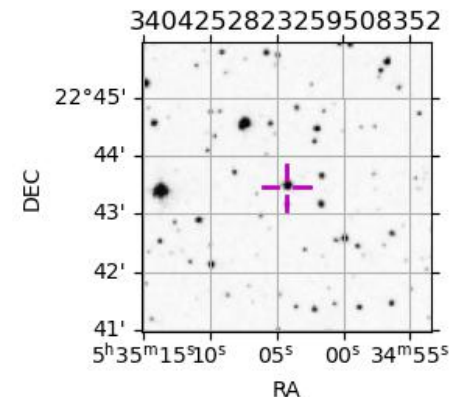


2036-11-12T23:47:47.9800 a: 05 35 04.2711 s: +22 43 27.363 C/A ***** PA 178.15 deg v_sky -12.07 km/s D 04.23 AU
 Credit: Styled after SORA/Lucky Star



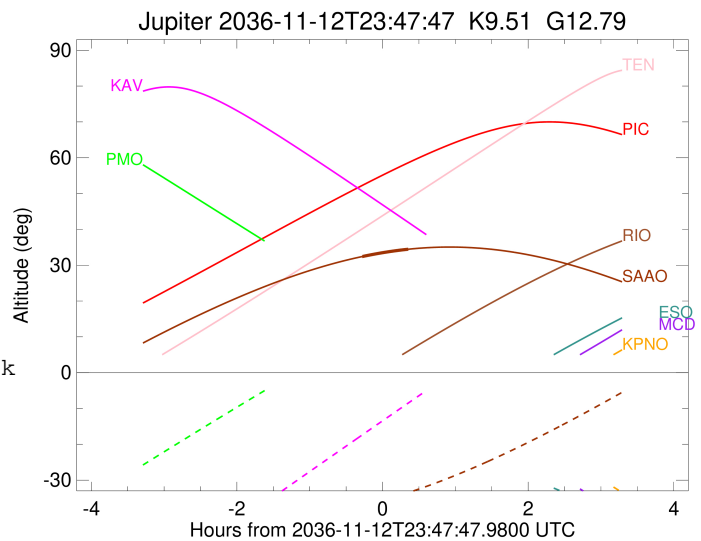
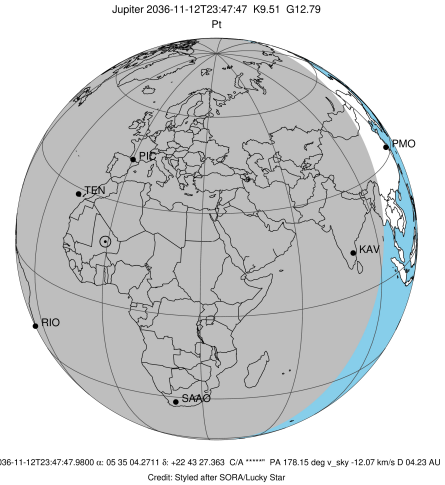
Observable events with sun below -5 deg and altitude above 5 deg

Obs	Location	lat	Elon	Target	Observed Events Interval	OCode
PIC	Pic du Midi	42.9	0.1			Pnn
PAL	Palomar Mt (200")	33.4	243.1			Pnn
PMO	Purple Mtn Obs. Nanking	32.1	118.8			Pnn
KPNO	Kitt Peak Natl Obs	32.0	248.4			Pnn
MCD	McDonald Obs. 2.7m	30.7	256.0			Pnn
TEN	Teide Obs./Tenerife	28.3	343.5			Pnn
IRTF	Mauna Kea/IRTF	19.8	204.5			Pnn
KAV	Kavalur Observatory	12.6	78.8			Pnn
RIO	Rio de Janeiro	-22.9	316.8			Pnn
ESO	European Southern Obs. (3.6m)	-29.3	289.3			Pnn
AAT	Siding Spring (AAT)	-31.3	149.1			Pnn
SAAO	So. Afr. Astro. Obs. (Sutherland)	-32.4	20.8	+ +	NOV 12 23:31 - NOV 13 00:08	Pie
MSO	Mt. Stromlo Observatory	-35.3	149.0			Pnn



```

target                : Jupiter
target radius (km)   : 71492.00
C/A epoch             : 2036-11-12T23:50:04.280
Event type            : Pt
: Jupiter occs: topocentric, not geocentric
: Not a ringed target
Observer code         : SAAO
Location              : So. Afr. Astro. Obs. (Sutherland)
Latitude (deg)       : -32.37953
E. Longitude (deg)   : 20.81070
Altitude (km)        : 1.768
Gaia source ID       : 3404252823259508352
2Mass ID (if available) : 05350426+2243274
ICRS Star Coord at Epoch: 05h 35m 04.27112s +22:43:27.36309s
RUWE (>1.4 is poor) : 1.08
K magnitude           : 9.514
G magnitude           : 12.786
RP magnitude          : 11.838
BP magnitude          : 13.712
DUPflag              : 0
Distance (au)        : 4.228
f0 (km)              : 0.00
g0 (km)              : 0.00
skyplane vel. (km/s) : -12.07
Sun-Target sep (deg) : 146.41
Sun-Moon sep (deg)   : 82.31
B (ring opening deg) : 2.72
PA of pole (deg)     : -1.85
Pole direction: RA (deg): 268.05632
Dec (deg): 64.49686
C/A sky separation (") : 22.851
C/A sky separation (km) : 70074.1
NAIF SPICE kernels   : RAJobs_U111+rgf15.spk
URKALLv1.spk
naif0012.tls
nep097.bsp
nep101.bsp
sat4401.bsp
de440.bsp
earth_720101_070426.bpc
jup365.bsp
urall6.bsp
IAU_SATURN_for_RINGFIT.tpc
pck00010.tpc
earth_200101_990628_predict.bpc
uranus_ringframes_rfrench20220627_v1.tf
neptune_ringframes_rfrench20220702a_v1.tf
earth_flat_IAU.spk
    
```



x: target alt < 5.0 deg or sun > -5.0 deg

Target	I/E	UTC	alt	alt-sun	radius	lat-geo	lat-geodetic
Jupiter	I	2036-11-12T23:31:12.643	32.42	-37.01	71482.3	78.52	79.85
Jupiter	E	2036-11-13T00:08:54.856	34.45	-33.49	71482.3	78.12	79.50