

target : Jupiter
 target radius (km) : 71492.00
 C/A epoch : 2036-12-04T06:13:24.860
 Event type : Pt
 : Jupiter occs: topocentric, not geocentric
 : Not a ringed target
 Gaia source ID : 3416069347739808896
 2Mass ID (if available) : 05241827+2237312

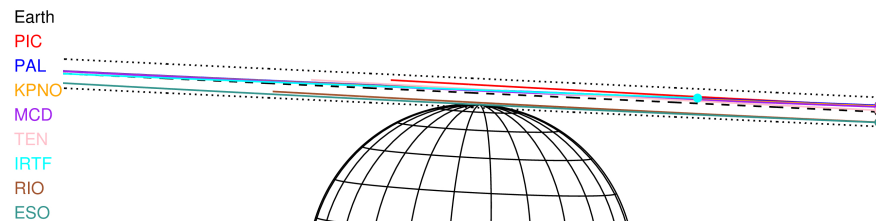
Jupiter 2036-12-04T06:13:24 K9.86 G13.61 Pt

ICRS Star Coord at Epoch: 05h 24m 18.26608s +22:37:31.11524s

RUWE (>1.4 is poor) : 1.06
 K magnitude : 9.863
 G magnitude : 13.613
 RP magnitude : 12.567
 BP magnitude : 14.740
 DUPflag : 0
 Distance (au) : 4.115
 f0 (km) : 0.00
 g0 (km) : 0.00
 skyplane vel. (km/s) : -16.51
 Sun-Target sep (deg) : 170.38
 Sun-Moon sep (deg) : 3.34
 B (ring opening deg) : 2.71
 PA of pole (deg) : -3.00
 Pole direction: RA (deg): 268.05632
 Dec (deg): 64.49687
 C/A sky separation (") : 25.615
 C/A sky separation (km) : 76445.6
 NAIF SPICE kernels : RAJobs_U111+rgf15.spk

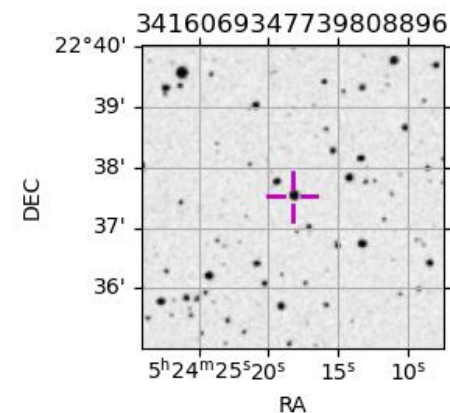


2036-12-04T06:13:24.8600 a: 05 24 18.2661 s: +22 37 31.115 C/A ***** PA 177.31 deg v_sky -16.51 km/s D 04.11 AU
 Credit: Styled after SORA/Lucky Star



Observable events with sun below -5 deg and altitude above 5 deg

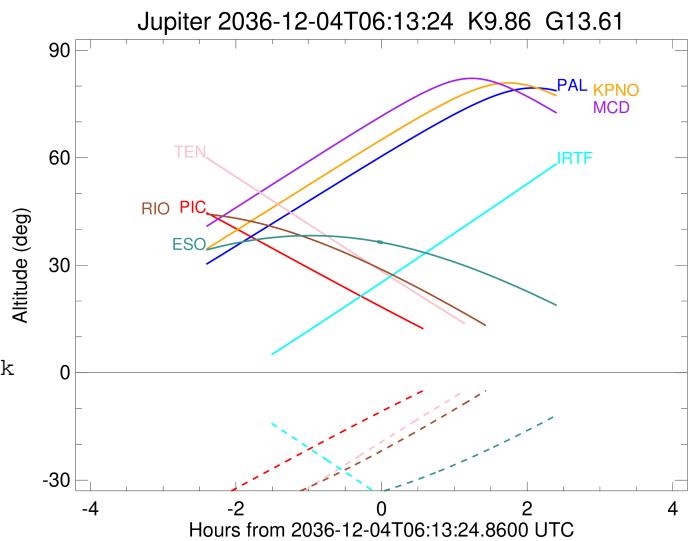
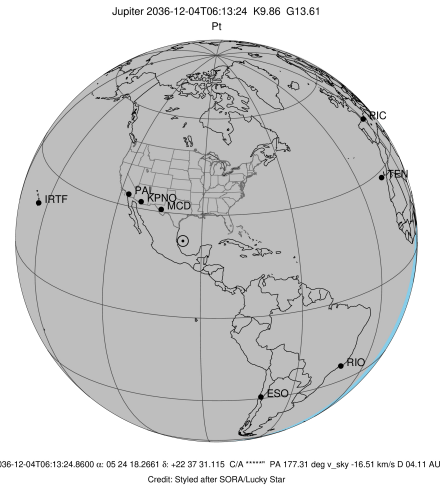
Obs	Location	lat	Elon	Target	Observed Events Interval	OCode
PIC	Pic du Midi	42.9	0.1			Pnn
PAL	Palomar Mt (200")	33.4	243.1			Pnn
PMO	Purple Mtn Obs. Nanking	32.1	118.8			Pnn
KPNO	Kitt Peak Natl Obs	32.0	248.4			Pnn
MCD	McDonald Obs. 2.7m	30.7	256.0			Pnn
TEN	Teide Obs./Tenerife	28.3	343.5			Pnn
IRTF	Mauna Kea/IRTF	19.8	204.5			Pnn
KAV	Kavalur Observatory	12.6	78.8			Pnn
RIO	Rio de Janeiro	-22.9	316.8			Pnn
ESO	European Southern Obs. (3.6m)	-29.3	289.3	+ +	DEC 04 06:10 - DEC 04 06:14	Pie
AAT	Siding Spring (AAT)	-31.3	149.1			Pnn
SAAO	So. Afr. Astro. Obs. (Sutherland)	-32.4	20.8			Pnn
MSO	Mt. Stromlo Observatory	-35.3	149.0			Pnn



3416069347739808896

```

target                : Jupiter
target radius (km)   : 71492.00
C/A epoch            : 2036-12-04T06:12:08.780
Event type          : Pt
                    : Jupiter occs: topocentric, not geocentric
                    : Not a ringed target
Observer code       : ESO
Location            : European Southern Obs. (3.6m)
Latitude (deg)      : -29.26097
E. Longitude (deg)  : 289.26831
Altitude (km)       : 2.400
Gaia source ID      : 3416069347739808896
2Mass ID (if available) : 05241827+2237312
ICRS Star Coord at Epoch: 05h 24m 18.26608s +22:37:31.11524s
RUWE (>1.4 is poor) : 1.06
K magnitude         : 9.863
G magnitude         : 13.613
RP magnitude        : 12.567
BP magnitude        : 14.740
DUPflag            : 0
Distance (au)       : 4.115
f0 (km)             : 0.00
g0 (km)             : 0.00
skyplane vel. (km/s) : -16.51
Sun-Target sep (deg) : 170.38
Sun-Moon sep (deg)  : 2.69
B (ring opening deg) : 2.71
PA of pole (deg)    : -3.00
Pole direction: RA (deg): 268.05632
Dec (deg): 64.49687
C/A sky separation (" ) : 23.942
C/A sky separation (km) : 71450.7
NAIF SPICE kernels  : RAJobs_U111+rgf15.spk
URKALLv1.spk
naif0012.tls
nep097.bsp
nep101.bsp
sat4401.bsp
de440.bsp
earth_720101_070426.bpc
jup365.bsp
urall6.bsp
IAU_SATURN_for_RINGFIT.tpc
pck00010.tpc
earth_200101_990628_predict.bpc
uranus_ringframes_rfrench20220627_v1.tf
neptune_ringframes_rfrench20220702a_v1.tf
earth_flat_IAU.spk
    
```



x: target alt < 5.0 deg or sun > -5.0 deg

Target	I/E	UTC	alt	alt-sun	radius	lat-geo	lat-geodetic
Jupiter	I	2036-12-04T06:10:03.968	36.57	-33.55	71481.9	86.92	87.28
Jupiter	E	2036-12-04T06:14:13.605	36.31	-33.13	71481.9	86.67	87.06