

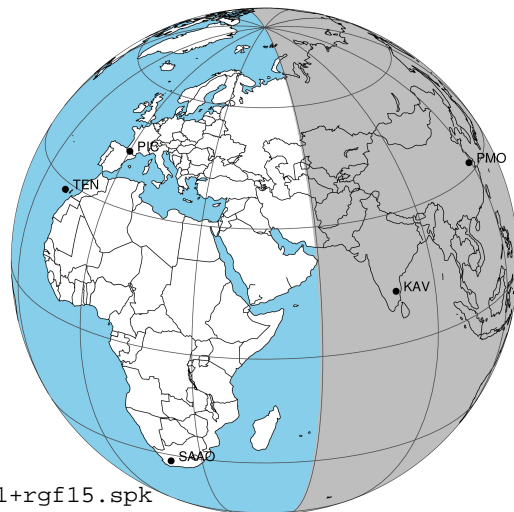
target : Jupiter  
 target radius (km) : 71492.00  
 C/A epoch : 2037-03-20T14:09:52.370  
 Event type : Pgt  
 : Jupiter occs: geocentric, topocentric  
 : Not a ringed target  
 Gaia source ID : 3415360639479085440  
 2Mass ID (if available) : 05082210+2238581

Jupiter 2037-03-20T14:09:52 K8.51 G11.73 Pgt

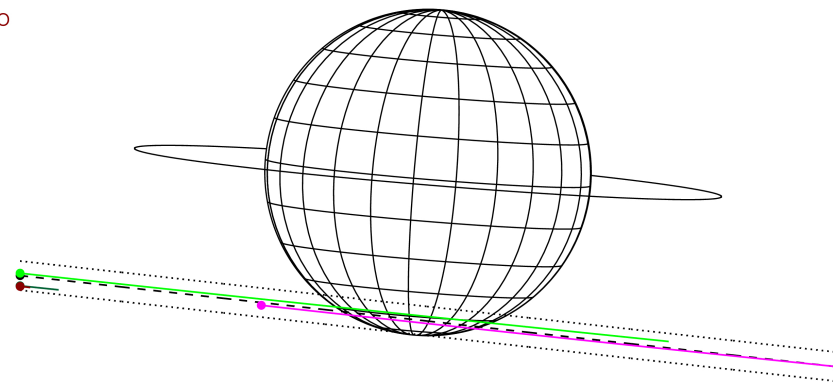
ICRS Star Coord at Epoch: 05h 08m 22.11266s +22:38:57.96115s

RUWE (>1.4 is poor) : 1.01  
 K magnitude : 8.508  
 G magnitude : 11.735  
 RP magnitude : 10.817  
 BP magnitude : 12.608  
 DUPflag : 0  
 Distance (au) : 5.234  
 f0 (km) : 0.00  
 g0 (km) : 0.00  
 skyplane vel. (km/s) : 18.71  
 Sun-Target sep (deg) : 78.31  
 Sun-Moon sep (deg) : 38.37  
 B (ring opening deg) : 2.44  
 PA of pole (deg) : -4.70  
 Pole direction: RA (deg): 268.05629  
 Dec (deg): 64.49688  
 C/A sky separation (") : 17.049  
 C/A sky separation (km) : 64712.1  
 NAIF SPICE kernels : RAJobs\_U111+rgf15.spk

Jupiter 2037-03-20T14:09:52 K8.51 G11.73  
 Pgt



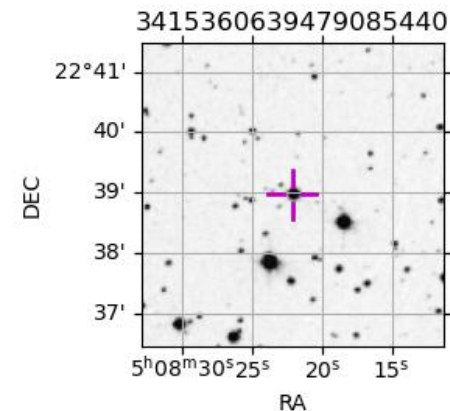
Earth  
 PMO  
 KAV  
 AAT  
 MSO



2037-03-20T14:09:52.3700 α: 05 08 22.1127 δ: +22 38 57.961 C/A \*\*\*\*\* PA 353.63 deg v\_sky +18.71 km/s D 05.23 AU  
 Credit: Styled after SORA/Lucky Star

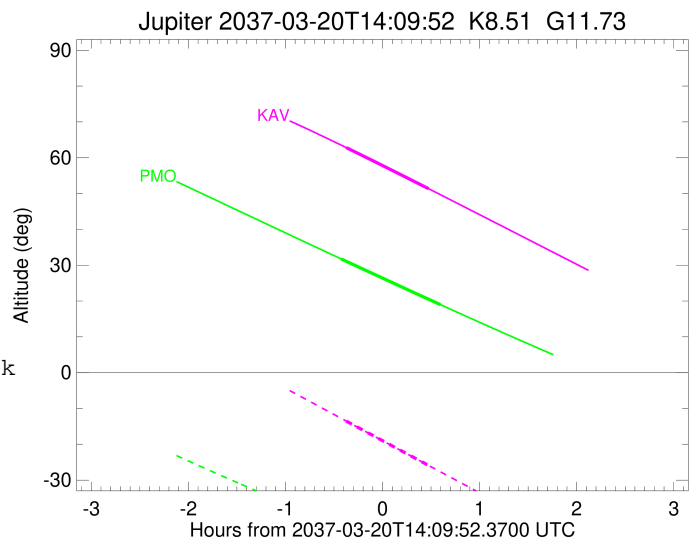
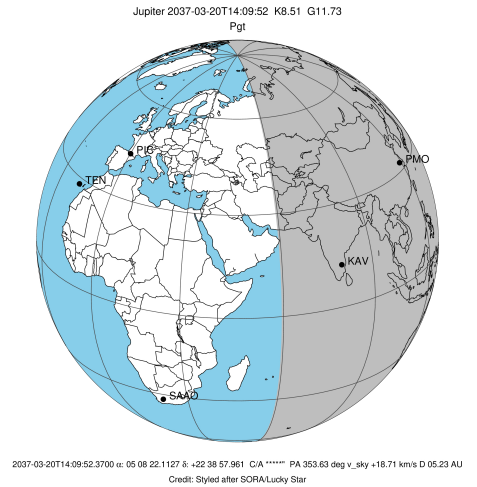
Observable events with sun below -5 deg and altitude above 5 deg

Obs	Location	lat	Elon	Target	Observed Events Interval	OCode
PIC	Pic du Midi	42.9	0.1			Pnn
PAL	Palomar Mt (200")	33.4	243.1			Pnn
PMO	Purple Mtn Obs. Nanking	32.1	118.8	+ +	MAR 20 13:44 - MAR 20 14:45	Pie
KPNO	Kitt Peak Natl Obs	32.0	248.4			Pnn
MCD	McDonald Obs. 2.7m	30.7	256.0			Pnn
TEN	Teide Obs./Tenerife	28.3	343.5			Pnn
IRTF	Mauna Kea/IRTF	19.8	204.5			Pnn
KAV	Kavalur Observatory	12.6	78.8	+ +	MAR 20 13:47 - MAR 20 14:38	Pie
RIO	Rio de Janeiro	-22.9	316.8			Pnn
ESO	European Southern Obs. (3.6m)	-29.3	289.3			Pnn
AAT	Siding Spring (AAT)	-31.3	149.1			Pnn
SAAO	So. Afr. Astro. Obs. (Sutherland)	-32.4	20.8			Pnn
MSO	Mt. Stromlo Observatory	-35.3	149.0			Pnn



```

target                : Jupiter
target radius (km)   : 71492.00
C/A epoch            : 2037-03-20T14:15:06.210
Event type          : Pgt
                    : Jupiter occs: geocentric, topocentric
                    : Not a ringed target
Observer code       : PMO
Location            : Purple Mtn Obs. Nanking
Latitude (deg)      : 32.06667
E. Longitude (deg)  : 118.82089
Altitude (km)       : 0.364
Gaia source ID      : 3415360639479085440
2Mass ID (if available) : 05082210+2238581
ICRS Star Coord at Epoch: 05h 08m 22.11266s +22:38:57.96115s
RUWE (>1.4 is poor) : 1.01
K magnitude          : 8.508
G magnitude          : 11.735
RP magnitude         : 10.817
BP magnitude         : 12.608
DUPflag             : 0
Distance (au)       : 5.234
f0 (km)             : 0.00
g0 (km)             : 0.00
skyplane vel. (km/s) : 18.71
Sun-Target sep (deg) : 78.31
Sun-Moon sep (deg)  : 39.25
B (ring opening deg) : 2.44
PA of pole (deg)    : -4.70
Pole direction: RA (deg): 268.05629
Dec (deg): 64.49688
C/A sky separation (" ) : 16.538
C/A sky separation (km) : 62773.0
NAIF SPICE kernels  : RAJobs_U111+rgf15.spk
URKALLv1.spk
naif0012.tls
nep097.bsp
nep101.bsp
sat4401.bsp
de440.bsp
earth_720101_070426.bpc
jup365.bsp
urall6.bsp
IAU_SATURN_for_RINGFIT.tpc
pck00010.tpc
earth_200101_990628_predict.bpc
uranus_ringframes_rfrench20220627_v1.tf
neptune_ringframes_rfrench20220702a_v1.tf
earth_flat_IAU.spk
    
```

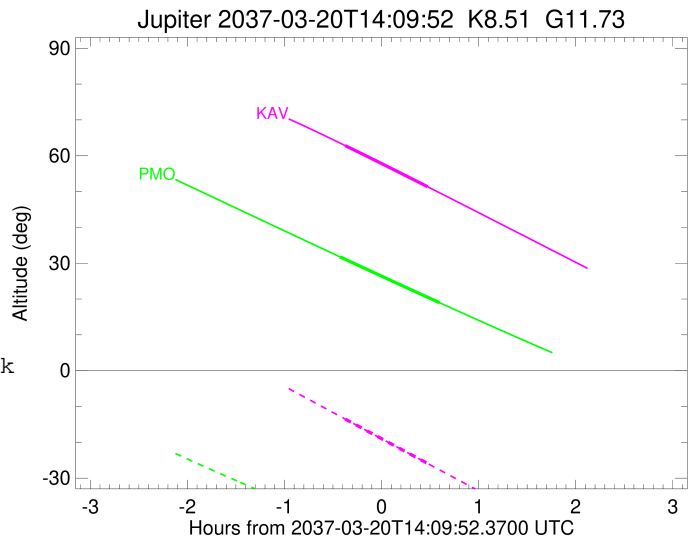
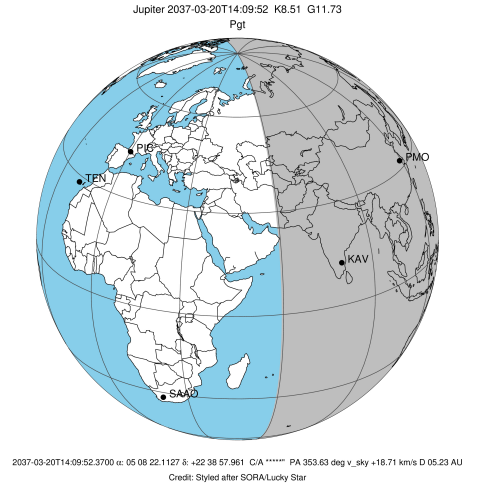


x: target alt < 5.0 deg or sun > -5.0 deg

Target	I/E	UTC	alt	alt-sun	radius	lat-geo	lat-geodetic
Jupiter	I	2037-03-20T13:44:22.200	31.74	-42.68	71485.9	-60.05	-63.11
Jupiter	E	2037-03-20T14:45:44.027	18.98	-52.04	71485.6	-62.55	-65.43

```

target                : Jupiter
target radius (km)   : 71492.00
C/A epoch             : 2037-03-20T14:12:58.060
Event type           : Pgt
: Jupiter occs: geocentric, topocentric
: Not a ringed target
Observer code        : KAV
Location             : Kavalur Observatory
Latitude (deg)       : 12.57556
E. Longitude (deg)   : 78.83167
Altitude (km)        : 0.722
Gaia source ID       : 3415360639479085440
2Mass ID (if available) : 05082210+2238581
ICRS Star Coord at Epoch: 05h 08m 22.11266s +22:38:57.96115s
RUWE (>1.4 is poor) : 1.01
K magnitude           : 8.508
G magnitude           : 11.735
RP magnitude          : 10.817
BP magnitude          : 12.608
DUPflag              : 0
Distance (au)        : 5.234
f0 (km)              : 0.00
g0 (km)              : 0.00
skyplane vel. (km/s) : 18.71
Sun-Target sep (deg) : 78.31
Sun-Moon sep (deg)   : 39.21
B (ring opening deg) : 2.44
PA of pole (deg)     : -4.70
Pole direction: RA (deg): 268.05629
Dec (deg): 64.49688
C/A sky separation (") : 17.339
C/A sky separation (km) : 65814.5
NAIF SPICE kernels   : RAJobs_U111+rgf15.spk
URKALLv1.spk
naif0012.tls
nep097.bsp
nep101.bsp
sat4401.bsp
de440.bsp
earth_720101_070426.bpc
jup365.bsp
urall6.bsp
IAU_SATURN_for_RINGFIT.tpc
pck00010.tpc
earth_200101_990628_predict.bpc
uranus_ringframes_rfrench20220627_v1.tf
neptune_ringframes_rfrench20220702a_v1.tf
earth_flat_IAU.spk
    
```



x: target alt < 5.0 deg or sun > -5.0 deg

Target	I/E	UTC	alt	alt-sun	radius	lat-geo	lat-geodetic
Jupiter	I	2037-03-20T13:47:32.134	62.80	-13.54	71485.3	-65.38	-68.03
Jupiter	E	2037-03-20T14:38:21.023	51.35	-25.89	71485.0	-68.36	-70.74