

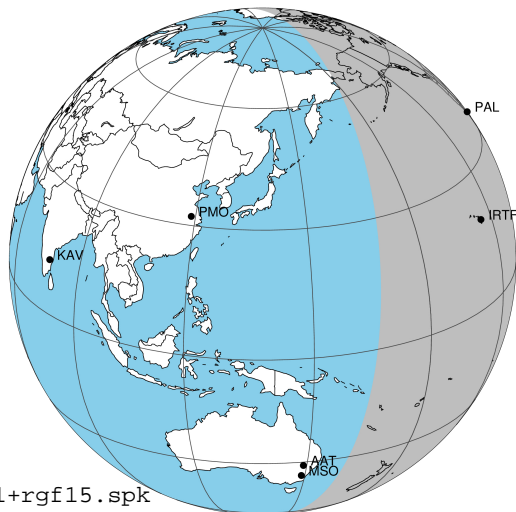
target : Jupiter
 target radius (km) : 71492.00
 C/A epoch : 2037-04-08T07:01:24.150
 Event type : Pgt
 : Jupiter occs: geocentric, topocentric
 : Not a ringed target
 Gaia source ID : 3414838203954001536
 2Mass ID (if available) : 05193744+2254130

Jupiter 2037-04-08T07:01:24 K9.21 G13.13 Pgt

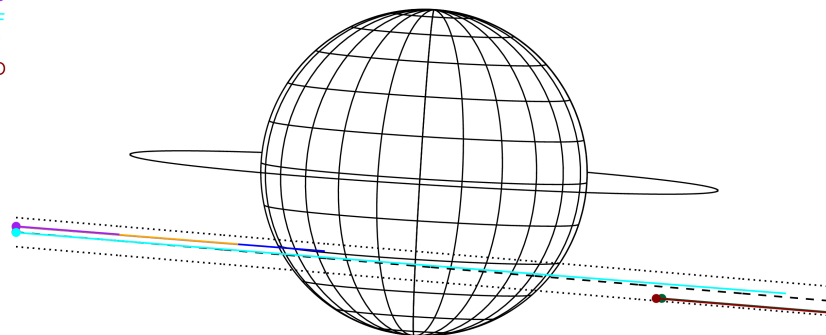
ICRS Star Coord at Epoch: 05h 19m 37.45131s +22:54:12.98307s

RUWE (>1.4 is poor) : 1.02
 K magnitude : 9.205
 G magnitude : 13.131
 RP magnitude : 12.069
 BP magnitude : 14.305
 DUPflag : 0
 Distance (au) : 5.518
 f0 (km) : 0.00
 g0 (km) : 0.00
 skyplane vel. (km/s) : 26.45
 Sun-Target sep (deg) : 62.44
 Sun-Moon sep (deg) : 143.32
 B (ring opening deg) : 2.37
 PA of pole (deg) : -3.50
 Pole direction: RA (deg): 268.05629
 Dec (deg): 64.49688
 C/A sky separation (") : 10.266
 C/A sky separation (km) : 41085.3
 NAIF SPICE kernels : RAJobs_U111+rgf15.spk

Jupiter 2037-04-08T07:01:24 K9.21 G13.13
 Pgt



Earth
 PAL
 KPNO
 MCD
 IRTF
 AAT
 MSO

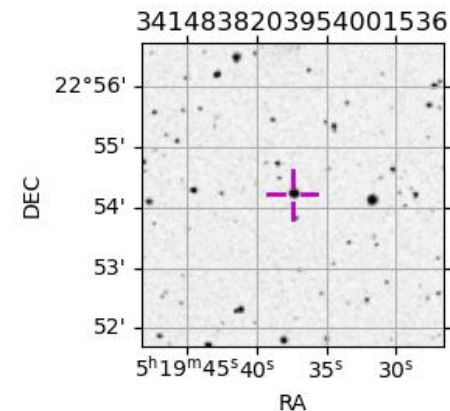


2037-04-08T07:01:24.1500 α: 05 19 37.4513 δ: +22 54 12.983 C/A ***** PA 355.17 deg v_sky +26.45 km/s D 05.52 AU

Credit: Styled after SORA/Lucky Star

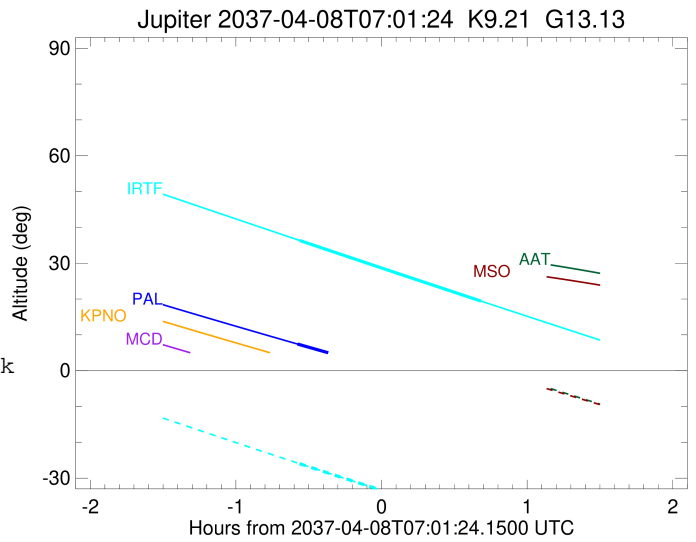
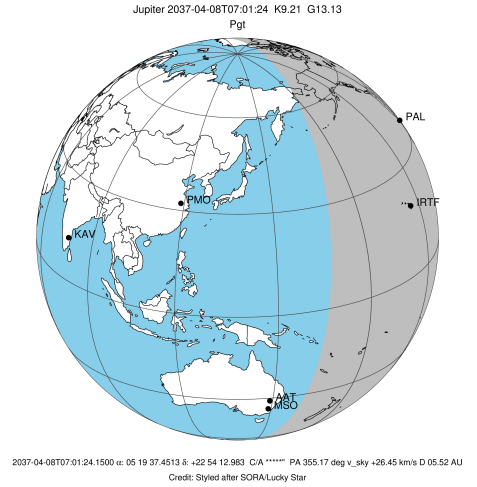
Observable events with sun below -5 deg and altitude above 5 deg

Obs	Location	lat	Elon	Target	Observed Events Interval	OCode
PIC	Pic du Midi	42.9	0.1			Pnn
PAL	Palomar Mt (200")	33.4	243.1	+	APR 08 06:26 - APR 08 06:26	Pin
PMO	Purple Mtn Obs. Nanking	32.1	118.8			Pnn
KPNO	Kitt Peak Natl Obs	32.0	248.4			Pnn
MCD	McDonald Obs. 2.7m	30.7	256.0			Pnn
TEN	Teide Obs./Tenerife	28.3	343.5			Pnn
IRTF	Mauna Kea/IRTF	19.8	204.5	+ +	APR 08 06:27 - APR 08 07:42	Pie
KAV	Kavalur Observatory	12.6	78.8			Pnn
RIO	Rio de Janeiro	-22.9	316.8			Pnn
ESO	European Southern Obs. (3.6m)	-29.3	289.3			Pnn
AAT	Siding Spring (AAT)	-31.3	149.1			Pnn
SAAO	So. Afr. Astro. Obs. (Sutherland)	-32.4	20.8			Pnn
MSO	Mt. Stromlo Observatory	-35.3	149.0			Pnn



```

target                : Jupiter
target radius (km)   : 71492.00
C/A epoch            : 2037-04-08T07:04:57.310
Event type           : Pgt
: Jupiter occs: geocentric, topocentric
: Not a ringed target
Observer code        : PAL
Location             : Palomar Mt (200")
Latitude (deg)       : 33.35622
E. Longitude (deg)   : 243.13601
Altitude (km)        : 1.706
Gaia source ID       : 3414838203954001536
2Mass ID (if available) : 05193744+2254130
ICRS Star Coord at Epoch: 05h 19m 37.45131s +22:54:12.98307s
RUWE (>1.4 is poor) : 1.02
K magnitude          : 9.205
G magnitude           : 13.131
RP magnitude         : 12.069
BP magnitude         : 14.305
DUPflag              : 0
Distance (au)        : 5.518
f0 (km)              : 0.00
g0 (km)              : 0.00
skyplane vel. (km/s) : 26.45
Sun-Target sep (deg) : 62.44
Sun-Moon sep (deg)   : 142.71
B (ring opening deg) : 2.37
PA of pole (deg)     : -3.50
Pole direction: RA (deg): 268.05629
Dec (deg): 64.49688
C/A sky separation ("): 9.428
C/A sky separation (km): 37731.7
NAIF SPICE kernels   : RAJobs_U111+rgf15.spk
URKALLv1.spk
naif0012.tls
nep097.bsp
nep101.bsp
sat4401.bsp
de440.bsp
earth_720101_070426.bpc
jup365.bsp
urall6.bsp
IAU_SATURN_for_RINGFIT.tpc
pck00010.tpc
earth_200101_990628_predict.bpc
uranus_ringframes_rfrench20220627_v1.tf
neptune_ringframes_rfrench20220702a_v1.tf
earth_flat_IAU.spk
    
```

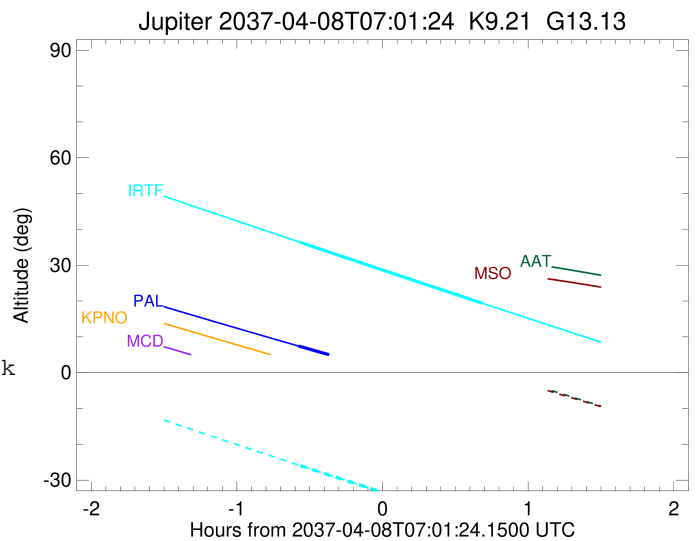
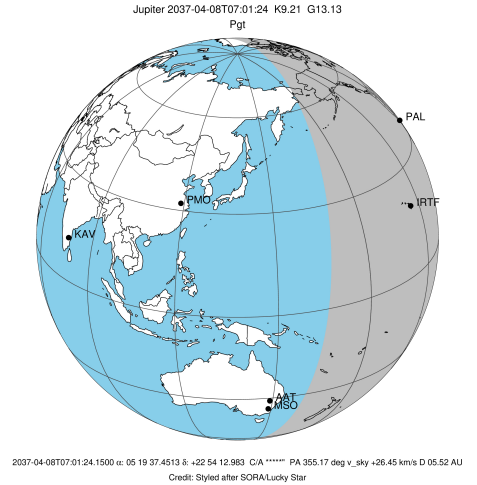


x: target alt < 5.0 deg or sun > -5.0 deg

Target	I/E	UTC	alt	alt-sun	radius	lat-geo	lat-geodetic
Jupiter	I	2037-04-08T06:26:46.475	7.44	-44.99	71490.0	-30.84	-34.25
Jupiter	E	2037-04-08T07:43:01.651	-6.70x	-49.43	71489.7	-32.82	-36.33

```

target                : Jupiter
target radius (km)   : 71492.00
C/A epoch             : 2037-04-08T07:05:04.470
Event type            : Pgt
: Jupiter occs: geocentric, topocentric
: Not a ringed target
Observer code         : IRTF
Location              : Mauna Kea/IRTF
Latitude (deg)        : 19.82622
E. Longitude (deg)    : 204.52800
Altitude (km)         : 4.168
Gaia source ID        : 3414838203954001536
2Mass ID (if available) : 05193744+2254130
ICRS Star Coord at Epoch: 05h 19m 37.45131s +22:54:12.98307s
RUWE (>1.4 is poor) : 1.02
K magnitude           : 9.205
G magnitude           : 13.131
RP magnitude          : 12.069
BP magnitude          : 14.305
DUPflag              : 0
Distance (au)         : 5.518
f0 (km)               : 0.00
g0 (km)               : 0.00
skyplane vel. (km/s) : 26.45
Sun-Target sep (deg) : 62.44
Sun-Moon sep (deg)   : 142.95
B (ring opening deg) : 2.37
PA of pole (deg)     : -3.50
Pole direction: RA (deg): 268.05629
Dec (deg): 64.49688
C/A sky separation ("): 10.110
C/A sky separation (km): 40459.0
NAIF SPICE kernels   : RAJobs_U111+rgf15.spk
URKALLv1.spk
naif0012.tls
nep097.bsp
nep101.bsp
sat4401.bsp
de440.bsp
earth_720101_070426.bpc
jup365.bsp
urall6.bsp
IAU_SATURN_for_RINGFIT.tpc
pck00010.tpc
earth_200101_990628_predict.bpc
uranus_ringframes_rfrench20220627_v1.tf
neptune_ringframes_rfrench20220702a_v1.tf
earth_flat_IAU.spk
    
```



x: target alt < 5.0 deg or sun > -5.0 deg

Target	I/E	UTC	alt	alt-sun	radius	lat-geo	lat-geodetic
Jupiter	I	2037-04-08T06:27:37.013	36.36	-25.96	71489.7	-33.41	-36.94
Jupiter	E	2037-04-08T07:42:25.291	19.42	-41.98	71489.4	-35.43	-39.04