

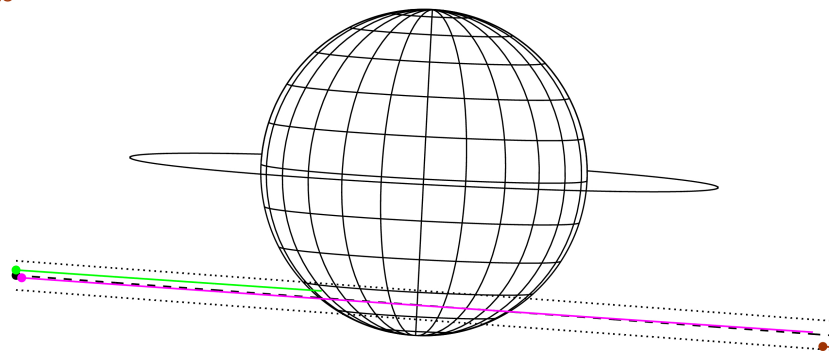
target : Jupiter
 target radius (km) : 71492.00
 C/A epoch : 2037-04-15T14:50:46.360
 Event type : Pgt
 : Jupiter occs: geocentric, topocentric
 : Not a ringed target
 Gaia source ID : 3416109303818953216
 2Mass ID (if available) : 05245198+2259531

Jupiter 2037-04-15T14:50:46 K8.01 G10.52 Pgt

ICRS Star Coord at Epoch: 05h 24m 52.00064s +22:59:52.01360s
 RUWE (>1.4 is poor) : 1.22
 K magnitude : 8.011
 G magnitude : 10.523
 RP magnitude : 9.694
 BP magnitude : 11.171
 DUPflag : 0
 Distance (au) : 5.620
 f0 (km) : 0.00
 g0 (km) : 0.00
 skyplane vel. (km/s) : 29.14
 Sun-Target sep (deg) : 56.46
 Sun-Moon sep (deg) : 57.18
 B (ring opening deg) : 2.34
 PA of pole (deg) : -2.94
 Pole direction: RA (deg): 268.05629
 Dec (deg): 64.49688
 C/A sky separation (") : 14.249
 C/A sky separation (km) : 58083.9
 NAIF SPICE kernels : RAJobs_U111+rgf15.spk



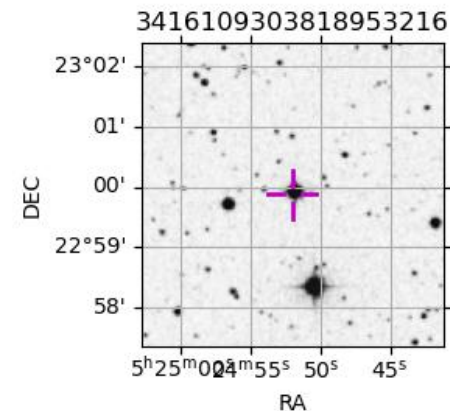
Earth
 PMO
 KAV
 SAAO



2037-04-15T14:50:46.3600 α: 05 24 52.00066 δ: +22 59 52.014 C/A ***** PA 355.79 deg v_sky +29.14 km/s D 05.62 AU
 Credit: Styled after SORA/Lucky Star

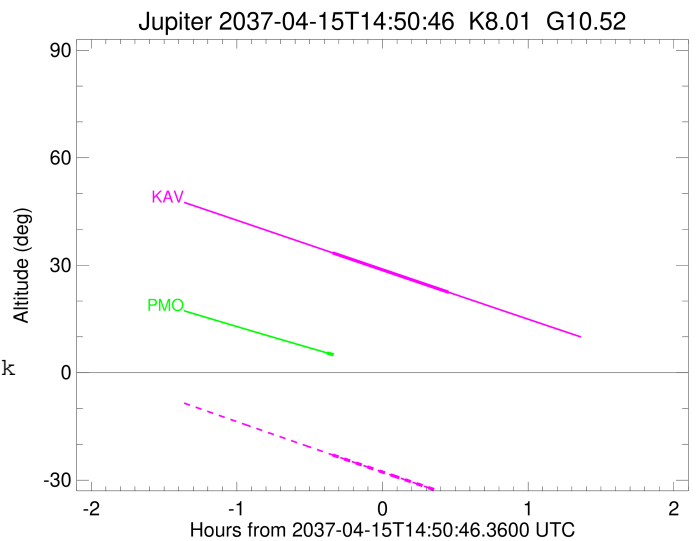
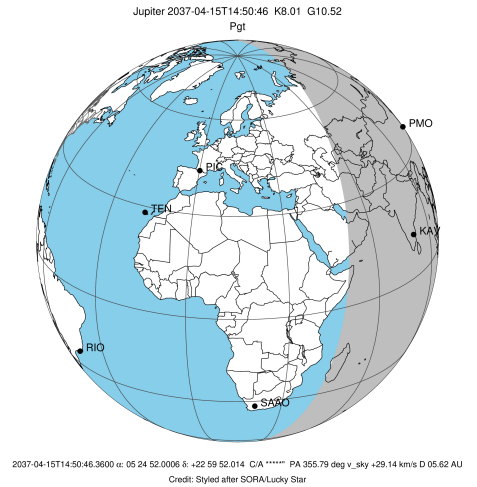
Observable events with sun below -5 deg and altitude above 5 deg

Obs	Location	lat	Elon	Target	Observed Events Interval	OCode
PIC	Pic du Midi	42.9	0.1			Pnn
PAL	Palomar Mt (200")	33.4	243.1			Pnn
PMO	Purple Mtn Obs. Nanking	32.1	118.8	+	APR 15 14:27 - APR 15 14:27	Pin
KPNO	Kitt Peak Natl Obs	32.0	248.4			Pnn
MCD	McDonald Obs. 2.7m	30.7	256.0			Pnn
TEN	Teide Obs./Tenerife	28.3	343.5			Pnn
IRTF	Mauna Kea/IRTF	19.8	204.5			Pnn
KAV	Kavalur Observatory	12.6	78.8	+ +	APR 15 14:30 - APR 15 15:18	Pie
RIO	Rio de Janeiro	-22.9	316.8			Pnn
ESO	European Southern Obs. (3.6m)	-29.3	289.3			Pnn
AAT	Siding Spring (AAT)	-31.3	149.1			Pnn
SAAO	So. Afr. Astro. Obs. (Sutherland)	-32.4	20.8			Pnn
MSO	Mt. Stromlo Observatory	-35.3	149.0			Pnn



```

target                : Jupiter
target radius (km)   : 71492.00
C/A epoch             : 2037-04-15T14:54:04.220
Event type            : Pgt
: Jupiter occs: geocentric, topocentric
: Not a ringed target
Observer code         : PMO
Location              : Purple Mtn Obs. Nanking
Latitude (deg)        : 32.06667
E. Longitude (deg)    : 118.82089
Altitude (km)         : 0.364
Gaia source ID        : 3416109303818953216
2Mass ID (if available) : 05245198+2259531
ICRS Star Coord at Epoch: 05h 24m 52.00064s +22:59:52.01360s
RUWE (>1.4 is poor) : 1.22
K magnitude           : 8.011
G magnitude           : 10.523
RP magnitude          : 9.694
BP magnitude          : 11.171
DUPflag              : 0
Distance (au)         : 5.620
f0 (km)               : 0.00
g0 (km)               : 0.00
skyplane vel. (km/s) : 29.14
Sun-Target sep (deg)  : 56.46
Sun-Moon sep (deg)    : 57.64
B (ring opening deg) : 2.34
PA of pole (deg)      : -2.94
Pole direction: RA (deg): 268.05629
Dec (deg): 64.49688
C/A sky separation (") : 13.449
C/A sky separation (km) : 54822.9
NAIF SPICE kernels   : RAJobs_U111+rgf15.spk
URKALLv1.spk
naif0012.tls
nep097.bsp
nep101.bsp
sat4401.bsp
de440.bsp
earth_720101_070426.bpc
jup365.bsp
urall6.bsp
IAU_SATURN_for_RINGFIT.tpc
pck00010.tpc
earth_200101_990628_predict.bpc
uranus_ringframes_rfrench20220627_v1.tf
neptune_ringframes_rfrench20220702a_v1.tf
earth_flat_IAU.spk
    
```

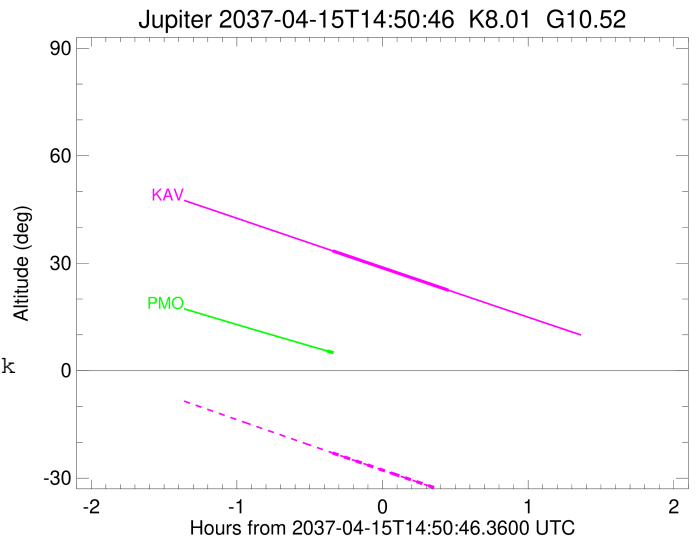
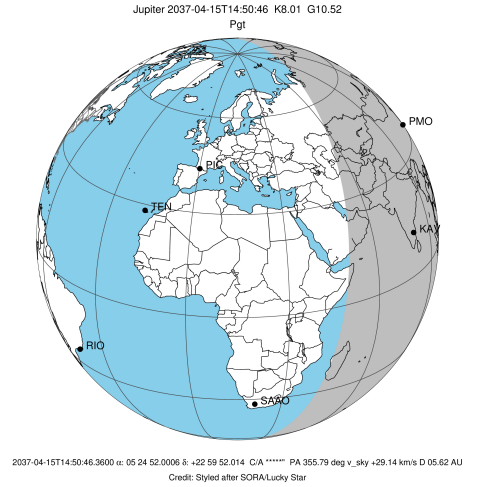


x: target alt < 5.0 deg or sun > -5.0 deg

Target	I/E	UTC	alt	alt-sun	radius	lat-geo	lat-geodetic
Jupiter	I	2037-04-15T14:27:53.514	5.53	-42.13	71487.7	-49.05	-52.67
Jupiter	E	2037-04-15T15:20:12.111	-4.37x	-46.75	71487.5	-50.98	-54.54

```

target                : Jupiter
target radius (km)   : 71492.00
C/A epoch            : 2037-04-15T14:54:09.750
Event type           : Pgt
: Jupiter occs: geocentric, topocentric
: Not a ringed target
Observer code        : KAV
Location             : Kavalur Observatory
Latitude (deg)       : 12.57556
E. Longitude (deg)   : 78.83167
Altitude (km)        : 0.722
Gaia source ID       : 3416109303818953216
2Mass ID (if available) : 05245198+2259531
ICRS Star Coord at Epoch: 05h 24m 52.00064s +22:59:52.01360s
RUWE (>1.4 is poor) : 1.22
K magnitude          : 8.011
G magnitude          : 10.523
RP magnitude         : 9.694
BP magnitude         : 11.171
DUPflag             : 0
Distance (au)        : 5.620
f0 (km)              : 0.00
g0 (km)              : 0.00
skyplane vel. (km/s) : 29.14
Sun-Target sep (deg) : 56.46
Sun-Moon sep (deg)   : 57.98
B (ring opening deg) : 2.34
PA of pole (deg)     : -2.94
Pole direction: RA (deg): 268.05629
Dec (deg): 64.49688
C/A sky separation ("): 14.289
C/A sky separation (km): 58247.8
NAIF SPICE kernels   : RAJobs_U111+rgf15.spk
URKALLv1.spk
naif0012.tls
nep097.bsp
nep101.bsp
sat4401.bsp
de440.bsp
earth_720101_070426.bpc
jup365.bsp
urall6.bsp
IAU_SATURN_for_RINGFIT.tpc
pck00010.tpc
earth_200101_990628_predict.bpc
uranus_ringframes_rfrench20220627_v1.tf
neptune_ringframes_rfrench20220702a_v1.tf
earth_flat_IAU.spk
    
```



x: target alt < 5.0 deg or sun > -5.0 deg

Target	I/E	UTC	alt	alt-sun	radius	lat-geo	lat-geodetic
Jupiter	I	2037-04-15T14:30:16.133	33.44	-22.97	71487.2	-53.51	-56.95
Jupiter	E	2037-04-15T15:18:00.885	22.44	-33.99	71486.9	-55.47	-58.81