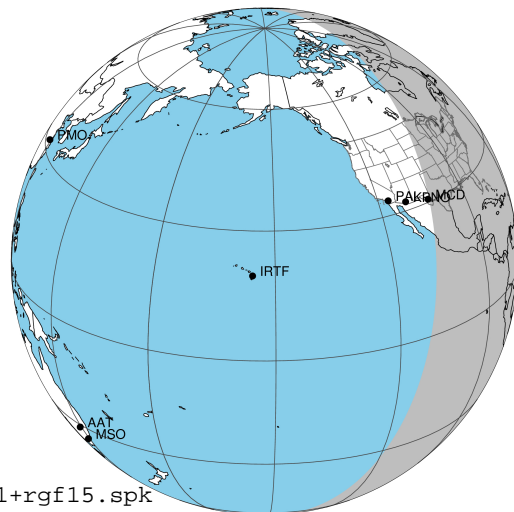


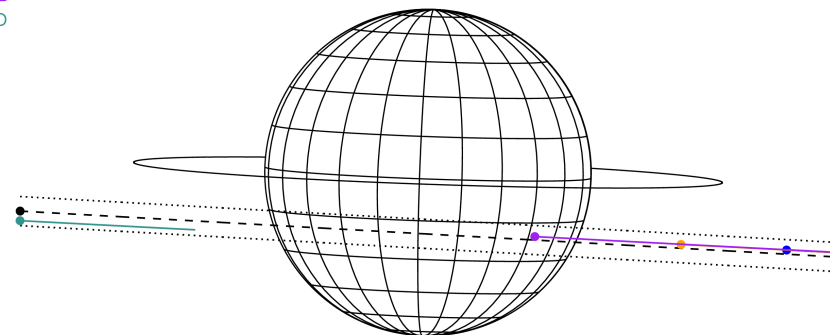
target : Jupiter
 target radius (km) : 71492.00
 C/A epoch : 2037-04-27T01:24:47.010
 Event type : Pgt
 : Jupiter occs: geocentric, topocentric
 : Not a ringed target
 Gaia source ID : 3404512999496164736
 2Mass ID (if available) : 05334932+2308009

Jupiter 2037-04-27T01:24:47 K6.84 G10.10 Pgt

ICRS Star Coord at Epoch: 05h 33m 49.32668s +23:08:00.79954s
 RUWE (>1.4 is poor) : 1.19
 K magnitude : 6.839
 G magnitude : 10.100
 RP magnitude : 9.178
 BP magnitude : 10.987
 DUPflag : 0
 Distance (au) : 5.767
 f0 (km) : 0.00
 g0 (km) : 0.00
 skyplane vel. (km/s) : 32.87
 Sun-Target sep (deg) : 47.36
 Sun-Moon sep (deg) : 95.18
 B (ring opening deg) : 2.30
 PA of pole (deg) : -1.98
 Pole direction: RA (deg): 268.05628
 Dec (deg): 64.49688
 C/A sky separation (") : 6.436
 C/A sky separation (km) : 26916.8
 NAIF SPICE kernels : RAJobs_U111+rgf15.spk



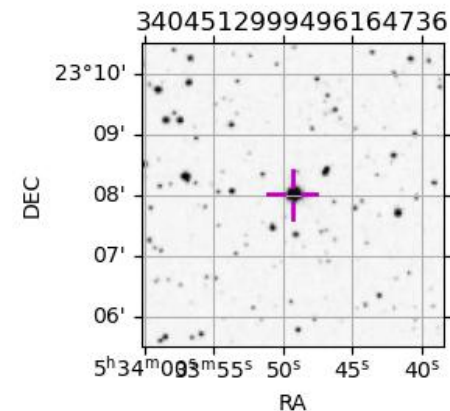
Earth
 PAL
 KPNO
 MCD
 ESO



2037-04-27T01:24:47.0100 cc: 05 33 49.3267 8: +23 08 00.800 C/A 6.427" PA 356.78 deg v_sky +32.87 km/s D 05.77 AU
 Credit: Styled after SORA/Lucky Star

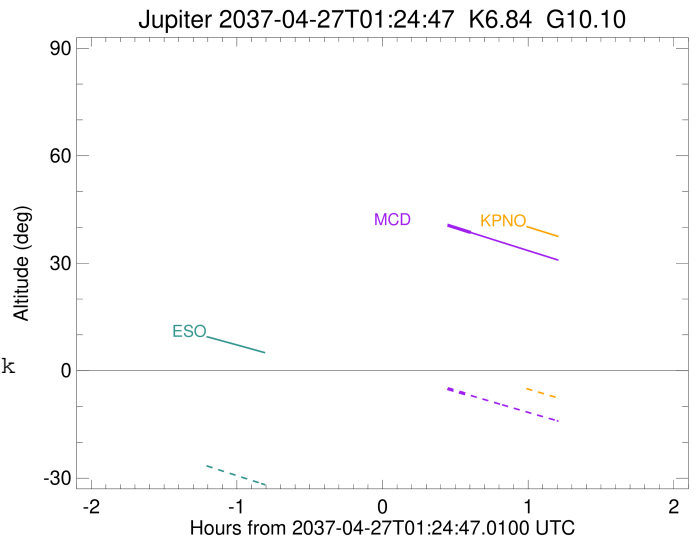
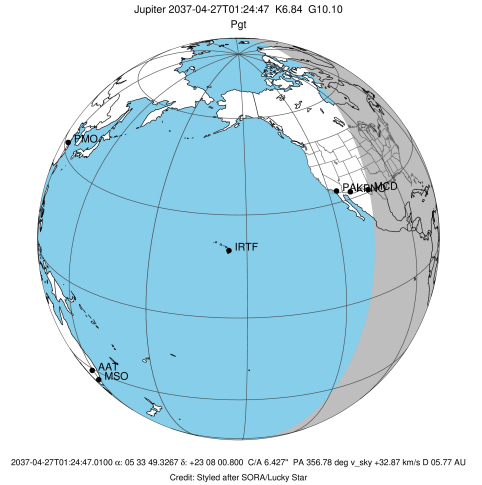
Observable events with sun below -5 deg and altitude above 5 deg

Obs	Location	lat	Elon	Target	Observed Events Interval	OCode
PIC	Pic du Midi	42.9	0.1			Pnn
PAL	Palomar Mt (200")	33.4	243.1			Pnn
PMO	Purple Mtn Obs. Nanking	32.1	118.8			Pnn
KPNO	Kitt Peak Natl Obs	32.0	248.4			Pnn
MCD	McDonald Obs. 2.7m	30.7	256.0	+	APR 27 02:01 - APR 27 02:01	Pne
TEN	Teide Obs./Tenerife	28.3	343.5			Pnn
IRTF	Mauna Kea/IRTF	19.8	204.5			Pnn
KAV	Kavalur Observatory	12.6	78.8			Pnn
RIO	Rio de Janeiro	-22.9	316.8			Pnn
ESO	European Southern Obs. (3.6m)	-29.3	289.3			Pnn
AAT	Siding Spring (AAT)	-31.3	149.1			Pnn
SAAO	So. Afr. Astro. Obs. (Sutherland)	-32.4	20.8			Pnn
MSO	Mt. Stromlo Observatory	-35.3	149.0			Pnn



```

target                : Jupiter
target radius (km)   : 71492.00
C/A epoch             : 2037-04-27T01:26:58.120
Event type            : Pgt
: Jupiter occs: geocentric, topocentric
: Not a ringed target
Observer code         : MCD
Location              : McDonald Obs. 2.7m
Latitude (deg)        : 30.67158
E. Longitude (deg)    : 255.97844
Altitude (km)         : 2.075
Gaia source ID        : 3404512999496164736
2Mass ID (if available) : 05334932+2308009
ICRS Star Coord at Epoch: 05h 33m 49.32668s +23:08:00.79954s
RUWE (>1.4 is poor) : 1.19
K magnitude           : 6.839
G magnitude           : 10.100
RP magnitude          : 9.178
BP magnitude          : 10.987
DUPflag              : 0
Distance (au)         : 5.767
f0 (km)               : 0.00
g0 (km)               : 0.00
skyplane vel. (km/s) : 32.87
Sun-Target sep (deg) : 47.36
Sun-Moon sep (deg)   : 95.97
B (ring opening deg) : 2.30
PA of pole (deg)     : -1.98
Pole direction: RA (deg): 268.05628
Dec (deg): 64.49688
C/A sky separation (") : 6.115
C/A sky separation (km) : 25575.0
NAIF SPICE kernels   : RAJobs_U111+rgf15.spk
URKALLv1.spk
naif0012.tls
nep097.bsp
nep101.bsp
sat4401.bsp
de440.bsp
earth_720101_070426.bpc
jup365.bsp
urall6.bsp
IAU_SATURN_for_RINGFIT.tpc
pck00010.tpc
earth_200101_990628_predict.bpc
uranus_ringframes_rfrench20220627_v1.tf
neptune_ringframes_rfrench20220702a_v1.tf
earth_flat_IAU.spk
    
```



x: target alt < 5.0 deg or sun > -5.0 deg

Target	I/E	UTC	alt	alt-sun	radius	lat-geo	lat-geodetic
Jupiter	I	2037-04-27T00:52:48.614	53.28	7.18x	71491.2	-19.88	-22.44
Jupiter	E	2037-04-27T02:01:04.274	38.58	-6.92	71491.0	-21.98	-24.75