

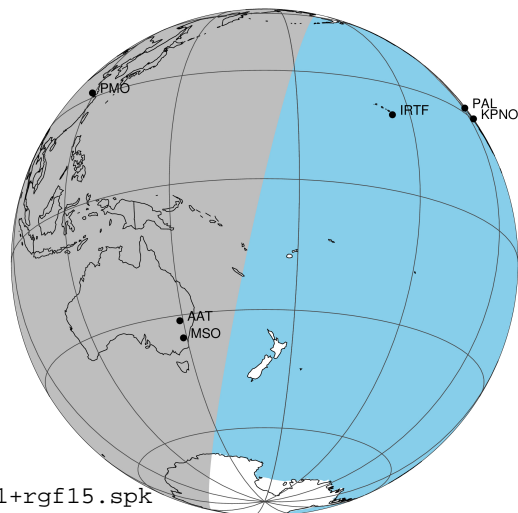
target : Jupiter
 target radius (km) : 71492.00
 C/A epoch : 2042-02-14T18:46:22.900
 Event type : Pgt
 : Jupiter occs: geocentric, topocentric
 : Not a ringed target
 Gaia source ID : 6247888276957094016
 2Mass ID (if available) : 15520935-1909313

Jupiter 2042-02-14T18:46:22 K5.94 G9.54 Pgt

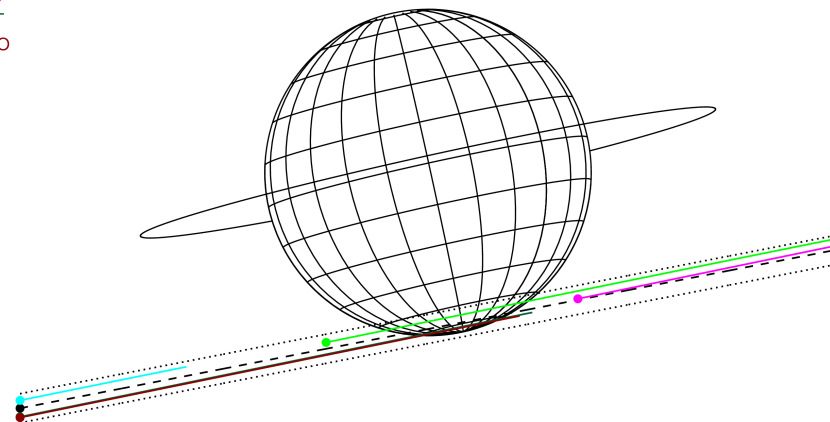
ICRS Star Coord at Epoch: 15h 52m 09.33657s -19°09:31.74452s

RUWE (>1.4 is poor) : 1.10
 K magnitude : 5.936
 G magnitude : 9.540
 RP magnitude : 8.538
 BP magnitude : 10.578
 DUPflag : 0
 Distance (au) : 5.391
 f0 (km) : 0.00
 g0 (km) : 0.00
 skyplane vel. (km/s) : 15.06
 Sun-Target sep (deg) : 85.63
 Sun-Moon sep (deg) : 13.57
 B (ring opening deg) : -3.21
 PA of pole (deg) : 12.46
 Pole direction: RA (deg): 268.05641
 Dec (deg): 64.49728
 C/A sky separation (") : 17.215
 C/A sky separation (km) : 67305.7
 NAIF SPICE kernels : RAJobs_U111+rgf15.spk

Jupiter 2042-02-14T18:46:22 K5.94 G9.54
 Pgt



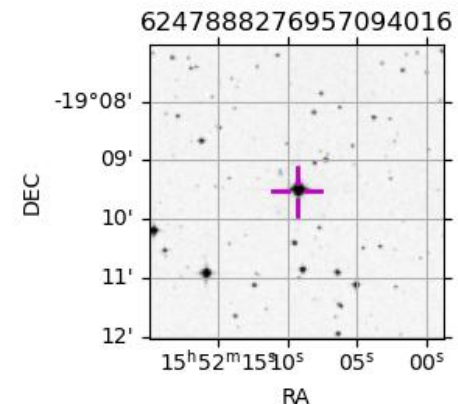
Earth
 PMO
 IRTF
 KAV
 AAT
 MSO



2042-02-14T18:46:22.9000 α: 15 52 09.3366 δ: -19 09 31.745 C/A ***** PA 10.99 deg v_sky +15.06 km/s D 05.39 AU
 Credit: Styled after SORA/Lucky Star

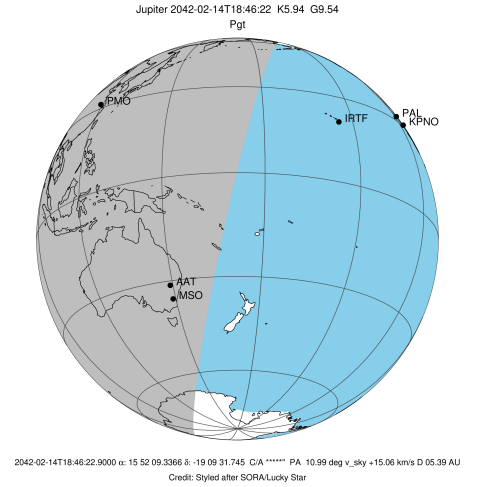
Observable events with sun below -5 deg and altitude above 5 deg

Obs	Location	lat	Elon	Target	Observed Events Interval	OCode
PIC	Pic du Midi	42.9	0.1			Pnn
PAL	Palomar Mt (200")	33.4	243.1			Pnn
PMO	Purple Mtn Obs. Nanking	32.1	118.8	+ +	FEB 14 18:05 - FEB 14 19:17	Pie
KPNO	Kitt Peak Natl Obs	32.0	248.4			Pnn
MCD	McDonald Obs. 2.7m	30.7	256.0			Pnn
TEN	Teide Obs./Tenerife	28.3	343.5			Pnn
IRTF	Mauna Kea/IRTF	19.8	204.5			Pnn
KAV	Kavalur Observatory	12.6	78.8			Pnn
RIO	Rio de Janeiro	-22.9	316.8			Pnn
ESO	European Southern Obs. (3.6m)	-29.3	289.3			Pnn
AAT	Siding Spring (AAT)	-31.3	149.1	+ +	FEB 14 18:24 - FEB 14 19:05	Pie
SAAO	So. Afr. Astro. Obs. (Sutherland)	-32.4	20.8			Pnn
MSO	Mt. Stromlo Observatory	-35.3	149.0	+ +	FEB 14 18:26 - FEB 14 19:03	Pie

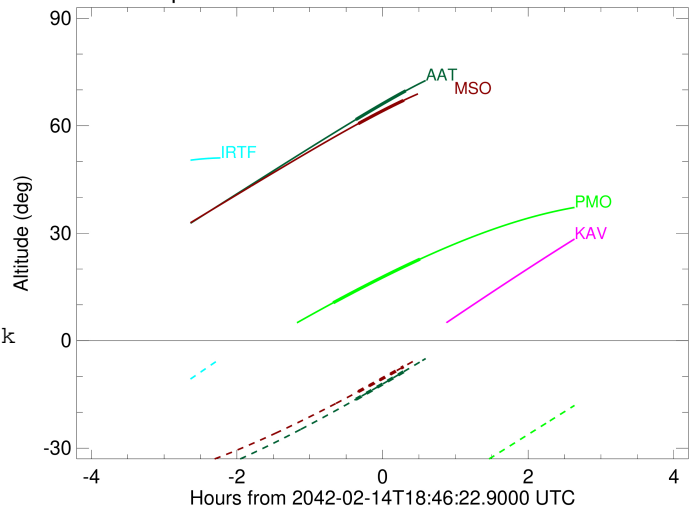


```

target                : Jupiter
target radius (km)   : 71492.00
C/A epoch            : 2042-02-14T18:41:25.290
Event type           : Pgt
: Jupiter occs: geocentric, topocentric
: Not a ringed target
Observer code        : PMO
Location             : Purple Mtn Obs. Nanking
Latitude (deg)       : 32.06667
E. Longitude (deg)   : 118.82089
Altitude (km)        : 0.364
Gaia source ID       : 6247888276957094016
2Mass ID (if available) : 15520935-1909313
ICRS Star Coord at Epoch: 15h 52m 09.33657s -19:09:31.74452s
RUWE (>1.4 is poor) : 1.10
K magnitude          : 5.936
G magnitude          : 9.540
RP magnitude         : 8.538
BP magnitude         : 10.578
DUPflag             : 0
Distance (au)        : 5.391
f0 (km)              : 0.00
g0 (km)              : 0.00
skyplane vel. (km/s) : 15.06
Sun-Target sep (deg) : 85.63
Sun-Moon sep (deg)   : 14.49
B (ring opening deg) : -3.21
PA of pole (deg)     : 12.46
Pole direction: RA (deg): 268.05641
Dec (deg): 64.49728
C/A sky separation (") : 16.368
C/A sky separation (km) : 63992.3
NAIF SPICE kernels   : RAJobs_U111+rgf15.spk
URKALLv1.spk
naif0012.tls
nep097.bsp
nep101.bsp
sat4401.bsp
de440.bsp
earth_720101_070426.bpc
jup365.bsp
urall6.bsp
IAU_SATURN_for_RINGFIT.tpc
pck00010.tpc
earth_200101_990628_predict.bpc
uranus_ringframes_rfrench20220627_v1.tf
neptune_ringframes_rfrench20220702a_v1.tf
earth_flat_IAU.spk
    
```



Jupiter 2042-02-14T18:46:22 K5.94 G9.54

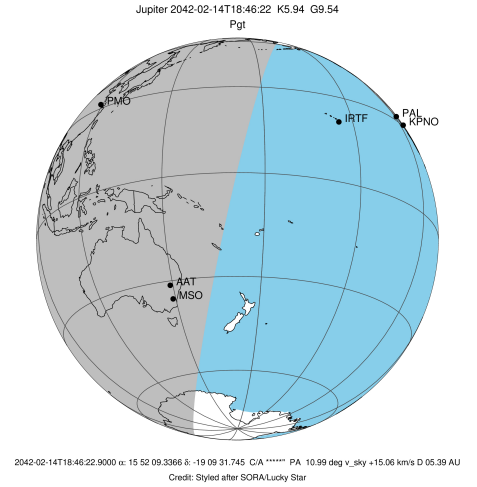


x: target alt < 5.0 deg or sun > -5.0 deg

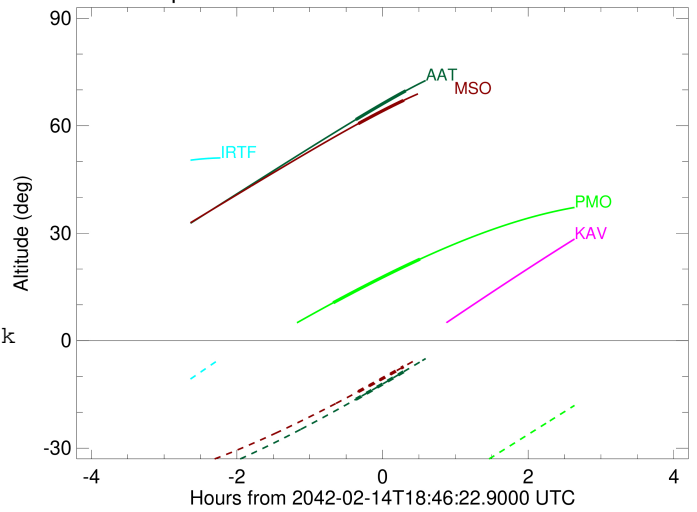
Target	I/E	UTC	alt	alt-sun	radius	lat-geo	lat-geodetic
Jupiter	I	2042-02-14T18:05:46.847	10.58	-58.90	71480.9	-62.46	-65.34
Jupiter	E	2042-02-14T19:17:12.605	22.75	-44.93	71480.5	-64.26	-67.00

```

target                : Jupiter
target radius (km)   : 71492.00
C/A epoch            : 2042-02-14T18:44:56.900
Event type          : Pgt
                    : Jupiter occs: geocentric, topocentric
                    : Not a ringed target
Observer code       : AAT
Location            : Siding Spring (AAT)
Latitude (deg)     : -31.27703
E. Longitude (deg) : 149.06608
Altitude (km)      : 1.164
Gaia source ID     : 6247888276957094016
2Mass ID (if available) : 15520935-1909313
ICRS Star Coord at Epoch: 15h 52m 09.33657s -19:09:31.74452s
RUWE (>1.4 is poor) : 1.10
K magnitude         : 5.936
G magnitude         : 9.540
RP magnitude        : 8.538
BP magnitude        : 10.578
DUPflag            : 0
Distance (au)      : 5.391
f0 (km)            : 0.00
g0 (km)            : 0.00
skyplane vel. (km/s) : 15.06
Sun-Target sep (deg) : 85.63
Sun-Moon sep (deg)  : 13.94
B (ring opening deg) : -3.21
PA of pole (deg)   : 12.46
Pole direction: RA (deg): 268.05641
Dec (deg): 64.49728
C/A sky separation (") : 17.685
C/A sky separation (km) : 69141.8
NAIF SPICE kernels : RAJobs_U111+rgf15.spk
URKALLv1.spk
naif0012.tls
nep097.bsp
nep101.bsp
sat4401.bsp
de440.bsp
earth_720101_070426.bpc
jup365.bsp
urall6.bsp
IAU_SATURN_for_RINGFIT.tpc
pck00010.tpc
earth_200101_990628_predict.bpc
uranus_ringframes_rfrench20220627_v1.tf
neptune_ringframes_rfrench20220702a_v1.tf
earth_flat_IAU.spk
    
```



Jupiter 2042-02-14T18:46:22 K5.94 G9.54

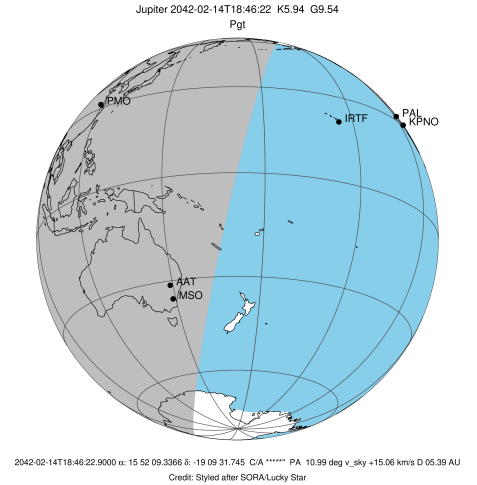


x: target alt < 5.0 deg or sun > -5.0 deg

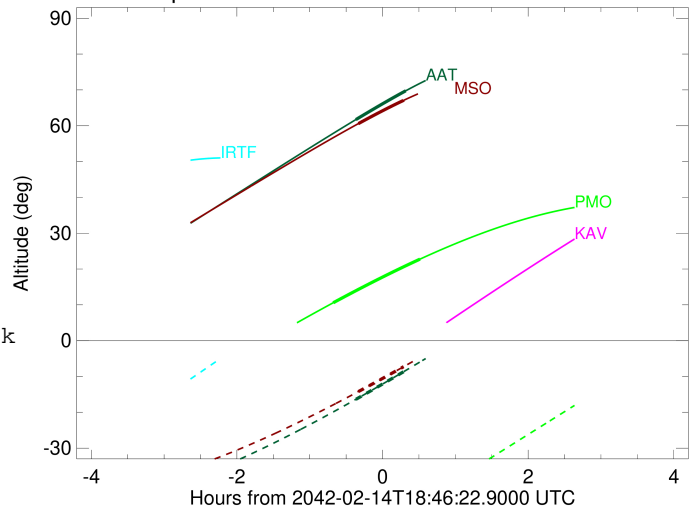
Target	I/E	UTC	alt	alt-sun	radius	lat-geo	lat-geodetic
Jupiter	I	2042-02-14T18:24:27.171	61.71	-16.37	71478.9	-74.00	-75.82
Jupiter	E	2042-02-14T19:05:28.410	69.73	-8.32	71478.7	-75.97	-77.58

```

target                : Jupiter
target radius (km)   : 71492.00
C/A epoch            : 2042-02-14T18:45:07.000
Event type           : Pgt
: Jupiter occs: geocentric, topocentric
: Not a ringed target
Observer code        : MSO
Location             : Mt. Stromlo Observatory
Latitude (deg)       : -35.32000
E. Longitude (deg)   : 149.00833
Altitude (km)        : 0.770
Gaia source ID       : 6247888276957094016
2Mass ID (if available) : 15520935-1909313
ICRS Star Coord at Epoch: 15h 52m 09.33657s -19:09:31.74452s
RUWE (>1.4 is poor) : 1.10
K magnitude          : 5.936
G magnitude          : 9.540
RP magnitude         : 8.538
BP magnitude         : 10.578
DUPflag             : 0
Distance (au)        : 5.391
f0 (km)              : 0.00
g0 (km)              : 0.00
skyplane vel. (km/s) : 15.06
Sun-Target sep (deg) : 85.63
Sun-Moon sep (deg)   : 13.89
B (ring opening deg) : -3.21
PA of pole (deg)     : 12.46
Pole direction: RA (deg): 268.05641
Dec (deg): 64.49728
C/A sky separation (") : 17.788
C/A sky separation (km) : 69544.4
NAIF SPICE kernels   : RAJobs_U111+rgf15.spk
URKALLv1.spk
naif0012.tls
nep097.bsp
nep101.bsp
sat4401.bsp
de440.bsp
earth_720101_070426.bpc
jup365.bsp
urall6.bsp
IAU_SATURN_for_RINGFIT.tpc
pck00010.tpc
earth_200101_990628_predict.bpc
uranus_ringframes_rfrench20220627_v1.tf
neptune_ringframes_rfrench20220702a_v1.tf
earth_flat_IAU.spk
    
```



Jupiter 2042-02-14T18:46:22 K5.94 G9.54



x: target alt < 5.0 deg or sun > -5.0 deg

Target	I/E	UTC	alt	alt-sun	radius	lat-geo	lat-geodetic
Jupiter	I	2042-02-14T18:26:27.690	60.57	-14.22	71478.8	-75.28	-76.96
Jupiter	E	2042-02-14T19:03:47.741	67.08	-7.26	71478.6	-77.28	-78.75