

```
target           : Jupiter
target radius (km) : 71492.00
C/A epoch       : 2043-02-07T15:11:15.400
Event type      : Pgt
                : Jupiter occs: geocentric, topocentric
                : Not a ringed target
Gaia source ID  : 4116878611766036608
2Mass ID (if available) : 17421304-2254399
```

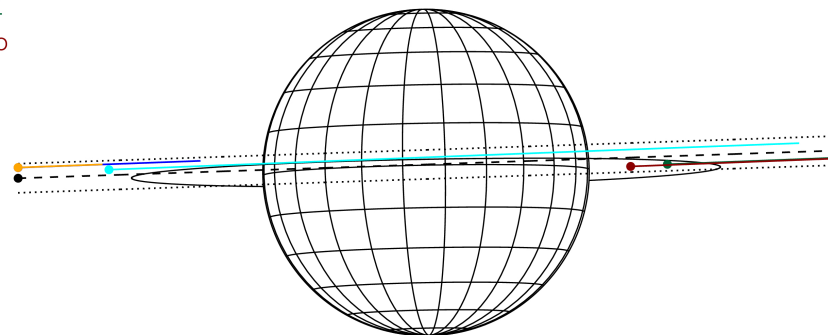
Jupiter 2043-02-07T15:11:15 K8.86 G13.80 Pgt

ICRS Star Coord at Epoch: 17h 42m 13.02017s -22:54:39.98168s

```
RUWE (>1.4 is poor) : 0.92
K magnitude           : 8.857
G magnitude           : 13.795
RP magnitude          : 12.554
BP magnitude          : 15.515
DUPflag              : 0
Distance (au)         : 5.857
f0 (km)               : 0.00
g0 (km)               : 0.00
skyplane vel. (km/s) : 31.46
Sun-Target sep (deg)  : 52.23
Sun-Moon sep (deg)   : 24.66
B (ring opening deg) : -2.57
PA of pole (deg)     : 1.08
Pole direction: RA (deg): 268.05661
Dec (deg): 64.49732
C/A sky separation (") : 0.829
C/A sky separation (km) : 3523.2
NAIF SPICE kernels   : RAJobs_U111+rgf15.spk
```



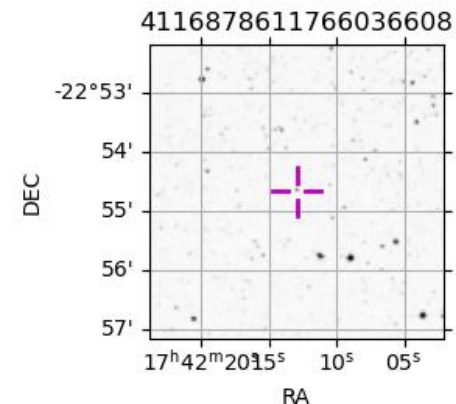
```
Earth
PAL
KPNO
IRTF
AAT
MSO
```



2043-02-07T15:11:15.400000000: 17 42 13.02022 S: -22 54 39.982 C/A 0.8207 PA 181.93 deg v_sky +31.46 km/s D 05.86 AU
 Credit: Styled after SORA/Lucky Star

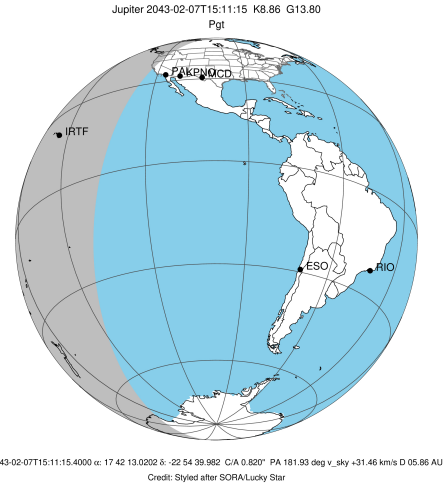
Observable events with sun below -5 deg and altitude above 5 deg

Obs	Location	lat	Elon	Target	Observed Events Interval	OCode
PIC	Pic du Midi	42.9	0.1			Pnn
PAL	Palomar Mt (200")	33.4	243.1			Pnn
PMO	Purple Mtn Obs. Nanking	32.1	118.8			Pnn
KPNO	Kitt Peak Natl Obs	32.0	248.4			Pnn
MCD	McDonald Obs. 2.7m	30.7	256.0			Pnn
TEN	Teide Obs./Tenerife	28.3	343.5			Pnn
IRTF	Mauna Kea/IRTF	19.8	204.5	+ +	FEB 07 14:30 - FEB 07 15:46	Pie
KAV	Kavalur Observatory	12.6	78.8			Pnn
RIO	Rio de Janeiro	-22.9	316.8			Pnn
ESO	European Southern Obs. (3.6m)	-29.3	289.3			Pnn
AAT	Siding Spring (AAT)	-31.3	149.1			Pnn
SAAO	So. Afr. Astro. Obs. (Sutherland)	-32.4	20.8			Pnn
MSO	Mt. Stromlo Observatory	-35.3	149.0			Pnn

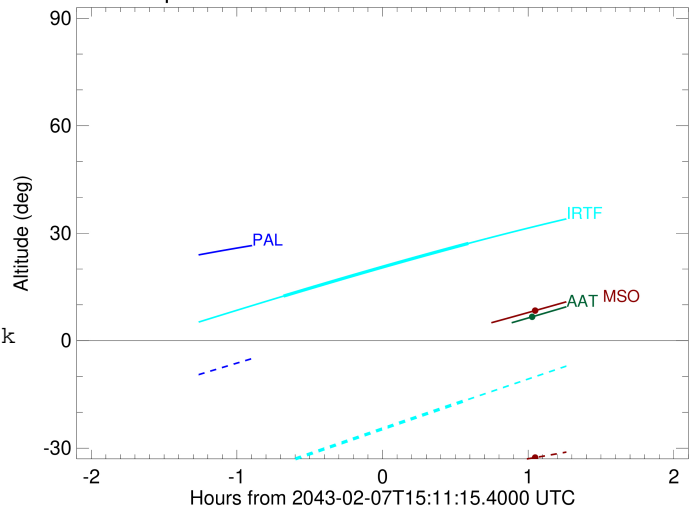


```

target                : Jupiter
target radius (km)   : 71492.00
C/A epoch             : 2043-02-07T15:08:31.500
Event type            : Pgt
: Jupiter occs: geocentric, topocentric
: Not a ringed target
Observer code         : IRTF
Location              : Mauna Kea/IRTF
Latitude (deg)       : 19.82622
E. Longitude (deg)   : 204.52800
Altitude (km)        : 4.168
Gaia source ID       : 4116878611766036608
2Mass ID (if available) : 17421304-2254399
ICRS Star Coord at Epoch: 17h 42m 13.02017s -22:54:39.98168s
RUWE (>1.4 is poor) : 0.92
K magnitude           : 8.857
G magnitude           : 13.795
RP magnitude         : 12.554
BP magnitude         : 15.515
DUPflag              : 0
Distance (au)        : 5.857
f0 (km)              : 0.00
g0 (km)              : 0.00
skyplane vel. (km/s) : 31.46
Sun-Target sep (deg) : 52.23
Sun-Moon sep (deg)  : 25.57
B (ring opening deg) : -2.57
PA of pole (deg)    : 1.08
Pole direction: RA (deg): 268.05661
Dec (deg): 64.49732
C/A sky separation (" ) : 1.562
C/A sky separation (km) : 6634.0
NAIF SPICE kernels   : RAJobs_U111+rgf15.spk
URKALLv1.spk
naif0012.tls
nep097.bsp
nep101.bsp
sat4401.bsp
de440.bsp
earth_720101_070426.bpc
jup365.bsp
urall6.bsp
IAU_SATURN_for_RINGFIT.tpc
pck00010.tpc
earth_200101_990628_predict.bpc
uranus_ringframes_rfrench20220627_v1.tf
neptune_ringframes_rfrench20220702a_v1.tf
earth_flat_IAU.spk
    
```



Jupiter 2043-02-07T15:11:15 K8.86 G13.80



x: target alt < 5.0 deg or sun > -5.0 deg

Target	I/E	UTC	alt	alt-sun	radius	lat-geo	lat-geodetic
Jupiter	I	2043-02-07T14:30:34.416	12.46	-34.12	71491.9	4.17	4.77
Jupiter	E	2043-02-07T15:46:33.859	27.13	-16.41	71491.9	6.44	7.35