

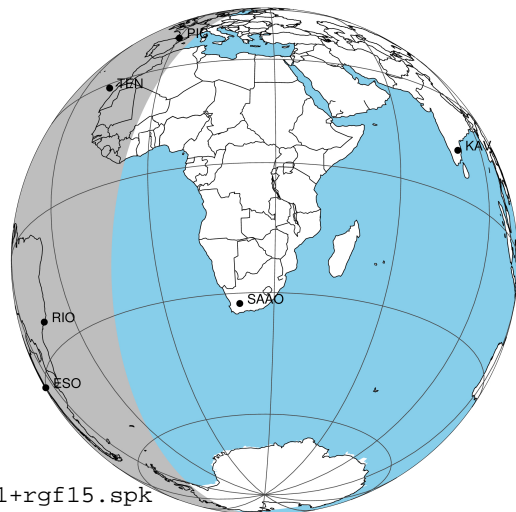
target : Jupiter
 target radius (km) : 71492.00
 C/A epoch : 2043-02-08T06:42:13.810
 Event type : Pt
 : Jupiter occs: topocentric, not geocentric
 : Not a ringed target
 Gaia source ID : 4116877924570926080
 2Mass ID (if available) : 17424290-2254370

Jupiter 2043-02-08T06:42:13 K8.55 G14.75 Pt

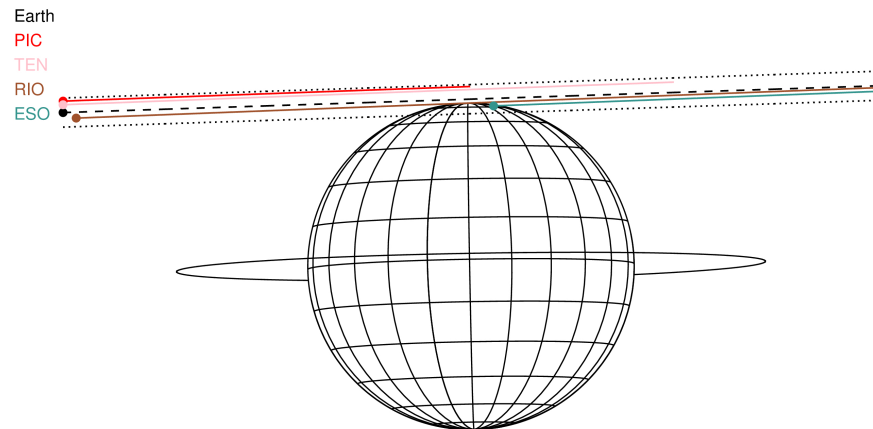
ICRS Star Coord at Epoch: 17h 42m 42.89688s -22:54:37.30592s

RUWE (>1.4 is poor) : 0.95
 K magnitude : 8.555
 G magnitude : 14.747
 RP magnitude : 13.240
 BP magnitude : 17.869
 DUPflag : 0
 Distance (au) : 5.849
 f0 (km) : 0.00
 g0 (km) : 0.00
 skyplane vel. (km/s) : 31.24
 Sun-Target sep (deg) : 52.77
 Sun-Moon sep (deg) : 32.94
 B (ring opening deg) : -2.57
 PA of pole (deg) : 1.02
 Pole direction: RA (deg): 268.05661
 Dec (deg): 64.49732
 C/A sky separation (") : 17.272
 C/A sky separation (km) : 73269.9
 NAIF SPICE kernels : RAJobs_U111+rgf15.spk

Jupiter 2043-02-08T06:42:13 K8.55 G14.75 Pt

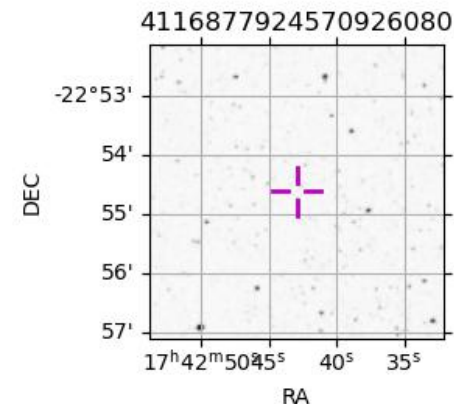


2043-02-08T06:42:13.8100 α: 17 42 42.89688 δ: -22 54 37.306 C/A ***** PA 181.88 deg v_sky +31.24 km/s D 05.85 AU
 Credit: Styled after SORA/Lucky Star



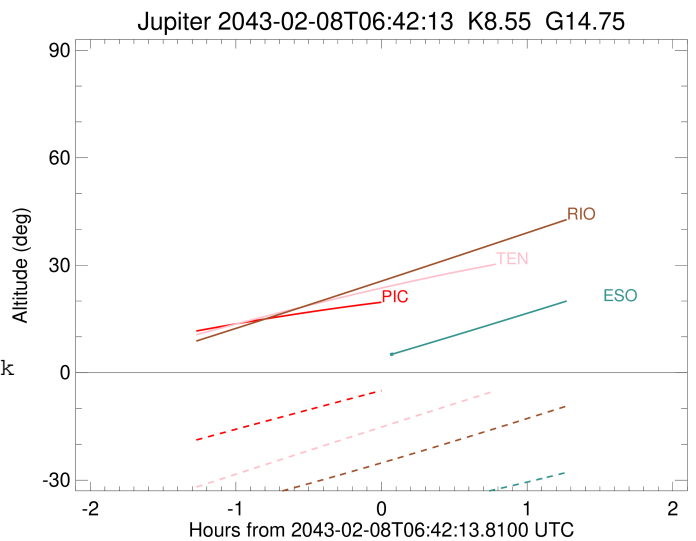
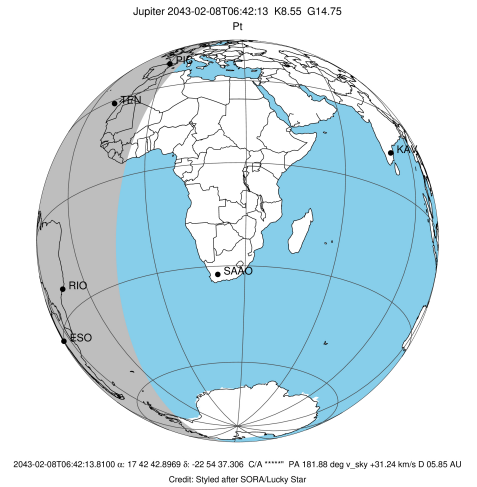
Observable events with sun below -5 deg and altitude above 5 deg

Obs	Location	lat	Elon	Target	Observed Events Interval	OCode
PIC	Pic du Midi	42.9	0.1			Pnn
PAL	Palomar Mt (200")	33.4	243.1			Pnn
PMO	Purple Mtn Obs. Nanking	32.1	118.8			Pnn
KPNO	Kitt Peak Natl Obs	32.0	248.4			Pnn
MCD	McDonald Obs. 2.7m	30.7	256.0			Pnn
TEN	Teide Obs./Tenerife	28.3	343.5			Pnn
IRTF	Mauna Kea/IRTF	19.8	204.5			Pnn
KAV	Kavalur Observatory	12.6	78.8			Pnn
RIO	Rio de Janeiro	-22.9	316.8			Pnn
ESO	European Southern Obs. (3.6m)	-29.3	289.3	+	FEB 08 06:47 - FEB 08 06:47	Pne
AAT	Siding Spring (AAT)	-31.3	149.1			Pnn
SAAO	So. Afr. Astro. Obs. (Sutherland)	-32.4	20.8			Pnn
MSO	Mt. Stromlo Observatory	-35.3	149.0			Pnn



```

target                : Jupiter
target radius (km)   : 71492.00
C/A epoch             : 2043-02-08T06:39:09.570
Event type            : Pt
: Jupiter occs: topocentric, not geocentric
: Not a ringed target
Observer code         : ESO
Location              : European Southern Obs. (3.6m)
Latitude (deg)        : -29.26097
E. Longitude (deg)    : 289.26831
Altitude (km)         : 2.400
Gaia source ID        : 4116877924570926080
2Mass ID (if available) : 17424290-2254370
ICRS Star Coord at Epoch: 17h 42m 42.89688s -22:54:37.30592s
RUWE (>1.4 is poor) : 0.95
K magnitude           : 8.555
G magnitude           : 14.747
RP magnitude          : 13.240
BP magnitude          : 17.869
DUPflag              : 0
Distance (au)         : 5.849
f0 (km)               : 0.00
g0 (km)               : 0.00
skyplane vel. (km/s) : 31.24
Sun-Target sep (deg) : 52.77
Sun-Moon sep (deg)   : 33.58
B (ring opening deg) : -2.57
PA of pole (deg)     : 1.02
Pole direction: RA (deg): 268.05661
Dec (deg): 64.49732
C/A sky separation (") : 16.483
C/A sky separation (km) : 69922.1
NAIF SPICE kernels   : RAJobs_U111+rgf15.spk
URKALLv1.spk
naif0012.tls
nep097.bsp
nep101.bsp
sat4401.bsp
de440.bsp
earth_720101_070426.bpc
jup365.bsp
urall6.bsp
IAU_SATURN_for_RINGFIT.tpc
pck00010.tpc
earth_200101_990628_predict.bpc
uranus_ringframes_rfrench20220627_v1.tf
neptune_ringframes_rfrench20220702a_v1.tf
earth_flat_IAU.spk
    
```



x: target alt < 5.0 deg or sun > -5.0 deg

Target	I/E	UTC	alt	alt-sun	radius	lat-geo	lat-geodetic
Jupiter	I	2043-02-08T06:31:15.085	2.09x	-40.37	71483.5	76.62	78.16
Jupiter	E	2043-02-08T06:47:04.287	5.25	-38.51	71483.3	78.85	80.14