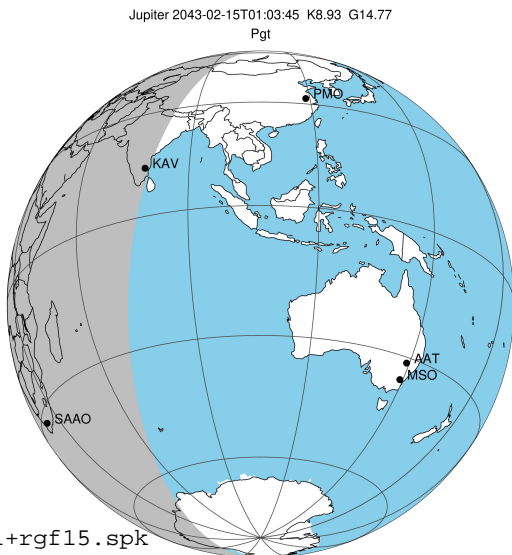


target : Jupiter  
 target radius (km) : 71492.00  
 C/A epoch : 2043-02-15T01:03:45.350  
 Event type : Pgt  
 : Jupiter occs: geocentric, topocentric  
 : Not a ringed target  
 Gaia source ID : 4068885375855727744  
 2Mass ID (if available) : 17474445-2256520

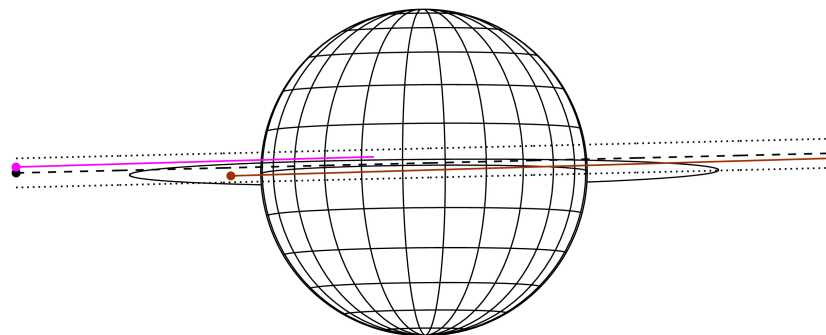
Jupiter 2043-02-15T01:03:45 K8.93 G14.77 Pgt

ICRS Star Coord at Epoch: 17h 47m 44.44454s -22:56:52.36307s  
 RUWE (>1.4 is poor) : 0.96  
 K magnitude : 8.933  
 G magnitude : 14.766  
 RP magnitude : 13.300  
 BP magnitude : 17.632  
 DUPflag : 0  
 Distance (au) : 5.758  
 f0 (km) : 0.00  
 g0 (km) : 0.00  
 skyplane vel. (km/s) : 28.77  
 Sun-Target sep (deg) : 58.46  
 Sun-Moon sep (deg) : 126.51  
 B (ring opening deg) : -2.55  
 PA of pole (deg) : 0.48  
 Pole direction: RA (deg): 268.05662  
 Dec (deg): 64.49732  
 C/A sky separation (") : 0.987  
 C/A sky separation (km) : 4121.1  
 NAIF SPICE kernels : RAJobs\_U111+rgf15.spk  
 URKALLv1.spk  
 naif0012.tls  
 nep097.bsp  
 nep101.bsp  
 sat4401.bsp



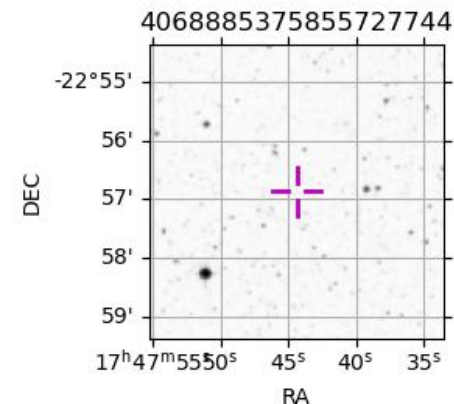
2043-02-15T01:03:45.3500 cc: 17 47 44.4445 s: -22 56 52.363 C/A 0.9777 PA 181.37 deg v\_sky +28.77 km/s D 05.76 AU  
 Credit: Styled after SORA/Lucky Star

Earth  
 KAV  
 SAAO



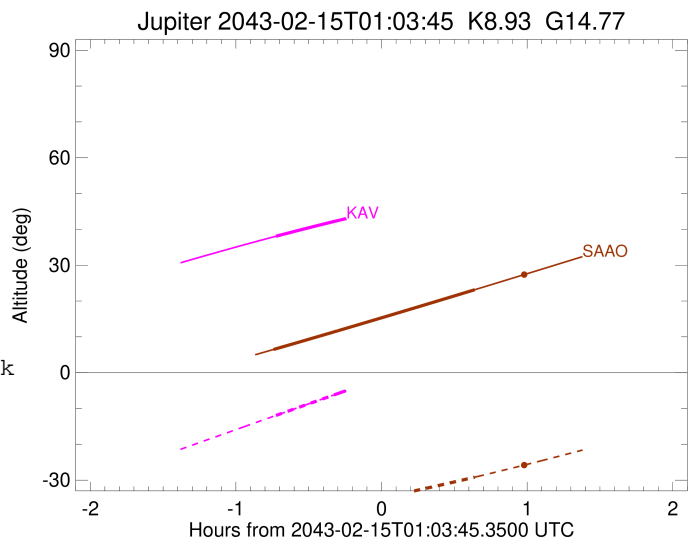
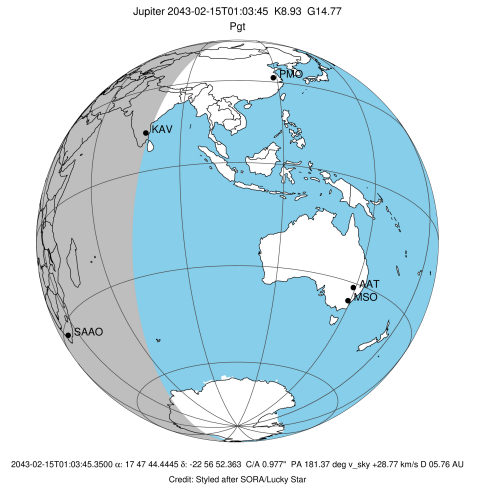
Observable events with sun below -5 deg and altitude above 5 deg

Obs	Location	lat	Elon	Target	Observed Events Interval	OCode
PIC	Pic du Midi	42.9	0.1			Pnn
PAL	Palomar Mt (200")	33.4	243.1			Pnn
PMO	Purple Mtn Obs. Nanking	32.1	118.8			Pnn
KPNO	Kitt Peak Natl Obs	32.0	248.4			Pnn
MCD	McDonald Obs. 2.7m	30.7	256.0			Pnn
TEN	Teide Obs./Tenerife	28.3	343.5			Pnn
IRTF	Mauna Kea/IRTF	19.8	204.5			Pnn
KAV	Kavalur Observatory	12.6	78.8	+	FEB 15 00:20 - FEB 15 00:20	Pin
RIO	Rio de Janeiro	-22.9	316.8			Pnn
ESO	European Southern Obs. (3.6m)	-29.3	289.3			Pnn
AAT	Siding Spring (AAT)	-31.3	149.1			Pnn
SAAO	So. Afr. Astro. Obs. (Sutherland)	-32.4	20.8	+ +	FEB 15 00:19 - FEB 15 01:42	Pie
MSO	Mt. Stromlo Observatory	-35.3	149.0			Pnn



```

target                : Jupiter
target radius (km)   : 71492.00
C/A epoch            : 2043-02-15T01:01:59.630
Event type          : Pgt
                    : Jupiter occs: geocentric, topocentric
                    : Not a ringed target
Observer code       : KAV
Location            : Kavalur Observatory
Latitude (deg)      : 12.57556
E. Longitude (deg)  : 78.83167
Altitude (km)       : 0.722
Gaia source ID      : 4068885375855727744
2Mass ID (if available) : 17474445-2256520
ICRS Star Coord at Epoch: 17h 47m 44.44454s -22:56:52.36307s
RUWE (>1.4 is poor) : 0.96
K magnitude          : 8.933
G magnitude          : 14.766
RP magnitude         : 13.300
BP magnitude         : 17.632
DUPflag             : 0
Distance (au)       : 5.758
f0 (km)              : 0.00
g0 (km)              : 0.00
skyplane vel. (km/s) : 28.77
Sun-Target sep (deg) : 58.46
Sun-Moon sep (deg)  : 126.81
B (ring opening deg) : -2.55
PA of pole (deg)    : 0.48
Pole direction: RA (deg): 268.05662
Dec (deg): 64.49732
C/A sky separation (" ) : 1.789
C/A sky separation (km) : 7472.2
NAIF SPICE kernels  : RAJobs_U111+rgf15.spk
URKALLv1.spk
naif0012.tls
nep097.bsp
nep101.bsp
sat4401.bsp
de440.bsp
earth_720101_070426.bpc
jup365.bsp
urall6.bsp
IAU_SATURN_for_RINGFIT.tpc
pck00010.tpc
earth_200101_990628_predict.bpc
uranus_ringframes_rfrench20220627_v1.tf
neptune_ringframes_rfrench20220702a_v1.tf
earth_flat_IAU.spk
    
```

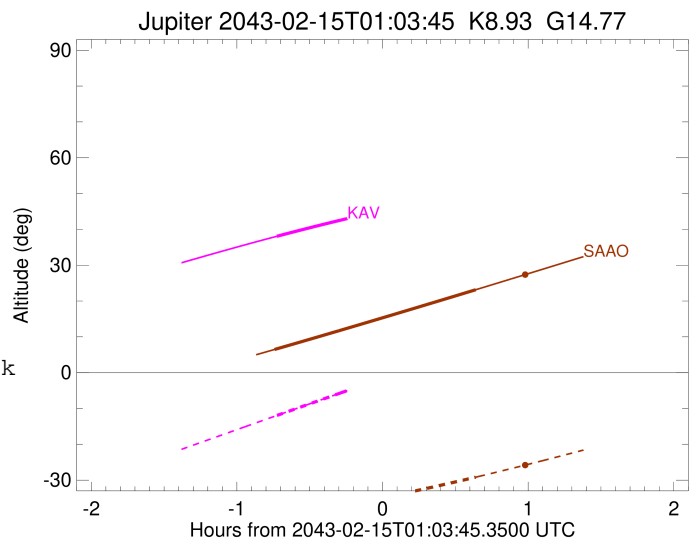
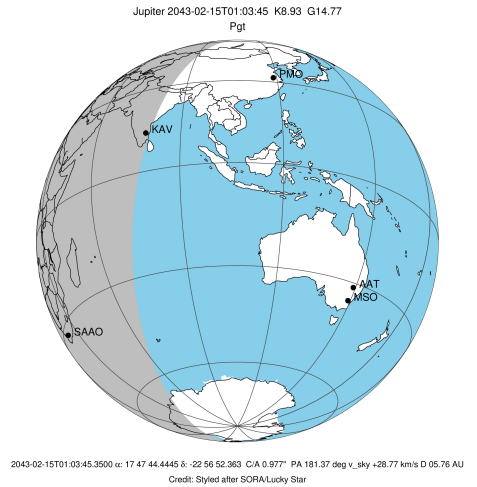


x: target alt < 5.0 deg or sun > -5.0 deg

Target	I/E	UTC	alt	alt-sun	radius	lat-geo	lat-geodetic
Jupiter	I	2043-02-15T00:20:16.196	38.08	-11.94	71491.9	4.88	5.58
Jupiter	E	2043-02-15T01:43:47.720	50.48	7.95x	71491.9	7.05	8.04

```

target                : Jupiter
target radius (km)   : 71492.00
C/A epoch            : 2043-02-15T01:00:40.120
Event type          : Pgt
                    : Jupiter occs: geocentric, topocentric
                    : Not a ringed target
Observer code       : SAAO
Location            : So. Afr. Astro. Obs. (Sutherland)
Latitude (deg)      : -32.37953
E. Longitude (deg)  : 20.81070
Altitude (km)       : 1.768
Gaia source ID      : 4068885375855727744
2Mass ID (if available) : 17474445-2256520
ICRS Star Coord at Epoch: 17h 47m 44.44454s -22:56:52.36307s
RUWE (>1.4 is poor) : 0.96
K magnitude          : 8.933
G magnitude          : 14.766
RP magnitude         : 13.300
BP magnitude         : 17.632
DUPflag             : 0
Distance (au)       : 5.758
f0 (km)              : 0.00
g0 (km)              : 0.00
skyplane vel. (km/s) : 28.77
Sun-Target sep (deg) : 58.46
Sun-Moon sep (deg)  : 126.21
B (ring opening deg) : -2.55
PA of pole (deg)    : 0.48
Pole direction: RA (deg): 268.05662
Dec (deg): 64.49732
C/A sky separation (" ) : 0.242
C/A sky separation (km) : 1011.7
NAIF SPICE kernels  : RAJobs_U111+rgf15.spk
URKALLv1.spk
naif0012.tls
nep097.bsp
nep101.bsp
sat4401.bsp
de440.bsp
earth_720101_070426.bpc
jup365.bsp
urall6.bsp
IAU_SATURN_for_RINGFIT.tpc
pck00010.tpc
earth_200101_990628_predict.bpc
uranus_ringframes_rfrench20220627_v1.tf
neptune_ringframes_rfrench20220702a_v1.tf
earth_flat_IAU.spk
    
```



x: target alt < 5.0 deg or sun > -5.0 deg

Target	I/E	UTC	alt	alt-sun	radius	lat-geo	lat-geodetic
Jupiter	I	2043-02-15T00:19:17.558	6.48	-40.28	71492.0	-0.39	-0.45
Jupiter	E	2043-02-15T01:42:09.927	23.15	-29.17	71492.0	2.01	2.30