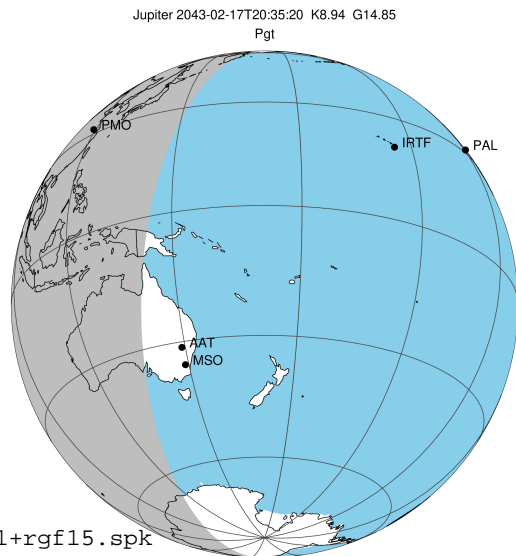


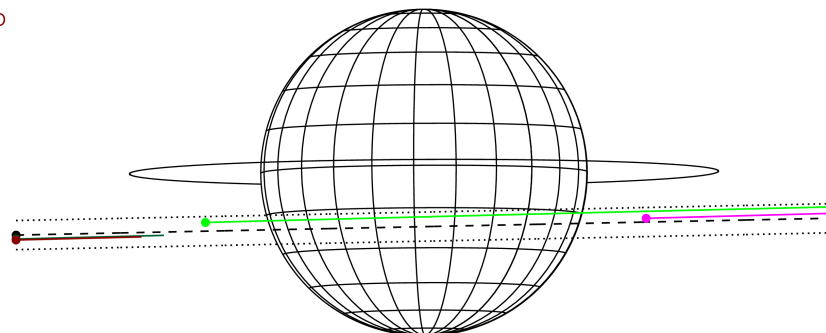
target : Jupiter  
 target radius (km) : 71492.00  
 C/A epoch : 2043-02-17T20:35:20.770  
 Event type : Pgt  
 : Jupiter occs: geocentric, topocentric  
 : Not a ringed target  
 Gaia source ID : 4068874449454928768  
 2Mass ID (if available) : 17494384-2257355

Jupiter 2043-02-17T20:35:20 K8.94 G14.85 Pgt

ICRS Star Coord at Epoch: 17h 49m 43.81453s -22:57:35.97512s  
 RUWE (>1.4 is poor) : 1.01  
 K magnitude : 8.938  
 G magnitude : 14.853  
 RP magnitude : 13.437  
 BP magnitude : 17.336  
 DUPflag : 0  
 Distance (au) : 5.718  
 f0 (km) : 0.00  
 g0 (km) : 0.00  
 skyplane vel. (km/s) : 27.69  
 Sun-Target sep (deg) : 60.84  
 Sun-Moon sep (deg) : 164.89  
 B (ring opening deg) : -2.54  
 PA of pole (deg) : 0.27  
 Pole direction: RA (deg): 268.05662  
 Dec (deg): 64.49732  
 C/A sky separation (") : 5.718  
 C/A sky separation (km) : 23715.3  
 NAIF SPICE kernels : RAJobs\_U111+rgf15.spk



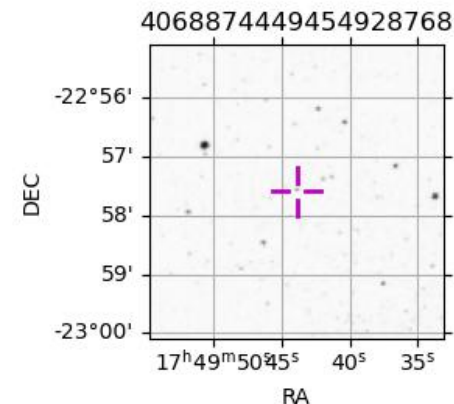
Earth  
 PMO  
 KAV  
 AAT  
 MSO



2043-02-17T20:35:20.7700 @: 17 49 43.8145 @: -22 57 35.975 C/A 5.728" PA 1.19 deg v\_sky +27.69 km/s D 05.72 AU  
 Credit: Styled after SORA/Lucky Star

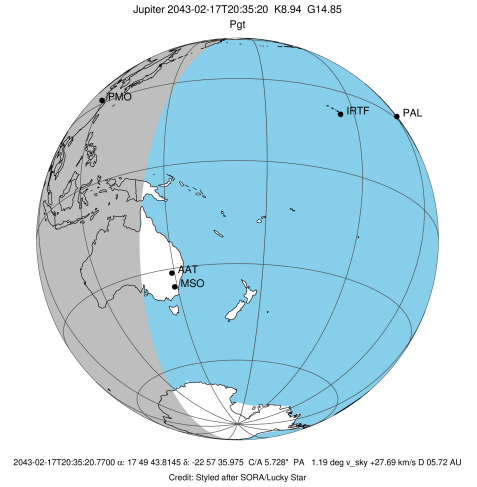
Observable events with sun below -5 deg and altitude above 5 deg

Obs	Location	lat	Elon	Target	Observed Events Interval	OCode
PIC	Pic du Midi	42.9	0.1			Pnn
PAL	Palomar Mt (200")	33.4	243.1			Pnn
PMO	Purple Mtn Obs. Nanking	32.1	118.8	+ +	FEB 17 19:51 - FEB 17 21:14	Pie
KPNO	Kitt Peak Natl Obs	32.0	248.4			Pnn
MCD	McDonald Obs. 2.7m	30.7	256.0			Pnn
TEN	Teide Obs./Tenerife	28.3	343.5			Pnn
IRTF	Mauna Kea/IRTF	19.8	204.5			Pnn
KAV	Kavalur Observatory	12.6	78.8			Pnn
RIO	Rio de Janeiro	-22.9	316.8			Pnn
ESO	European Southern Obs. (3.6m)	-29.3	289.3			Pnn
AAT	Siding Spring (AAT)	-31.3	149.1			Pnn
SAAO	So. Afr. Astro. Obs. (Sutherland)	-32.4	20.8			Pnn
MSO	Mt. Stromlo Observatory	-35.3	149.0			Pnn

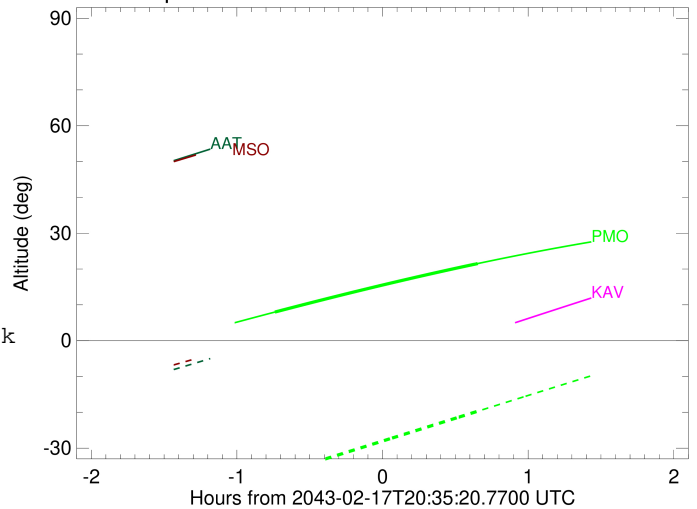


```

target                : Jupiter
target radius (km)   : 71492.00
C/A epoch             : 2043-02-17T20:32:44.780
Event type            : Pgt
: Jupiter occs: geocentric, topocentric
: Not a ringed target
Observer code         : PMO
Location              : Purple Mtn Obs. Nanking
Latitude (deg)       : 32.06667
E. Longitude (deg)   : 118.82089
Altitude (km)        : 0.364
Gaia source ID       : 4068874449454928768
2Mass ID (if available) : 17494384-2257355
ICRS Star Coord at Epoch: 17h 49m 43.81453s -22:57:35.97512s
RUWE (>1.4 is poor) : 1.01
K magnitude           : 8.938
G magnitude           : 14.853
RP magnitude         : 13.437
BP magnitude         : 17.336
DUPflag              : 0
Distance (au)        : 5.718
f0 (km)              : 0.00
g0 (km)              : 0.00
skyplane vel. (km/s) : 27.69
Sun-Target sep (deg) : 60.84
Sun-Moon sep (deg)  : 164.55
B (ring opening deg) : -2.54
PA of pole (deg)    : 0.27
Pole direction: RA (deg): 268.05662
Dec (deg): 64.49732
C/A sky separation (") : 4.684
C/A sky separation (km) : 19425.6
NAIF SPICE kernels   : RAJobs_U111+rgf15.spk
URKALLv1.spk
naif0012.tls
nep097.bsp
nep101.bsp
sat4401.bsp
de440.bsp
earth_720101_070426.bpc
jup365.bsp
urall6.bsp
IAU_SATURN_for_RINGFIT.tpc
pck00010.tpc
earth_200101_990628_predict.bpc
uranus_ringframes_rfrench20220627_v1.tf
neptune_ringframes_rfrench20220702a_v1.tf
earth_flat_IAU.spk
    
```



Jupiter 2043-02-17T20:35:20 K8.94 G14.85



x: target alt < 5.0 deg or sun > -5.0 deg

Target	I/E	UTC	alt	alt-sun	radius	lat-geo	lat-geodetic
Jupiter	I	2043-02-17T19:51:03.022	7.99	-37.37	71491.2	-16.95	-19.20
Jupiter	E	2043-02-17T21:14:33.018	21.52	-19.70	71491.4	-14.59	-16.56