

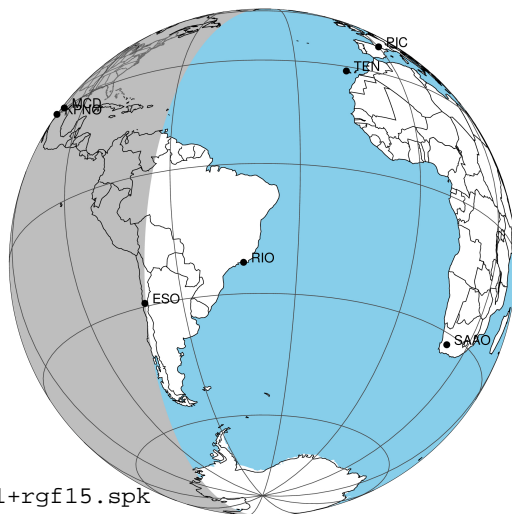
target : Jupiter
 target radius (km) : 71492.00
 C/A epoch : 2043-02-19T10:30:27.190
 Event type : Pgt
 : Jupiter occs: geocentric, topocentric
 : Not a ringed target
 Gaia source ID : 4068709900735278592
 2Mass ID (if available) : 17504920-2257477

Jupiter 2043-02-19T10:30:27 K7.14 G10.17 Pgt

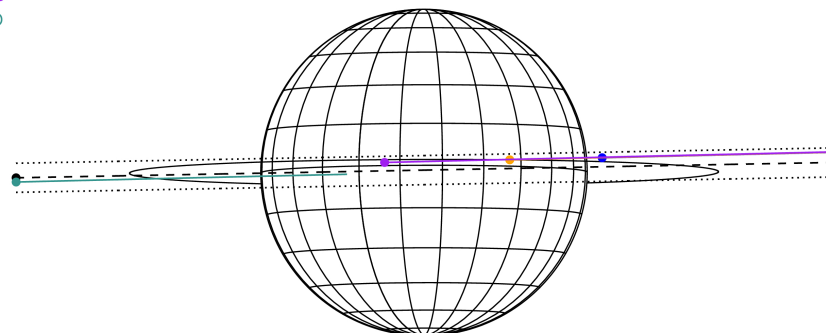
ICRS Star Coord at Epoch: 17h 50m 49.20728s -22:57:47.81692s

RUWE (>1.4 is poor) : 1.70
 K magnitude : 7.141
 G magnitude : 10.173
 RP magnitude : 9.275
 BP magnitude : 11.007
 DUPflag : 0
 Distance (au) : 5.696
 f0 (km) : 0.00
 g0 (km) : 0.00
 skyplane vel. (km/s) : 27.08
 Sun-Target sep (deg) : 62.18
 Sun-Moon sep (deg) : 170.75
 B (ring opening deg) : -2.54
 PA of pole (deg) : 0.15
 Pole direction: RA (deg): 268.05662
 Dec (deg): 64.49732
 C/A sky separation (") : 0.252
 C/A sky separation (km) : 1040.8
 NAIF SPICE kernels : RAJobs_U111+rgf15.spk

Jupiter 2043-02-19T10:30:27 K7.14 G10.17
 Pgt



Earth
 PAL
 KPNO
 MCD
 ESO

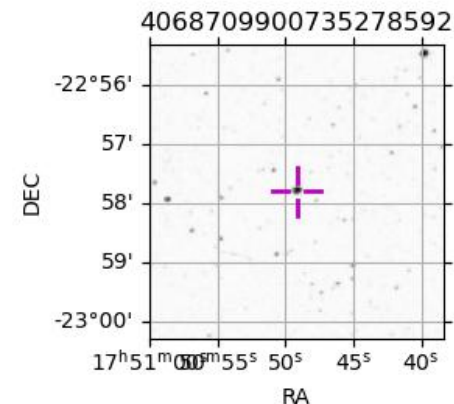


2043-02-19T10:30:27.1900 ex: 17 50 49.2073 s: -22 57 47.817 C/A 0.242" PA 181.11 deg v_sky +27.08 km/s D 05.70 AU

Credit: Styled after SORA/Lucky Star

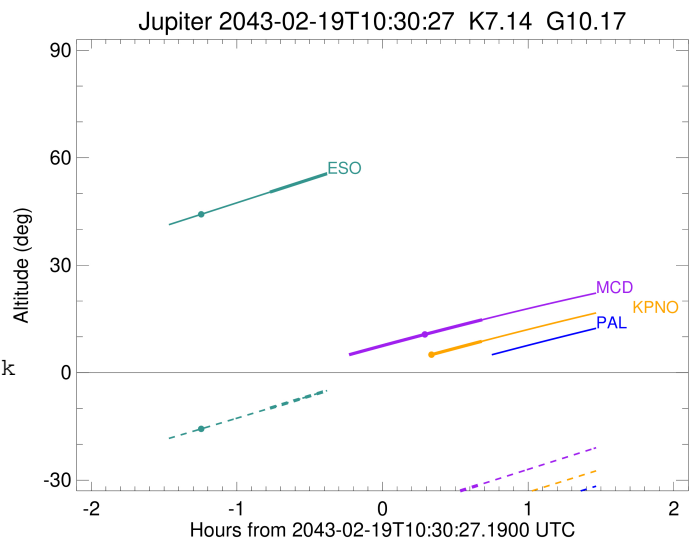
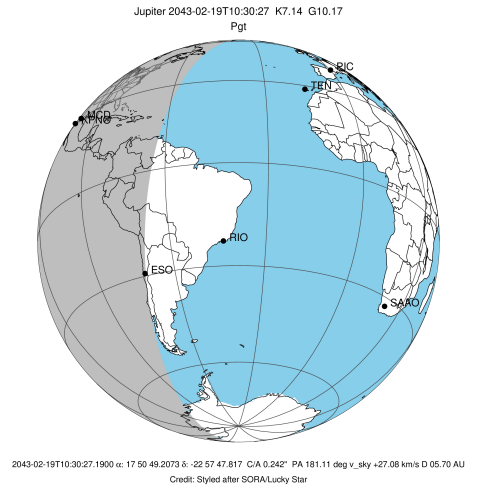
Observable events with sun below -5 deg and altitude above 5 deg

Obs	Location	lat	Elon	Target	Observed Events Interval	OCode
PIC	Pic du Midi	42.9	0.1			Pnn
PAL	Palomar Mt (200")	33.4	243.1			Pnn
PMO	Purple Mtn Obs. Nanking	32.1	118.8			Pnn
KPNO	Kitt Peak Natl Obs	32.0	248.4	+	FEB 19 11:11 - FEB 19 11:11	Pne
MCD	McDonald Obs. 2.7m	30.7	256.0	+	FEB 19 11:11 - FEB 19 11:11	Pne
TEN	Teide Obs./Tenerife	28.3	343.5			Pnn
IRTF	Mauna Kea/IRTF	19.8	204.5			Pnn
KAV	Kavalur Observatory	12.6	78.8			Pnn
RIO	Rio de Janeiro	-22.9	316.8			Pnn
ESO	European Southern Obs. (3.6m)	-29.3	289.3	+	FEB 19 09:44 - FEB 19 09:44	Pin
AAT	Siding Spring (AAT)	-31.3	149.1			Pnn
SAAO	So. Afr. Astro. Obs. (Sutherland)	-32.4	20.8			Pnn
MSO	Mt. Stromlo Observatory	-35.3	149.0			Pnn



```

target                : Jupiter
target radius (km)   : 71492.00
C/A epoch            : 2043-02-19T10:27:12.130
Event type           : Pgt
: Jupiter occs: geocentric, topocentric
: Not a ringed target
Observer code        : KPNO
Location             : Kitt Peak Natl Obs
Latitude (deg)       : 31.96333
E. Longitude (deg)   : 248.40000
Altitude (km)        : 2.120
Gaia source ID       : 4068709900735278592
2Mass ID (if available) : 17504920-2257477
ICRS Star Coord at Epoch: 17h 50m 49.20728s -22:57:47.81692s
RUWE (>1.4 is poor) : 1.70
K magnitude           : 7.141
G magnitude           : 10.173
RP magnitude         : 9.275
BP magnitude         : 11.007
DUPflag              : 0
Distance (au)        : 5.696
f0 (km)              : 0.00
g0 (km)              : 0.00
skyplane vel. (km/s) : 27.08
Sun-Target sep (deg) : 62.18
Sun-Moon sep (deg)   : 171.71
B (ring opening deg) : -2.54
PA of pole (deg)     : 0.15
Pole direction: RA (deg): 268.05662
Dec (deg): 64.49732
C/A sky separation (") : 1.125
C/A sky separation (km) : 4645.9
NAIF SPICE kernels   : RAJobs_U111+rgf15.spk
URKALLv1.spk
naif0012.tls
nep097.bsp
nep101.bsp
sat4401.bsp
de440.bsp
earth_720101_070426.bpc
jup365.bsp
urall6.bsp
IAU_SATURN_for_RINGFIT.tpc
pck00010.tpc
earth_200101_990628_predict.bpc
uranus_ringframes_rfrench20220627_v1.tf
neptune_ringframes_rfrench20220702a_v1.tf
earth_flat_IAU.spk
    
```

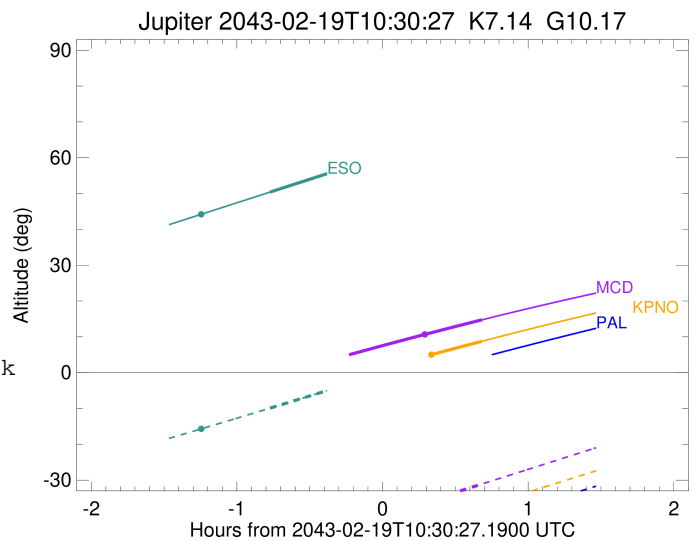
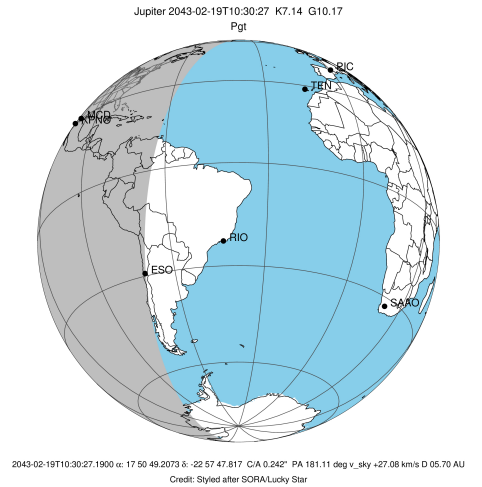


x: target alt < 5.0 deg or sun > -5.0 deg

Target	I/E	UTC	alt	alt-sun	radius	lat-geo	lat-geodetic
Jupiter	I	2043-02-19T09:43:11.549	-7.81x	-54.99	71492.0	2.47	2.83
Jupiter	E	2043-02-19T11:11:21.274	8.75	-37.34	71491.9	4.95	5.66

```

target                : Jupiter
target radius (km)   : 71492.00
C/A epoch             : 2043-02-19T10:27:18.560
Event type            : Pgt
: Jupiter occs: geocentric, topocentric
: Not a ringed target
Observer code         : MCD
Location              : McDonald Obs. 2.7m
Latitude (deg)       : 30.67158
E. Longitude (deg)   : 255.97844
Altitude (km)        : 2.075
Gaia source ID       : 4068709900735278592
2Mass ID (if available) : 17504920-2257477
ICRS Star Coord at Epoch: 17h 50m 49.20728s -22:57:47.81692s
RUWE (>1.4 is poor) : 1.70
K magnitude           : 7.141
G magnitude           : 10.173
RP magnitude          : 9.275
BP magnitude          : 11.007
DUPflag              : 0
Distance (au)        : 5.696
f0 (km)              : 0.00
g0 (km)              : 0.00
skyplane vel. (km/s) : 27.08
Sun-Target sep (deg) : 62.18
Sun-Moon sep (deg)   : 171.72
B (ring opening deg) : -2.54
PA of pole (deg)     : 0.15
Pole direction: RA (deg): 268.05662
Dec (deg): 64.49732
C/A sky separation (") : 1.165
C/A sky separation (km) : 4811.1
NAIF SPICE kernels   : RAJobs_U111+rgf15.spk
URKALLv1.spk
naif0012.tls
nep097.bsp
nep101.bsp
sat4401.bsp
de440.bsp
earth_720101_070426.bpc
jup365.bsp
urall6.bsp
IAU_SATURN_for_RINGFIT.tpc
pck00010.tpc
earth_200101_990628_predict.bpc
uranus_ringframes_rfrench20220627_v1.tf
neptune_ringframes_rfrench20220702a_v1.tf
earth_flat_IAU.spk
    
```

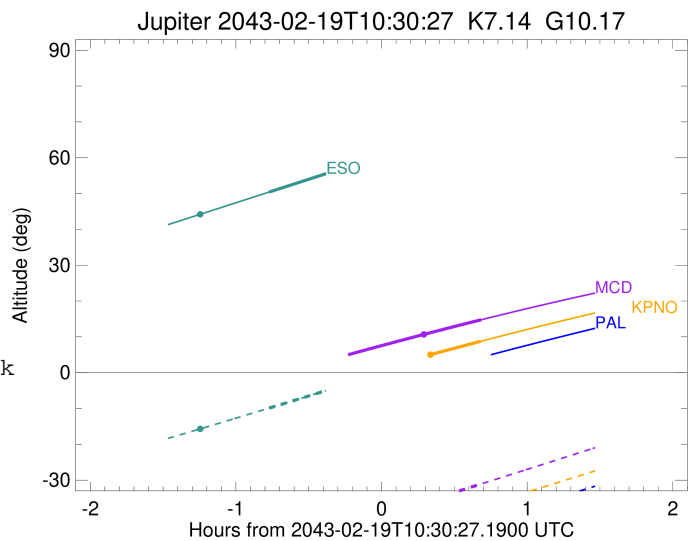
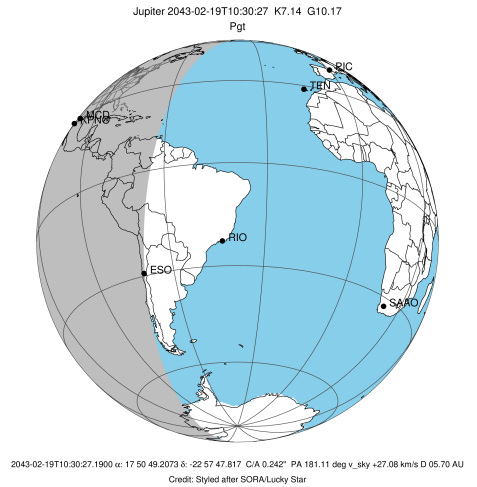


x: target alt < 5.0 deg or sun > -5.0 deg

Target	I/E	UTC	alt	alt-sun	radius	lat-geo	lat-geodetic
Jupiter	I	2043-02-19T09:43:13.251	-1.36x	-49.62	71492.0	2.61	2.99
Jupiter	E	2043-02-19T11:11:32.259	14.77	-31.06	71491.9	5.07	5.80

```

target                : Jupiter
target radius (km)   : 71492.00
C/A epoch            : 2043-02-19T10:28:36.770
Event type          : Pgt
                    : Jupiter occs: geocentric, topocentric
                    : Not a ringed target
Observer code       : ESO
Location            : European Southern Obs. (3.6m)
Latitude (deg)      : -29.26097
E. Longitude (deg)  : 289.26831
Altitude (km)       : 2.400
Gaia source ID      : 4068709900735278592
2Mass ID (if available) : 17504920-2257477
ICRS Star Coord at Epoch: 17h 50m 49.20728s -22:57:47.81692s
RUWE (>1.4 is poor) : 1.70
K magnitude          : 7.141
G magnitude          : 10.173
RP magnitude         : 9.275
BP magnitude         : 11.007
DUPflag             : 0
Distance (au)       : 5.696
f0 (km)              : 0.00
g0 (km)              : 0.00
skyplane vel. (km/s) : 27.08
Sun-Target sep (deg) : 62.18
Sun-Moon sep (deg)  : 171.13
B (ring opening deg) : -2.54
PA of pole (deg)    : 0.15
Pole direction: RA (deg): 268.05662
Dec (deg): 64.49732
C/A sky separation (") : 0.007
C/A sky separation (km) : 26.9
NAIF SPICE kernels  : RAJobs_U111+rgf15.spk
URKALLv1.spk
naif0012.tls
nep097.bsp
nep101.bsp
sat4401.bsp
de440.bsp
earth_720101_070426.bpc
jup365.bsp
urall6.bsp
IAU_SATURN_for_RINGFIT.tpc
pck00010.tpc
earth_200101_990628_predict.bpc
uranus_ringframes_rfrench20220627_v1.tf
neptune_ringframes_rfrench20220702a_v1.tf
earth_flat_IAU.spk
    
```



x: target alt < 5.0 deg or sun > -5.0 deg

Target	I/E	UTC	alt	alt-sun	radius	lat-geo	lat-geodetic
Jupiter	I	2043-02-19T09:44:06.169	50.40	-9.91	71492.0	-1.16	-1.33
Jupiter	E	2043-02-19T11:13:13.098	69.80	9.00x	71492.0	1.07	1.22