

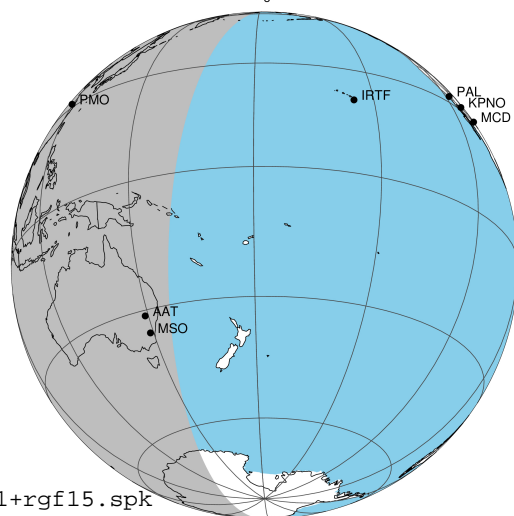
target : Jupiter  
 target radius (km) : 71492.00  
 C/A epoch : 2043-02-25T19:25:15.310  
 Event type : Pgt  
 : Jupiter occs: geocentric, topocentric  
 : Not a ringed target  
 Gaia source ID : 4070143625118451328  
 2Mass ID (if available) : 17550025-2258309

Jupiter 2043-02-25T19:25:15 K9.25 G14.59 Pgt

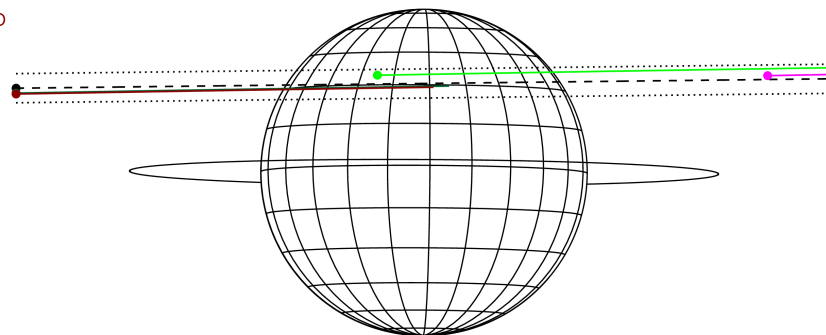
ICRS Star Coord at Epoch: 17h 55m 00.25433s -22:58:31.15282s

RUWE (>1.4 is poor) : 0.96  
 K magnitude : 9.247  
 G magnitude : 14.594  
 RP magnitude : 13.289  
 BP magnitude : 16.590  
 DUPflag : 0  
 Distance (au) : 5.602  
 f0 (km) : 0.00  
 g0 (km) : 0.00  
 skyplane vel. (km/s) : 24.52  
 Sun-Target sep (deg) : 67.63  
 Sun-Moon sep (deg) : 90.60  
 B (ring opening deg) : -2.53  
 PA of pole (deg) : -0.30  
 Pole direction: RA (deg): 268.05662  
 Dec (deg): 64.49732  
 C/A sky separation (") : 9.598  
 C/A sky separation (km) : 38994.4  
 NAIF SPICE kernels : RAJobs\_U111+rgf15.spk

Jupiter 2043-02-25T19:25:15 K9.25 G14.59  
 Pgt



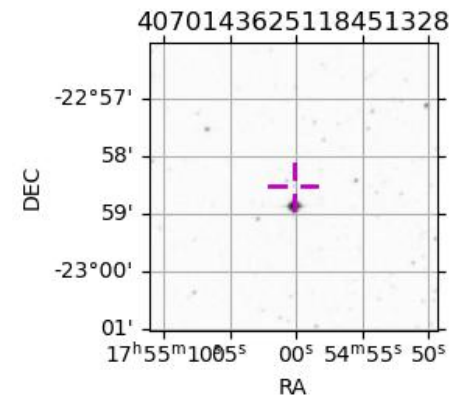
Earth  
 PMO  
 KAV  
 AAT  
 MSO



2043-02-25T19:25:15.3100 c: 17 55 00.2543 s: -22 58 31.153 C/A 9.588 PA 180.66 deg v\_sky +24.52 km/s D 05.60 AU  
 Credit: Styled after SORA/Lucky Star

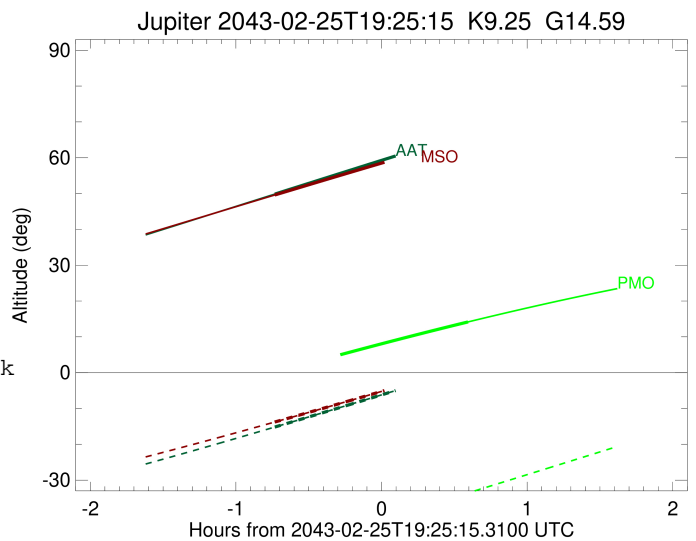
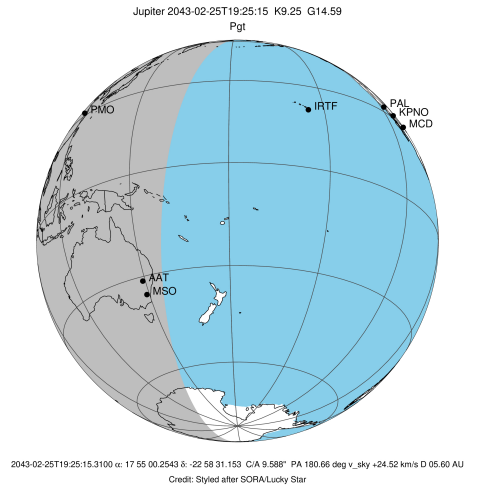
Observable events with sun below -5 deg and altitude above 5 deg

Obs	Location	lat	Elon	Target	Observed Events Interval	OEncode
PIC	Pic du Midi	42.9	0.1			Pnn
PAL	Palomar Mt (200")	33.4	243.1			Pnn
PMO	Purple Mtn Obs. Nanking	32.1	118.8	+	FEB 25 20:00 - FEB 25 20:00	Pne
KPNO	Kitt Peak Natl Obs	32.0	248.4			Pnn
MCD	McDonald Obs. 2.7m	30.7	256.0			Pnn
TEN	Teide Obs./Tenerife	28.3	343.5			Pnn
IRTF	Mauna Kea/IRTF	19.8	204.5			Pnn
KAV	Kavalur Observatory	12.6	78.8			Pnn
RIO	Rio de Janeiro	-22.9	316.8			Pnn
ESO	European Southern Obs. (3.6m)	-29.3	289.3			Pnn
AAT	Siding Spring (AAT)	-31.3	149.1	+	FEB 25 18:41 - FEB 25 18:41	Pin
SAAO	So. Afr. Astro. Obs. (Sutherland)	-32.4	20.8			Pnn
MSO	Mt. Stromlo Observatory	-35.3	149.0	+	FEB 25 18:41 - FEB 25 18:41	Pin



```

target                : Jupiter
target radius (km)   : 71492.00
C/A epoch            : 2043-02-25T19:21:44.780
Event type          : Pgt
                    : Jupiter occs: geocentric, topocentric
                    : Not a ringed target
Observer code       : PMO
Location            : Purple Mtn Obs. Nanking
Latitude (deg)      : 32.06667
E. Longitude (deg)  : 118.82089
Altitude (km)       : 0.364
Gaia source ID      : 4070143625118451328
2Mass ID (if available) : 17550025-2258309
ICRS Star Coord at Epoch: 17h 55m 00.25433s -22:58:31.15282s
RUWE (>1.4 is poor) : 0.96
K magnitude          : 9.247
G magnitude          : 14.594
RP magnitude         : 13.289
BP magnitude         : 16.590
DUPflag             : 0
Distance (au)       : 5.602
f0 (km)              : 0.00
g0 (km)              : 0.00
skyplane vel. (km/s) : 24.52
Sun-Target sep (deg) : 67.63
Sun-Moon sep (deg)  : 90.74
B (ring opening deg) : -2.53
PA of pole (deg)    : -0.30
Pole direction: RA (deg): 268.05662
Dec (deg): 64.49732
C/A sky separation (" ) : 10.575
C/A sky separation (km) : 42967.4
NAIF SPICE kernels  : RAJobs_U111+rgf15.spk
URKALLv1.spk
naif0012.tls
nep097.bsp
nep101.bsp
sat4401.bsp
de440.bsp
earth_720101_070426.bpc
jup365.bsp
urall6.bsp
IAU_SATURN_for_RINGFIT.tpc
pck00010.tpc
earth_200101_990628_predict.bpc
uranus_ringframes_rfrench20220627_v1.tf
neptune_ringframes_rfrench20220702a_v1.tf
earth_flat_IAU.spk
    
```

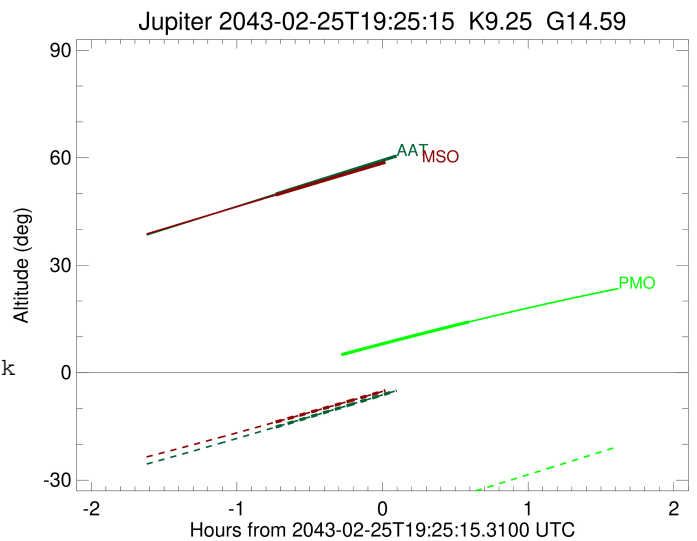
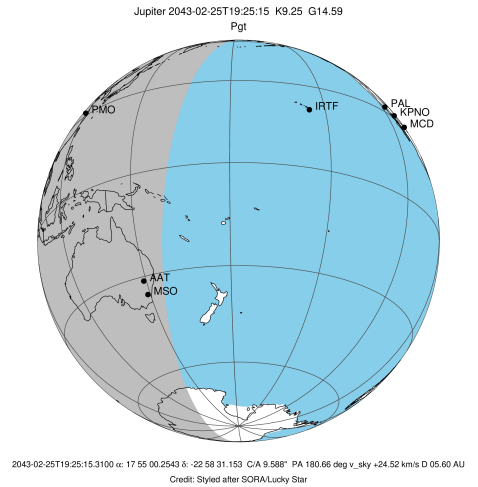


x: target alt < 5.0 deg or sun > -5.0 deg

Target	I/E	UTC	alt	alt-sun	radius	lat-geo	lat-geodetic
Jupiter	I	2043-02-25T18:42:41.750	0.25x	-49.31	71489.0	35.60	39.22
Jupiter	E	2043-02-25T20:00:55.005	14.16	-33.57	71488.7	38.18	41.86

```

target                : Jupiter
target radius (km)   : 71492.00
C/A epoch            : 2043-02-25T19:23:05.560
Event type          : Pgt
                    : Jupiter occs: geocentric, topocentric
                    : Not a ringed target
Observer code       : AAT
Location            : Siding Spring (AAT)
Latitude (deg)      : -31.27703
E. Longitude (deg)  : 149.06608
Altitude (km)       : 1.164
Gaia source ID      : 4070143625118451328
2Mass ID (if available) : 17550025-2258309
ICRS Star Coord at Epoch: 17h 55m 00.25433s -22:58:31.15282s
RUWE (>1.4 is poor) : 0.96
K magnitude          : 9.247
G magnitude          : 14.594
RP magnitude         : 13.289
BP magnitude         : 16.590
DUPflag             : 0
Distance (au)       : 5.602
f0 (km)              : 0.00
g0 (km)              : 0.00
skyplane vel. (km/s) : 24.52
Sun-Target sep (deg) : 67.63
Sun-Moon sep (deg)  : 91.40
B (ring opening deg) : -2.53
PA of pole (deg)    : -0.30
Pole direction: RA (deg): 268.05662
Dec (deg): 64.49732
C/A sky separation (" ) : 9.281
C/A sky separation (km) : 37708.4
NAIF SPICE kernels  : RAJobs_U111+rgf15.spk
URKALLv1.spk
naif0012.tls
nep097.bsp
nep101.bsp
sat4401.bsp
de440.bsp
earth_720101_070426.bpc
jup365.bsp
urall6.bsp
IAU_SATURN_for_RINGFIT.tpc
pck00010.tpc
earth_200101_990628_predict.bpc
uranus_ringframes_rfrench20220627_v1.tf
neptune_ringframes_rfrench20220702a_v1.tf
earth_flat_IAU.spk
    
```

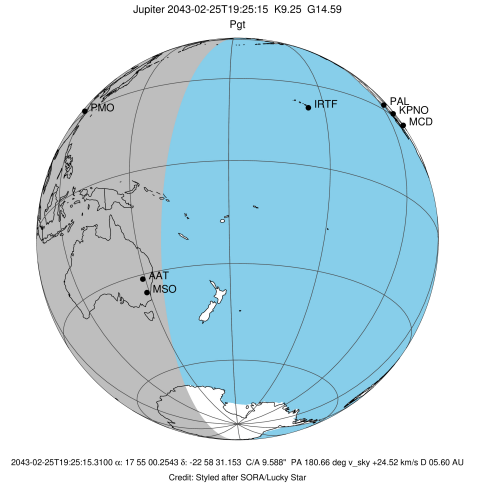


x: target alt < 5.0 deg or sun > -5.0 deg

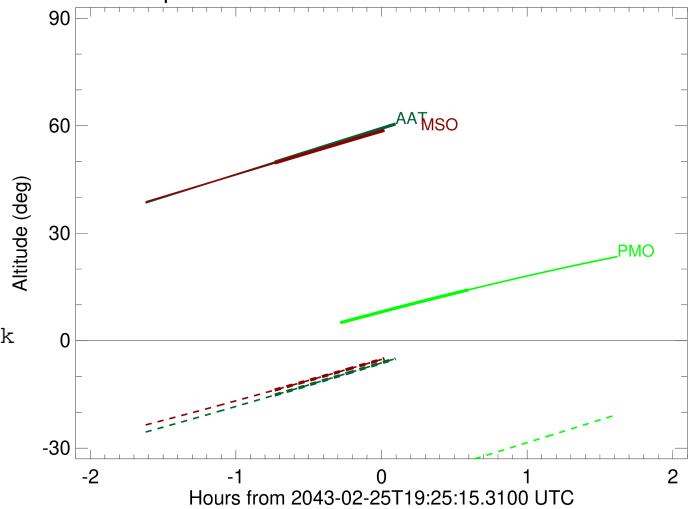
Target	I/E	UTC	alt	alt-sun	radius	lat-geo	lat-geodetic
Jupiter	I	2043-02-25T18:41:17.046	49.84	-15.18	71489.7	30.60	34.01
Jupiter	E	2043-02-25T20:04:59.812	67.61	2.12x	71489.4	32.94	36.46

```

target                : Jupiter
target radius (km)   : 71492.00
C/A epoch            : 2043-02-25T19:23:11.520
Event type           : Pgt
: Jupiter occs: geocentric, topocentric
: Not a ringed target
Observer code        : MSO
Location             : Mt. Stromlo Observatory
Latitude (deg)       : -35.32000
E. Longitude (deg)   : 149.00833
Altitude (km)        : 0.770
Gaia source ID       : 4070143625118451328
2Mass ID (if available) : 17550025-2258309
ICRS Star Coord at Epoch: 17h 55m 00.25433s -22:58:31.15282s
RUWE (>1.4 is poor) : 0.96
K magnitude           : 9.247
G magnitude           : 14.594
RP magnitude         : 13.289
BP magnitude         : 16.590
DUPflag              : 0
Distance (au)        : 5.602
f0 (km)               : 0.00
g0 (km)               : 0.00
skyplane vel. (km/s) : 24.52
Sun-Target sep (deg) : 67.63
Sun-Moon sep (deg)   : 91.39
B (ring opening deg) : -2.53
PA of pole (deg)     : -0.30
Pole direction: RA (deg): 268.05662
Dec (deg): 64.49732
C/A sky separation (") : 9.177
C/A sky separation (km) : 37284.1
NAIF SPICE kernels   : RAJobs_U111+rgf15.spk
URKALLv1.spk
naif0012.tls
nep097.bsp
nep101.bsp
sat4401.bsp
de440.bsp
earth_720101_070426.bpc
jup365.bsp
urall6.bsp
IAU_SATURN_for_RINGFIT.tpc
pck00010.tpc
earth_200101_990628_predict.bpc
uranus_ringframes_rfrench20220627_v1.tf
neptune_ringframes_rfrench20220702a_v1.tf
earth_flat_IAU.spk
    
```



Jupiter 2043-02-25T19:25:15 K9.25 G14.59



x: target alt < 5.0 deg or sun > -5.0 deg

Target	I/E	UTC	alt	alt-sun	radius	lat-geo	lat-geodetic
Jupiter	I	2043-02-25T18:41:13.707	49.58	-13.78	71489.8	30.21	33.60
Jupiter	E	2043-02-25T20:05:14.910	66.24	2.75x	71489.5	32.54	36.04