

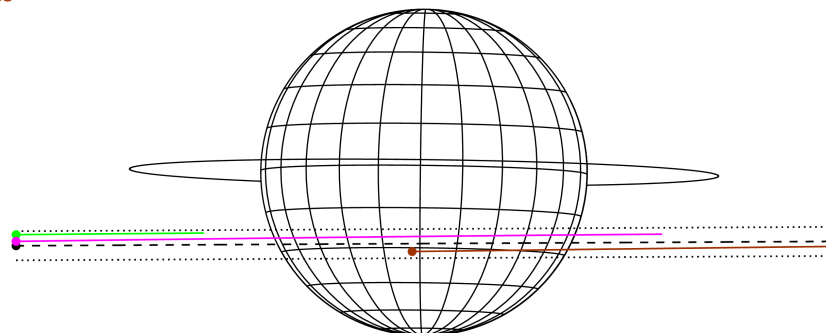
target : Jupiter  
 target radius (km) : 71492.00  
 C/A epoch : 2043-03-03T23:23:54.170  
 Event type : Pgt  
 : Jupiter occs: geocentric, topocentric  
 : Not a ringed target  
 Gaia source ID : 4069447879086908416  
 2Mass ID (if available) : 17584260-2259144

Jupiter 2043-03-03T23:23:54 K5.17 G14.66 Pgt

ICRS Star Coord at Epoch: 17h 58m 42.60177s -22:59:14.48648s  
 RUWE (>1.4 is poor) : 1.19  
 K magnitude : 5.166  
 G magnitude : 14.657  
 RP magnitude : 12.899  
 BP magnitude : 19.911  
 DUPflag : 0  
 Distance (au) : 5.508  
 f0 (km) : 0.00  
 g0 (km) : 0.00  
 skyplane vel. (km/s) : 21.91  
 Sun-Target sep (deg) : 72.97  
 Sun-Moon sep (deg) : 18.54  
 B (ring opening deg) : -2.51  
 PA of pole (deg) : -0.70  
 Pole direction: RA (deg): 268.05662  
 Dec (deg): 64.49732  
 C/A sky separation (") : 7.795  
 C/A sky separation (km) : 31139.8  
 NAIF SPICE kernels : RAJobs\_U111+rgf15.spk



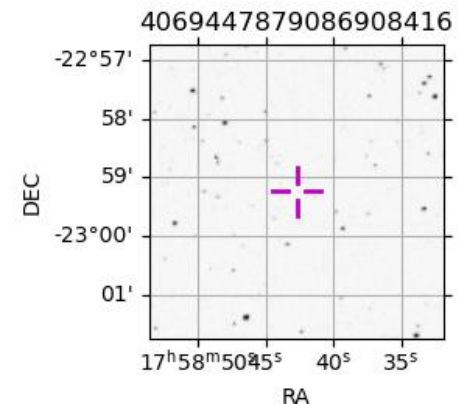
Earth  
 PMO  
 KAV  
 SAAO



2043-03-03T23:23:54.1700 a: 17 58 42.6018 & -22 59 14.486 C/A 7.805" PA 0.30 deg v\_sky +21.91 km/s D 05:51 AU  
 Credit: Styled after SORA/Lucky Star

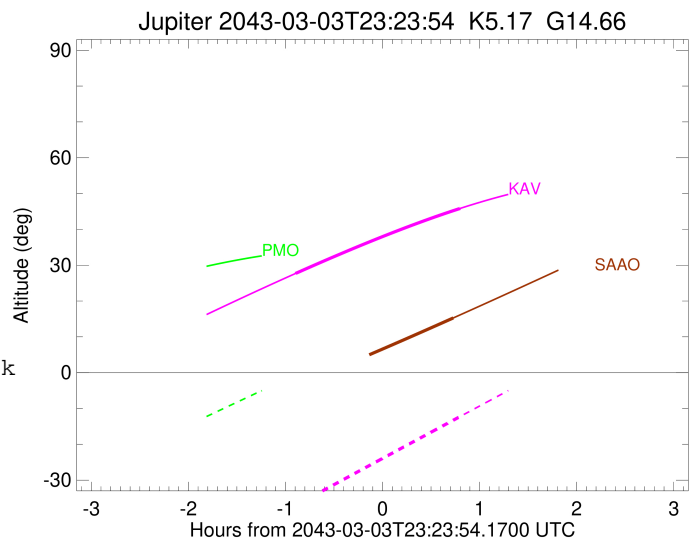
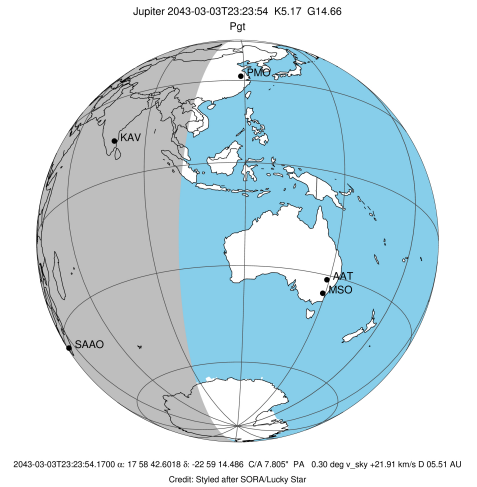
Observable events with sun below -5 deg and altitude above 5 deg

Obs	Location	lat	Elon	Target	Observed Events Interval	OEcode
PIC	Pic du Midi	42.9	0.1			Pnn
PAL	Palomar Mt (200")	33.4	243.1			Pnn
PMO	Purple Mtn Obs. Nanking	32.1	118.8			Pnn
KPNO	Kitt Peak Natl Obs	32.0	248.4			Pnn
MCD	McDonald Obs. 2.7m	30.7	256.0			Pnn
TEN	Teide Obs./Tenerife	28.3	343.5			Pnn
IRTF	Mauna Kea/IRTF	19.8	204.5			Pnn
KAV	Kavalur Observatory	12.6	78.8	+ +	MAR 03 22:30 - MAR 04 00:11	Pie
RIO	Rio de Janeiro	-22.9	316.8			Pnn
ESO	European Southern Obs. (3.6m)	-29.3	289.3			Pnn
AAT	Siding Spring (AAT)	-31.3	149.1			Pnn
SAAO	So. Afr. Astro. Obs. (Sutherland)	-32.4	20.8	+	MAR 04 00:07 - MAR 04 00:07	Pne
MSO	Mt. Stromlo Observatory	-35.3	149.0			Pnn



```

target                : Jupiter
target radius (km)   : 71492.00
C/A epoch            : 2043-03-03T23:20:59.650
Event type           : Pgt
: Jupiter occs: geocentric, topocentric
: Not a ringed target
Observer code        : KAV
Location             : Kavalur Observatory
Latitude (deg)       : 12.57556
E. Longitude (deg)   : 78.83167
Altitude (km)        : 0.722
Gaia source ID       : 4069447879086908416
2Mass ID (if available) : 17584260-2259144
ICRS Star Coord at Epoch: 17h 58m 42.60177s -22:59:14.48648s
RUWE (>1.4 is poor) : 1.19
K magnitude          : 5.166
G magnitude          : 14.657
RP magnitude         : 12.899
BP magnitude         : 19.911
DUPflag             : 0
Distance (au)        : 5.508
f0 (km)              : 0.00
g0 (km)              : 0.00
skyplane vel. (km/s) : 21.91
Sun-Target sep (deg) : 72.97
Sun-Moon sep (deg)   : 18.34
B (ring opening deg) : -2.51
PA of pole (deg)     : -0.70
Pole direction: RA (deg): 268.05662
Dec (deg): 64.49732
C/A sky separation (") : 7.009
C/A sky separation (km) : 27999.2
NAIF SPICE kernels   : RAJobs_U111+rgf15.spk
URKALLv1.spk
naif0012.tls
nep097.bsp
nep101.bsp
sat4401.bsp
de440.bsp
earth_720101_070426.bpc
jup365.bsp
urall6.bsp
IAU_SATURN_for_RINGFIT.tpc
pck00010.tpc
earth_200101_990628_predict.bpc
uranus_ringframes_rfrench20220627_v1.tf
neptune_ringframes_rfrench20220702a_v1.tf
earth_flat_IAU.spk
    
```

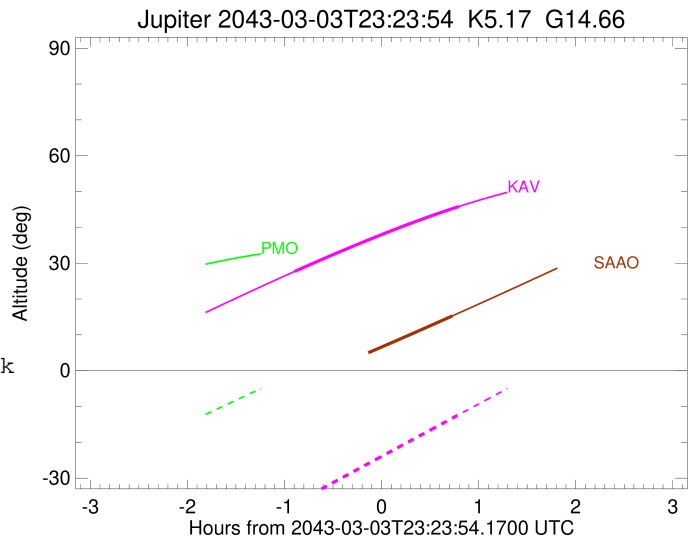
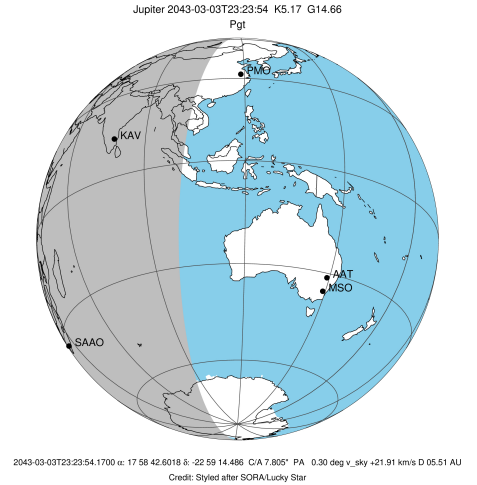


x: target alt < 5.0 deg or sun > -5.0 deg

Target	I/E	UTC	alt	alt-sun	radius	lat-geo	lat-geodetic
Jupiter	I	2043-03-03T22:30:16.507	27.71	-37.03	71490.5	-24.38	-27.35
Jupiter	E	2043-03-04T00:11:54.251	45.84	-12.23	71490.8	-21.77	-24.52

```

target                : Jupiter
target radius (km)   : 71492.00
C/A epoch            : 2043-03-03T23:20:01.430
Event type           : Pgt
: Jupiter occs: geocentric, topocentric
: Not a ringed target
Observer code        : SAAO
Location              : So. Afr. Astro. Obs. (Sutherland)
Latitude (deg)       : -32.37953
E. Longitude (deg)   : 20.81070
Altitude (km)        : 1.768
Gaia source ID       : 4069447879086908416
2Mass ID (if available) : 17584260-2259144
ICRS Star Coord at Epoch: 17h 58m 42.60177s -22:59:14.48648s
RUWE (>1.4 is poor) : 1.19
K magnitude           : 5.166
G magnitude           : 14.657
RP magnitude         : 12.899
BP magnitude         : 19.911
DUPflag              : 0
Distance (au)        : 5.508
f0 (km)               : 0.00
g0 (km)               : 0.00
skyplane vel. (km/s) : 21.91
Sun-Target sep (deg) : 72.97
Sun-Moon sep (deg)   : 17.74
B (ring opening deg) : -2.51
PA of pole (deg)     : -0.70
Pole direction: RA (deg): 268.05662
Dec (deg): 64.49732
C/A sky separation (") : 8.652
C/A sky separation (km) : 34560.2
NAIF SPICE kernels   : RAJobs_U111+rgf15.spk
URKALLv1.spk
naif0012.tls
nep097.bsp
nep101.bsp
sat4401.bsp
de440.bsp
earth_720101_070426.bpc
jup365.bsp
urall6.bsp
IAU_SATURN_for_RINGFIT.tpc
pck00010.tpc
earth_200101_990628_predict.bpc
uranus_ringframes_rfrench20220627_v1.tf
neptune_ringframes_rfrench20220702a_v1.tf
earth_flat_IAU.spk
    
```



x: target alt < 5.0 deg or sun > -5.0 deg

Target	I/E	UTC	alt	alt-sun	radius	lat-geo	lat-geodetic
Jupiter	I	2043-03-03T22:32:38.951	-3.15x	-51.03	71489.8	-30.27	-33.66
Jupiter	E	2043-03-04T00:07:36.359	15.26	-46.90	71490.2	-27.48	-30.69