

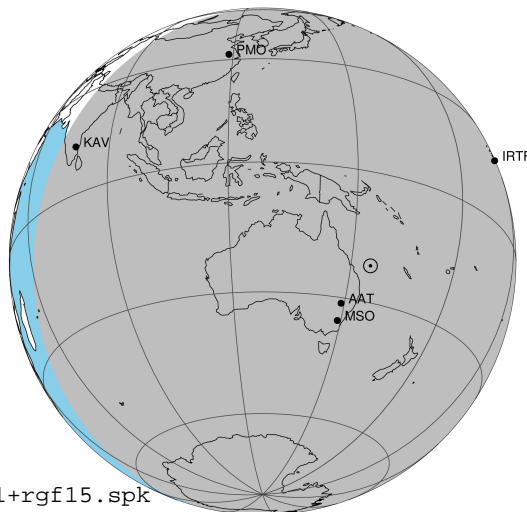
target : Jupiter
 target radius (km) : 71492.00
 C/A epoch : 2043-07-13T13:45:19.000
 Event type : Pgt
 : Jupiter occs: geocentric, topocentric
 : Not a ringed target
 Gaia source ID : 4116555488404257408
 2Mass ID (if available) : 17392945-2303378

Jupiter 2043-07-13T13:45:19 K7.35 G13.41 Pgt

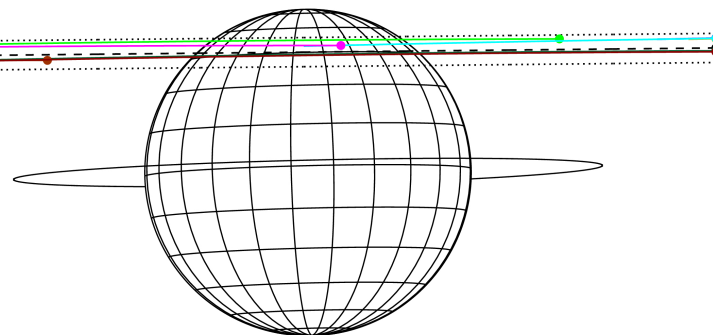
ICRS Star Coord at Epoch: 17h 39m 29.45324s -23:03:37.87511s

RUWE (>1.4 is poor) : 0.78
 K magnitude : 7.347
 G magnitude : 13.407
 RP magnitude : 11.937
 BP magnitude : 16.458
 DUPflag : 0
 Distance (au) : 4.321
 f0 (km) : 0.00
 g0 (km) : 0.00
 skyplane vel. (km/s) : -13.67
 Sun-Target sep (deg) : 154.79
 Sun-Moon sep (deg) : 70.37
 B (ring opening deg) : -2.41
 PA of pole (deg) : 1.37
 Pole direction: RA (deg): 268.05670
 Dec (deg): 64.49732
 C/A sky separation (") : 16.831
 C/A sky separation (km) : 52743.0
 NAIF SPICE kernels : RAJobs_U111+rgf15.spk

Jupiter 2043-07-13T13:45:19 K7.35 G13.41
 Pgt



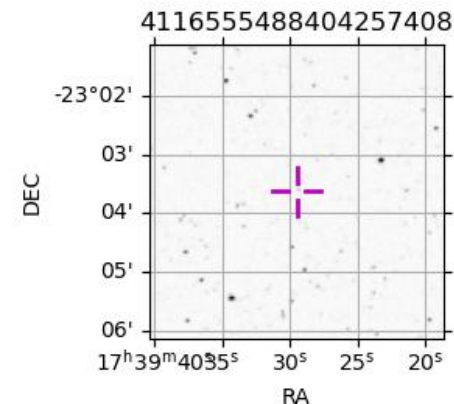
Earth
 PAL
 PMO
 KPNO
 IRTF
 KAV
 AAT
 SAAO
 MSO



2043-07-13T13:45:19.0000 a: 17 39 29.4532 s: -23 03 37.875 C/A ***** PA 180.58 deg v_sky -13.67 km/s D 04.32 AU
 Credit: Styled after SORA/Lucky Star

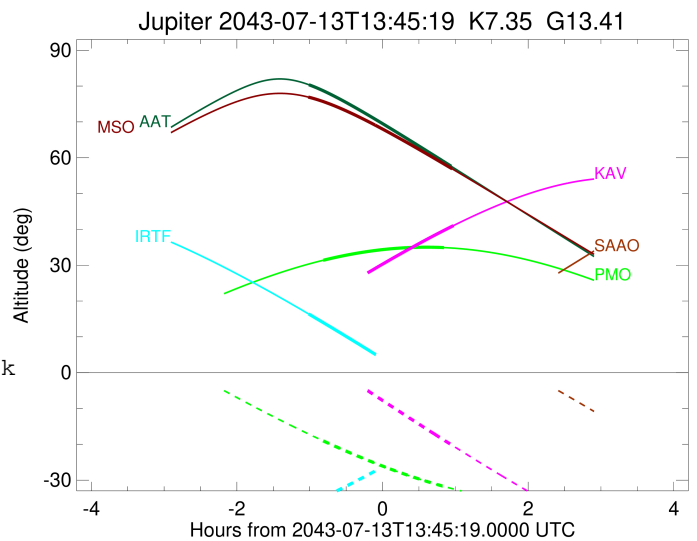
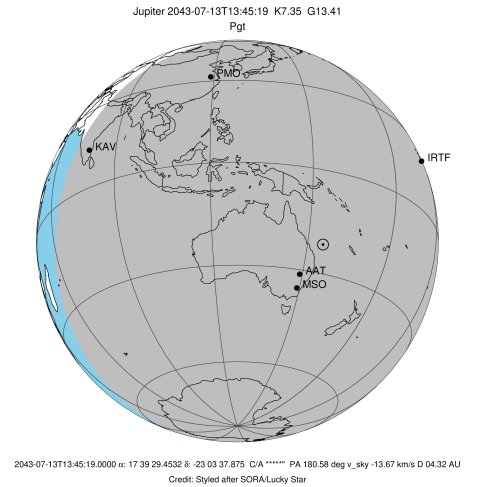
Observable events with sun below -5 deg and altitude above 5 deg

| Obs | Location | lat | Elon | Target | Observed Events Interval | OCode |
|------|-----------------------------------|-------|-------|--------|-----------------------------|-------|
| PIC | Pic du Midi | 42.9 | 0.1 | | | Pnn |
| PAL | Palomar Mt (200") | 33.4 | 243.1 | | | Pnn |
| PMO | Purple Mtn Obs. Nanking | 32.1 | 118.8 | + + | JUL 13 12:56 - JUL 13 14:35 | Pie |
| KPNO | Kitt Peak Natl Obs | 32.0 | 248.4 | | | Pnn |
| MCD | McDonald Obs. 2.7m | 30.7 | 256.0 | | | Pnn |
| TEN | Teide Obs./Tenerife | 28.3 | 343.5 | | | Pnn |
| IRTF | Mauna Kea/IRTF | 19.8 | 204.5 | + | JUL 13 12:44 - JUL 13 12:44 | Pin |
| KAV | Kavalur Observatory | 12.6 | 78.8 | + | JUL 13 14:43 - JUL 13 14:43 | Pne |
| RIO | Rio de Janeiro | -22.9 | 316.8 | | | Pnn |
| ESO | European Southern Obs. (3.6m) | -29.3 | 289.3 | | | Pnn |
| AAT | Siding Spring (AAT) | -31.3 | 149.1 | + + | JUL 13 12:44 - JUL 13 14:41 | Pie |
| SAAO | So. Afr. Astro. Obs. (Sutherland) | -32.4 | 20.8 | | | Pnn |
| MSO | Mt. Stromlo Observatory | -35.3 | 149.0 | + + | JUL 13 12:44 - JUL 13 14:42 | Pie |




```

target                : Jupiter
target radius (km)   : 71492.00
C/A epoch             : 2043-07-13T13:43:17.440
Event type            : Pgt
: Jupiter occs: geocentric, topocentric
: Not a ringed target
Observer code         : MSO
Location              : Mt. Stromlo Observatory
Latitude (deg)       : -35.32000
E. Longitude (deg)   : 149.00833
Altitude (km)        : 0.770
Gaia source ID       : 4116555488404257408
2Mass ID (if available) : 17392945-2303378
ICRS Star Coord at Epoch: 17h 39m 29.45324s -23:03:37.87511s
RUWE (>1.4 is poor) : 0.78
K magnitude           : 7.347
G magnitude           : 13.407
RP magnitude          : 11.937
BP magnitude          : 16.458
DUPflag              : 0
Distance (au)        : 4.321
f0 (km)              : 0.00
g0 (km)              : 0.00
skyplane vel. (km/s) : -13.67
Sun-Target sep (deg) : 154.79
Sun-Moon sep (deg)   : 71.26
B (ring opening deg) : -2.41
PA of pole (deg)     : 1.37
Pole direction: RA (deg): 268.05670
Dec (deg): 64.49732
C/A sky separation (") : 16.367
C/A sky separation (km) : 51291.4
NAIF SPICE kernels   : RAJobs_U111+rgf15.spk
URKALLv1.spk
naif0012.tls
nep097.bsp
nep101.bsp
sat4401.bsp
de440.bsp
earth_720101_070426.bpc
jup365.bsp
urall6.bsp
IAU_SATURN_for_RINGFIT.tpc
pck00010.tpc
earth_200101_990628_predict.bpc
uranus_ringframes_rfrench20220627_v1.tf
neptune_ringframes_rfrench20220702a_v1.tf
earth_flat_IAU.spk
    
```



x: target alt < 5.0 deg or sun > -5.0 deg

| Target | I/E | UTC | alt | alt-sun | radius | lat-geo | lat-geodetic |
|---------|-----|-------------------------|-------|---------|---------|---------|--------------|
| Jupiter | I | 2043-07-13T12:44:05.990 | 76.93 | -67.01 | 71488.0 | 45.14 | 48.84 |
| Jupiter | E | 2043-07-13T14:42:39.554 | 56.90 | -74.82 | 71487.9 | 46.30 | 49.99 |