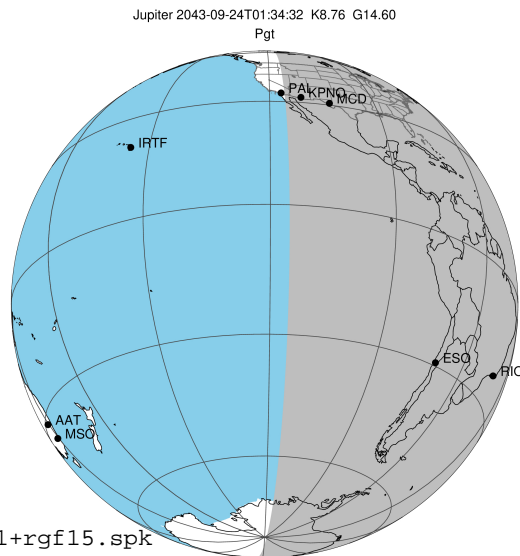


target : Jupiter
 target radius (km) : 71492.00
 C/A epoch : 2043-09-24T01:34:32.760
 Event type : Pgt
 : Jupiter occs: geocentric, topocentric
 : Not a ringed target
 Gaia source ID : 4116714475273089664
 2Mass ID (if available) : 17375220-2313494

Jupiter 2043-09-24T01:34:32 K8.76 G14.60 Pgt

ICRS Star Coord at Epoch: 17h 37m 52.19897s -23:13:49.58026s

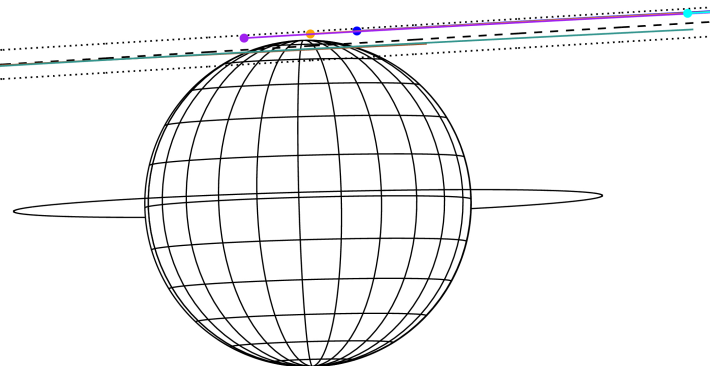
RUWE (>1.4 is poor) : 0.88
 K magnitude : 8.760
 G magnitude : 14.600
 RP magnitude : 13.234
 BP magnitude : 16.786
 DUPflag : 0
 Distance (au) : 5.231
 f0 (km) : 0.00
 g0 (km) : 0.00
 skyplane vel. (km/s) : 15.88
 Sun-Target sep (deg) : 84.61
 Sun-Moon sep (deg) : 161.97
 B (ring opening deg) : -2.23
 PA of pole (deg) : 1.55
 Pole direction: RA (deg): 268.05674
 Dec (deg): 64.49731
 C/A sky separation (") : 18.146
 C/A sky separation (km) : 68841.6
 NAIF SPICE kernels : RAJobs_U111+rgf15.spk



2043-09-24T01:34:32.7600 @: 17 37 52.1990 @: -23 13 49.580 C/A ***** PA 183.44 deg v_sky +15.88 km/s D 05.23 AU
 Credit: Styled after SORA/Lucky Star

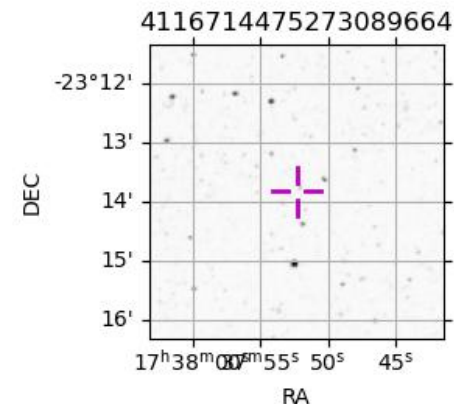
Earth

- PAL
- KPNO
- MCD
- TEN
- IRTF
- RIO
- ESO
- SAOO



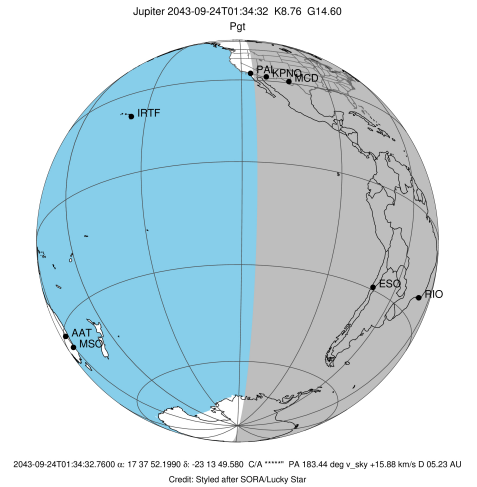
Observable events with sun below -5 deg and altitude above 5 deg

Obs	Location	lat	Elon	Target	Observed Events Interval	OCode
PIC	Pic du Midi	42.9	0.1			Pnn
PAL	Palomar Mt (200")	33.4	243.1			Pnn
PMO	Purple Mtn Obs. Nanking	32.1	118.8			Pnn
KPNO	Kitt Peak Natl Obs	32.0	248.4			Pnn
MCD	McDonald Obs. 2.7m	30.7	256.0			Pnn
TEN	Teide Obs./Tenerife	28.3	343.5			Pnn
IRTF	Mauna Kea/IRTF	19.8	204.5			Pnn
KAV	Kavalur Observatory	12.6	78.8			Pnn
RIO	Rio de Janeiro	-22.9	316.8	+ +	SEP 24 01:15 - SEP 24 02:06	Pie
ESO	European Southern Obs. (3.6m)	-29.3	289.3	+ +	SEP 24 01:14 - SEP 24 02:04	Pie
AAT	Siding Spring (AAT)	-31.3	149.1			Pnn
SAAO	So. Afr. Astro. Obs. (Sutherland)	-32.4	20.8			Pnn
MSO	Mt. Stromlo Observatory	-35.3	149.0			Pnn

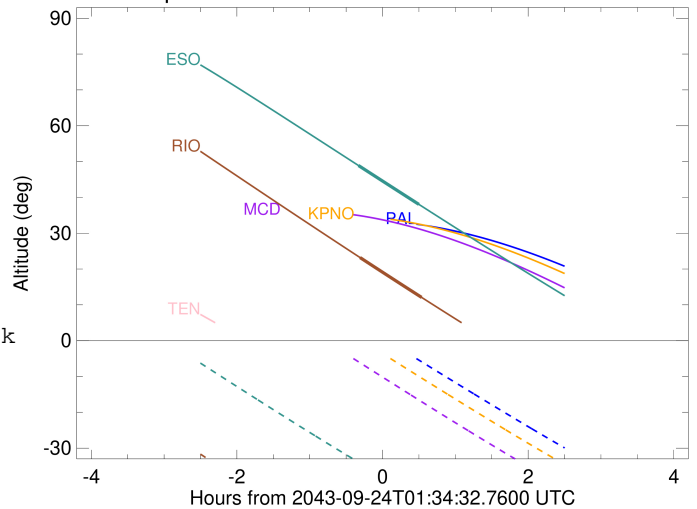


```

target                : Jupiter
target radius (km)   : 71492.00
C/A epoch             : 2043-09-24T01:41:26.550
Event type           : Pgt
: Jupiter occs: geocentric, topocentric
: Not a ringed target
Observer code        : RIO
Location             : Rio de Janeiro
Latitude (deg)       : -22.89506
E. Longitude (deg)   : 316.77708
Altitude (km)        : 0.033
Gaia source ID       : 4116714475273089664
2Mass ID (if available) : 17375220-2313494
ICRS Star Coord at Epoch: 17h 37m 52.19897s -23:13:49.58026s
RUWE (>1.4 is poor) : 0.88
K magnitude           : 8.760
G magnitude           : 14.600
RP magnitude          : 13.234
BP magnitude          : 16.786
DUPflag              : 0
Distance (au)        : 5.231
f0 (km)              : 0.00
g0 (km)              : 0.00
skyplane vel. (km/s) : 15.88
Sun-Target sep (deg) : 84.61
Sun-Moon sep (deg)   : 162.82
B (ring opening deg) : -2.23
PA of pole (deg)     : 1.55
Pole direction: RA (deg): 268.05674
Dec (deg): 64.49731
C/A sky separation (") : 17.742
C/A sky separation (km) : 67312.5
NAIF SPICE kernels   : RAJobs_U111+rgf15.spk
URKALLv1.spk
naif0012.tls
nep097.bsp
nep101.bsp
sat4401.bsp
de440.bsp
earth_720101_070426.bpc
jup365.bsp
urall6.bsp
IAU_SATURN_for_RINGFIT.tpc
pck00010.tpc
earth_200101_990628_predict.bpc
uranus_ringframes_rfrench20220627_v1.tf
neptune_ringframes_rfrench20220702a_v1.tf
earth_flat_IAU.spk
    
```



Jupiter 2043-09-24T01:34:32 K8.76 G14.60

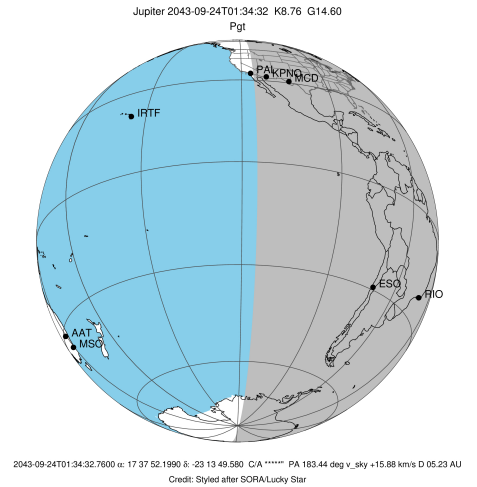


x: target alt < 5.0 deg or sun > -5.0 deg

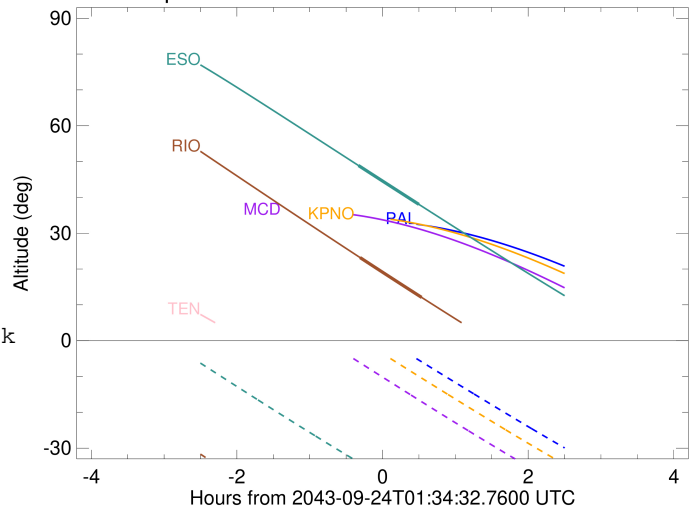
Target	I/E	UTC	alt	alt-sun	radius	lat-geo	lat-geodetic
Jupiter	I	2043-09-24T01:15:59.466	23.21	-58.32	71486.1	68.90	71.23
Jupiter	E	2043-09-24T02:06:48.050	12.07	-65.07	71485.9	71.49	73.56

```

target                : Jupiter
target radius (km)   : 71492.00
C/A epoch            : 2043-09-24T01:39:44.110
Event type           : Pgt
: Jupiter occs: geocentric, topocentric
: Not a ringed target
Observer code        : ESO
Location             : European Southern Obs. (3.6m)
Latitude (deg)       : -29.26097
E. Longitude (deg)   : 289.26831
Altitude (km)        : 2.400
Gaia source ID       : 4116714475273089664
2Mass ID (if available) : 17375220-2313494
ICRS Star Coord at Epoch: 17h 37m 52.19897s -23:13:49.58026s
RUWE (>1.4 is poor) : 0.88
K magnitude          : 8.760
G magnitude          : 14.600
RP magnitude         : 13.234
BP magnitude         : 16.786
DUPflag             : 0
Distance (au)        : 5.231
f0 (km)              : 0.00
g0 (km)              : 0.00
skyplane vel. (km/s) : 15.88
Sun-Target sep (deg) : 84.61
Sun-Moon sep (deg)   : 162.74
B (ring opening deg) : -2.23
PA of pole (deg)     : 1.55
Pole direction: RA (deg): 268.05674
Dec (deg): 64.49731
C/A sky separation ("): 17.817
C/A sky separation (km): 67597.3
NAIF SPICE kernels   : RAJobs_U111+rgf15.spk
URKALLv1.spk
naif0012.tls
nep097.bsp
nep101.bsp
sat4401.bsp
de440.bsp
earth_720101_070426.bpc
jup365.bsp
urall6.bsp
IAU_SATURN_for_RINGFIT.tpc
pck00010.tpc
earth_200101_990628_predict.bpc
uranus_ringframes_rfrench20220627_v1.tf
neptune_ringframes_rfrench20220702a_v1.tf
earth_flat_IAU.spk
    
```



Jupiter 2043-09-24T01:34:32 K8.76 G14.60



x: target alt < 5.0 deg or sun > -5.0 deg

Target	I/E	UTC	alt	alt-sun	radius	lat-geo	lat-geodetic
Jupiter	I	2043-09-24T01:14:51.776	48.86	-33.92	71486.1	69.40	71.68
Jupiter	E	2043-09-24T02:04:32.179	38.04	-43.54	71485.9	72.34	74.33