

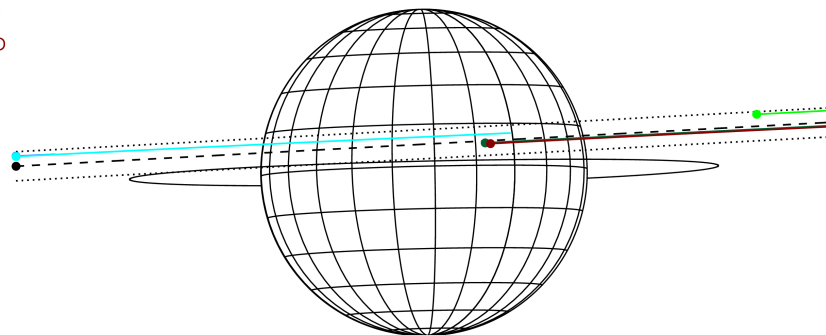
target : Jupiter  
 target radius (km) : 71492.00  
 C/A epoch : 2043-09-28T07:55:32.570  
 Event type : Pgt  
 : Jupiter occs: geocentric, topocentric  
 : Not a ringed target  
 Gaia source ID : 4116517147351634176  
 2Mass ID (if available) : 17394994-2315363

Jupiter 2043-09-28T07:55:32 K9.11 G14.43 Pgt

ICRS Star Coord at Epoch: 17h 39m 49.92810s -23:15:36.78891s  
 RUWE (>1.4 is poor) : 0.91  
 K magnitude : 9.114  
 G magnitude : 14.432  
 RP magnitude : 13.063  
 BP magnitude : 16.762  
 DUPflag : 0  
 Distance (au) : 5.296  
 f0 (km) : 0.00  
 g0 (km) : 0.00  
 skyplane vel. (km/s) : 17.81  
 Sun-Target sep (deg) : 80.88  
 Sun-Moon sep (deg) : 138.05  
 B (ring opening deg) : -2.21  
 PA of pole (deg) : 1.33  
 Pole direction: RA (deg): 268.05674  
 Dec (deg): 64.49731  
 C/A sky separation (") : 3.221  
 C/A sky separation (km) : 12370.6  
 NAIF SPICE kernels : RAJobs\_U111+rgf15.spk



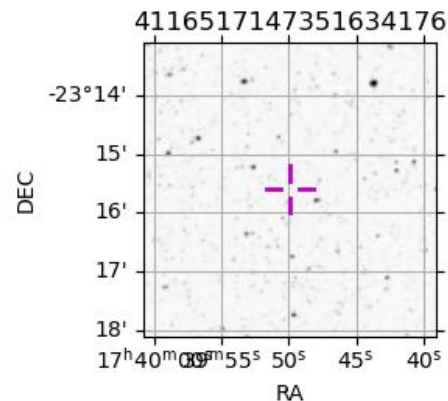
Earth  
 PAL  
 PMO  
 IRTF  
 AAT  
 MSO



2043-09-28T07:55:32.5700 cc: 17 39 49.9281 s: -23 15 36.7889 C/A 3.212" PA 183.09 deg v\_sky +17.81 km/s D 05.30 AU  
 Credit: Styled after SORA/Lucky Star

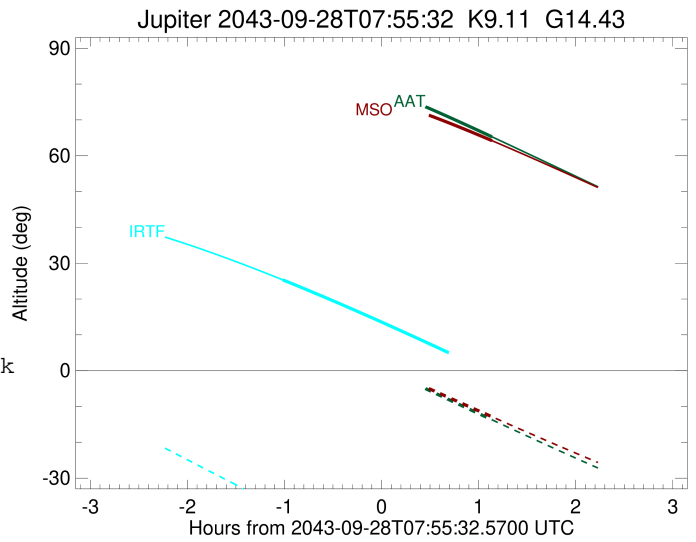
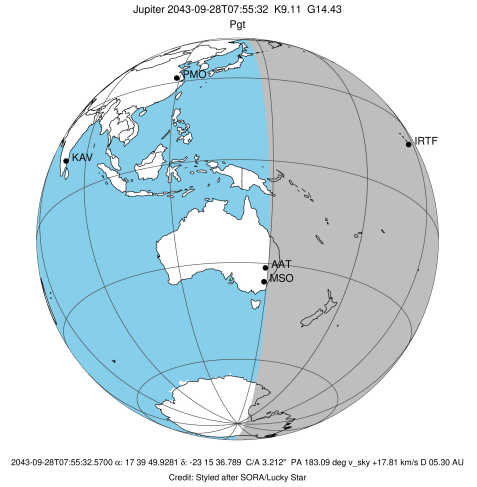
Observable events with sun below -5 deg and altitude above 5 deg

Obs	Location	lat	Elon	Target	Observed Events Interval	OEcode
PIC	Pic du Midi	42.9	0.1			Pnn
PAL	Palomar Mt (200")	33.4	243.1			Pnn
PMO	Purple Mtn Obs. Nanking	32.1	118.8			Pnn
KPNO	Kitt Peak Natl Obs	32.0	248.4			Pnn
MCD	McDonald Obs. 2.7m	30.7	256.0			Pnn
TEN	Teide Obs./Tenerife	28.3	343.5			Pnn
IRTF	Mauna Kea/IRTF	19.8	204.5	+	SEP 28 06:54 - SEP 28 06:54	Pin
KAV	Kavalur Observatory	12.6	78.8			Pnn
RIO	Rio de Janeiro	-22.9	316.8			Pnn
ESO	European Southern Obs. (3.6m)	-29.3	289.3			Pnn
AAT	Siding Spring (AAT)	-31.3	149.1	+	SEP 28 09:03 - SEP 28 09:03	Pne
SAAO	So. Afr. Astro. Obs. (Sutherland)	-32.4	20.8			Pnn
MSO	Mt. Stromlo Observatory	-35.3	149.0	+	SEP 28 09:03 - SEP 28 09:03	Pne



```

target                : Jupiter
target radius (km)   : 71492.00
C/A epoch            : 2043-09-28T08:00:39.690
Event type           : Pgt
: Jupiter occs: geocentric, topocentric
: Not a ringed target
Observer code        : IRTF
Location             : Mauna Kea/IRTF
Latitude (deg)       : 19.82622
E. Longitude (deg)   : 204.52800
Altitude (km)        : 4.168
Gaia source ID       : 4116517147351634176
2Mass ID (if available) : 17394994-2315363
ICRS Star Coord at Epoch: 17h 39m 49.92810s -23:15:36.78891s
RUWE (>1.4 is poor) : 0.91
K magnitude          : 9.114
G magnitude           : 14.432
RP magnitude         : 13.063
BP magnitude         : 16.762
DUPflag             : 0
Distance (au)        : 5.296
f0 (km)              : 0.00
g0 (km)              : 0.00
skyplane vel. (km/s) : 17.81
Sun-Target sep (deg) : 80.88
Sun-Moon sep (deg)   : 137.64
B (ring opening deg) : -2.21
PA of pole (deg)     : 1.33
Pole direction: RA (deg): 268.05674
Dec (deg): 64.49731
C/A sky separation ("): 4.055
C/A sky separation (km): 15576.3
NAIF SPICE kernels   : RAJobs_U111+rgf15.spk
URKALLv1.spk
naif0012.tls
nep097.bsp
nep101.bsp
sat4401.bsp
de440.bsp
earth_720101_070426.bpc
jup365.bsp
urall6.bsp
IAU_SATURN_for_RINGFIT.tpc
pck00010.tpc
earth_200101_990628_predict.bpc
uranus_ringframes_rfrench20220627_v1.tf
neptune_ringframes_rfrench20220702a_v1.tf
earth_flat_IAU.spk
    
```

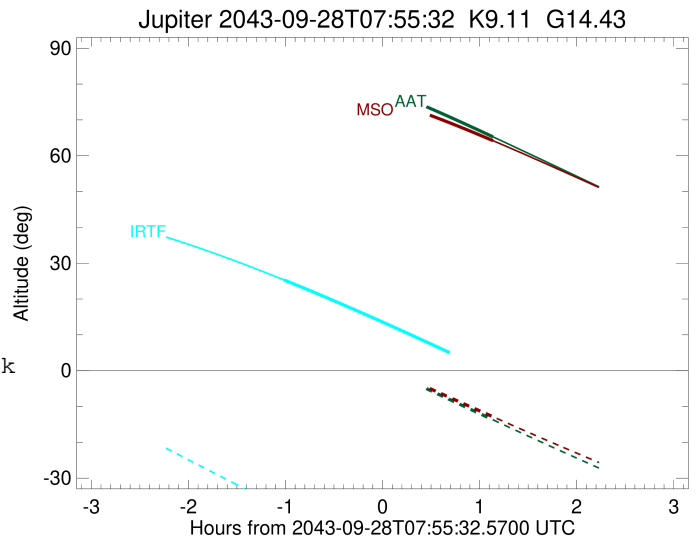
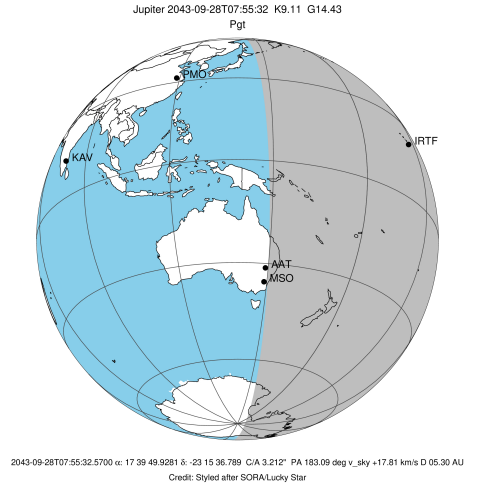


x: target alt < 5.0 deg or sun > -5.0 deg

Target	I/E	UTC	alt	alt-sun	radius	lat-geo	lat-geodetic
Jupiter	I	2043-09-28T06:54:26.630	25.36	-38.50	71491.7	11.26	12.82
Jupiter	E	2043-09-28T09:06:21.859	-1.22x	-66.06	71491.6	13.81	15.69

```

target                : Jupiter
target radius (km)   : 71492.00
C/A epoch            : 2043-09-28T07:56:26.170
Event type           : Pgt
: Jupiter occs: geocentric, topocentric
: Not a ringed target
Observer code        : AAT
Location             : Siding Spring (AAT)
Latitude (deg)       : -31.27703
E. Longitude (deg)   : 149.06608
Altitude (km)        : 1.164
Gaia source ID       : 4116517147351634176
2Mass ID (if available) : 17394994-2315363
ICRS Star Coord at Epoch: 17h 39m 49.92810s -23:15:36.78891s
RUWE (>1.4 is poor) : 0.91
K magnitude           : 9.114
G magnitude           : 14.432
RP magnitude         : 13.063
BP magnitude         : 16.762
DUPflag              : 0
Distance (au)        : 5.296
f0 (km)              : 0.00
g0 (km)              : 0.00
skyplane vel. (km/s) : 17.81
Sun-Target sep (deg) : 80.88
Sun-Moon sep (deg)   : 138.56
B (ring opening deg) : -2.21
PA of pole (deg)     : 1.33
Pole direction: RA (deg): 268.05674
Dec (deg): 64.49731
C/A sky separation (") : 2.999
C/A sky separation (km) : 11518.8
NAIF SPICE kernels   : RAJobs_U111+rgf15.spk
URKALLv1.spk
naif0012.tls
nep097.bsp
nep101.bsp
sat4401.bsp
de440.bsp
earth_720101_070426.bpc
jup365.bsp
urall6.bsp
IAU_SATURN_for_RINGFIT.tpc
pck00010.tpc
earth_200101_990628_predict.bpc
uranus_ringframes_rfrench20220627_v1.tf
neptune_ringframes_rfrench20220702a_v1.tf
earth_flat_IAU.spk
    
```

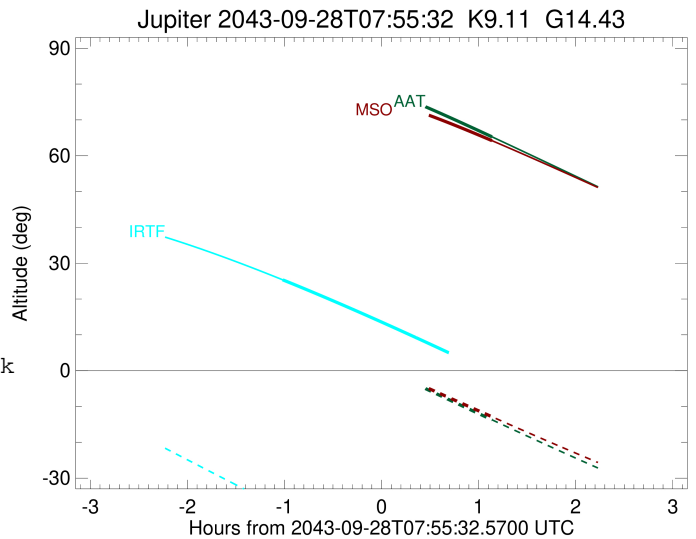
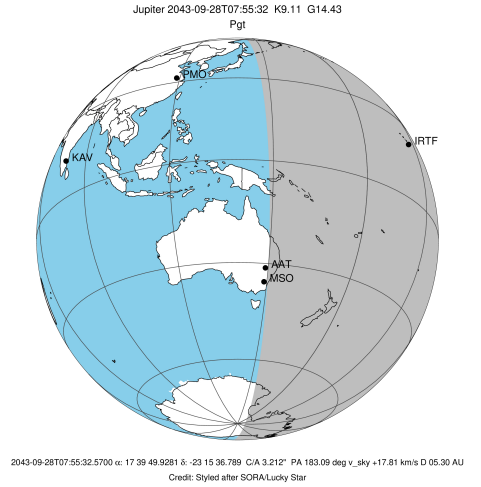


x: target alt < 5.0 deg or sun > -5.0 deg

Target	I/E	UTC	alt	alt-sun	radius	lat-geo	lat-geodetic
Jupiter	I	2043-09-28T06:48:51.716	79.80	15.04x	71491.9	7.45	8.51
Jupiter	E	2043-09-28T09:03:51.193	65.27	-13.71	71491.8	10.92	12.44

```

target                : Jupiter
target radius (km)   : 71492.00
C/A epoch             : 2043-09-28T07:56:24.740
Event type            : Pgt
: Jupiter occs: geocentric, topocentric
: Not a ringed target
Observer code         : MSO
Location              : Mt. Stromlo Observatory
Latitude (deg)        : -35.32000
E. Longitude (deg)    : 149.00833
Altitude (km)         : 0.770
Gaia source ID        : 4116517147351634176
2Mass ID (if available) : 17394994-2315363
ICRS Star Coord at Epoch: 17h 39m 49.92810s -23:15:36.78891s
RUWE (>1.4 is poor)  : 0.91
K magnitude           : 9.114
G magnitude           : 14.432
RP magnitude          : 13.063
BP magnitude          : 16.762
DUPflag              : 0
Distance (au)         : 5.296
f0 (km)               : 0.00
g0 (km)               : 0.00
skyplane vel. (km/s) : 17.81
Sun-Target sep (deg)  : 80.88
Sun-Moon sep (deg)    : 138.55
B (ring opening deg)  : -2.21
PA of pole (deg)      : 1.33
Pole direction: RA (deg): 268.05674
Dec (deg): 64.49731
C/A sky separation (") : 2.884
C/A sky separation (km) : 11077.3
NAIF SPICE kernels    : RAJobs_U111+rgf15.spk
URKALLv1.spk
naif0012.tls
nep097.bsp
nep101.bsp
sat4401.bsp
de440.bsp
earth_720101_070426.bpc
jup365.bsp
urall6.bsp
IAU_SATURN_for_RINGFIT.tpc
pck00010.tpc
earth_200101_990628_predict.bpc
uranus_ringframes_rfrench20220627_v1.tf
neptune_ringframes_rfrench20220702a_v1.tf
earth_flat_IAU.spk
    
```



x: target alt < 5.0 deg or sun > -5.0 deg

Target	I/E	UTC	alt	alt-sun	radius	lat-geo	lat-geodetic
Jupiter	I	2043-09-28T06:48:50.467	76.50	14.57x	71491.9	7.10	8.10
Jupiter	E	2043-09-28T09:03:49.805	64.20	-12.86	71491.8	10.57	12.04