

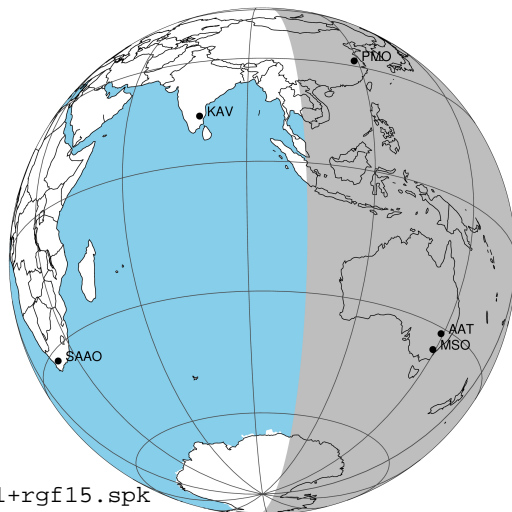
target : Jupiter
 target radius (km) : 71492.00
 C/A epoch : 2043-09-29T10:56:08.320
 Event type : Pt
 : Jupiter occs: topocentric, not geocentric
 : Not a ringed target
 Gaia source ID : 4116536590547468160
 2Mass ID (if available) : 17402307-2315454

Jupiter 2043-09-29T10:56:08 K8.36 G13.99 Pt

ICRS Star Coord at Epoch: 17h 40m 23.07544s -23:15:45.55359s

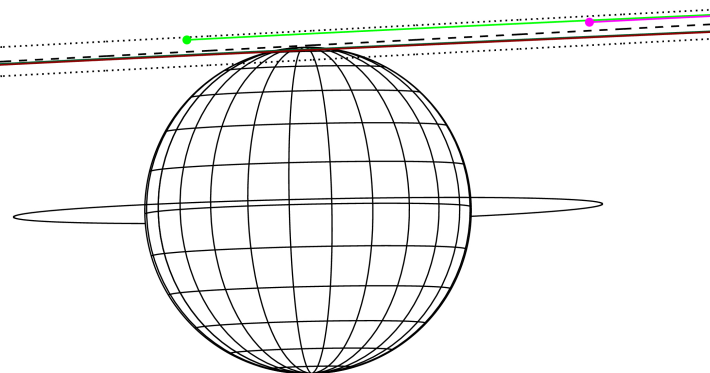
RUWE (>1.4 is poor) : 0.90
 K magnitude : 8.356
 G magnitude : 13.987
 RP magnitude : 12.557
 BP magnitude : 16.566
 DUPflag : 0
 Distance (au) : 5.313
 f0 (km) : 0.00
 g0 (km) : 0.00
 skyplane vel. (km/s) : 18.32
 Sun-Target sep (deg) : 79.90
 Sun-Moon sep (deg) : 123.28
 B (ring opening deg) : -2.21
 PA of pole (deg) : 1.28
 Pole direction: RA (deg): 268.05674
 Dec (deg): 64.49731
 C/A sky separation (") : 18.734
 C/A sky separation (km) : 72186.0
 NAIF SPICE kernels : RAJobs_U111+rgf15.spk

Jupiter 2043-09-29T10:56:08 K8.36 G13.99 Pt



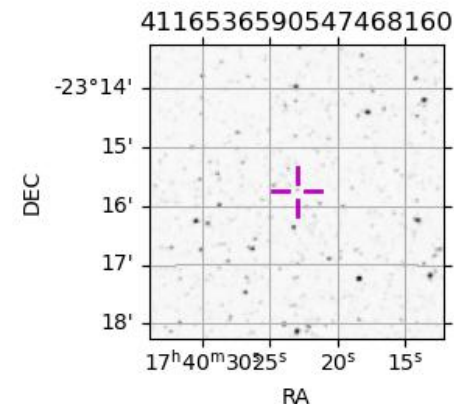
2043-09-29T10:56:08.3200 a: 17 40 23.0754 s: -23 15 45.554 C/A ***** PA 183.01 deg v_sky +18.32 km/s D 05.31 AU
 Credit: Styled after SORA/Lucky Star

Earth
 PMO
 IRTF
 KAV
 AAT
 MSO



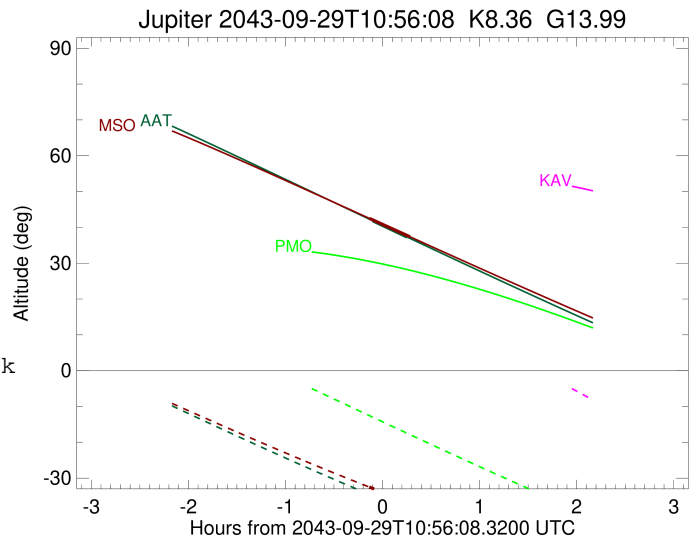
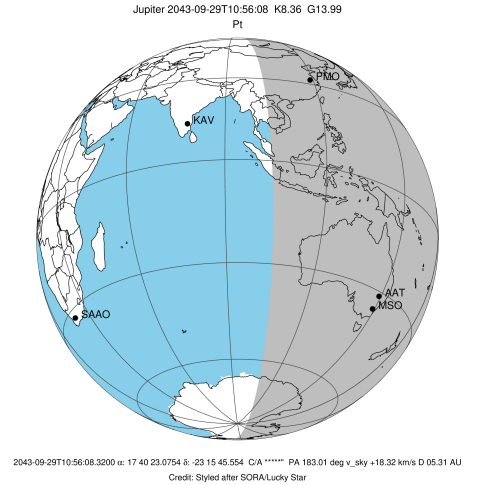
Observable events with sun below -5 deg and altitude above 5 deg

Obs	Location	lat	Elon	Target	Observed Events	Interval	OEcode
PIC	Pic du Midi	42.9	0.1				Pnn
PAL	Palomar Mt (200")	33.4	243.1				Pnn
PMO	Purple Mtn Obs. Nanking	32.1	118.8				Pnn
KPNO	Kitt Peak Natl Obs	32.0	248.4				Pnn
MCD	McDonald Obs. 2.7m	30.7	256.0				Pnn
TEN	Teide Obs./Tenerife	28.3	343.5				Pnn
IRTF	Mauna Kea/IRTF	19.8	204.5				Pnn
KAV	Kavalur Observatory	12.6	78.8				Pnn
RIO	Rio de Janeiro	-22.9	316.8				Pnn
ESO	European Southern Obs. (3.6m)	-29.3	289.3				Pnn
AAT	Siding Spring (AAT)	-31.3	149.1	+ +	SEP 29 10:50	- SEP 29 11:11	Pie
SAAO	So. Afr. Astro. Obs. (Sutherland)	-32.4	20.8				Pnn
MSO	Mt. Stromlo Observatory	-35.3	149.0	+ +	SEP 29 10:47	- SEP 29 11:13	Pie



```

target                : Jupiter
target radius (km)   : 71492.00
C/A epoch             : 2043-09-29T11:00:47.340
Event type            : Pt
: Jupiter occs: topocentric, not geocentric
: Not a ringed target
Observer code         : AAT
Location              : Siding Spring (AAT)
Latitude (deg)       : -31.27703
E. Longitude (deg)   : 149.06608
Altitude (km)        : 1.164
Gaia source ID       : 4116536590547468160
2Mass ID (if available) : 17402307-2315454
ICRS Star Coord at Epoch: 17h 40m 23.07544s -23:15:45.55359s
RUWE (>1.4 is poor) : 0.90
K magnitude           : 8.356
G magnitude           : 13.987
RP magnitude          : 12.557
BP magnitude          : 16.566
DUPflag              : 0
Distance (au)        : 5.313
f0 (km)              : 0.00
g0 (km)              : 0.00
skyplane vel. (km/s) : 18.32
Sun-Target sep (deg) : 79.90
Sun-Moon sep (deg)   : 123.41
B (ring opening deg) : -2.21
PA of pole (deg)     : 1.28
Pole direction: RA (deg): 268.05674
Dec (deg): 64.49731
C/A sky separation ("): 18.314
C/A sky separation (km): 70569.8
NAIF SPICE kernels   : RAJobs_U111+rgf15.spk
URKALLv1.spk
naif0012.tls
nep097.bsp
nep101.bsp
sat4401.bsp
de440.bsp
earth_720101_070426.bpc
jup365.bsp
urall6.bsp
IAU_SATURN_for_RINGFIT.tpc
pck00010.tpc
earth_200101_990628_predict.bpc
uranus_ringframes_rfrench20220627_v1.tf
neptune_ringframes_rfrench20220702a_v1.tf
earth_flat_IAU.spk
    
```

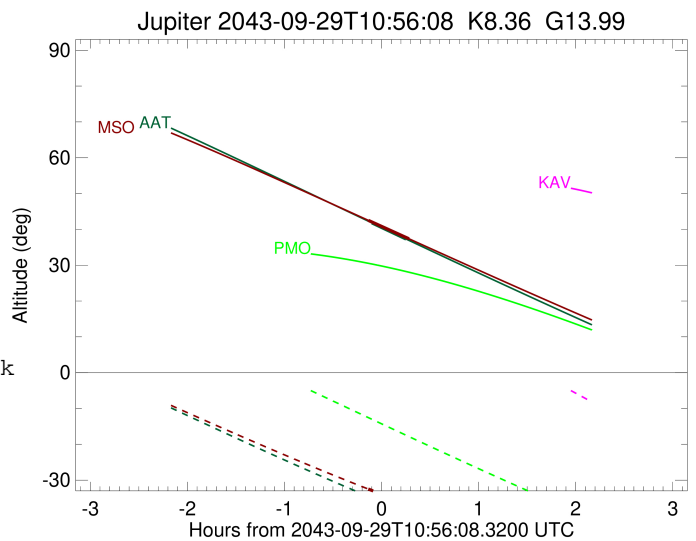
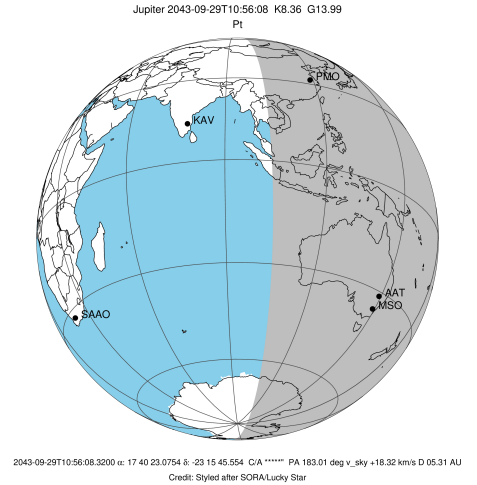


x: target alt < 5.0 deg or sun > -5.0 deg

Target	I/E	UTC	alt	alt-sun	radius	lat-geo	lat-geodetic
Jupiter	I	2043-09-29T10:50:16.180	41.80	-34.94	71485.6	79.23	80.49
Jupiter	E	2043-09-29T11:11:17.785	37.31	-38.79	71485.5	81.86	82.81

```

target                : Jupiter
target radius (km)   : 71492.00
C/A epoch             : 2043-09-29T11:00:35.500
Event type            : Pt
: Jupiter occs: topocentric, not geocentric
: Not a ringed target
Observer code         : MSO
Location              : Mt. Stromlo Observatory
Latitude (deg)       : -35.32000
E. Longitude (deg)   : 149.00833
Altitude (km)        : 0.770
Gaia source ID       : 4116536590547468160
2Mass ID (if available) : 17402307-2315454
ICRS Star Coord at Epoch: 17h 40m 23.07544s -23:15:45.55359s
RUWE (>1.4 is poor) : 0.90
K magnitude           : 8.356
G magnitude           : 13.987
RP magnitude          : 12.557
BP magnitude          : 16.566
DUPflag              : 0
Distance (au)        : 5.313
f0 (km)              : 0.00
g0 (km)              : 0.00
skyplane vel. (km/s) : 18.32
Sun-Target sep (deg) : 79.90
Sun-Moon sep (deg)   : 123.43
B (ring opening deg) : -2.21
PA of pole (deg)     : 1.28
Pole direction: RA (deg): 268.05674
Dec (deg): 64.49731
C/A sky separation ("): 18.210
C/A sky separation (km): 70165.6
NAIF SPICE kernels   : RAJobs_U111+rgf15.spk
URKALLv1.spk
naif0012.tls
nep097.bsp
nep101.bsp
sat4401.bsp
de440.bsp
earth_720101_070426.bpc
jup365.bsp
urall6.bsp
IAU_SATURN_for_RINGFIT.tpc
pck00010.tpc
earth_200101_990628_predict.bpc
uranus_ringframes_rfrench20220627_v1.tf
neptune_ringframes_rfrench20220702a_v1.tf
earth_flat_IAU.spk
    
```



x: target alt < 5.0 deg or sun > -5.0 deg

Target	I/E	UTC	alt	alt-sun	radius	lat-geo	lat-geodetic
Jupiter	I	2043-09-29T10:47:59.161	42.51	-32.48	71485.7	77.40	78.86
Jupiter	E	2043-09-29T11:13:10.869	37.35	-36.78	71485.5	80.09	81.24