

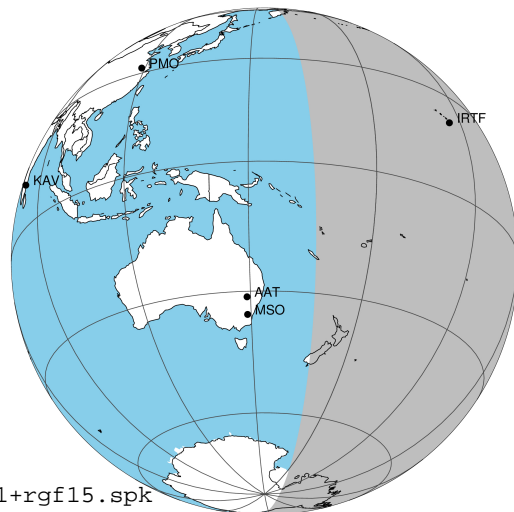
target : Jupiter
 target radius (km) : 71492.00
 C/A epoch : 2043-10-01T06:49:21.690
 Event type : Pgt
 : Jupiter occs: geocentric, topocentric
 : Not a ringed target
 Gaia source ID : 4116487730995856384
 2Mass ID (if available) : 17411856-2316296

Jupiter 2043-10-01T06:49:21 K9.62 G14.21 Pgt

ICRS Star Coord at Epoch: 17h 41m 18.56629s -23:16:29.73559s

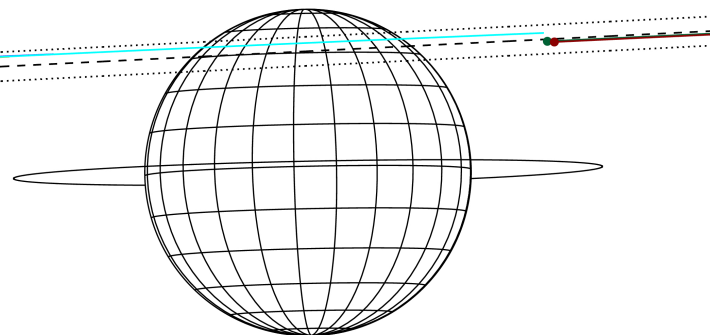
RUWE (>1.4 is poor) : 0.90
 K magnitude : 9.621
 G magnitude : 14.214
 RP magnitude : 13.030
 BP magnitude : 15.753
 DUPflag : 0
 Distance (au) : 5.340
 f0 (km) : 0.00
 g0 (km) : 0.00
 skyplane vel. (km/s) : 19.14
 Sun-Target sep (deg) : 78.32
 Sun-Moon sep (deg) : 99.79
 B (ring opening deg) : -2.20
 PA of pole (deg) : 1.18
 Pole direction: RA (deg): 268.05674
 Dec (deg): 64.49731
 C/A sky separation (") : 13.699
 C/A sky separation (km) : 53059.1
 NAIF SPICE kernels : RAJobs_U111+rgf15.spk

Jupiter 2043-10-01T06:49:21 K9.62 G14.21
 Pgt



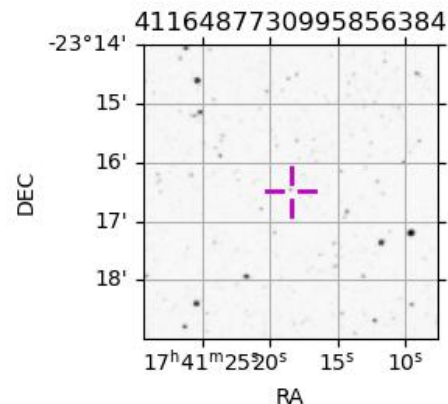
2043-10-01T06:49:21.6900 a: 17 41 18.5663 s: -23 16 29.736 C/A ***** PA 182.86 deg v_sky +19.14 km/s D 05.34 AU
 Credit: Styled after SORA/Lucky Star

Earth
 PAL
 KPNO
 MCD
 IRTF
 AAT
 MSO



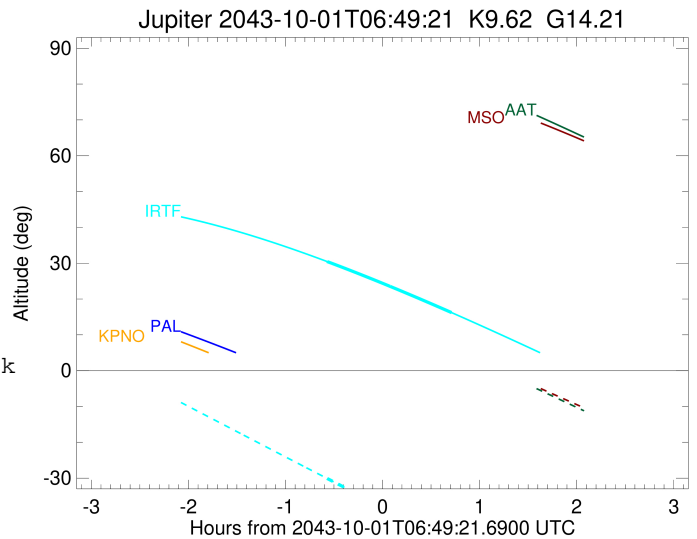
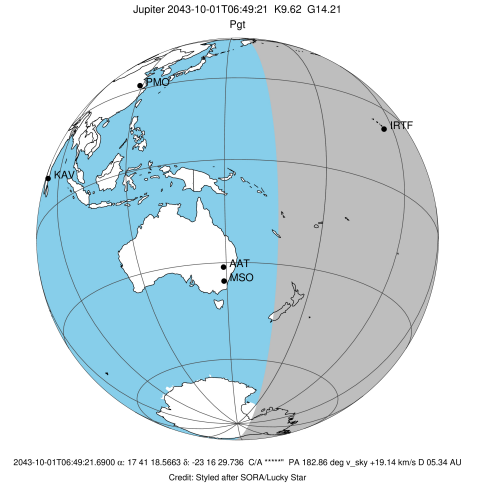
Observable events with sun below -5 deg and altitude above 5 deg

Obs	Location	lat	Elon	Target	Observed Events Interval	OCode
PIC	Pic du Midi	42.9	0.1			Pnn
PAL	Palomar Mt (200")	33.4	243.1			Pnn
PMO	Purple Mtn Obs. Nanking	32.1	118.8			Pnn
KPNO	Kitt Peak Natl Obs	32.0	248.4			Pnn
MCD	McDonald Obs. 2.7m	30.7	256.0			Pnn
TEN	Teide Obs./Tenerife	28.3	343.5			Pnn
IRTF	Mauna Kea/IRTF	19.8	204.5	+ +	OCT 01 06:15 - OCT 01 07:32	Pie
KAV	Kavalur Observatory	12.6	78.8			Pnn
RIO	Rio de Janeiro	-22.9	316.8			Pnn
ESO	European Southern Obs. (3.6m)	-29.3	289.3			Pnn
AAT	Siding Spring (AAT)	-31.3	149.1			Pnn
SAAO	So. Afr. Astro. Obs. (Sutherland)	-32.4	20.8			Pnn
MSO	Mt. Stromlo Observatory	-35.3	149.0			Pnn



```

target                : Jupiter
target radius (km)   : 71492.00
C/A epoch             : 2043-10-01T06:53:39.640
Event type            : Pgt
: Jupiter occs: geocentric, topocentric
: Not a ringed target
Observer code         : IRTF
Location              : Mauna Kea/IRTF
Latitude (deg)        : 19.82622
E. Longitude (deg)    : 204.52800
Altitude (km)         : 4.168
Gaia source ID        : 4116487730995856384
2Mass ID (if available) : 17411856-2316296
ICRS Star Coord at Epoch: 17h 41m 18.56629s -23:16:29.73559s
RUWE (>1.4 is poor) : 0.90
K magnitude           : 9.621
G magnitude           : 14.214
RP magnitude          : 13.030
BP magnitude          : 15.753
DUPflag              : 0
Distance (au)         : 5.340
f0 (km)               : 0.00
g0 (km)               : 0.00
skyplane vel. (km/s) : 19.14
Sun-Target sep (deg)  : 78.32
Sun-Moon sep (deg)    : 100.05
B (ring opening deg) : -2.20
PA of pole (deg)      : 1.18
Pole direction: RA (deg): 268.05674
Dec (deg): 64.49731
C/A sky separation (") : 14.642
C/A sky separation (km) : 56713.0
NAIF SPICE kernels    : RAJobs_U111+rgf15.spk
URKALLv1.spk
naif0012.tls
nep097.bsp
nep101.bsp
sat4401.bsp
de440.bsp
earth_720101_070426.bpc
jup365.bsp
urall6.bsp
IAU_SATURN_for_RINGFIT.tpc
pck00010.tpc
earth_200101_990628_predict.bpc
uranus_ringframes_rfrench20220627_v1.tf
neptune_ringframes_rfrench20220702a_v1.tf
earth_flat_IAU.spk
    
```



x: target alt < 5.0 deg or sun > -5.0 deg

Target	I/E	UTC	alt	alt-sun	radius	lat-geo	lat-geodetic
Jupiter	I	2043-10-01T06:15:06.536	30.46	-30.08	71488.0	51.10	54.65
Jupiter	E	2043-10-01T07:32:03.886	16.21	-47.75	71487.7	53.72	57.16