

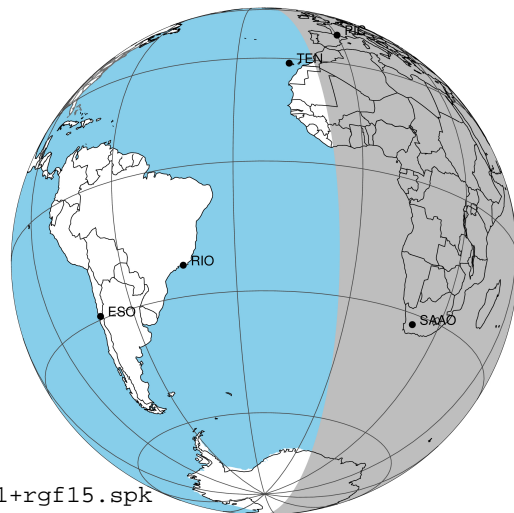
target : Jupiter
 target radius (km) : 71492.00
 C/A epoch : 2043-10-07T18:13:35.310
 Event type : Pgt
 : Jupiter occs: geocentric, topocentric
 : Not a ringed target
 Gaia source ID : 4068805626938737664
 2Mass ID (if available) : 17445188-2319135

Jupiter 2043-10-07T18:13:35 K9.23 G14.11 Pgt

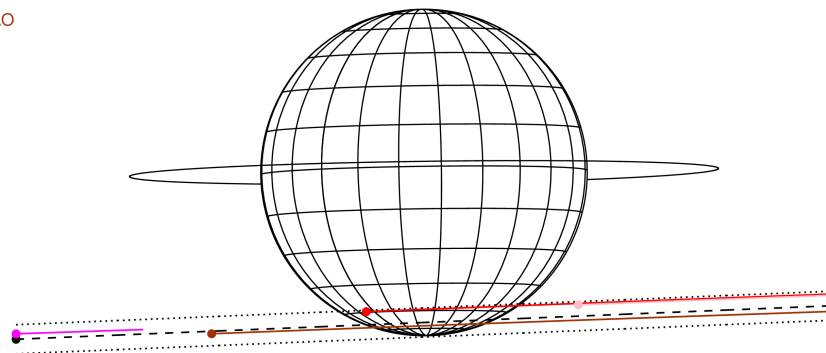
ICRS Star Coord at Epoch: 17h 44m 51.87851s -23:19:13.78988s

RUWE (>1.4 is poor) : 1.04
 K magnitude : 9.232
 G magnitude : 14.107
 RP magnitude : 12.864
 BP magnitude : 15.806
 DUPflag : 0
 Distance (au) : 5.436
 f0 (km) : 0.00
 g0 (km) : 0.00
 skyplane vel. (km/s) : 21.97
 Sun-Target sep (deg) : 72.76
 Sun-Moon sep (deg) : 22.03
 B (ring opening deg) : -2.17
 PA of pole (deg) : 0.79
 Pole direction: RA (deg): 268.05674
 Dec (deg): 64.49731
 C/A sky separation (") : 16.650
 C/A sky separation (km) : 65649.7
 NAIF SPICE kernels : RAJobs_U111+rgf15.spk

Jupiter 2043-10-07T18:13:35 K9.23 G14.11
 Pgt



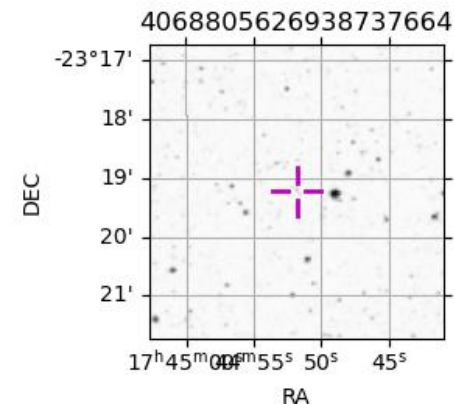
Earth
 PIC
 TEN
 KAV
 SAAO



2043-10-07T18:13:35.3100 α: 17 44 51.8785 δ: -23 19 13.790 C/A ***** PA 2.35 deg v_sky +21.97 km/s D 05.44 AU
 Credit: Styled after SORA/Lucky Star

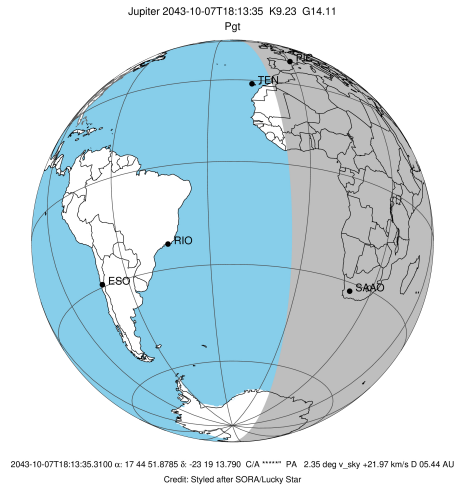
Observable events with sun below -5 deg and altitude above 5 deg

Obs	Location	lat	Elon	Target	Observed Events Interval	OEcode
PIC	Pic du Midi	42.9	0.1	+	OCT 07 18:44 - OCT 07 18:44	Pne
PAL	Palomar Mt (200")	33.4	243.1			Pnn
PMO	Purple Mtn Obs. Nanking	32.1	118.8			Pnn
KPNO	Kitt Peak Natl Obs	32.0	248.4			Pnn
MCD	McDonald Obs. 2.7m	30.7	256.0			Pnn
TEN	Teide Obs./Tenerife	28.3	343.5			Pnn
IRTF	Mauna Kea/IRTF	19.8	204.5			Pnn
KAV	Kavalur Observatory	12.6	78.8			Pnn
RIO	Rio de Janeiro	-22.9	316.8			Pnn
ESO	European Southern Obs. (3.6m)	-29.3	289.3			Pnn
AAT	Siding Spring (AAT)	-31.3	149.1			Pnn
SAAO	So. Afr. Astro. Obs. (Sutherland)	-32.4	20.8	+ +	OCT 07 17:57 - OCT 07 18:35	Pie
MSO	Mt. Stromlo Observatory	-35.3	149.0			Pnn

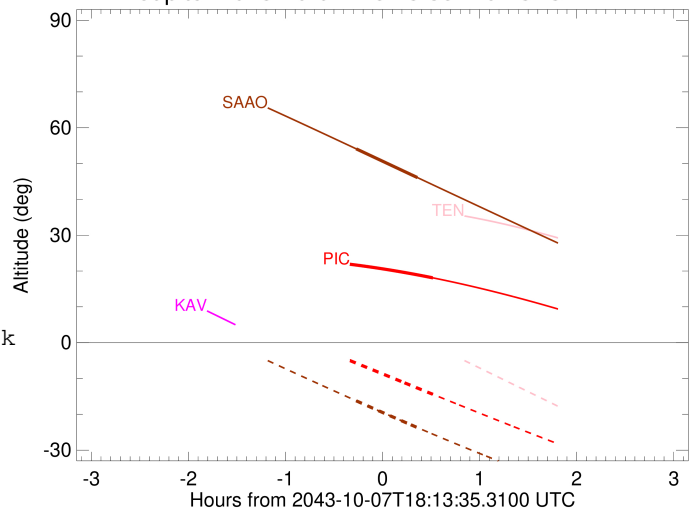


```

target                : Jupiter
target radius (km)   : 71492.00
C/A epoch             : 2043-10-07T18:14:44.660
Event type            : Pgt
: Jupiter occs: geocentric, topocentric
: Not a ringed target
Observer code         : PIC
Location              : Pic du Midi
Latitude (deg)        : 42.93656
E. Longitude (deg)    : 0.14231
Altitude (km)         : 2.890
Gaia source ID        : 4068805626938737664
2Mass ID (if available) : 17445188-2319135
ICRS Star Coord at Epoch: 17h 44m 51.87851s -23:19:13.78988s
RUWE (>1.4 is poor) : 1.04
K magnitude           : 9.232
G magnitude           : 14.107
RP magnitude          : 12.864
BP magnitude          : 15.806
DUPflag              : 0
Distance (au)         : 5.436
f0 (km)               : 0.00
g0 (km)               : 0.00
skyplane vel. (km/s) : 21.97
Sun-Target sep (deg) : 72.76
Sun-Moon sep (deg)   : 22.55
B (ring opening deg) : -2.17
PA of pole (deg)     : 0.79
Pole direction: RA (deg): 268.05674
Dec (deg): 64.49731
C/A sky separation (") : 15.195
C/A sky separation (km) : 59912.8
NAIF SPICE kernels   : RAJobs_U111+rgf15.spk
URKALLv1.spk
naif0012.tls
nep097.bsp
nep101.bsp
sat4401.bsp
de440.bsp
earth_720101_070426.bpc
jup365.bsp
urall6.bsp
IAU_SATURN_for_RINGFIT.tpc
pck00010.tpc
earth_200101_990628_predict.bpc
uranus_ringframes_rfrench20220627_v1.tf
neptune_ringframes_rfrench20220702a_v1.tf
earth_flat_IAU.spk
    
```



Jupiter 2043-10-07T18:13:35 K9.23 G14.11

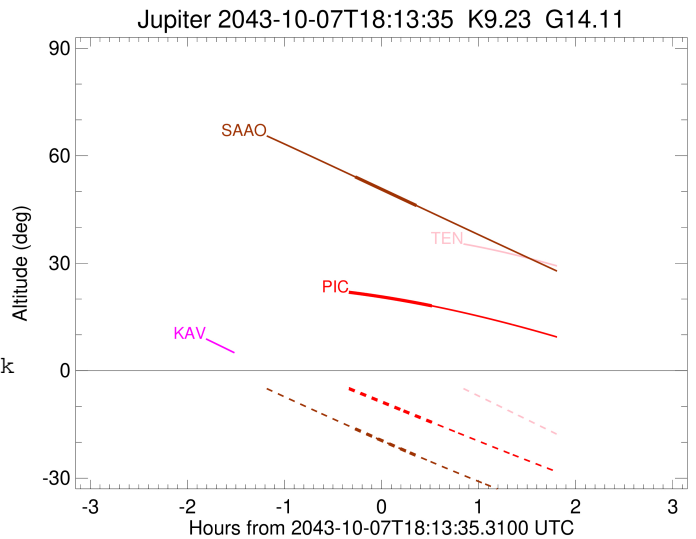
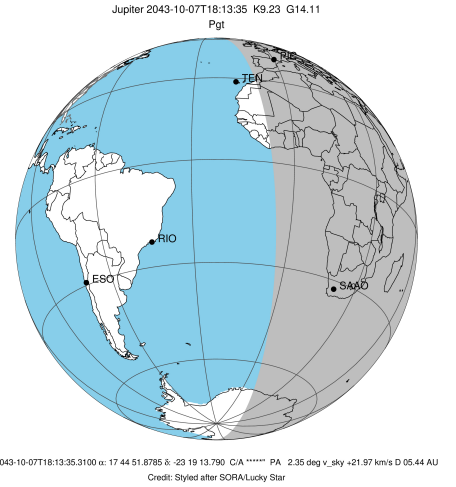


x: target alt < 5.0 deg or sun > -5.0 deg

Target	I/E	UTC	alt	alt-sun	radius	lat-geo	lat-geodetic
Jupiter	I	2043-10-07T17:44:43.827	22.35	-3.40x	71487.3	-58.35	-61.52
Jupiter	E	2043-10-07T18:44:43.295	18.09	-14.41	71487.6	-55.45	-58.80

```

target                : Jupiter
target radius (km)    : 71492.00
C/A epoch              : 2043-10-07T18:16:15.420
Event type             : Pgt
: Jupiter occs: geocentric, topocentric
: Not a ringed target
Observer code          : SAAO
Location               : So. Afr. Astro. Obs. (Sutherland)
Latitude (deg)         : -32.37953
E. Longitude (deg)    : 20.81070
Altitude (km)         : 1.768
Gaia source ID        : 4068805626938737664
2Mass ID (if available) : 17445188-2319135
ICRS Star Coord at Epoch: 17h 44m 51.87851s -23:19:13.78988s
RUWE (>1.4 is poor)  : 1.04
K magnitude            : 9.232
G magnitude            : 14.107
RP magnitude           : 12.864
BP magnitude           : 15.806
DUPflag               : 0
Distance (au)         : 5.436
f0 (km)               : 0.00
g0 (km)               : 0.00
skyplane vel. (km/s)  : 21.97
Sun-Target sep (deg)  : 72.76
Sun-Moon sep (deg)    : 22.74
B (ring opening deg)  : -2.17
PA of pole (deg)      : 0.79
Pole direction: RA (deg): 268.05674
Dec (deg): 64.49731
C/A sky separation (") : 17.019
C/A sky separation (km) : 67102.3
NAIF SPICE kernels    : RAJobs_U111+rgf15.spk
URKALLv1.spk
naif0012.tls
nep097.bsp
nep101.bsp
sat4401.bsp
de440.bsp
earth_720101_070426.bpc
jup365.bsp
urall6.bsp
IAU_SATURN_for_RINGFIT.tpc
pck00010.tpc
earth_200101_990628_predict.bpc
uranus_ringframes_rfrench20220627_v1.tf
neptune_ringframes_rfrench20220702a_v1.tf
earth_flat_IAU.spk
    
```



x: target alt < 5.0 deg or sun > -5.0 deg

Target	I/E	UTC	alt	alt-sun	radius	lat-geo	lat-geodetic
Jupiter	I	2043-10-07T17:57:18.785	54.10	-16.22	71486.2	-71.02	-73.15
Jupiter	E	2043-10-07T18:35:10.603	46.08	-23.70	71486.4	-68.44	-70.81