

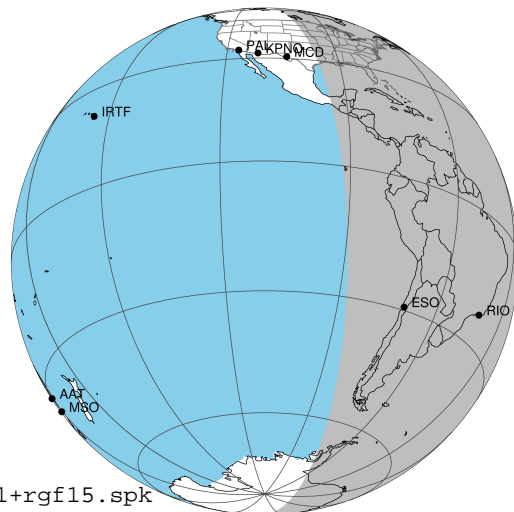
target : Jupiter
 target radius (km) : 71492.00
 C/A epoch : 2043-10-09T23:54:09.430
 Event type : Pt
 : Jupiter occs: topocentric, not geocentric
 : Not a ringed target
 Gaia source ID : 4068779199909425536
 2Mass ID (if available) : 17461155-2319222

Jupiter 2043-10-09T23:54:09 K9.81 G13.20 Pt

ICRS Star Coord at Epoch: 17h 46m 11.54251s -23:19:22.59798s

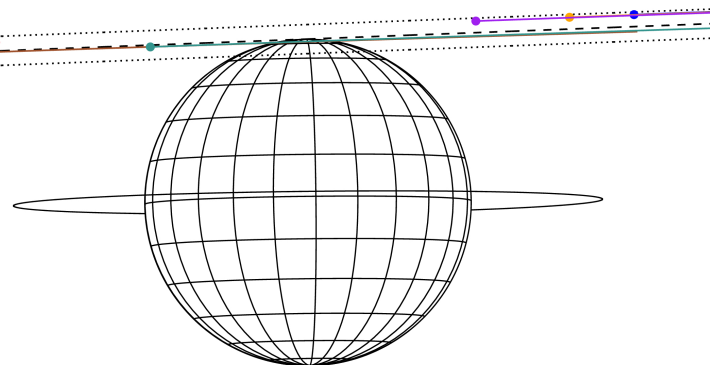
RUWE (>1.4 is poor) : 0.84
 K magnitude : 9.809
 G magnitude : 13.195
 RP magnitude : 12.224
 BP magnitude : 14.144
 DUPflag : 0
 Distance (au) : 5.469
 f0 (km) : 0.00
 g0 (km) : 0.00
 skyplane vel. (km/s) : 22.92
 Sun-Target sep (deg) : 70.85
 Sun-Moon sep (deg) : 7.12
 B (ring opening deg) : -2.17
 PA of pole (deg) : 0.65
 Pole direction: RA (deg): 268.05675
 Dec (deg): 64.49731
 C/A sky separation (") : 18.037
 C/A sky separation (km) : 71541.6
 NAIF SPICE kernels : RAJobs_U111+rgf15.spk

Jupiter 2043-10-09T23:54:09 K9.81 G13.20 Pt



Earth

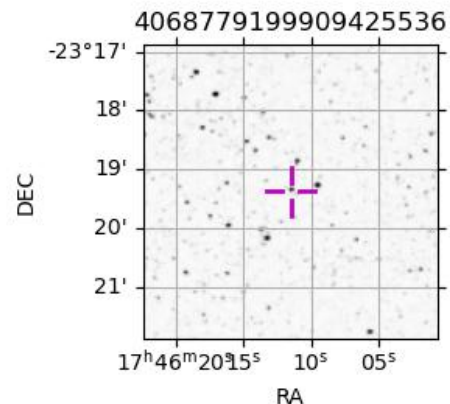
- PAL
- KPNO
- MCD
- TEN
- RIO
- ESO



2043-10-09T23:54:09.4300 a: 17 46 11.5425 s: -23 19 22.598 C/A ***** PA 182.19 deg v_sky +22.92 km/s D 05.47 AU
 Credit: Styled after SORA/Lucky Star

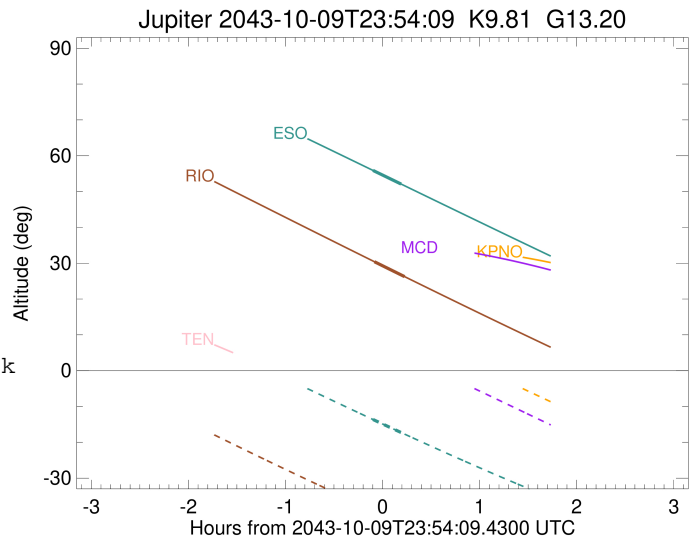
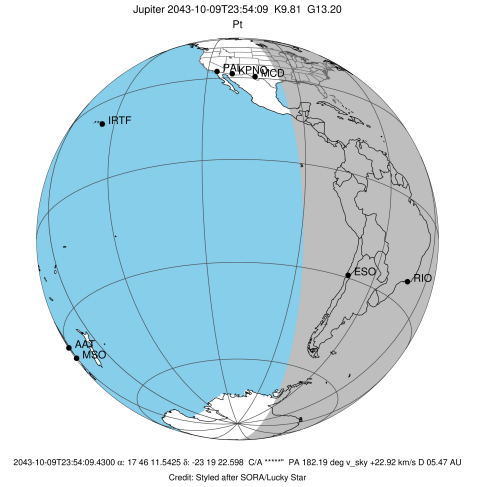
Observable events with sun below -5 deg and altitude above 5 deg

Obs	Location	lat	Elon	Target	Observed Events Interval	OCode
PIC	Pic du Midi	42.9	0.1			Pnn
PAL	Palomar Mt (200")	33.4	243.1			Pnn
PMO	Purple Mtn Obs. Nanking	32.1	118.8			Pnn
KPNO	Kitt Peak Natl Obs	32.0	248.4			Pnn
MCD	McDonald Obs. 2.7m	30.7	256.0			Pnn
TEN	Teide Obs./Tenerife	28.3	343.5			Pnn
IRTF	Mauna Kea/IRTF	19.8	204.5			Pnn
KAV	Kavalur Observatory	12.6	78.8			Pnn
RIO	Rio de Janeiro	-22.9	316.8	+ +	OCT 09 23:49 - OCT 10 00:07	Pie
ESO	European Southern Obs. (3.6m)	-29.3	289.3	+ +	OCT 09 23:48 - OCT 10 00:05	Pie
AAT	Siding Spring (AAT)	-31.3	149.1			Pnn
SAAO	So. Afr. Astro. Obs. (Sutherland)	-32.4	20.8			Pnn
MSO	Mt. Stromlo Observatory	-35.3	149.0			Pnn



```

target                : Jupiter
target radius (km)   : 71492.00
C/A epoch             : 2043-10-09T23:58:29.070
Event type           : Pt
: Jupiter occs: topocentric, not geocentric
: Not a ringed target
Observer code        : RIO
Location             : Rio de Janeiro
Latitude (deg)       : -22.89506
E. Longitude (deg)   : 316.77708
Altitude (km)        : 0.033
Gaia source ID       : 4068779199909425536
2Mass ID (if available) : 17461155-2319222
ICRS Star Coord at Epoch: 17h 46m 11.54251s -23:19:22.59798s
RUWE (>1.4 is poor) : 0.84
K magnitude           : 9.809
G magnitude           : 13.195
RP magnitude          : 12.224
BP magnitude          : 14.144
DUPflag              : 0
Distance (au)        : 5.469
f0 (km)              : 0.00
g0 (km)              : 0.00
skyplane vel. (km/s) : 22.92
Sun-Target sep (deg) : 70.85
Sun-Moon sep (deg)   : 6.55
B (ring opening deg) : -2.17
PA of pole (deg)     : 0.65
Pole direction: RA (deg): 268.05675
Dec (deg): 64.49731
C/A sky separation (") : 17.735
C/A sky separation (km) : 70346.0
NAIF SPICE kernels   : RAJobs_U111+rgf15.spk
URKALLv1.spk
naif0012.tls
nep097.bsp
nep101.bsp
sat4401.bsp
de440.bsp
earth_720101_070426.bpc
jup365.bsp
urall6.bsp
IAU_SATURN_for_RINGFIT.tpc
pck00010.tpc
earth_200101_990628_predict.bpc
uranus_ringframes_rfrench20220627_v1.tf
neptune_ringframes_rfrench20220702a_v1.tf
earth_flat_IAU.spk
    
```

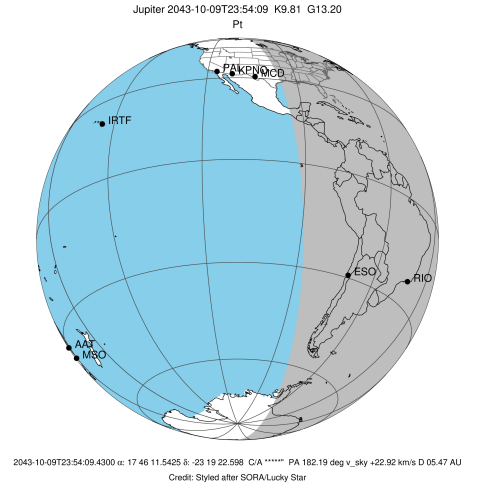


x: target alt < 5.0 deg or sun > -5.0 deg

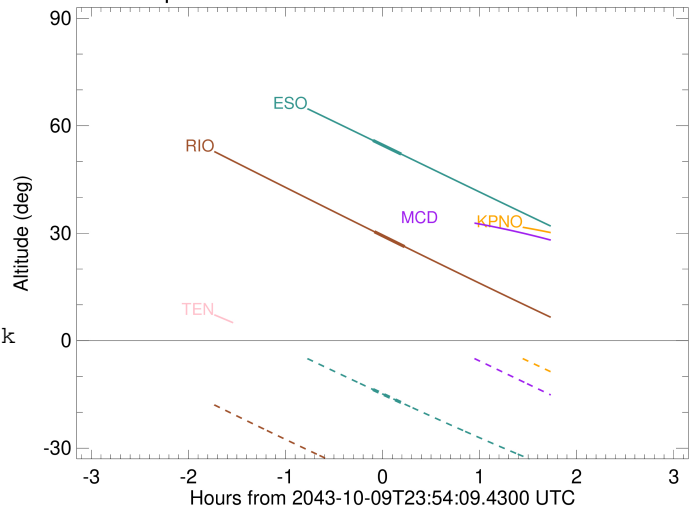
Target	I/E	UTC	alt	alt-sun	radius	lat-geo	lat-geodetic
Jupiter	I	2043-10-09T23:49:09.834	30.41	-39.01	71485.8	78.39	79.74
Jupiter	E	2043-10-10T00:07:47.791	26.25	-42.66	71485.7	80.66	81.75

```

target                : Jupiter
target radius (km)    : 71492.00
C/A epoch              : 2043-10-09T23:56:59.260
Event type             : Pt
: Jupiter occs: topocentric, not geocentric
: Not a ringed target
Observer code          : ESO
Location               : European Southern Obs. (3.6m)
Latitude (deg)         : -29.26097
E. Longitude (deg)    : 289.26831
Altitude (km)         : 2.400
Gaia source ID         : 4068779199909425536
2Mass ID (if available) : 17461155-2319222
ICRS Star Coord at Epoch: 17h 46m 11.54251s -23:19:22.59798s
RUWE (>1.4 is poor)  : 0.84
K magnitude            : 9.809
G magnitude            : 13.195
RP magnitude           : 12.224
BP magnitude           : 14.144
DUPflag                : 0
Distance (au)         : 5.469
f0 (km)                : 0.00
g0 (km)                : 0.00
skyplane vel. (km/s)  : 22.92
Sun-Target sep (deg)  : 70.85
Sun-Moon sep (deg)    : 6.77
B (ring opening deg)  : -2.17
PA of pole (deg)      : 0.65
Pole direction: RA (deg): 268.05675
Dec (deg): 64.49731
C/A sky separation (") : 17.777
C/A sky separation (km) : 70511.1
NAIF SPICE kernels    : RAJobs_U111+rgf15.spk
URKALLv1.spk
naif0012.tls
nep097.bsp
nep101.bsp
sat4401.bsp
de440.bsp
earth_720101_070426.bpc
jup365.bsp
urall6.bsp
IAU_SATURN_for_RINGFIT.tpc
pck00010.tpc
earth_200101_990628_predict.bpc
uranus_ringframes_rfrench20220627_v1.tf
neptune_ringframes_rfrench20220702a_v1.tf
earth_flat_IAU.spk
    
```



Jupiter 2043-10-09T23:54:09 K9.81 G13.20



x: target alt < 5.0 deg or sun > -5.0 deg

Target	I/E	UTC	alt	alt-sun	radius	lat-geo	lat-geodetic
Jupiter	I	2043-10-09T23:48:18.371	55.89	-13.64	71485.8	79.00	80.28
Jupiter	E	2043-10-10T00:05:39.835	52.09	-17.26	71485.7	81.55	82.54