

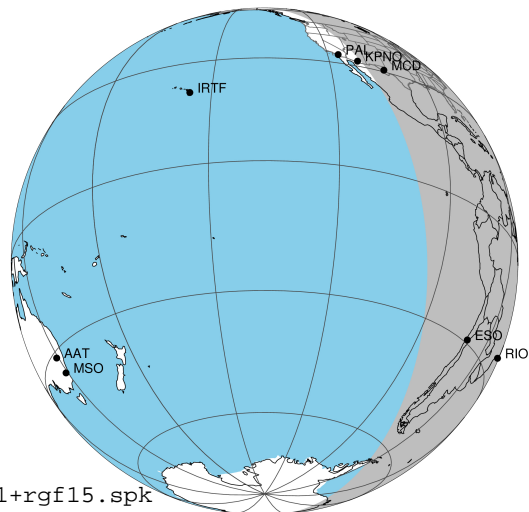
target : Jupiter  
 target radius (km) : 71492.00  
 C/A epoch : 2043-11-04T00:22:41.370  
 Event type : Pt  
 : Jupiter occs: topocentric, not geocentric  
 : Not a ringed target  
 Gaia source ID : 4069186156653196160  
 2Mass ID (if available) : 18035823-2324497

Jupiter 2043-11-04T00:22:41 K9.45 G13.35 Pt

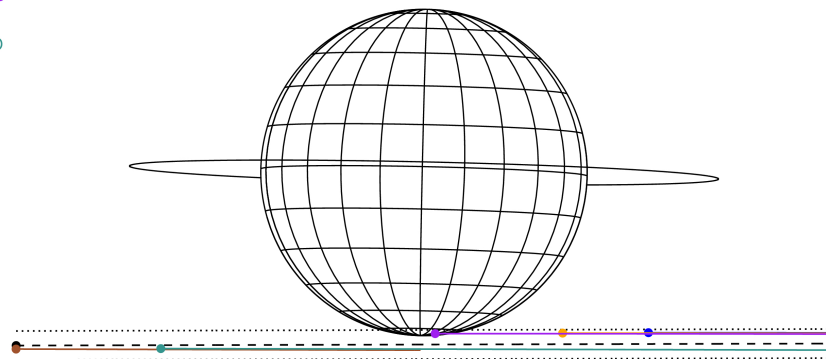
ICRS Star Coord at Epoch: 18h 03m 58.23223s -23:24:49.82784s

RUWE (>1.4 is poor) : 0.97  
 K magnitude : 9.446  
 G magnitude : 13.353  
 RP magnitude : 12.309  
 BP magnitude : 14.472  
 DUPflag : 0  
 Distance (au) : 5.799  
 f0 (km) : 0.00  
 g0 (km) : 0.00  
 skyplane vel. (km/s) : 32.40  
 Sun-Target sep (deg) : 50.05  
 Sun-Moon sep (deg) : 26.61  
 B (ring opening deg) : -2.06  
 PA of pole (deg) : -1.26  
 Pole direction: RA (deg): 268.05676  
 Dec (deg): 64.49731  
 C/A sky separation (") : 17.918  
 C/A sky separation (km) : 75366.9  
 NAIF SPICE kernels : RAJobs\_U111+rgf15.spk

Jupiter 2043-11-04T00:22:41 K9.45 G13.35 Pt



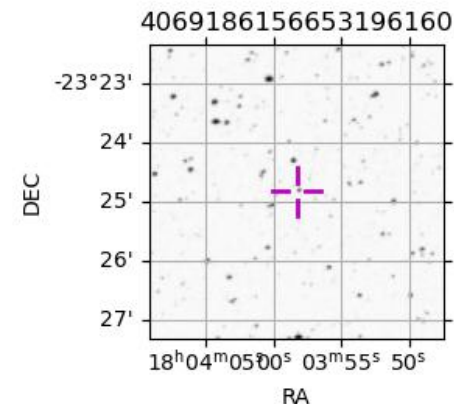
Earth  
 PAL  
 KPNO  
 MCD  
 RIO  
 ESO



2043-11-04T00:22:41.3700 α: 18 03 58.2322 δ: -23 24 49.828 C/A \*\*\*\*\* PA 0.14 deg v\_sky +32.40 km/s D 05.80 AU  
 Credit: Styled after SORA/Lucky Star

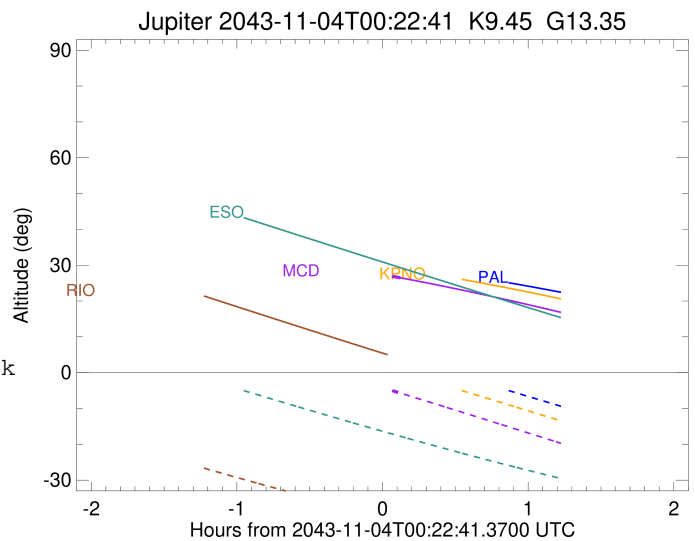
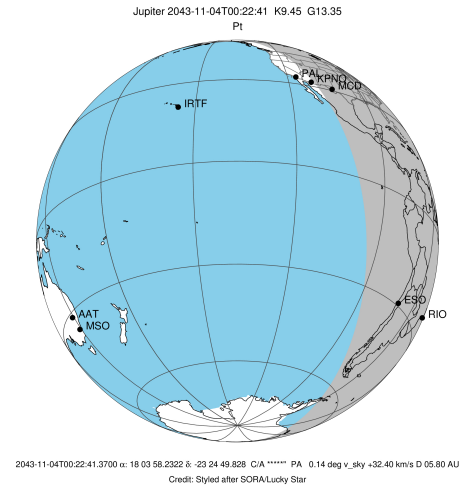
Observable events with sun below -5 deg and altitude above 5 deg

Obs	Location	lat	Elon	Target	Observed Events Interval	OCode
PIC	Pic du Midi	42.9	0.1			Pnn
PAL	Palomar Mt (200")	33.4	243.1			Pnn
PMO	Purple Mtn Obs. Nanking	32.1	118.8			Pnn
KPNO	Kitt Peak Natl Obs	32.0	248.4			Pnn
MCD	McDonald Obs. 2.7m	30.7	256.0	+	NOV 04 00:30 - NOV 04 00:30	Pne
TEN	Teide Obs./Tenerife	28.3	343.5			Pnn
IRTF	Mauna Kea/IRTF	19.8	204.5			Pnn
KAV	Kavalur Observatory	12.6	78.8			Pnn
RIO	Rio de Janeiro	-22.9	316.8			Pnn
ESO	European Southern Obs. (3.6m)	-29.3	289.3			Pnn
AAT	Siding Spring (AAT)	-31.3	149.1			Pnn
SAAO	So. Afr. Astro. Obs. (Sutherland)	-32.4	20.8			Pnn
MSO	Mt. Stromlo Observatory	-35.3	149.0			Pnn



```

target                : Jupiter
target radius (km)   : 71492.00
C/A epoch            : 2043-11-04T00:24:09.320
Event type          : Pt
                    : Jupiter occs: topocentric, not geocentric
                    : Not a ringed target
Observer code       : MCD
Location            : McDonald Obs. 2.7m
Latitude (deg)      : 30.67158
E. Longitude (deg)  : 255.97844
Altitude (km)       : 2.075
Gaia source ID      : 4069186156653196160
2Mass ID (if available) : 18035823-2324497
ICRS Star Coord at Epoch: 18h 03m 58.23223s -23:24:49.82784s
RUWE (>1.4 is poor) : 0.97
K magnitude         : 9.446
G magnitude         : 13.353
RP magnitude        : 12.309
BP magnitude        : 14.472
DUPflag            : 0
Distance (au)       : 5.799
f0 (km)             : 0.00
g0 (km)             : 0.00
skyplane vel. (km/s) : 32.40
Sun-Target sep (deg) : 50.05
Sun-Moon sep (deg)  : 27.30
B (ring opening deg) : -2.06
PA of pole (deg)    : -1.26
Pole direction: RA (deg): 268.05676
Dec (deg): 64.49731
C/A sky separation (") : 16.781
C/A sky separation (km) : 70585.5
NAIF SPICE kernels  : RAJobs_U111+rgf15.spk
URKALLv1.spk
naif0012.tls
nep097.bsp
nep101.bsp
sat4401.bsp
de440.bsp
earth_720101_070426.bpc
jup365.bsp
urall6.bsp
IAU_SATURN_for_RINGFIT.tpc
pck00010.tpc
earth_200101_990628_predict.bpc
uranus_ringframes_rfrench20220627_v1.tf
neptune_ringframes_rfrench20220702a_v1.tf
earth_flat_IAU.spk
    
```



x: target alt < 5.0 deg or sun > -5.0 deg

Target	I/E	UTC	alt	alt-sun	radius	lat-geo	lat-geodetic
Jupiter	I	2043-11-04T00:18:16.657	27.93	-3.25x	71486.3	-81.88	-82.83
Jupiter	E	2043-11-04T00:30:01.925	26.49	-5.70	71486.4	-79.45	-80.68