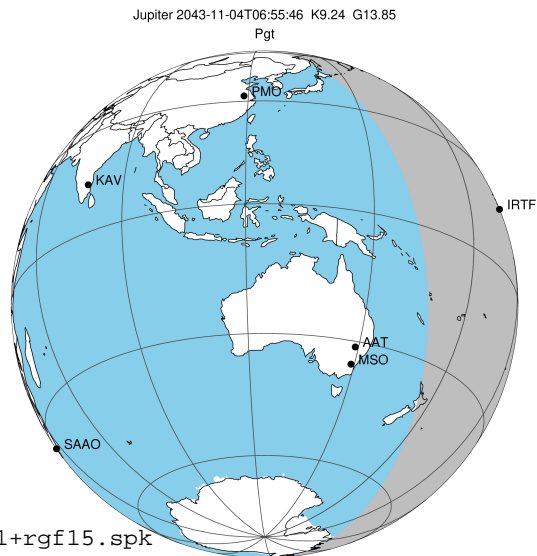


target : Jupiter
 target radius (km) : 71492.00
 C/A epoch : 2043-11-04T06:55:46.310
 Event type : Pgt
 : Jupiter occs: geocentric, topocentric
 : Not a ringed target
 Gaia source ID : 4069185301970598016
 2Mass ID (if available) : 18041145-2324246

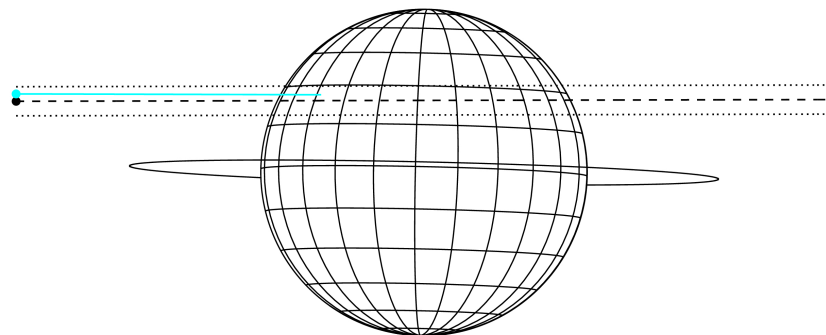
Jupiter 2043-11-04T06:55:46 K9.24 G13.85 Pgt

ICRS Star Coord at Epoch: 18h 04m 11.45031s -23:24:24.82310s
 RUWE (>1.4 is poor) : 0.89
 K magnitude : 9.240
 G magnitude : 13.846
 RP magnitude : 12.679
 BP magnitude : 15.299
 DUPflag : 0
 Distance (au) : 5.803
 f0 (km) : 0.00
 g0 (km) : 0.00
 skyplane vel. (km/s) : 32.49
 Sun-Target sep (deg) : 49.83
 Sun-Moon sep (deg) : 23.51
 B (ring opening deg) : -2.06
 PA of pole (deg) : -1.29
 Pole direction: RA (deg): 268.05676
 Dec (deg): 64.49731
 C/A sky separation (") : 7.503
 C/A sky separation (km) : 31575.7
 NAIF SPICE kernels : RAJobs_U111+rgf15.spk



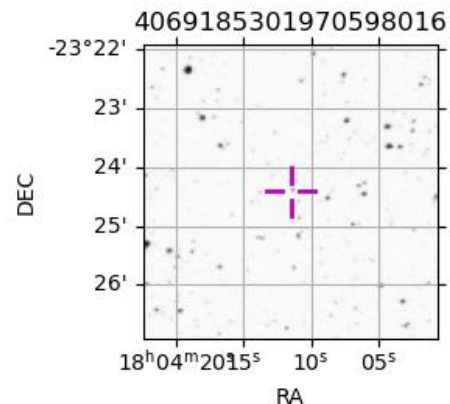
2043-11-04T06:55:46.3100 ex: 18 04 11.4503 s: -23 24 24.823 C/A 7.495° PA 180.12 deg v_sky +32.49 km/s D 05.80 AU
 Credit: Styled after SORA/Lucky Star

Earth
 IRTF



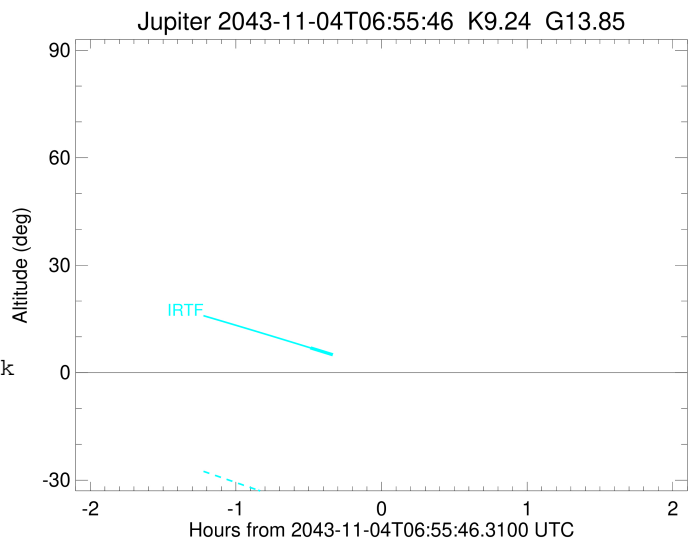
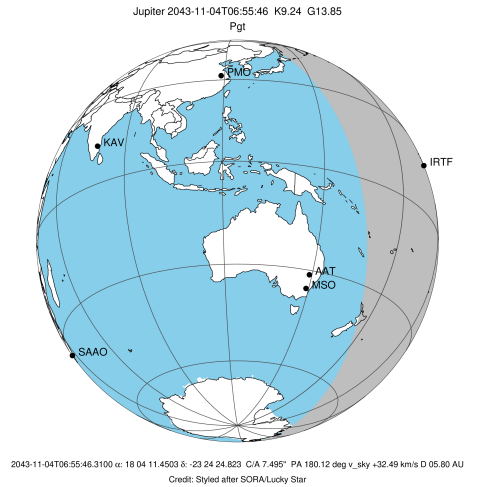
Observable events with sun below -5 deg and altitude above 5 deg

Obs	Location	lat	Elon	Target	Observed Events Interval	OCode
PIC	Pic du Midi	42.9	0.1			Pnn
PAL	Palomar Mt (200")	33.4	243.1			Pnn
PMO	Purple Mtn Obs. Nanking	32.1	118.8			Pnn
KPNO	Kitt Peak Natl Obs	32.0	248.4			Pnn
MCD	McDonald Obs. 2.7m	30.7	256.0			Pnn
TEN	Teide Obs./Tenerife	28.3	343.5			Pnn
IRTF	Mauna Kea/IRTF	19.8	204.5			Pin
KAV	Kavalur Observatory	12.6	78.8	+	NOV 04 06:26 - NOV 04 06:26	Pnn
RIO	Rio de Janeiro	-22.9	316.8			Pnn
ESO	European Southern Obs. (3.6m)	-29.3	289.3			Pnn
AAT	Siding Spring (AAT)	-31.3	149.1			Pnn
SAAO	So. Afr. Astro. Obs. (Sutherland)	-32.4	20.8			Pnn
MSO	Mt. Stromlo Observatory	-35.3	149.0			Pnn



```

target                : Jupiter
target radius (km)   : 71492.00
C/A epoch            : 2043-11-04T06:58:54.590
Event type          : Pgt
                    : Jupiter occs: geocentric, topocentric
                    : Not a ringed target
Observer code       : IRTF
Location            : Mauna Kea/IRTF
Latitude (deg)      : 19.82622
E. Longitude (deg)  : 204.52800
Altitude (km)       : 4.168
Gaia source ID      : 4069185301970598016
2Mass ID (if available) : 18041145-2324246
ICRS Star Coord at Epoch: 18h 04m 11.45031s -23:24:24.82310s
RUWE (>1.4 is poor) : 0.89
K magnitude          : 9.240
G magnitude          : 13.846
RP magnitude         : 12.679
BP magnitude         : 15.299
DUPflag             : 0
Distance (au)        : 5.803
f0 (km)              : 0.00
g0 (km)              : 0.00
skyplane vel. (km/s) : 32.49
Sun-Target sep (deg) : 49.83
Sun-Moon sep (deg)   : 24.33
B (ring opening deg) : -2.06
PA of pole (deg)     : -1.29
Pole direction: RA (deg): 268.05676
Dec (deg): 64.49731
C/A sky separation (") : 8.057
C/A sky separation (km) : 33908.8
NAIF SPICE kernels  : RAJobs_U111+rgf15.spk
URKALLv1.spk
naif0012.tls
nep097.bsp
nep101.bsp
sat4401.bsp
de440.bsp
earth_720101_070426.bpc
jup365.bsp
urall6.bsp
IAU_SATURN_for_RINGFIT.tpc
pck00010.tpc
earth_200101_990628_predict.bpc
uranus_ringframes_rfrench20220627_v1.tf
neptune_ringframes_rfrench20220702a_v1.tf
earth_flat_IAU.spk
    
```



x: target alt < 5.0 deg or sun > -5.0 deg

Target	I/E	UTC	alt	alt-sun	radius	lat-geo	lat-geodetic
Jupiter	I	2043-11-04T06:26:31.496	6.92	-37.87	71490.8	27.19	30.38
Jupiter	E	2043-11-04T07:31:13.440	-6.90x	-53.08	71490.6	29.40	32.73