

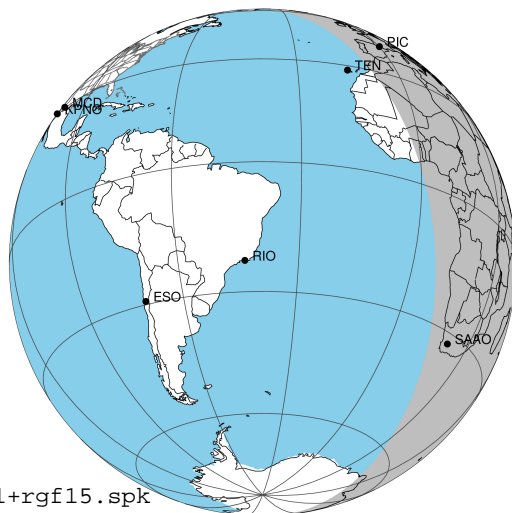
target : Jupiter
 target radius (km) : 71492.00
 C/A epoch : 2043-11-07T17:37:47.190
 Event type : Pgt
 : Jupiter occs: geocentric, topocentric
 : Not a ringed target
 Gaia source ID : 4066546474095635712
 2Mass ID (if available) : 18070073-2324230

Jupiter 2043-11-07T17:37:47 K6.80 G14.71 Pgt

ICRS Star Coord at Epoch: 18h 07m 00.74087s -23:24:23.00022s

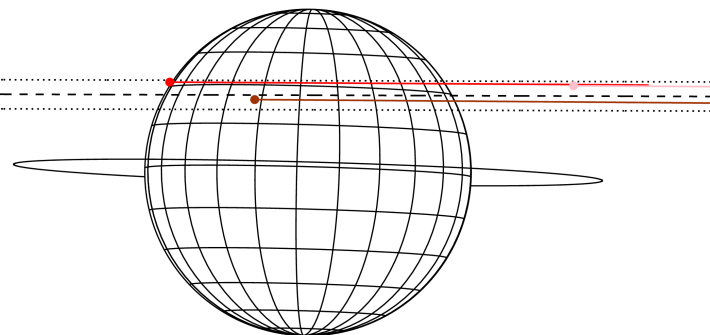
RUWE (>1.4 is poor) : 1.72
 K magnitude : 6.796
 G magnitude : 14.710
 RP magnitude : 13.051
 BP magnitude : 19.709
 DUPflag : 0
 Distance (au) : 5.842
 f0 (km) : 0.00
 g0 (km) : 0.00
 skyplane vel. (km/s) : 33.61
 Sun-Target sep (deg) : 47.02
 Sun-Moon sep (deg) : 17.95
 B (ring opening deg) : -2.05
 PA of pole (deg) : -1.59
 Pole direction: RA (deg): 268.05676
 Dec (deg): 64.49731
 C/A sky separation (") : 7.991
 C/A sky separation (km) : 33856.2
 NAIF SPICE kernels : RAJobs_U111+rgf15.spk

Jupiter 2043-11-07T17:37:47 K6.80 G14.71
 Pgt



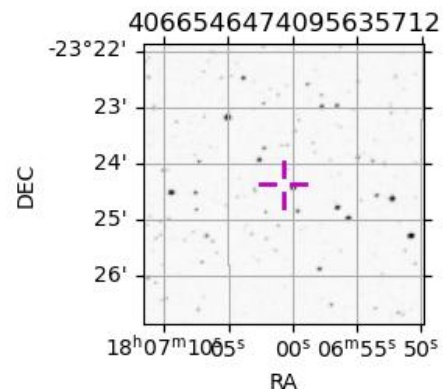
2043-11-07T17:37:47.1900 ex: 18 07 00.7409 s: -23 24 23.0000 C/A 7.983° PA 179.82 deg v_sky +33.61 km/s D 05.84 AU
 Credit: Styled after SORA/Lucky Star

Earth
 PIC
 TEN
 SAAO



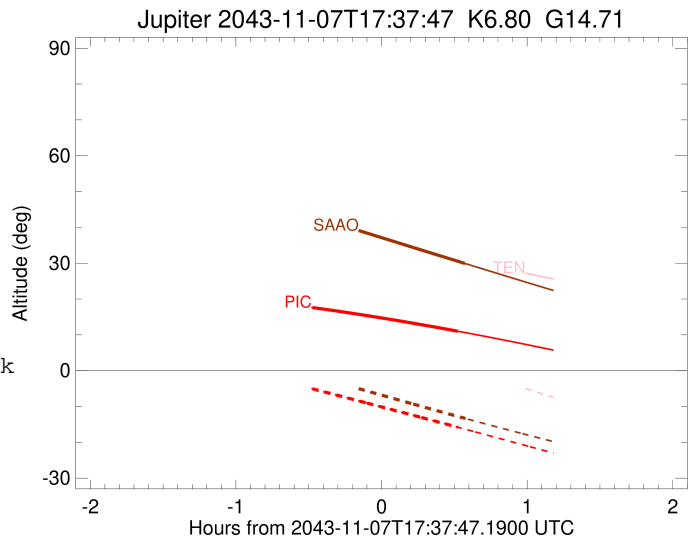
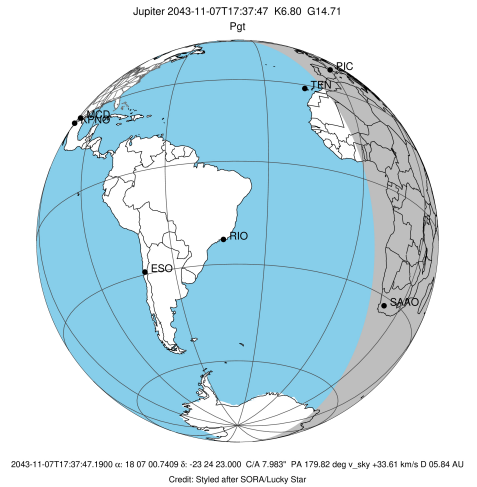
Observable events with sun below -5 deg and altitude above 5 deg

Obs	Location	lat	Elon	Target	Observed Events Interval	OCode
PIC	Pic du Midi	42.9	0.1	+ +	NOV 07 17:09 - NOV 07 18:09	Pie
PAL	Palomar Mt (200")	33.4	243.1			Pnn
PMO	Purple Mtn Obs. Nanking	32.1	118.8			Pnn
KPNO	Kitt Peak Natl Obs	32.0	248.4			Pnn
MCD	McDonald Obs. 2.7m	30.7	256.0			Pnn
TEN	Teide Obs./Tenerife	28.3	343.5			Pnn
IRTF	Mauna Kea/IRTF	19.8	204.5			Pnn
KAV	Kavalur Observatory	12.6	78.8			Pnn
RIO	Rio de Janeiro	-22.9	316.8			Pnn
ESO	European Southern Obs. (3.6m)	-29.3	289.3			Pnn
AAT	Siding Spring (AAT)	-31.3	149.1			Pnn
SAAO	So. Afr. Astro. Obs. (Sutherland)	-32.4	20.8	+	NOV 07 18:12 - NOV 07 18:12	Pne
MSO	Mt. Stromlo Observatory	-35.3	149.0			Pnn



```

target                : Jupiter
target radius (km)   : 71492.00
C/A epoch             : 2043-11-07T17:39:19.890
Event type            : Pgt
: Jupiter occs: geocentric, topocentric
: Not a ringed target
Observer code         : PIC
Location              : Pic du Midi
Latitude (deg)        : 42.93656
E. Longitude (deg)    : 0.14231
Altitude (km)         : 2.890
Gaia source ID        : 4066546474095635712
2Mass ID (if available) : 18070073-2324230
ICRS Star Coord at Epoch: 18h 07m 00.74087s -23:24:23.00022s
RUWE (>1.4 is poor)  : 1.72
K magnitude           : 6.796
G magnitude           : 14.710
RP magnitude          : 13.051
BP magnitude          : 19.709
DUPflag              : 0
Distance (au)         : 5.842
f0 (km)               : 0.00
g0 (km)               : 0.00
skyplane vel. (km/s) : 33.61
Sun-Target sep (deg)  : 47.02
Sun-Moon sep (deg)    : 17.84
B (ring opening deg)  : -2.05
PA of pole (deg)      : -1.59
Pole direction: RA (deg): 268.05676
Dec (deg): 64.49731
C/A sky separation (") : 9.261
C/A sky separation (km) : 39237.5
NAIF SPICE kernels    : RAJobs_U111+rgf15.spk
URKALLv1.spk
naif0012.tls
nep097.bsp
nep101.bsp
sat4401.bsp
de440.bsp
earth_720101_070426.bpc
jup365.bsp
urall6.bsp
IAU_SATURN_for_RINGFIT.tpc
pck00010.tpc
earth_200101_990628_predict.bpc
uranus_ringframes_rfrench20220627_v1.tf
neptune_ringframes_rfrench20220702a_v1.tf
earth_flat_IAU.spk
    
```

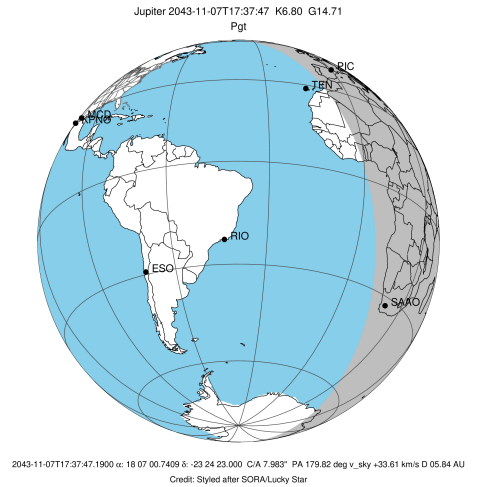


x: target alt < 5.0 deg or sun > -5.0 deg

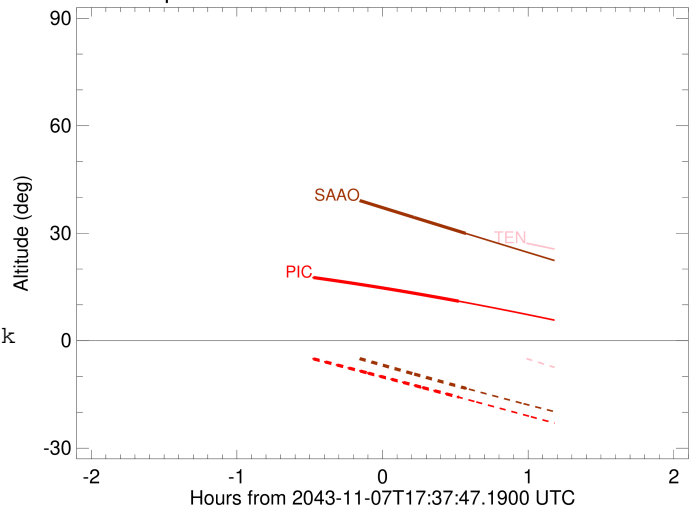
Target	I/E	UTC	alt	alt-sun	radius	lat-geo	lat-geodetic
Jupiter	I	2043-11-07T17:09:26.490	17.61	-5.09	71490.4	32.00	35.47
Jupiter	E	2043-11-07T18:09:11.322	11.02	-15.78	71490.2	34.51	38.09

```

target                : Jupiter
target radius (km)    : 71492.00
C/A epoch             : 2043-11-07T17:40:09.940
Event type            : Pgt
: Jupiter occs: geocentric, topocentric
: Not a ringed target
Observer code         : SAAO
Location              : So. Afr. Astro. Obs. (Sutherland)
Latitude (deg)        : -32.37953
E. Longitude (deg)    : 20.81070
Altitude (km)         : 1.768
Gaia source ID        : 4066546474095635712
2Mass ID (if available) : 18070073-2324230
ICRS Star Coord at Epoch: 18h 07m 00.74087s -23:24:23.00022s
RUWE (>1.4 is poor)  : 1.72
K magnitude           : 6.796
G magnitude           : 14.710
RP magnitude          : 13.051
BP magnitude          : 19.709
DUPflag              : 0
Distance (au)         : 5.842
f0 (km)               : 0.00
g0 (km)               : 0.00
skyplane vel. (km/s)  : 33.61
Sun-Target sep (deg)  : 47.02
Sun-Moon sep (deg)    : 17.43
B (ring opening deg)  : -2.05
PA of pole (deg)      : -1.59
Pole direction: RA (deg): 268.05676
Dec (deg): 64.49731
C/A sky separation (") : 7.497
C/A sky separation (km) : 31764.2
NAIF SPICE kernels    : RAJobs_U111+rgf15.spk
URKALLv1.spk
naif0012.tls
nep097.bsp
nep101.bsp
sat4401.bsp
de440.bsp
earth_720101_070426.bpc
jup365.bsp
urall6.bsp
IAU_SATURN_for_RINGFIT.tpc
pck00010.tpc
earth_200101_990628_predict.bpc
uranus_ringframes_rfrench20220627_v1.tf
neptune_ringframes_rfrench20220702a_v1.tf
earth_flat_IAU.spk
    
```



Jupiter 2043-11-07T17:37:47 K6.80 G14.71



x: target alt < 5.0 deg or sun > -5.0 deg

Target	I/E	UTC	alt	alt-sun	radius	lat-geo	lat-geodetic
Jupiter	I	2043-11-07T17:08:11.422	43.39	-1.03x	71491.0	25.18	28.22
Jupiter	E	2043-11-07T18:12:05.201	29.94	-13.29	71490.8	27.52	30.74