

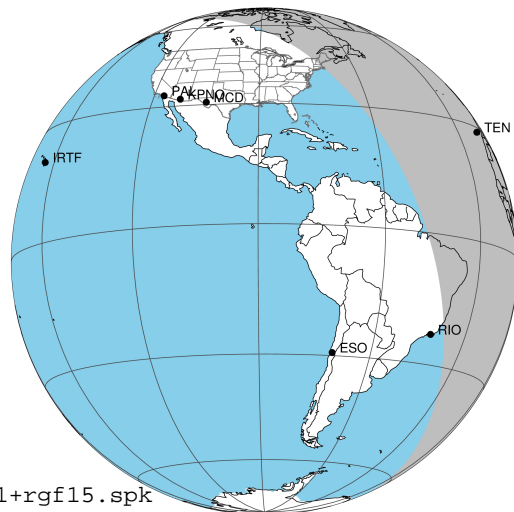
target : Jupiter  
 target radius (km) : 71492.00  
 C/A epoch : 2046-01-10T21:22:04.380  
 Event type : Pgt  
 : Jupiter occs: geocentric, topocentric  
 : Not a ringed target  
 Gaia source ID : 2608637172790182016  
 2Mass ID (if available) : 22475784-0848153

Jupiter 2046-01-10T21:22:04 K8.85 G10.19 Pgt

ICRS Star Coord at Epoch: 22h 47m 57.89284s -08:48:14.50753s

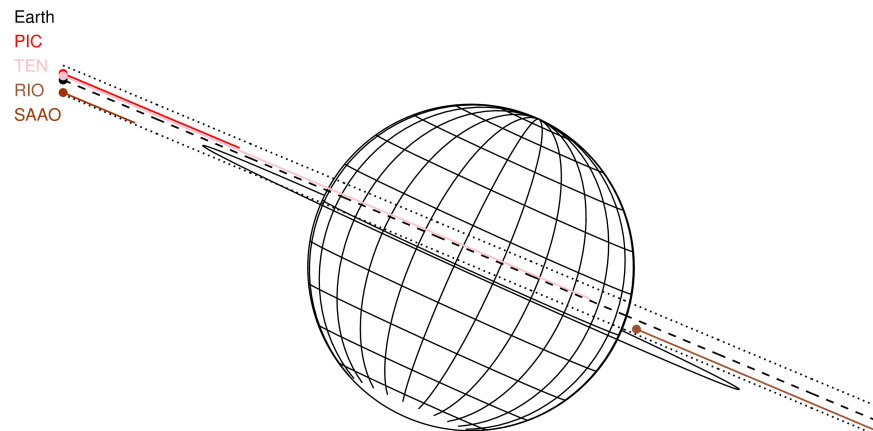
RUWE (>1.4 is poor) : 1.25  
 K magnitude : 8.849  
 G magnitude : 10.191  
 RP magnitude : 9.718  
 BP magnitude : 10.491  
 DUPflag : 0  
 Distance (au) : 5.554  
 f0 (km) : 0.00  
 g0 (km) : 0.00  
 skyplane vel. (km/s) : 32.91  
 Sun-Target sep (deg) : 49.90  
 Sun-Moon sep (deg) : 9.46  
 B (ring opening deg) : 1.17  
 PA of pole (deg) : -24.45  
 Pole direction: RA (deg): 268.05707  
 Dec (deg): 64.49723  
 C/A sky separation (") : 1.679  
 C/A sky separation (km) : 6762.9  
 NAIF SPICE kernels : RAJobs\_U111+rgf15.spk

Jupiter 2046-01-10T21:22:04 K8.85 G10.19  
 Pgt



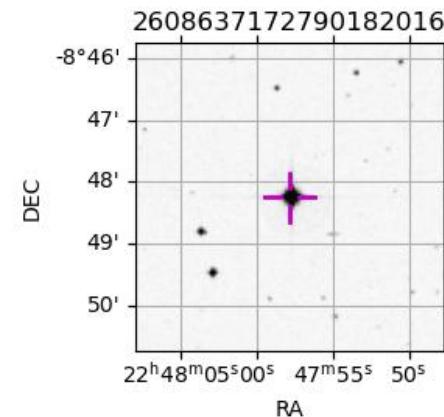
2046-01-10T21:22:04.3800 cc: 22 47 57.8928 s: -08 48 14.508 C/A 1.682° PA 157.28 deg v\_sky +32.91 km/s D 05.55 AU

Credit: Styled after SORA/Lucky Star



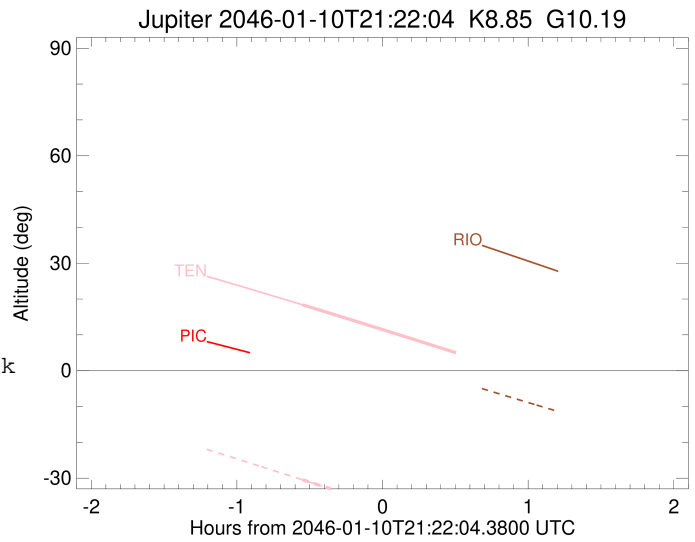
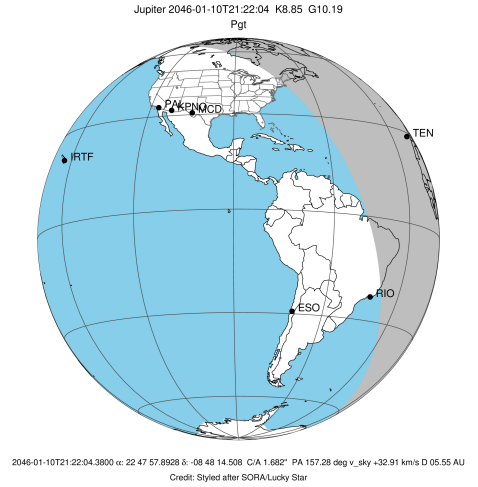
Observable events with sun below -5 deg and altitude above 5 deg

Obs	Location	lat	Elon	Target	Observed Events Interval	OCode
PIC	Pic du Midi	42.9	0.1			Pnn
PAL	Palomar Mt (200")	33.4	243.1			Pnn
PMO	Purple Mtn Obs. Nanking	32.1	118.8			Pnn
KPNO	Kitt Peak Natl Obs	32.0	248.4			Pnn
MCD	McDonald Obs. 2.7m	30.7	256.0			Pnn
TEN	Teide Obs./Tenerife	28.3	343.5	+	JAN 10 20:49 - JAN 10 20:49	Pin
IRTF	Mauna Kea/IRTF	19.8	204.5			Pnn
KAV	Kavalur Observatory	12.6	78.8			Pnn
RIO	Rio de Janeiro	-22.9	316.8			Pnn
ESO	European Southern Obs. (3.6m)	-29.3	289.3			Pnn
AAT	Siding Spring (AAT)	-31.3	149.1			Pnn
SAAO	So. Afr. Astro. Obs. (Sutherland)	-32.4	20.8			Pnn
MSO	Mt. Stromlo Observatory	-35.3	149.0			Pnn



```

target                : Jupiter
target radius (km)   : 71492.00
C/A epoch             : 2046-01-10T21:25:13.450
Event type            : Pgt
: Jupiter occs: geocentric, topocentric
: Not a ringed target
Observer code         : TEN
Location              : Teide Obs./Tenerife
Latitude (deg)        : 28.30050
E. Longitude (deg)    : 343.48909
Altitude (km)         : 2.395
Gaia source ID        : 2608637172790182016
2Mass ID (if available) : 22475784-0848153
ICRS Star Coord at Epoch: 22h 47m 57.89284s -08:48:14.50753s
RUWE (>1.4 is poor) : 1.25
K magnitude           : 8.849
G magnitude           : 10.191
RP magnitude          : 9.718
BP magnitude          : 10.491
DUPflag              : 0
Distance (au)         : 5.554
f0 (km)               : 0.00
g0 (km)               : 0.00
skyplane vel. (km/s) : 32.91
Sun-Target sep (deg) : 49.90
Sun-Moon sep (deg)   : 10.28
B (ring opening deg) : 1.17
PA of pole (deg)     : -24.45
Pole direction: RA (deg): 268.05707
Dec (deg): 64.49723
C/A sky separation (") : 1.899
C/A sky separation (km) : 7648.9
NAIF SPICE kernels   : RAJobs_U111+rgf15.spk
URKALLv1.spk
naif0012.tls
nep097.bsp
nep101.bsp
sat4401.bsp
de440.bsp
earth_720101_070426.bpc
jup365.bsp
urall6.bsp
IAU_SATURN_for_RINGFIT.tpc
pck00010.tpc
earth_200101_990628_predict.bpc
uranus_ringframes_rfrench20220627_v1.tf
neptune_ringframes_rfrench20220702a_v1.tf
earth_flat_IAU.spk
    
```



x: target alt < 5.0 deg or sun > -5.0 deg

Target	I/E	UTC	alt	alt-sun	radius	lat-geo	lat-geodetic
Jupiter	I	2046-01-10T20:49:05.838	18.38	-30.45	71492.0	4.62	5.28
Jupiter	E	2046-01-10T22:01:16.567	3.07x	-46.24	71492.0	7.70	8.79