

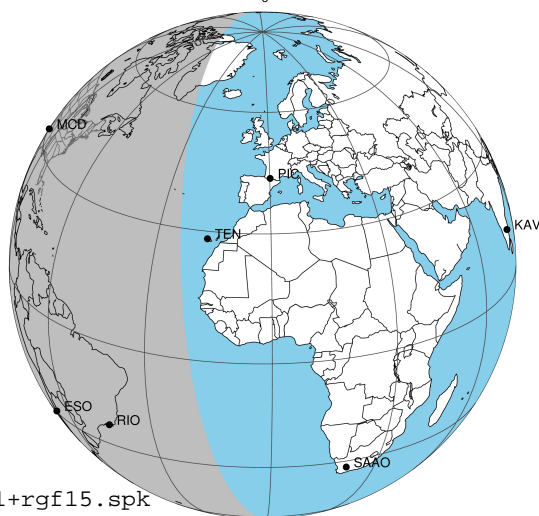
target : Jupiter  
 target radius (km) : 71492.00  
 C/A epoch : 2048-08-31T07:16:54.800  
 Event type : Pgt  
 : Jupiter occs: geocentric, topocentric  
 : Not a ringed target  
 Gaia source ID : 3427527873810816896  
 2Mass ID (if available) : 05455390+2253013

Jupiter 2048-08-31T07:16:54 K9.04 G13.46 Pgt

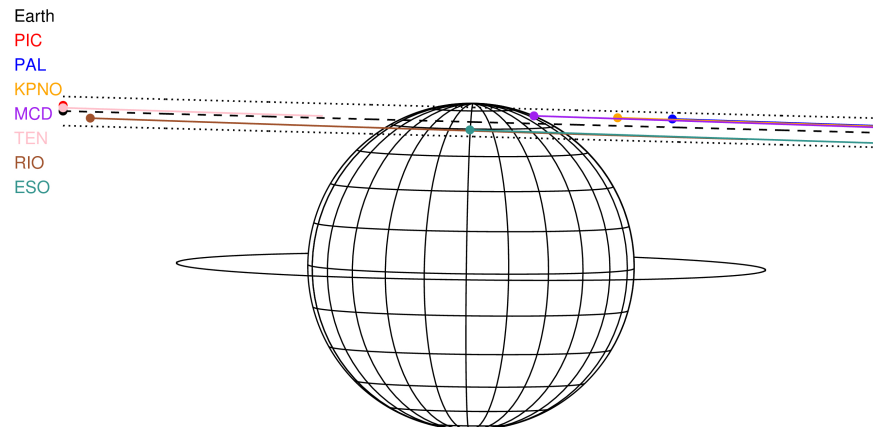
ICRS Star Coord at Epoch: 05h 45m 53.91774s +22:52:59.74054s

RUWE (>1.4 is poor) : 7.77  
 K magnitude : 9.045  
 G magnitude : 13.461  
 RP magnitude : 11.624  
 BP magnitude : 14.246  
 DUPflag : 0  
 Distance (au) : 5.306  
 f0 (km) : 0.00  
 g0 (km) : 0.00  
 skyplane vel. (km/s) : 22.21  
 Sun-Target sep (deg) : 71.14  
 Sun-Moon sep (deg) : 19.15  
 B (ring opening deg) : 2.61  
 PA of pole (deg) : -0.68  
 Pole direction: RA (deg): 268.05733  
 Dec (deg): 64.49722  
 C/A sky separation (") : 16.450  
 C/A sky separation (km) : 63303.9  
 NAIF SPICE kernels : RAJobs\_U111+rgf15.spk

Jupiter 2048-08-31T07:16:54 K9.04 G13.46  
 Pgt

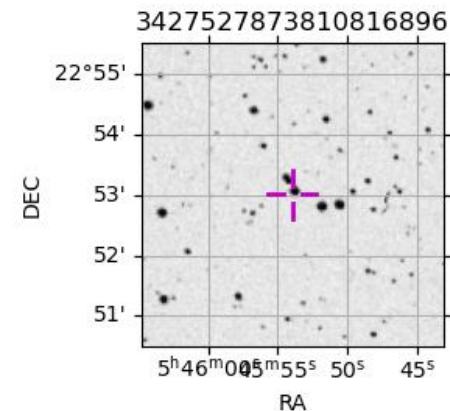


2048-08-31T07:16:54.8000 α: 05 45 53.91777 δ: +22 52 59.741 C/A \*\*\*\*\* PA 178.47 deg v\_sky +22.21 km/s D 05.31 AU  
 Credit: Styled after SORA/Lucky Star



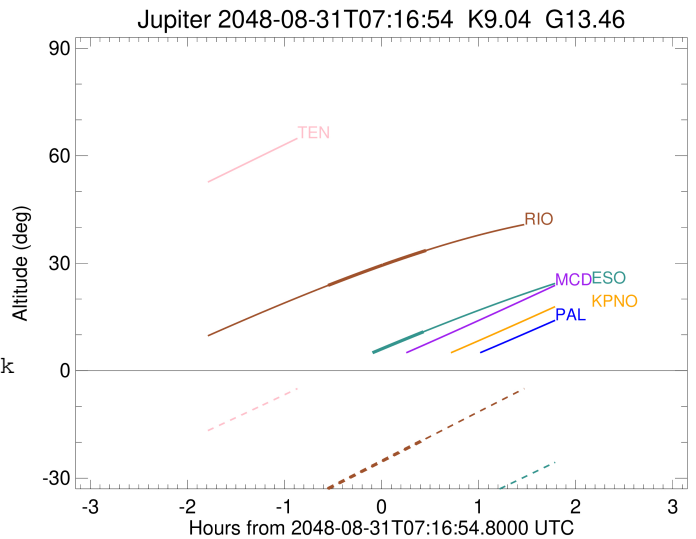
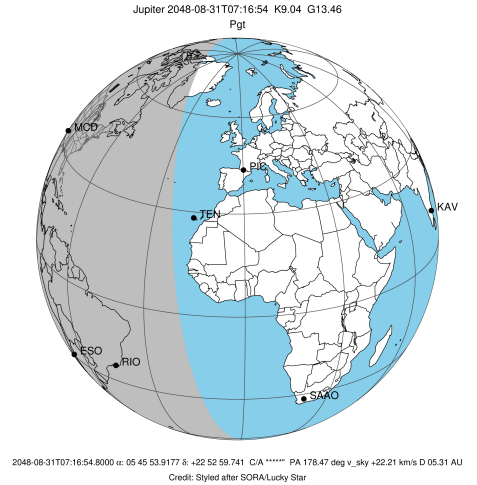
Observable events with sun below -5 deg and altitude above 5 deg

Obs	Location	lat	Elon	Target	Observed Events Interval	OCode
PIC	Pic du Midi	42.9	0.1			Pnn
PAL	Palomar Mt (200")	33.4	243.1			Pnn
PMO	Purple Mtn Obs. Nanking	32.1	118.8			Pnn
KPNO	Kitt Peak Natl Obs	32.0	248.4			Pnn
MCD	McDonald Obs. 2.7m	30.7	256.0			Pnn
TEN	Teide Obs./Tenerife	28.3	343.5			Pnn
IRTF	Mauna Kea/IRTF	19.8	204.5			Pnn
KAV	Kavalur Observatory	12.6	78.8			Pnn
RIO	Rio de Janeiro	-22.9	316.8	+ +	AUG 31 06:43 - AUG 31 07:44	Pie
ESO	European Southern Obs. (3.6m)	-29.3	289.3	+ +	AUG 31 07:42 - AUG 31 07:42	Pne
AAT	Siding Spring (AAT)	-31.3	149.1			Pnn
SAAO	So. Afr. Astro. Obs. (Sutherland)	-32.4	20.8			Pnn
MSO	Mt. Stromlo Observatory	-35.3	149.0			Pnn



```

target                : Jupiter
target radius (km)   : 71492.00
C/A epoch             : 2048-08-31T07:14:09.220
Event type            : Pgt
: Jupiter occs: geocentric, topocentric
: Not a ringed target
Observer code         : RIO
Location              : Rio de Janeiro
Latitude (deg)       : -22.89506
E. Longitude (deg)   : 316.77708
Altitude (km)        : 0.033
Gaia source ID       : 3427527873810816896
2Mass ID (if available) : 05455390+2253013
ICRS Star Coord at Epoch: 05h 45m 53.91774s +22:52:59.74054s
RUWE (>1.4 is poor) : 7.77
K magnitude           : 9.045
G magnitude           : 13.461
RP magnitude          : 11.624
BP magnitude          : 14.246
DUPflag              : 0
Distance (au)        : 5.306
f0 (km)               : 0.00
g0 (km)               : 0.00
skyplane vel. (km/s) : 22.21
Sun-Target sep (deg) : 71.14
Sun-Moon sep (deg)   : 18.83
B (ring opening deg) : 2.61
PA of pole (deg)     : -0.68
Pole direction: RA (deg): 268.05733
Dec (deg): 64.49722
C/A sky separation (") : 15.439
C/A sky separation (km) : 59410.7
NAIF SPICE kernels   : RAJobs_U111+rgf15.spk
URKALLv1.spk
naif0012.tls
nep097.bsp
nep101.bsp
sat4401.bsp
de440.bsp
earth_720101_070426.bpc
jup365.bsp
urall6.bsp
IAU_SATURN_for_RINGFIT.tpc
pck00010.tpc
earth_200101_990628_predict.bpc
uranus_ringframes_rfrench20220627_v1.tf
neptune_ringframes_rfrench20220702a_v1.tf
earth_flat_IAU.spk
    
```

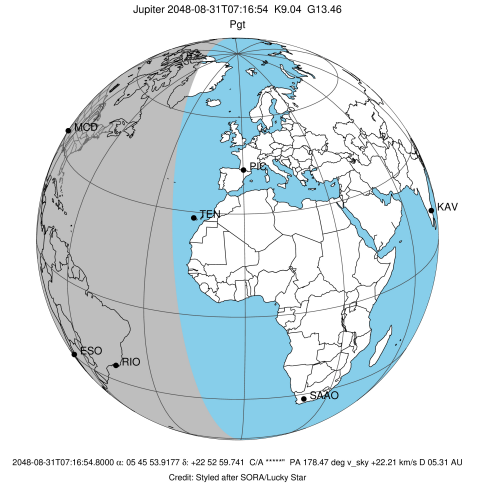


x: target alt < 5.0 deg or sun > -5.0 deg

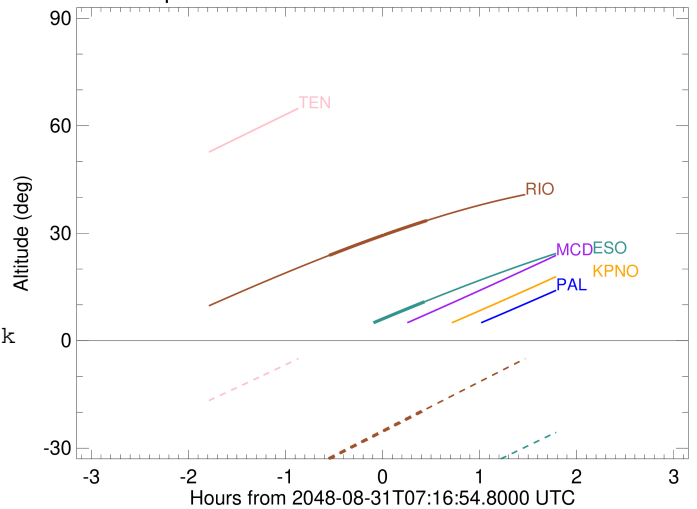
Target	I/E	UTC	alt	alt-sun	radius	lat-geo	lat-geodetic
Jupiter	I	2048-08-31T06:43:56.023	23.80	-32.90	71485.4	57.29	60.53
Jupiter	E	2048-08-31T07:44:26.335	33.55	-18.96	71485.7	54.99	58.36

```

target                : Jupiter
target radius (km)   : 71492.00
C/A epoch            : 2048-08-31T07:13:14.870
Event type           : Pgt
: Jupiter occs: geocentric, topocentric
: Not a ringed target
Observer code        : ESO
Location             : European Southern Obs. (3.6m)
Latitude (deg)       : -29.26097
E. Longitude (deg)   : 289.26831
Altitude (km)        : 2.400
Gaia source ID       : 3427527873810816896
2Mass ID (if available) : 05455390+2253013
ICRS Star Coord at Epoch: 05h 45m 53.91774s +22:52:59.74054s
RUWE (>1.4 is poor) : 7.77
K magnitude          : 9.045
G magnitude          : 13.461
RP magnitude         : 11.624
BP magnitude         : 14.246
DUPflag             : 0
Distance (au)        : 5.306
f0 (km)              : 0.00
g0 (km)              : 0.00
skyplane vel. (km/s) : 22.21
Sun-Target sep (deg) : 71.14
Sun-Moon sep (deg)   : 18.53
B (ring opening deg) : 2.61
PA of pole (deg)     : -0.68
Pole direction: RA (deg): 268.05733
Dec (deg): 64.49722
C/A sky separation (") : 15.540
C/A sky separation (km) : 59801.4
NAIF SPICE kernels   : RAJobs_U111+rgf15.spk
URKALLv1.spk
naif0012.tls
nep097.bsp
nep101.bsp
sat4401.bsp
de440.bsp
earth_720101_070426.bpc
jup365.bsp
urall6.bsp
IAU_SATURN_for_RINGFIT.tpc
pck00010.tpc
earth_200101_990628_predict.bpc
uranus_ringframes_rfrench20220627_v1.tf
neptune_ringframes_rfrench20220702a_v1.tf
earth_flat_IAU.spk
    
```



Jupiter 2048-08-31T07:16:54 K9.04 G13.46



x: target alt < 5.0 deg or sun > -5.0 deg

Target	I/E	UTC	alt	alt-sun	radius	lat-geo	lat-geodetic
Jupiter	I	2048-08-31T06:43:42.860	-0.35x	-54.89	71485.3	57.93	61.13
Jupiter	E	2048-08-31T07:42:51.560	10.85	-43.02	71485.7	55.46	58.81