

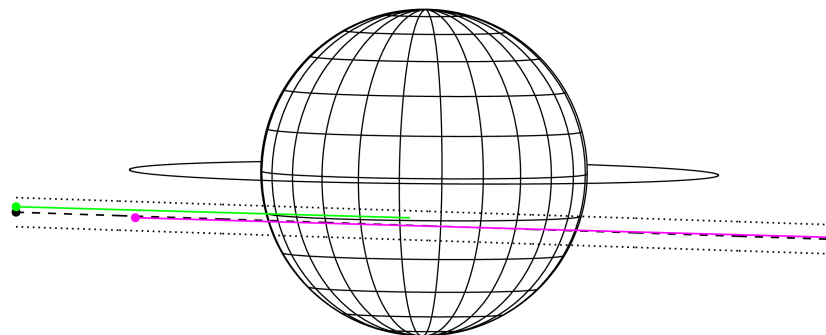
target : Jupiter
 target radius (km) : 71492.00
 C/A epoch : 2049-04-23T14:22:31.590
 Event type : Pgt
 : Jupiter occs: geocentric, topocentric
 : Not a ringed target
 Gaia source ID : 3427576527199381760
 2Mass ID (if available) : 05471268+2318454

Jupiter 2049-04-23T14:22:31 K9.64 G14.22 Pgt

ICRS Star Coord at Epoch: 05h 47m 12.69250s +23:18:45.41005s
 RUWE (>1.4 is poor) : 1.04
 K magnitude : 9.637
 G magnitude : 14.215
 RP magnitude : 13.052
 BP magnitude : 15.672
 DUPflag : 0
 Distance (au) : 5.679
 f0 (km) : 0.00
 g0 (km) : 0.00
 skyplane vel. (km/s) : 30.18
 Sun-Target sep (deg) : 53.88
 Sun-Moon sep (deg) : 160.63
 B (ring opening deg) : 2.18
 PA of pole (deg) : -0.54
 Pole direction: RA (deg): 268.05743
 Dec (deg): 64.49719
 C/A sky separation (") : 5.664
 C/A sky separation (km) : 23325.1
 NAIF SPICE kernels : RAJobs_U111+rgf15.spk



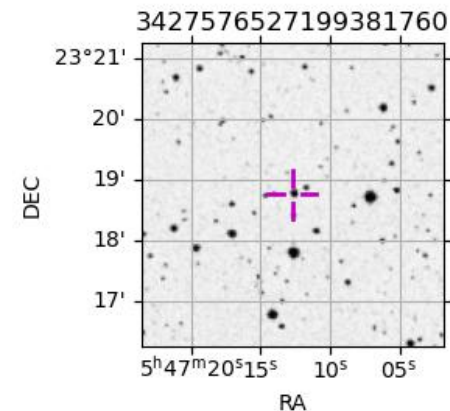
Earth
 PMO
 KAV



2049-04-23T14:22:31.5900 ex: 05 47 12.6925 s: +23 18 45.410 C/A 5.666" PA 358.10 deg v_sky +30.18 km/s D 05.68 AU
 Credit: Styled after SORA/Lucky Star

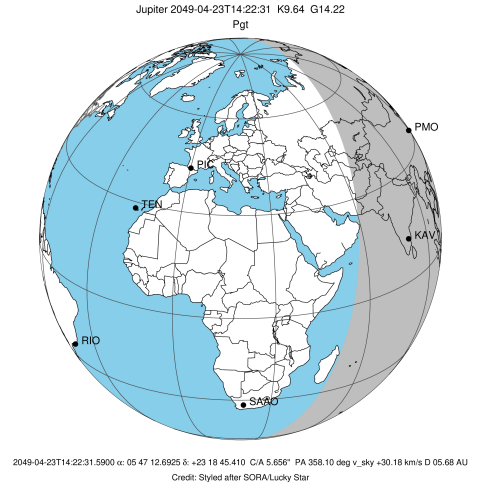
Observable events with sun below -5 deg and altitude above 5 deg

Obs	Location	lat	Elon	Target	Observed Events Interval	OEcode
PIC	Pic du Midi	42.9	0.1			Pnn
PAL	Palomar Mt (200")	33.4	243.1			Pnn
PMO	Purple Mtn Obs. Nanking	32.1	118.8	+	APR 23 13:47 - APR 23 13:47	Pin
KPNO	Kitt Peak Natl Obs	32.0	248.4			Pnn
MCD	McDonald Obs. 2.7m	30.7	256.0			Pnn
TEN	Teide Obs./Tenerife	28.3	343.5			Pnn
IRTF	Mauna Kea/IRTF	19.8	204.5			Pnn
KAV	Kavalur Observatory	12.6	78.8	+ +	APR 23 13:47 - APR 23 15:03	Pie
RIO	Rio de Janeiro	-22.9	316.8			Pnn
ESO	European Southern Obs. (3.6m)	-29.3	289.3			Pnn
AAT	Siding Spring (AAT)	-31.3	149.1			Pnn
SAAO	So. Afr. Astro. Obs. (Sutherland)	-32.4	20.8			Pnn
MSO	Mt. Stromlo Observatory	-35.3	149.0			Pnn

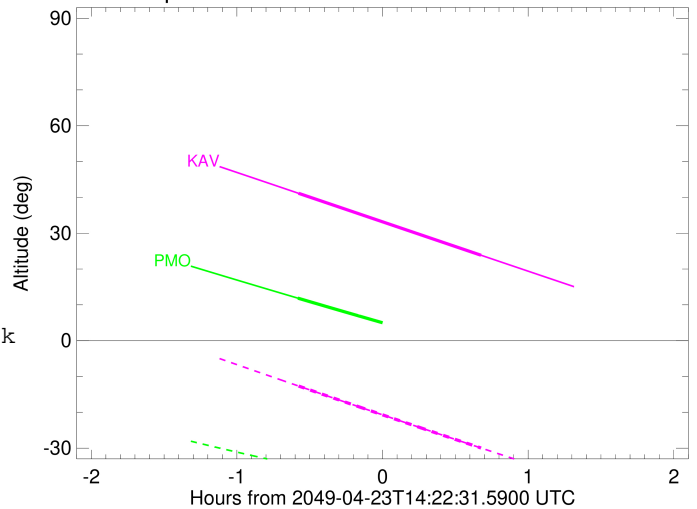


```

target                : Jupiter
target radius (km)   : 71492.00
C/A epoch             : 2049-04-23T14:25:34.800
Event type           : Pgt
: Jupiter occs: geocentric, topocentric
: Not a ringed target
Observer code        : PMO
Location             : Purple Mtn Obs. Nanking
Latitude (deg)       : 32.06667
E. Longitude (deg)   : 118.82089
Altitude (km)        : 0.364
Gaia source ID       : 3427576527199381760
2Mass ID (if available) : 05471268+2318454
ICRS Star Coord at Epoch: 05h 47m 12.69250s +23:18:45.41005s
RUWE (>1.4 is poor) : 1.04
K magnitude           : 9.637
G magnitude           : 14.215
RP magnitude          : 13.052
BP magnitude          : 15.672
DUPflag              : 0
Distance (au)        : 5.679
f0 (km)              : 0.00
g0 (km)              : 0.00
skyplane vel. (km/s) : 30.18
Sun-Target sep (deg) : 53.88
Sun-Moon sep (deg)   : 159.95
B (ring opening deg) : 2.18
PA of pole (deg)     : -0.54
Pole direction: RA (deg): 268.05743
Dec (deg): 64.49719
C/A sky separation ("): 4.861
C/A sky separation (km): 20020.8
NAIF SPICE kernels   : RAJobs_U111+rgf15.spk
URKALLv1.spk
naif0012.tls
nep097.bsp
nep101.bsp
sat4401.bsp
de440.bsp
earth_720101_070426.bpc
jup365.bsp
urall6.bsp
IAU_SATURN_for_RINGFIT.tpc
pck00010.tpc
earth_200101_990628_predict.bpc
uranus_ringframes_rfrench20220627_v1.tf
neptune_ringframes_rfrench20220702a_v1.tf
earth_flat_IAU.spk
    
```



Jupiter 2049-04-23T14:22:31 K9.64 G14.22

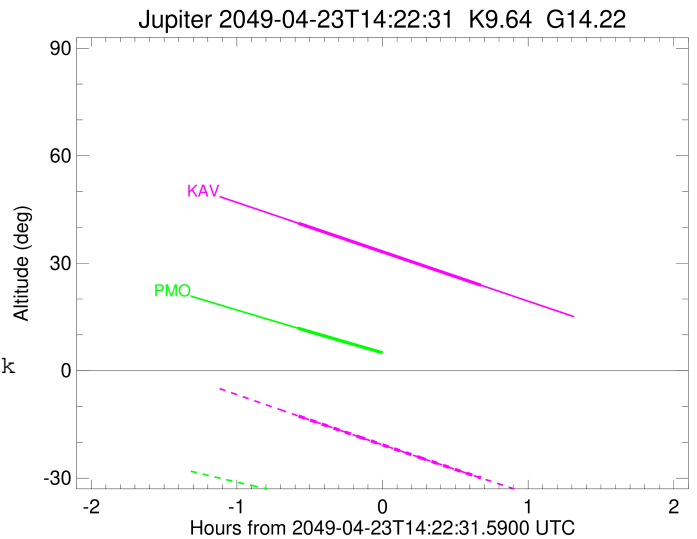
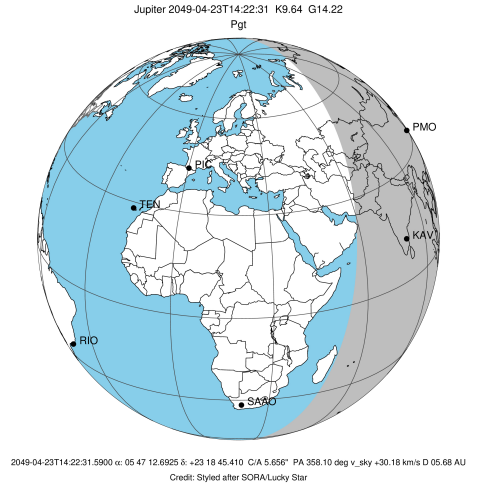


x: target alt < 5.0 deg or sun > -5.0 deg

Target	I/E	UTC	alt	alt-sun	radius	lat-geo	lat-geodetic
Jupiter	I	2049-04-23T13:47:42.853	11.85	-34.83	71491.6	-15.18	-17.23
Jupiter	E	2049-04-23T15:03:21.097	-2.73x	-43.08	71491.4	-17.32	-19.61

```

target                : Jupiter
target radius (km)   : 71492.00
C/A epoch            : 2049-04-23T14:25:33.660
Event type           : Pgt
: Jupiter occs: geocentric, topocentric
: Not a ringed target
Observer code        : KAV
Location             : Kavalur Observatory
Latitude (deg)       : 12.57556
E. Longitude (deg)  : 78.83167
Altitude (km)        : 0.722
Gaia source ID       : 3427576527199381760
2Mass ID (if available) : 05471268+2318454
ICRS Star Coord at Epoch: 05h 47m 12.69250s +23:18:45.41005s
RUWE (>1.4 is poor) : 1.04
K magnitude          : 9.637
G magnitude          : 14.215
RP magnitude         : 13.052
BP magnitude         : 15.672
DUPflag             : 0
Distance (au)        : 5.679
f0 (km)              : 0.00
g0 (km)              : 0.00
skyplane vel. (km/s) : 30.18
Sun-Target sep (deg) : 53.88
Sun-Moon sep (deg)  : 160.05
B (ring opening deg) : 2.18
PA of pole (deg)    : -0.54
Pole direction: RA (deg): 268.05743
Dec (deg): 64.49719
C/A sky separation (") : 5.694
C/A sky separation (km) : 23450.2
NAIF SPICE kernels  : RAJobs_U111+rgf15.spk
URKALLv1.spk
naif0012.tls
nep097.bsp
nep101.bsp
sat4401.bsp
de440.bsp
earth_720101_070426.bpc
jup365.bsp
urall6.bsp
IAU_SATURN_for_RINGFIT.tpc
pck00010.tpc
earth_200101_990628_predict.bpc
uranus_ringframes_rfrench20220627_v1.tf
neptune_ringframes_rfrench20220702a_v1.tf
earth_flat_IAU.spk
    
```



x: target alt < 5.0 deg or sun > -5.0 deg

Target	I/E	UTC	alt	alt-sun	radius	lat-geo	lat-geodetic
Jupiter	I	2049-04-23T13:47:55.735	41.13	-12.66	71491.4	-18.04	-20.41
Jupiter	E	2049-04-23T15:03:05.922	23.85	-29.95	71491.2	-20.20	-22.79