

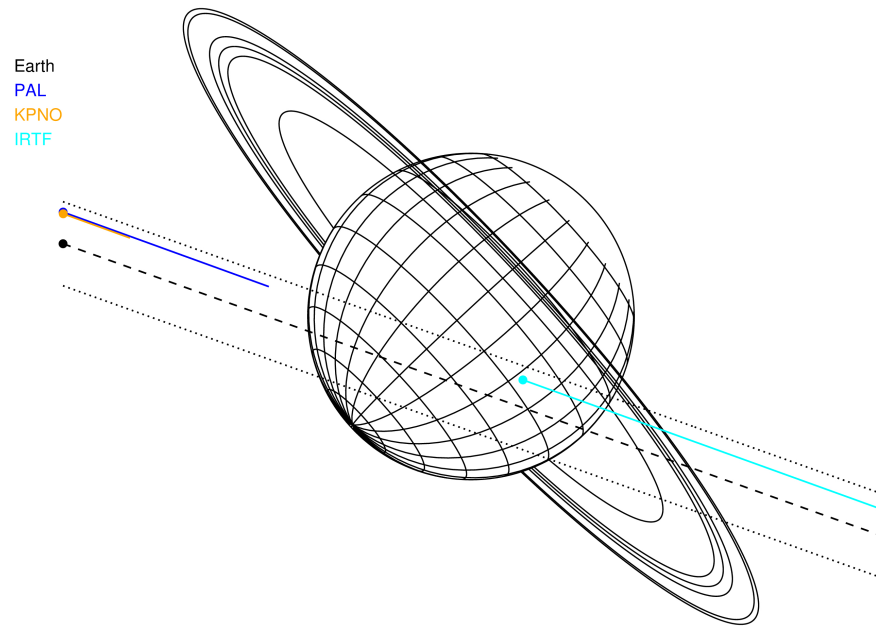
target : Neptune
 target radius (km) : 24764.00
 C/A epoch : 2035-06-11T12:40:24.160
 Event type : PgtRgt
 : Neptune occs: geocentric, topocentric
 : Ring occs: geocentric, topocentric
 Gaia source ID : 2566520143664948736
 2Mass ID (if available) : 01293662+0737263

Neptune 2035-06-11T12:40:24 K14.92 G18.64 PgtRgt

ICRS Star Coord at Epoch: 01h 29m 36.64382s +07:37:26.81653s
 RUWE (>1.4 is poor) : 0.98
 K magnitude : 14.920
 G magnitude : 18.635
 RP magnitude : 17.463
 BP magnitude : 20.106
 DUPflag : 0
 Distance (au) : 30.385
 f0 (km) : 0.000
 g0 (km) : 0.000
 skyplane vel. (km/s) : 21.88
 Sun-Target sep (deg) : 56.44
 Sun-Moon sep (deg) : 130.32
 B (ring opening deg) : -10.41
 PA of pole (deg) : -47.58
 # a(km) ring



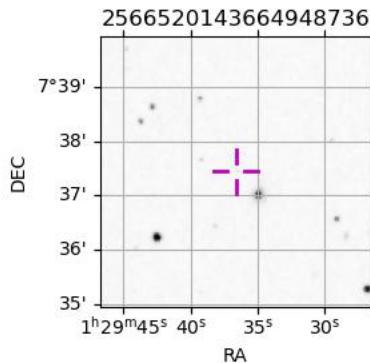
2035-06-11T12:40:24.1600 cc: 01 29 36.6438 s: +07 37 26.817 C/A 0.472° PA 340.37 deg v_sky +21.88 km/s D 30.39 AU
 Credit: Styled after SORA/Lucky Star



- 1 42000.0 Galle
- 2 53200.0 LeVerrier
- 3 55200.0 Lassell
- 4 57200.0 Arago
- 5 61953.0 Galatea
- 6 62933.0 Adams

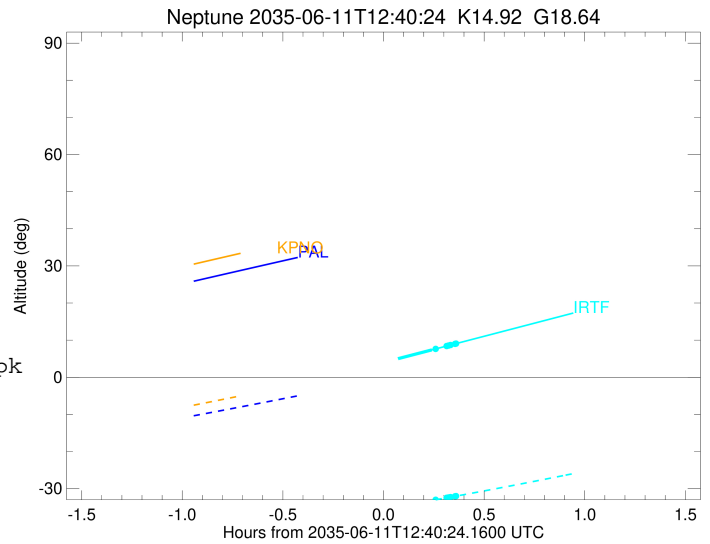
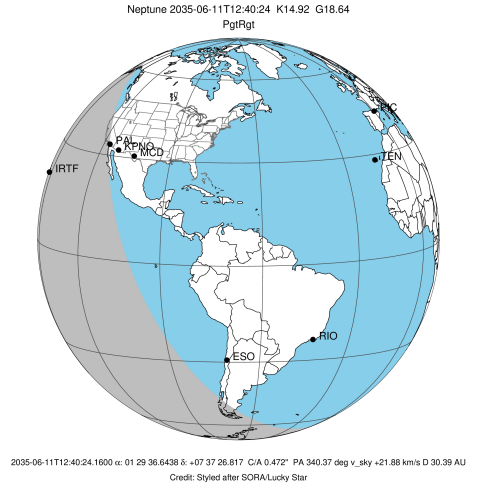
Observable events with sun below -5 deg and altitude above 5 deg unblocked by planet

Obs	Location	lat	Elon	Rings I	Planet	Rings E	Observed Events Interval	OEcode
PIC	Pic du Midi	42.9	0.1					PnnRnn
PAL	Palomar Mt (200")	33.4	243.1					PnnRnn
PMO	Purple Mtn Obs. Nanki	32.1	118.8					PnnRnn
KPNO	Kitt Peak Natl Obs	32.0	248.4					PnnRnn
MCD	McDonald Obs. 2.7m	30.7	256.0					PnnRnn
TEN	Teide Obs./Tenerife	28.3	343.5					PnnRnn
IRTF	Mauna Kea/IRTF	19.8	204.5				JUN 11 12:54 - JUN 11 13:01	PneRne
KAV	Kavalur Observatory	12.6	78.8					PnnRnn
RIO	Rio de Janeiro	-22.9	316.8					PnnRnn
ESO	European Southern Obs	-29.3	289.3					PnnRnn
AAT	Siding Spring (AAT)	-31.3	149.1					PnnRnn
SAAO	So. Afr. Astro. Obs.	-32.4	20.8					PnnRnn
MSO	Mt. Stromlo Observato	-35.3	149.0					PnnRnn



```

target                : Neptune
target radius (km)   : 24764.00
C/A epoch             : 2035-06-11T12:36:37.230
Event type           : PgtRgt
: Neptune occs: geocentric, topocentric
: Ring occs: geocentric, topocentric
Observer code        : IRTF
Location              : Mauna Kea/IRTF
Latitude (deg)       : 19.82622
E. Longitude (deg)   : 204.52800
Altitude (km)        : 4.168
Gaia source ID       : 2566520143664948736
2Mass ID (if available) : 01293662+0737263
ICRS Star Coord at Epoch: 01h 29m 36.64382s +07:37:26.81653s
RUWE (>1.4 is poor) : 0.98
K magnitude           : 14.920
G magnitude           : 18.635
RP magnitude          : 17.463
BP magnitude          : 20.106
DUPflag              : 0
Distance (au)        : 30.385
f0 (km)               : 0.000
g0 (km)               : 0.000
skyplane vel. (km/s) : 21.88
Sun-Target sep (deg) : 56.44
Sun-Moon sep (deg)   : 129.89
B (ring opening deg) : -10.41
PA of pole (deg)     : -47.58
Pole direction: RA (deg): 299.33374
Dec (deg): 42.95036
C/A sky separation (") : 0.290
C/A sky separation (km) : 6388.4
NAIF SPICE kernels   : RAJobs_U111+rgf16.spk
URKALLv1.spk
nep097.bsp
nep101.bsp
sat4401.bsp
de440.bsp
earth_720101_070426.bpc
earthstns_itr93_040916.bsp
earth_200101_990628_predict.bpc
pck00010.tpc
pck.urall11.tpc.Neptune
naif0012.tls
IAU_NEPTUNE_for_RINGFIT.tpc.BECAREFUL
earth_flat_IAU.spk
    
```



Ring	I/E	UTC	b?	alt	alt-sun	radius	r-dot	lat-geo	lat-geodetic
Adams	I	2035-06-11T12:27:33.584	b	0.99x	-37.32	62933.00	-57.60		
Galatea	I	2035-06-11T12:27:50.609	b	1.05x	-37.28	61953.00	-57.51		
Arago	I	2035-06-11T12:29:13.601	b	1.38x	-37.08	57200.00	-57.01		
Lassell	I	2035-06-11T12:29:48.757	b	1.51x	-37.00	55200.00	-56.77		
LeVerrier	I	2035-06-11T12:30:24.069	b	1.65x	-36.91	53200.00	-56.51		
Galle	I	2035-06-11T12:33:44.824	b	2.43x	-36.42	42000.00	-55.24		
Neptune	I	2035-06-11T12:18:26.026		-1.14x	-38.58	24757.68		-41.90	-42.87
Neptune	E	2035-06-11T12:54:50.607		7.38	-33.18	24763.32		12.62	13.04
Galle	E	2035-06-11T12:55:45.088		7.59	-33.03	42000.00	56.62		
LeVerrier	E	2035-06-11T12:59:00.785		8.36	-32.51	53200.00	57.71		
Lassell	E	2035-06-11T12:59:35.402		8.50	-32.41	55200.00	57.84		
Arago	E	2035-06-11T13:00:09.948		8.63	-32.32	57200.00	57.95		
Galatea	E	2035-06-11T13:01:31.807		8.95	-32.09	61953.00	58.17		
Adams	E	2035-06-11T13:01:48.649		9.02	-32.05	62933.00	58.21		